

# URBAN 3D

STA6300-G

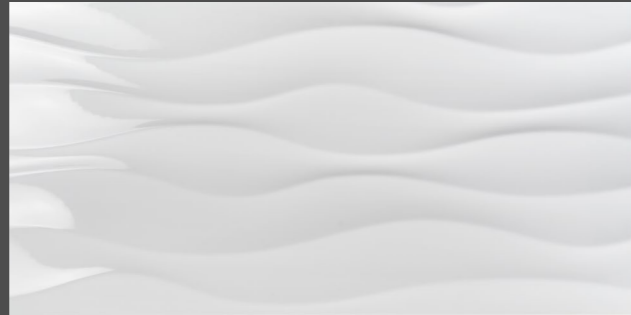


# URBAN 3D



**STA6300-A**

12"x24"/300x600mm



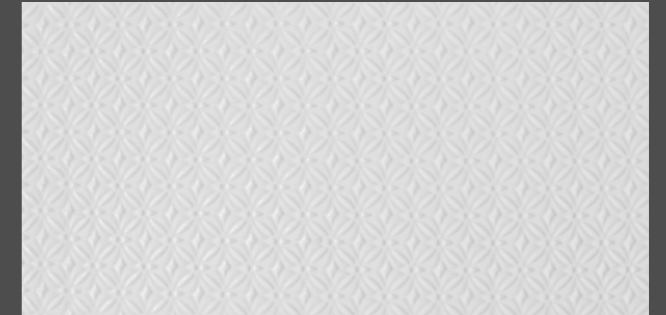
**STA6300-C**

12"x24"/300x600mm



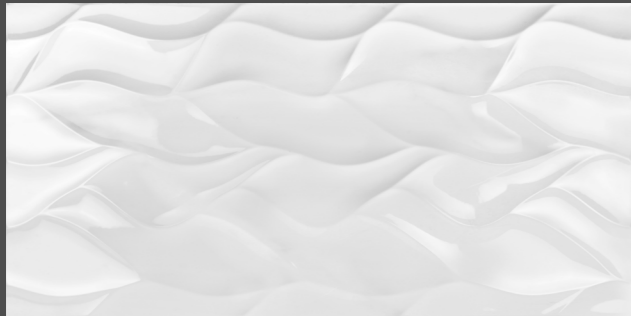
**STA6300-F**

12"x24"/300x600mm



**STA6300-G**

12"x24"/300x600mm



**STA6300H1**

12"x24"/300x600mm



**STA6300-M**

12"x24"/300x600mm



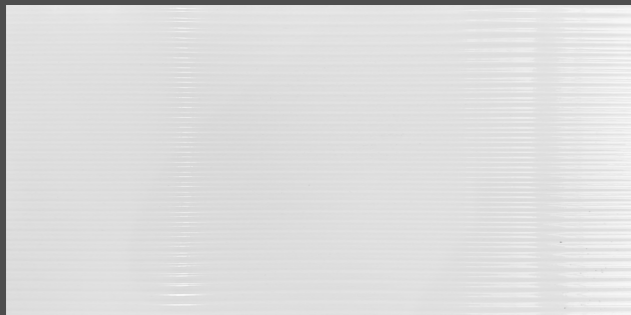
**STA6300-R**

12"x24"/300x600mm



**STA6300-S**

12"x24"/300x600mm



**STA6300-T**

12"x24"/300x600mm



**STA6300-X**









12"x24"/300x600mm

# URBAN 3D

STA6300-F



# Technical Standard

TECHNICAL CHARACTERISTICS		STANDARD TEST METHOD	STANDARD PRESCRIBED VALUES	MAX GLORY VALUES
MEASUREMENT AND SURFACE APPEARANCE				
 LENGTH	EN ISO 10545-2	± 0.5%	± 0.5%	
 WIDTH	EN ISO 10545-2	± 0.5%	± 0.5%	
 THICKNESS	EN ISO 10545-2	± 5%	± 5%	
PHYSICAL PROPERTIES				
 WATER ABSORPTION	EN ISO 10545-3	14-18%	15.8%	
 BREAKING STRENGTH	EN ISO 10545-4	≥ 600N	≥ 1139N	
 MODULUS OF RUPTURE DETERMINATION OF CRAZING RESISTANCE FOR GLAZED TILES	GB/T 3810.11-2006	AFTER TEST THE SAMPLES HAVE NOT ANY CRAZING		
CHEMICAL PROPERTIES				
 CHEMICAL RESISTANCE RESISTANCE TO HOUSEHOLD CHEMICALS AND SWIMMING POOL SALTS	EN ISO 10545-13	MINIMUM GB	GA	
 RESISTANCE TO STAINING	EN ISO 10545-14	MINIMUM CLASS 3	CLASS 5	
SIZE	PC/BOX	SQM/BOX	BOX/PALLET	KGS/BOX
12"x24" - 300x600 9.0mm	8 PCs	1.44	60	21