

## **ASSEMBLY INSTRUCTIONS** **3 TIER BOOKCASE**

**IMPORTANT : READ THESE INSTRUCTIONS CAREFULLY BEFORE ATTEMPTING TO ASSEMBLE OR USE YOUR 3 TIER BOOKCASE.**

**PLEASE KEEP THESE INSTRUCTIONS FOR FUTURE REFERENCE.**

### **ASSEMBLY:**

Assembly should be carried out with this item laying flat, not standing upright.

Assemble on a soft, clean surface to prevent damages.

To erase the numbers printed on the pieces, use the rubber into the accessories pack.

### **HEALTH & SAFETY:**

**DO NOT** use this 3 tier bookcase if any parts are missing, damaged or worn.

**DO NOT** use this 3 tier bookcase unless all fixings are secured.

Always use on a level, even surface.

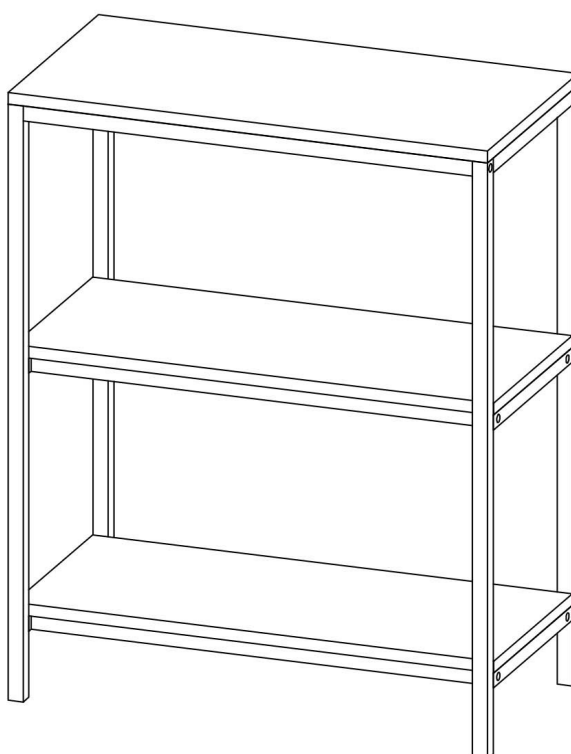
### **CARE & MAINTENANCE:**

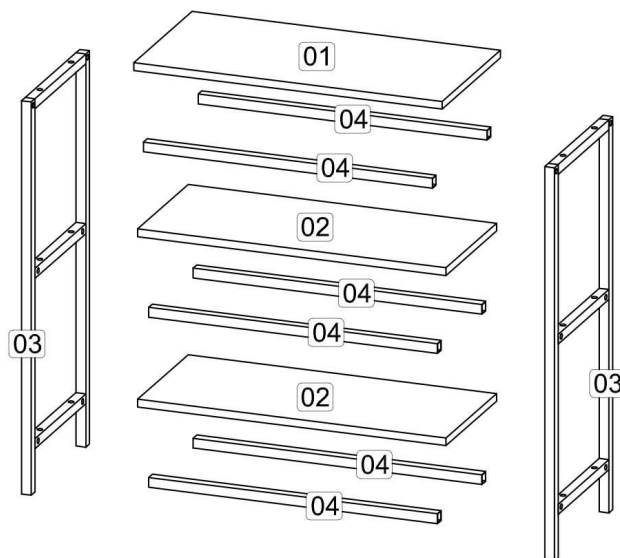
Periodically check all screws & fixings to ensure they are secure.

**DO NOT** push the 3 tier bookcase as this will cause damage.

Always lift the 3 tier bookcase with two people to repositions.

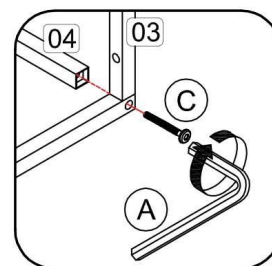
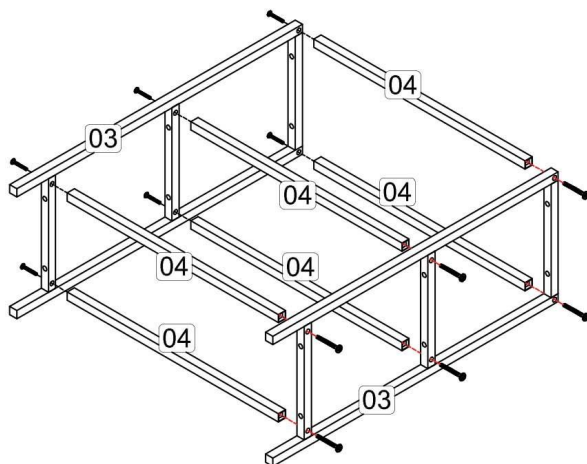
Keep any sharp objects away from the 3 tier bookcase.



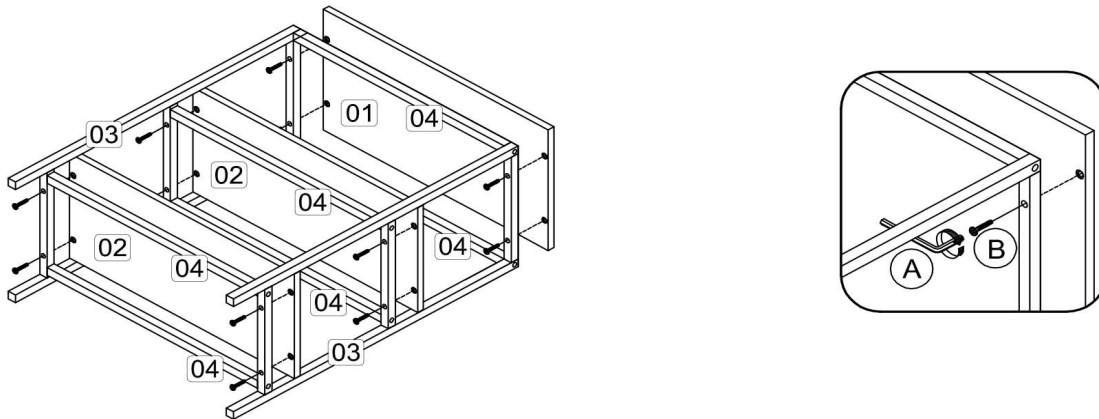


| Parts List   |                             |     | Hardware List |                       |     |
|--|-----------------------------|-----|---------------|-----------------------|-----|
| Part   | Description                 | Qty | Part          | Description           | Qty |
| 01   | Top panel                   | 1   | A             | Allen key M4          | 1   |
| 02   | Middle panel                | 2   | B             | JCBC screw M6 x 30mm  | 12  |
| 03   | Metal Side ( Left & Right ) | 2   | C             | JCBC screw M6 x 40mm  | 12  |
| 04   | Metal Middle                | 6   | D             | M3.5 x 16mm C.B Screw | 2   |
| <b>** You will need a small mallet and a screwdriver for assembly.</b><br><b>** Some screws and wooden dowel may remain.</b> |                             |     | E             | M4 x 38mm C.B Screw   | 2   |
|  |                             |     | F             | 8" x 1" PP tape       | 2   |
|  |                             |     | G             | Wall plug             | 2   |
|  |                             |     |               |                       |     |

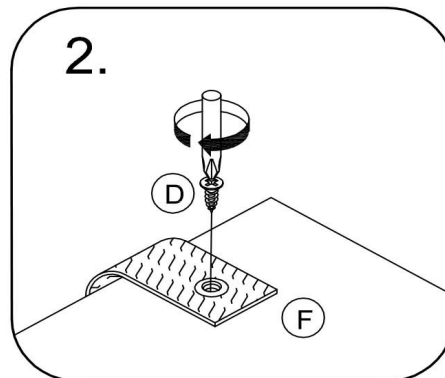
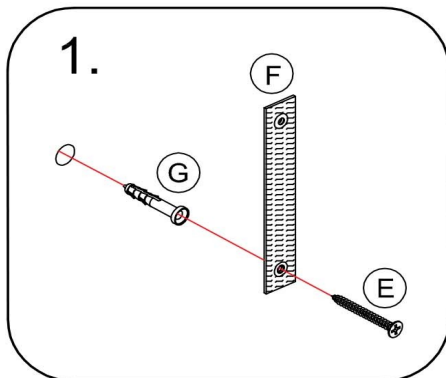
**Step 1:** Attach the Metal Middle (4) to Metal Side (3) using hardware A and C.  
**DO NOT use any power tools as this may damage the frame and will invalidate any claim.**



**Step 2:** Attach the Metal Side (3) to panel (1) using hardware A and B.  
Attach the Metal Side (3) to panel (2) using hardware A and B.  
**DO NOT use any power tools as this may damage the frame and will invalidate any claim.**



**Step 3:** To secure the item to the wall use hardware E, F and G using a screwdriver (not provided).  
Then attach hardware part F to the panel (1) using hardware D with a screwdriver (not provided).  
**DO NOT use any power tools as this may damage the frame and will invalidate any claim.**  
**Birlea Furniture advise you use the wall straps provided to further enhance the safety of this product.**



## Additional Information:

- For complete product information, images and dimension diagrams please visit the website
- If you have any issues with your item please contact the retailer directly you purchased it from who will be able to resolve any issues
- Why don't you send us photos of your assembled furniture to be shared in our feature on instagram.