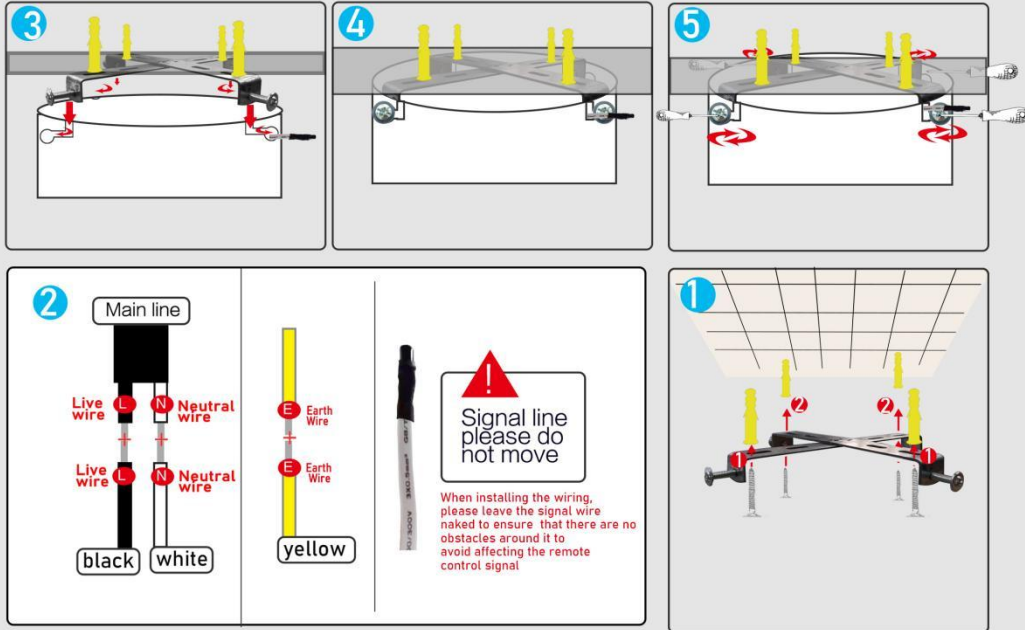


Controller Instruction:

This controller uses wireless digital technology, one-to-one directly control, large effective range, strong anti-jamming, able to control cross the wall.



Precautions:

- 1 Main motor high voltage, non-professional. Please do not disassemble it.
- 2 When equipped with a pull switch as a wall switch, it must be turned on before this control can work.
- 3 If the remote control does not work, please check if the battery is connected correctly, or insufficient power supply, disconnect between Controller and fan lights.
- 4 If not using for a long time, please turn off the power. Turn on the power and remove the control battery.



- ☀️ Long press or tap this key to increase brightness
- ☁️ Long press or tap this key to dim brightness
- 🌈 Long press this key, the color temperature increases, and the light color turns white
- 🌡️ Long press this button, the color temperature will drop and the light will become warmer
- ⚙️ Corresponding to low, medium and high speed fans
 - 1H The reminder function is pressed once, and a beep means 1 hour timer.
 - 2H When the timer function is pressed once, a beep will sound Time 2 hours