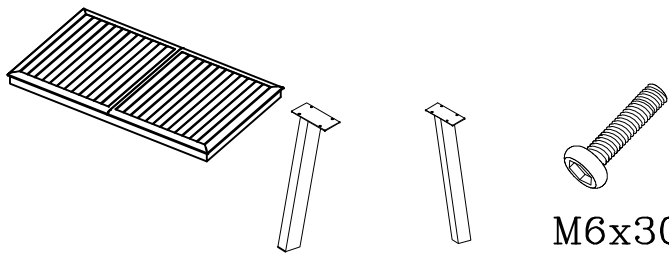
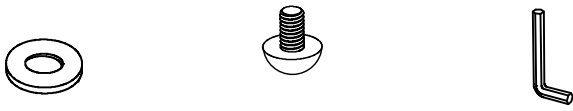
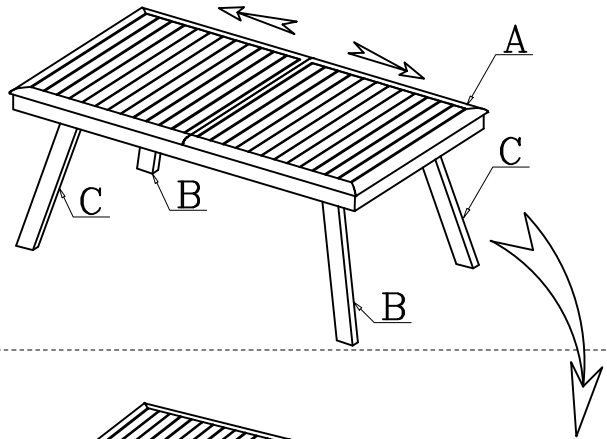


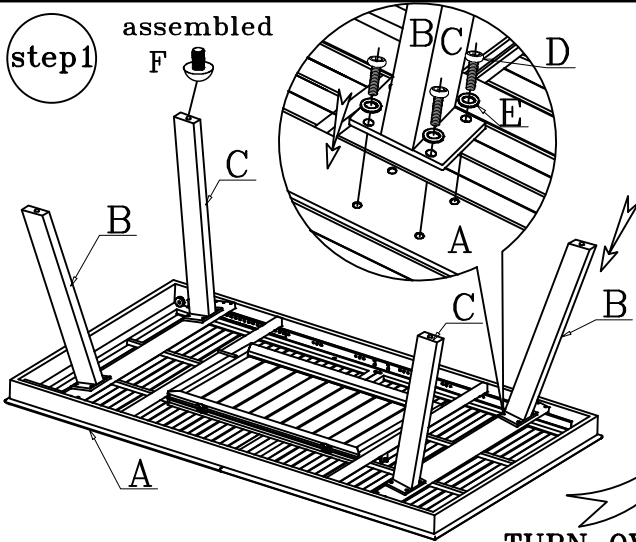
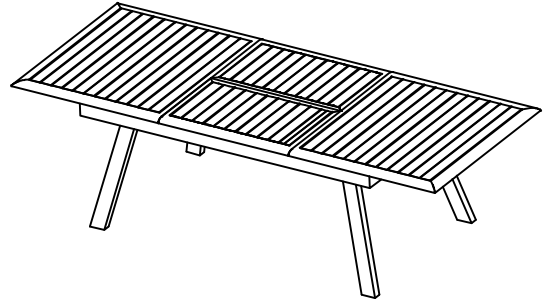
# ASSEMBLY INSTRUCTION



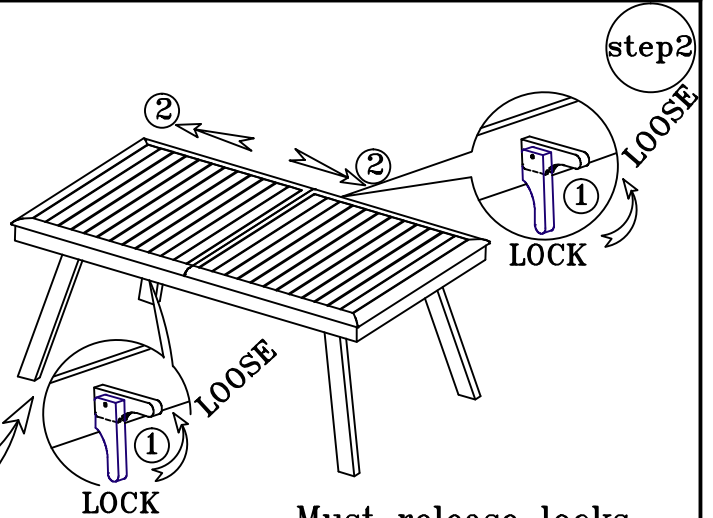
A=1pc B=2pcs C=2pcs D=16pcs



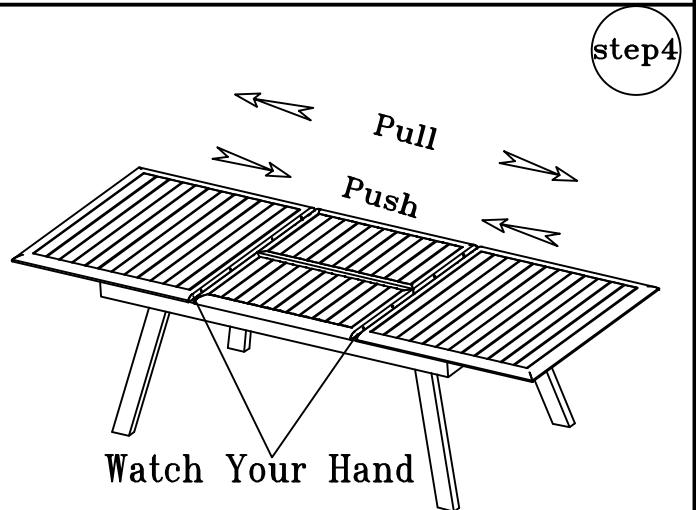
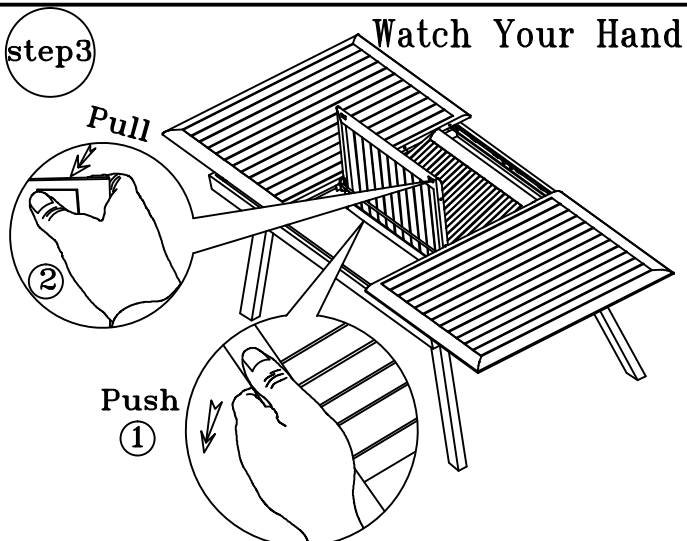
E=16pcs       $\overset{\text{F}}{\text{Foot Pad}}$   
(4pcs assembled)      G=1pc



TURN OVER 180°



## Must release locks



## Watch Your Hand

**ATTENTION:**

After the feet are on the ground smoothly, they can put objects on it, and they can't be overweight.