

The Southshore Difference

✓ Southshore Typical Quilts ✗



Durable Stitched Quilting

Traditional stitching keeps fill secure and prevents shifting.



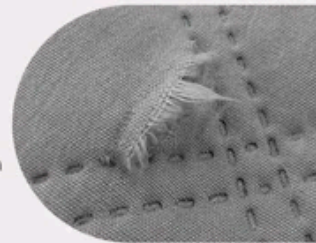
Quilted Both Sides + Envelope Closure

Fully quilted front and back with a clean envelope finish.



Oversized for Better Coverage

Designed larger to provide fuller drape on your bed.



Embossed Pattern

Adhesion used to form the pattern may weaken over time.



Front Quilted Only

Back side often left plain with no quilting.



Standard Size Coverage

Smaller sizing may leave less coverage on the bed.

Our King/Cal King oversized quilt is 108 inches wide x 98 inches long

Standard King Size is 102 inches wide x 86 inches long