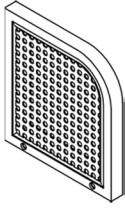
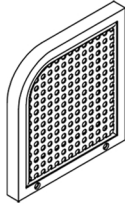


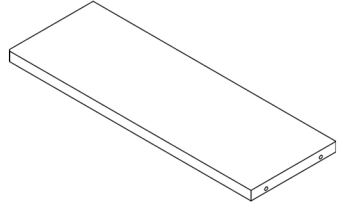
ASSEMBLY INSTRUCTION



A

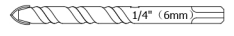
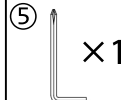
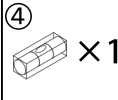
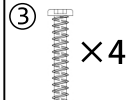
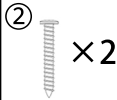
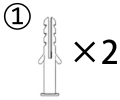


B



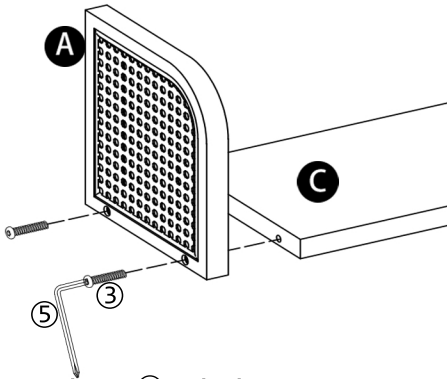
C

Hardware
Parts



self-provided tools
drill bit: 1/4" (6mm)

Installation Steps

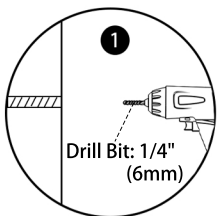
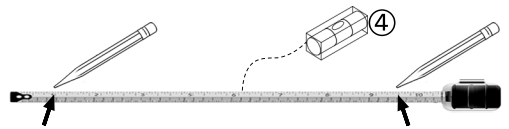


Use screwdriver ⑤ to lock the screws tightly.

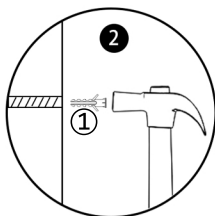
Measure the distance with a ruler.



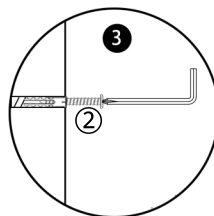
Mark the place where you want to install the shelf and check with a level.



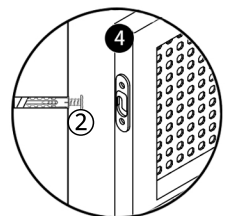
Drill 6 mm holes



Punch the expansion nails



Lock the screws



Hang the shelf