

A: Foreword:

1. Please read this manual carefully before installation and operation.
2. Please pay attention to the warnings, cautions and safety guidelines.
3. Please keep this manual.
4. To get best effect, please choose different distance, heating time and procedure according to different paint, operation condition and actual natural condition.

B: Features:

- Powerful heat penetration directly into inner paint layers to accelerate molecular reaction of paint. Super fast drying for polyurethane paint (double-component paint) for limousine, single-component coating and water-based paint.
- Dries double-component paint within about 15 minutes & single-component coating within 5 minutes or so; while traditional dryer will cost 45 minutes.
- Durable IR bulb (emitter).
- High-light, wide-angle, fully focused reflector. Uniform, focused cure area: no hot or cold spots.
- Cassette can rotate 360 degrees.
- "slide and lock" bracket.
- Replaceable bulb / tube / lamp. Removable grill.
- Cleanable, solvent-resistant reflector.
- Strong, durable column (stainless) and pedestal construction.

C: Warranty:

One year from the date of purchase

D: Specifications:

Input voltage: 235V 50/60HZ (1PH) ◇ IR tubes: 2×1000W
 Max power: 2050W ◇ Rated input current: 10A
 Covering area : 0.5M×0.8M ◇ Temperature: 60℃--70℃
 ◇ Recommended curing distance: 50cm (please adjust it according to actual conditions)

E: Safety instructions:

1. Do not modify or neutralize safety elements; Do not modify the technical specifications of the product.
2. Often clean reflector and lamp tube with moistened fabric or cotton and keep them clean. Do not use this equipment until 20 minutes after cleaning; otherwise, lamp tube will be broken easily.
3. This product must be earthed.
4. Do not use this product in a spray booth where there may be flammable gas.

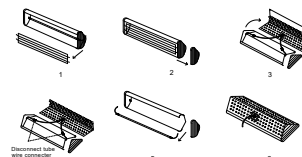
5. Air must be decontaminated for working area if this product is used in spray booth.
6. It must be protected with a 10 AMP fuse.
7. Isolate power supply before removing covers.
8. DO NOT move this machine during operation as this may lead to premature lamp failure.
9. This machine must not be pointed at personnel or easily flammable objects.
10. Do not bump or knock this product.
11. Avoid hard objects to get inside of cassette.
12. Pay attention to uneven floor when moving this product and avoid overturning it.
13. Remove packing pieces from cassette before use.
14. Remove all things in front of lamp tube before turn on it.
15. Keeps lamp away from paint spraying area at least 4 meters before starting this equipment.
16. Do not hold mains cable to move this product.
17. If lamp doesn't work when turn on this product, connecter of lamp maybe loosened. Turn off power and connect lamp again.

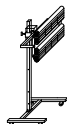
F: Suggested drying time (Minutes):

Paint type	Flash-off	Cure
Waterborne basecoat	2-5	5
Filler/Stopper	2-5	5-7
Primer	2-5	6-8
Waterborne primer	2-5	8-10
Hi-build	2-5	10-12
Solid-color	2-5	11
Clear coat	2-5	12

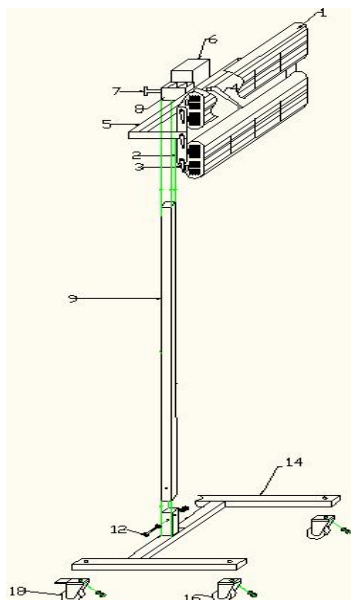
G: Replacing lamp tube:

1. Disconnect unit from mains power supply.
2. Remove grille.
3. Remove side cover of cassette.
4. Slacken heat dissipation cover that is in the back of cassette.
5. Slacken and disconnect lamp tube wire connecter.
6. Take out the tube, replace or fit tube as the broken one, and connect wires as before.
7. Refit grille、heat dissipation cover and side cover of cassette in turn.
8. Use a soft cloth with solvent such as Methylated Spirits to clean reflector board, side cover and tubes.





H: Installation instructions:



1. Install casters 16, 18 with stand 14.
2. Connect column 9 with stand 14; use screws and relevant bolt to fasten.
3. Put bracket 8 up to column 9. Screw down bracket handle 7.
4. Connect plug with suitable socket.
 - ①. Live wire (Brown); Naught wire (Blue); Earth wire (Yellow and green) .
 - ②. Power supply: 220V 50/60Hz, 1 phase, 10Amp.
 - ③. Remove sticker on grille and cushions under tubes before turning on this product.
 - ④. When adjusting cassette height, use one hand to hold cassette, and screw bracket handle with the other hand. And then hold the cassette and slide bracket up or down with two hands. To avoid damaging lamp, do NOT move it with only one hand.

I: Operation instructions:

A Move dryer to obtain optimal distance (recommended distance: 50cm). **B** Plug timer and set timing. **C** Plug timer to power supply socket.

K: Troubleshooting:

Problem	Possible cause	Possible solution
Uneven cure	I.R cassettes not shaped to contours of repair	Adjust I.R. cassettes for even heat distribution
Solvent popping	1. Unit too close to panel; 2. Insufficient warm-up time; 3. Paint system has a fast thinner	1. Move unit further away; 2. Increase warm-up time; 3. Use a standard or slow thinner
Under cure or softness of paint film	1. Unit too far away; 2. Insufficient bake time; 3. Excessive film weight	1. Move unit closer; 2. Increase full bake time; 3. Apply lighter coats
Difficulty in polishing out dirt nibs	1. Too long on bake cycle; 2. Unit too close to panel	1. Reduce cure time; 2. Move unit further away.
Softness on edges of repair	Repair too large for I.R. unit	1. Split area into two; 2. Move unit for 2 nd application; 3. If warm-up is used, it will not be necessary on 2 nd application.