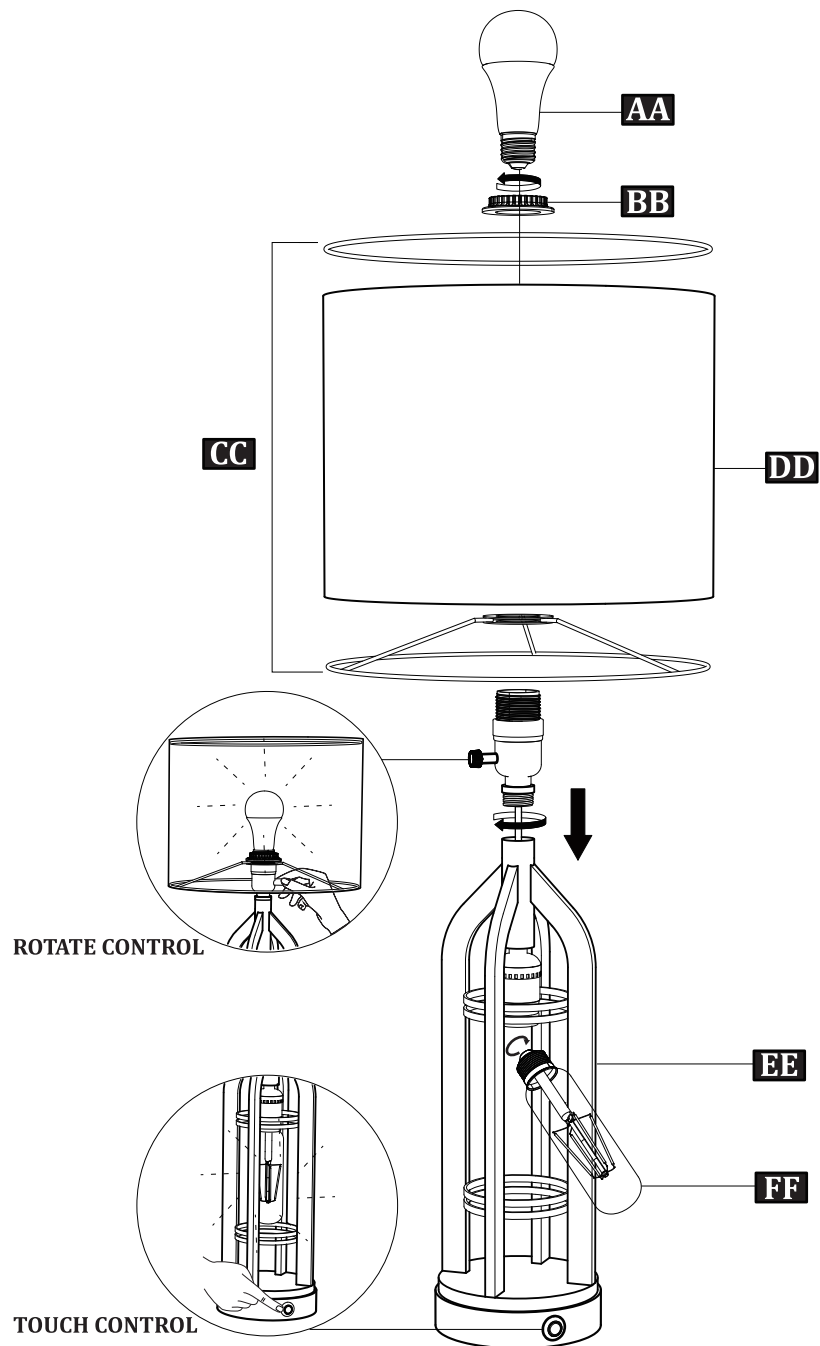


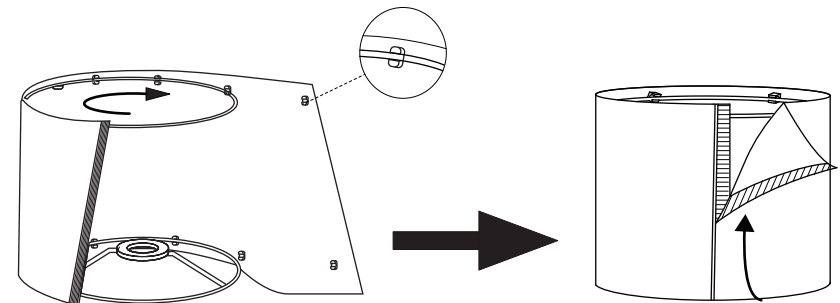
INSTALLATION DIAGRAM



AA*2	BB*2	CC*2	DD*2	EE*2	FF*2

EASY INSTALLATION

- STEP1** Fit the CC part in the DD part, attach one edge of the velcro to another.
- STEP2** Follow the left picture, put the cord line into the lamp pole and screw two parts together.
- STEP3** Fix the **lampshade** part on the EE part and screw the BB part.
- STEP4** Install the AA part and FF part.



PRODUCT SPECIFICATIONS

Input: 110-120V~, 60Hz
AC outlet: 600W

USING TIPS

Turn on/off the upper bulb with rotating the switch from the socket.
Turn on/off the lower bulb with touching the round sensor on the base.

TROUBLE SHOOTING

- 1.If your lamp does not work, please make sure that plug is firmly in and rotating the knob switch or touch the round sensor to turn on/off the lamp.
- 2.If you have other questions, please feel free to contact us.

CUSTOMER SERVICE & WARRANTY

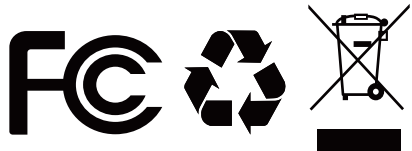
Thank you for your support and purchase of our products.
If you encounter any problem after receiving the goods or during the use of the products,

We have a professional customer service team to serve you.
Your email will receive a reply within 24 hours after it is sent.

Here is the way to contact us:

- 1.Log in your account
- 2.My Account --> click "Help & Contact"
- 3.Choose the specific item you want to communicate with us
- 4.Send your message or email
- 5.You will receive our reply within 24 hours

Note: Our products have a two-year warranty.
If the product cannot be used normally within the warranty, please contact us,we will do our best to give you a satisfactory answer.



This device complies with Part 15 of the FCC Rules. Operation is subject to the following two conditions: (1) this device may not cause harmful interference, and (2) this device must accept any interference received, including interference that may cause undesired operation.

USER GUIDE

