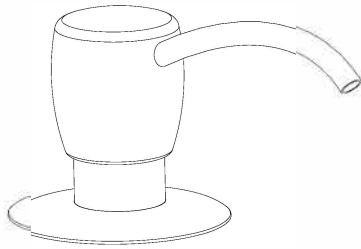


INSTRUCTION

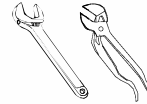


Soap Pump

Model NO.: UFP-0021
 UFP-0321
 UFP-0521

Tools:

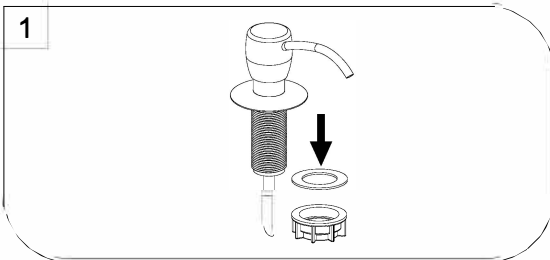
- Adjustable Wrench
- Pliers



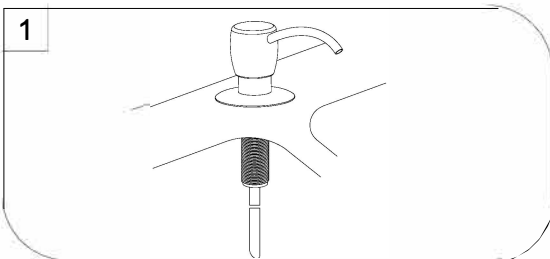
Maintenance:

Your new soap pump is designed for years of trouble-free performance.
 Keep it looking new by cleaning it periodically with a soft cloth.
 Avoid abrasive cleaners, steel wool and harsh chemicals as these will dull the finish and void your warranty.

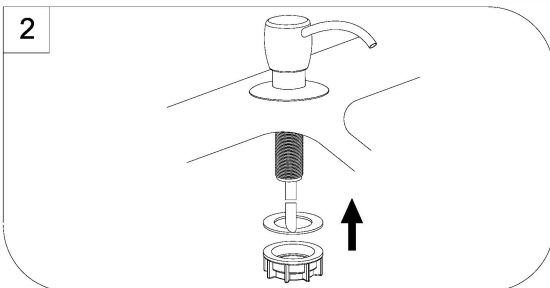
Preparation / Assembly



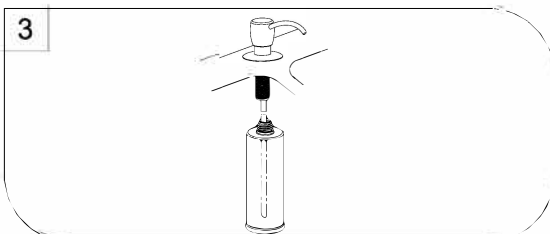
Loosen the nut and slide out the plastic washer.



Place Soap Pump Head and Flange through mounting hole.



Secure the Soap Pump to sink by installing plastic washer and nut onto it. Tighten with wrench.



Tighten the bottle.

Exploded Drawing RP(Replacement Parts)

