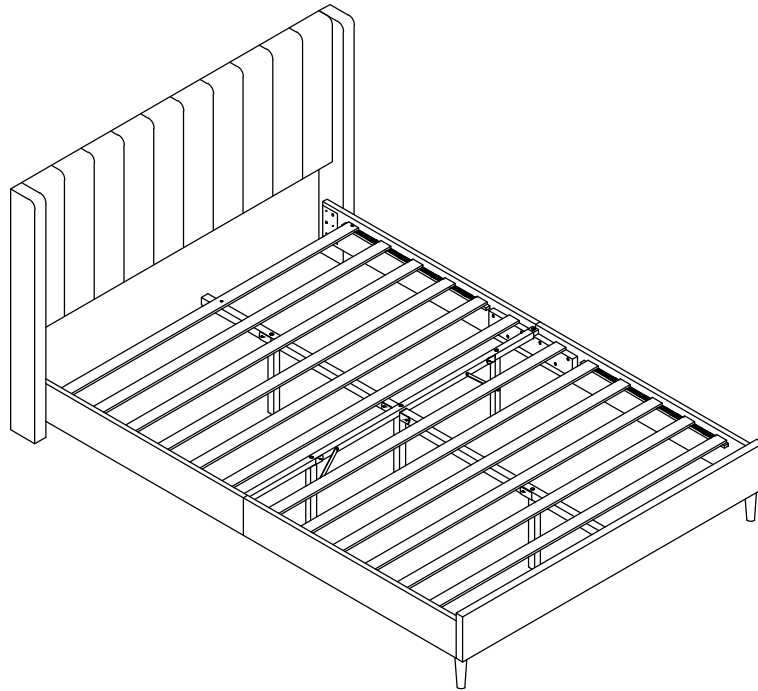
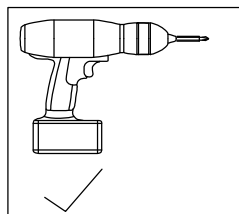


# STANDARD BED

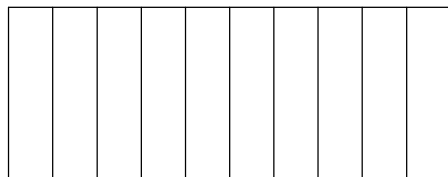


## IMPORTANT NOTE

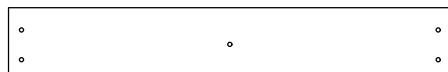
1. **ALL OTHER PART INSIDE THE HEADBOARD PLEASE OPEN THE ZIPPER OF HEADBOARD, AND TAKE OUT ALL OTHER PART BEFORE ASSEMBLY.**
2. FOR THE PROTECTION OF YOUR FURNITURE, PLACE ALL PARTS ON A CLEAN AND SMOOTH SURFACE TO PREVENT ANY DAMAGE.
3. DO NOT USE POWER TOOLS TO ASSEMBLE THE BED.
4. PLEASE PERIODICALLY CHECK ALL FITTINGS AND RE-TIGHTEN AS NECESSARY.
5. DO NOT USE THE BED UNLESS ALL BOLTS AND SCREWS ARE FIRMLY SECURED.
6. NEED PARTS OR ASSISTANCE? EMAIL US.
7. YOU CAN ASSEMBLE IT WITH OUR PACKAGING TOOLS OR WITH A.



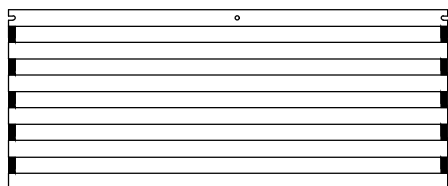
## PART LIST



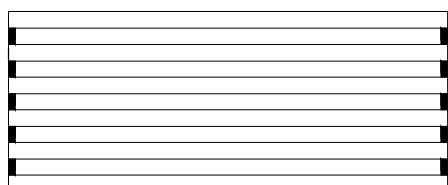
① x 1pc



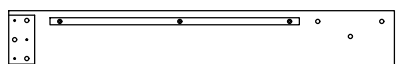
② x 1pc



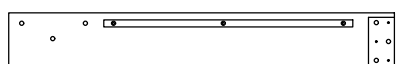
③ x 1pc



④ x 1pc



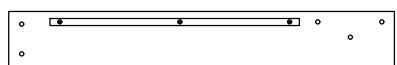
⑤ x 1pc



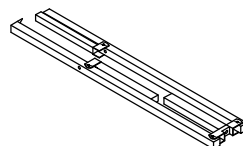
⑤ x 1pc



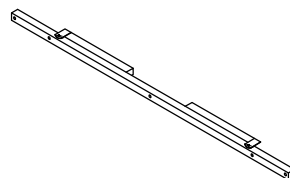
⑥ x 1pc



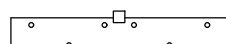
⑥ x 1pc



⑦ x 1pc



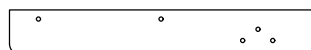
⑧ x 1pc



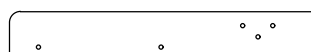
⑨ x 2pcs



⑩ x 2pcs



⑪ x 1pc



⑫ x 1pc

## HARDWARE LIST



H1 M5 x 1pc



H2 M8x20mm x 9pcs



H3 M8x35mm x 7pcs



H4 M8x40mm x 24pcs



H5 M8 x 41pcs



H6 M8x17mm x 19pcs



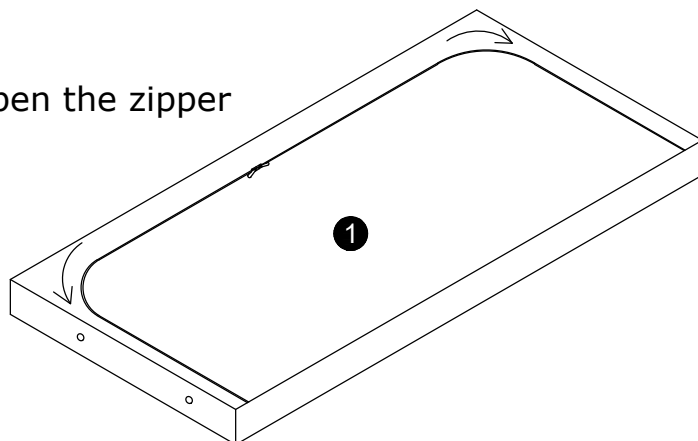
H7 M8x22mm x 10pcs



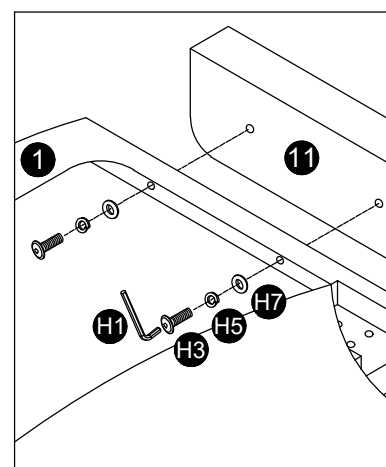
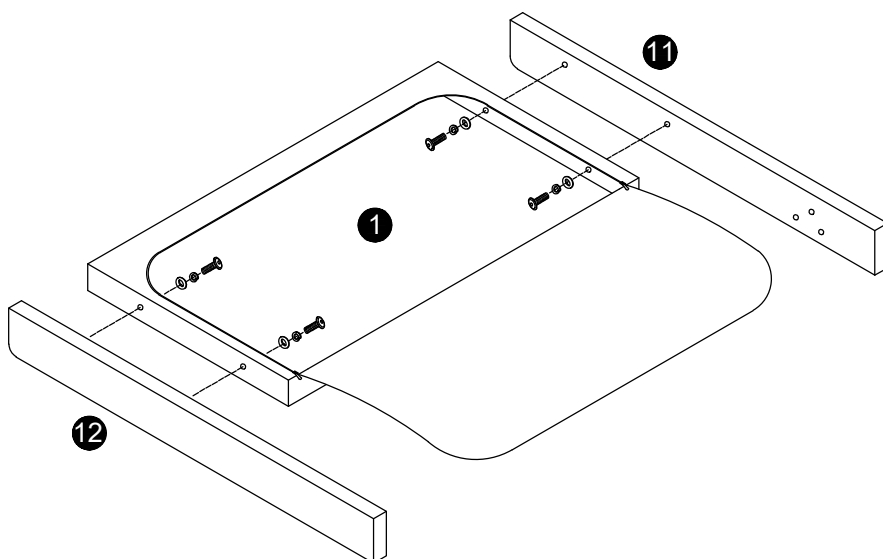
H8 M8x60mm x 1pc

**1** **NOTE:** PLEASE OPEN THE ZIPPER ON THE BACK OF **1** AND TAKE OUT THE PARTS.

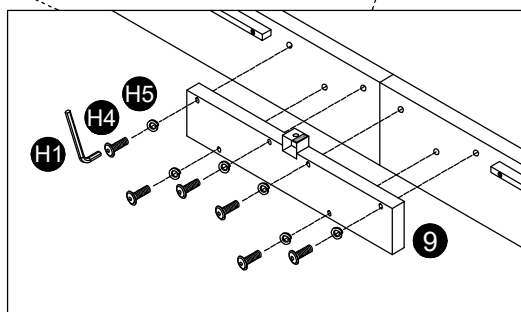
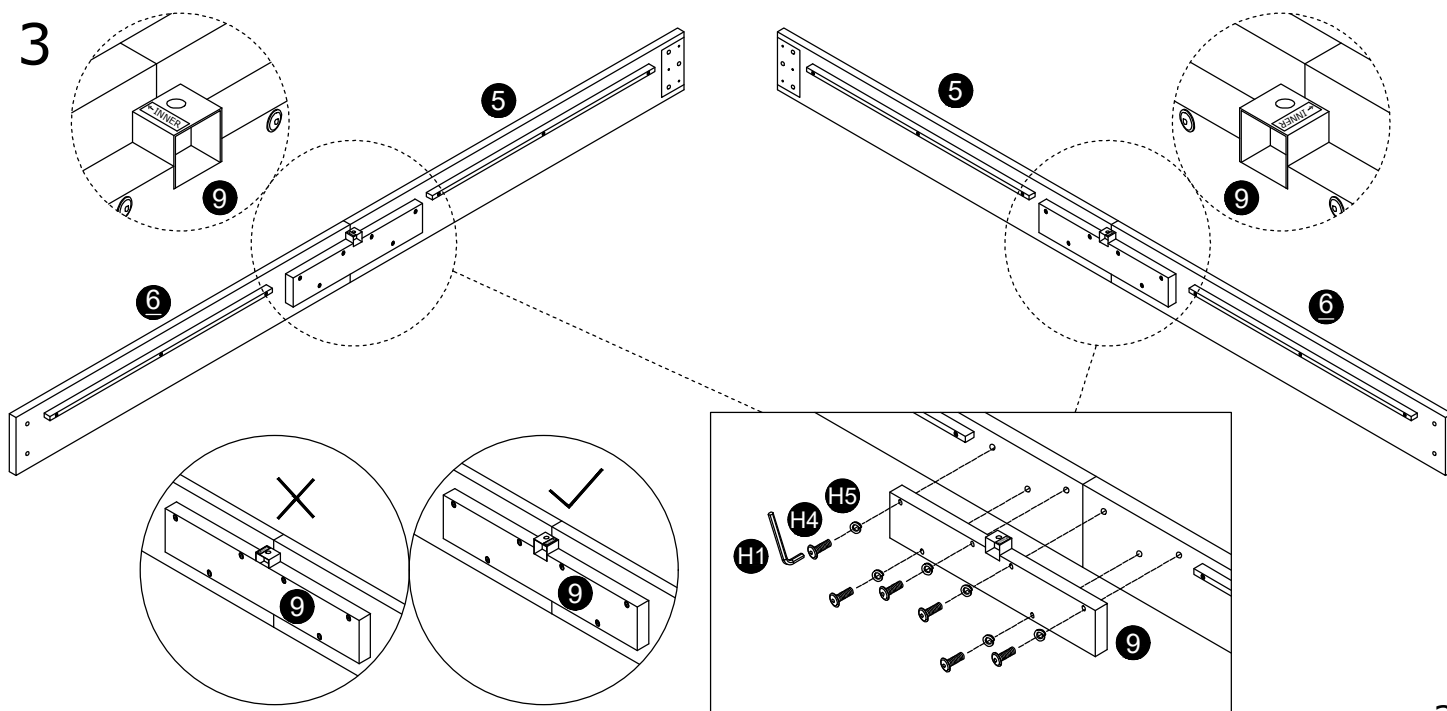
Open the zipper



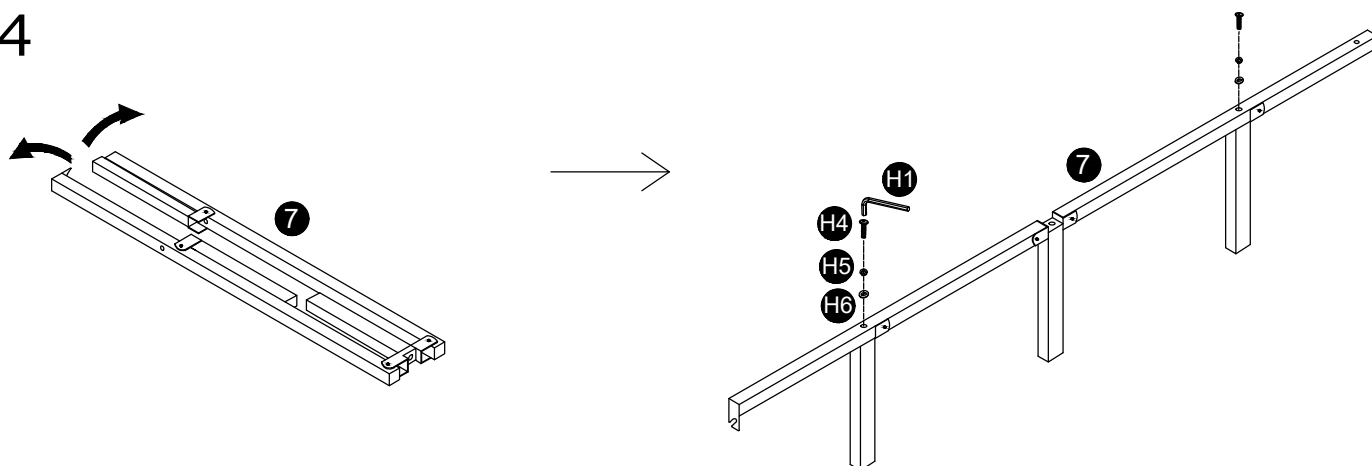
**2**



**3**

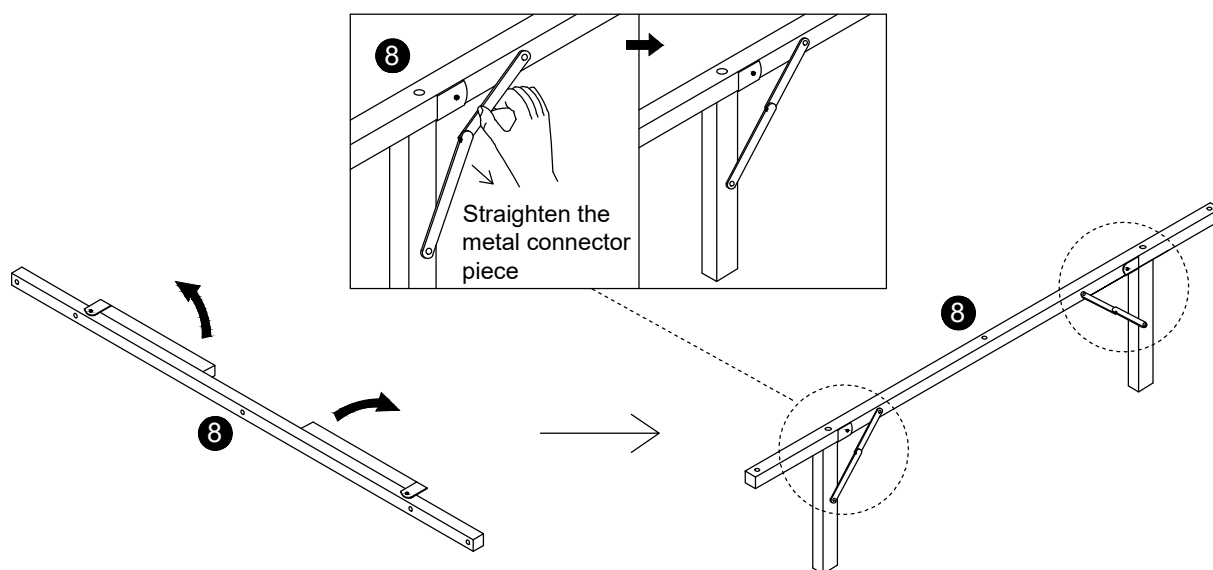


4

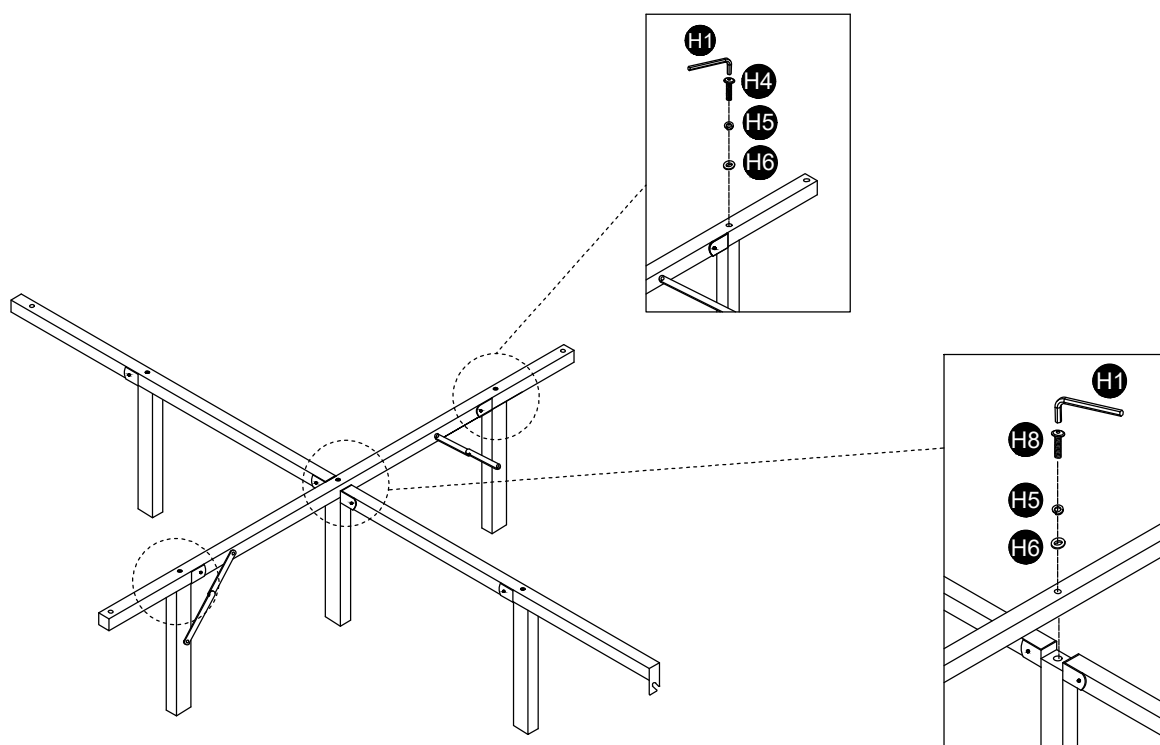


5

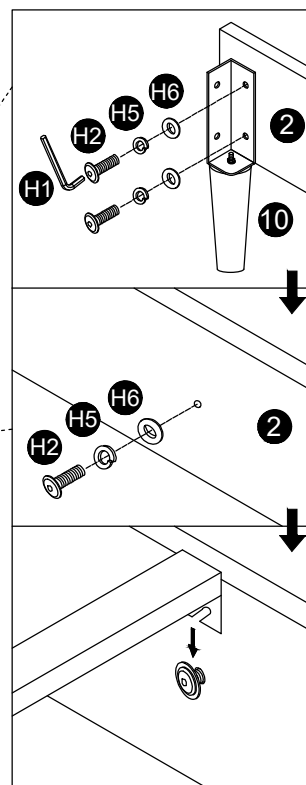
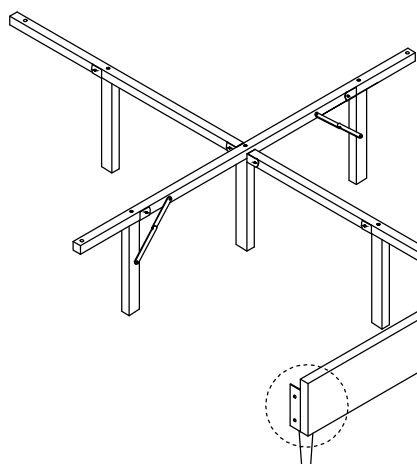
BEWARE OF CLAMP HAND



6

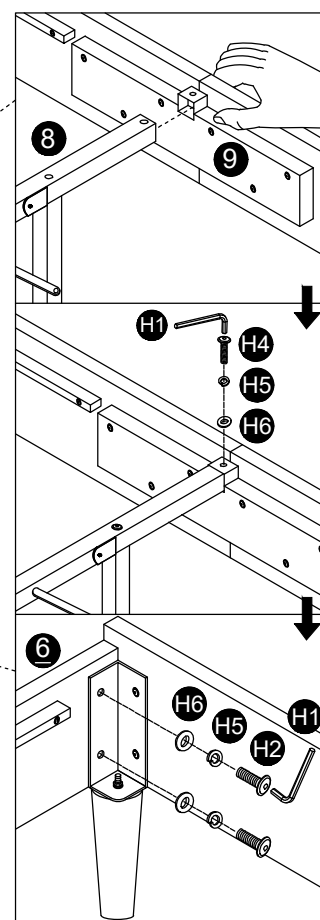
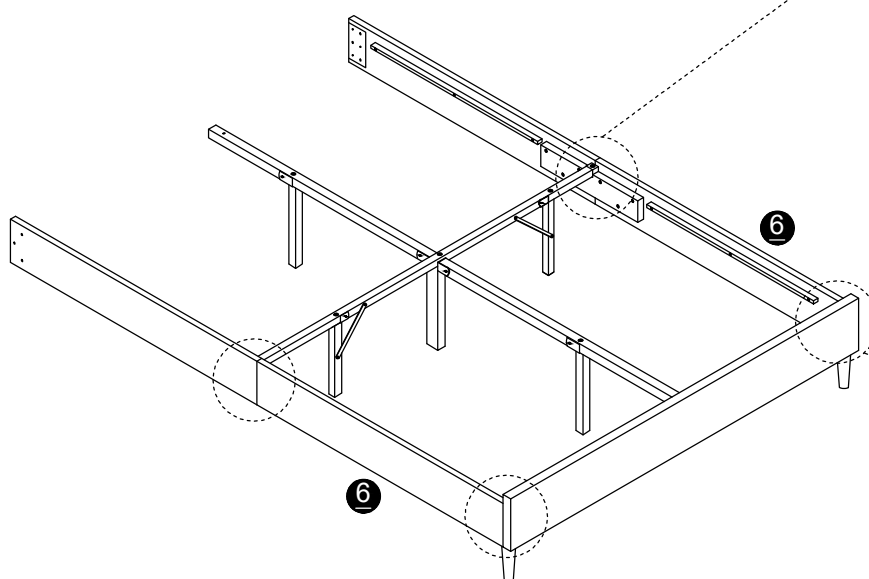


7



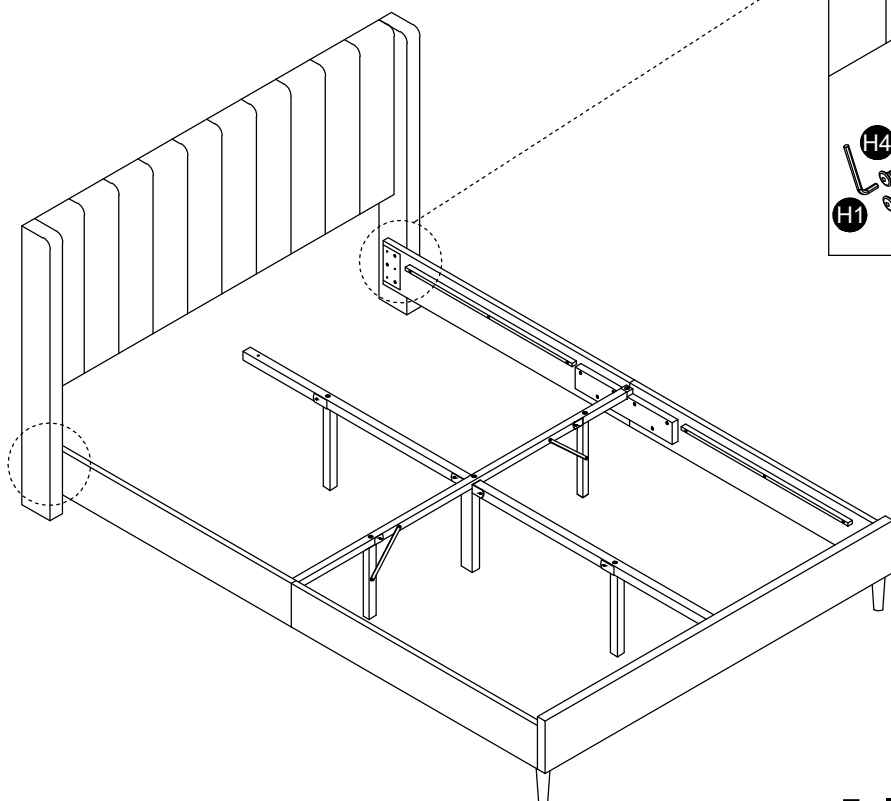
**Do not fully tighten fixings!**

8



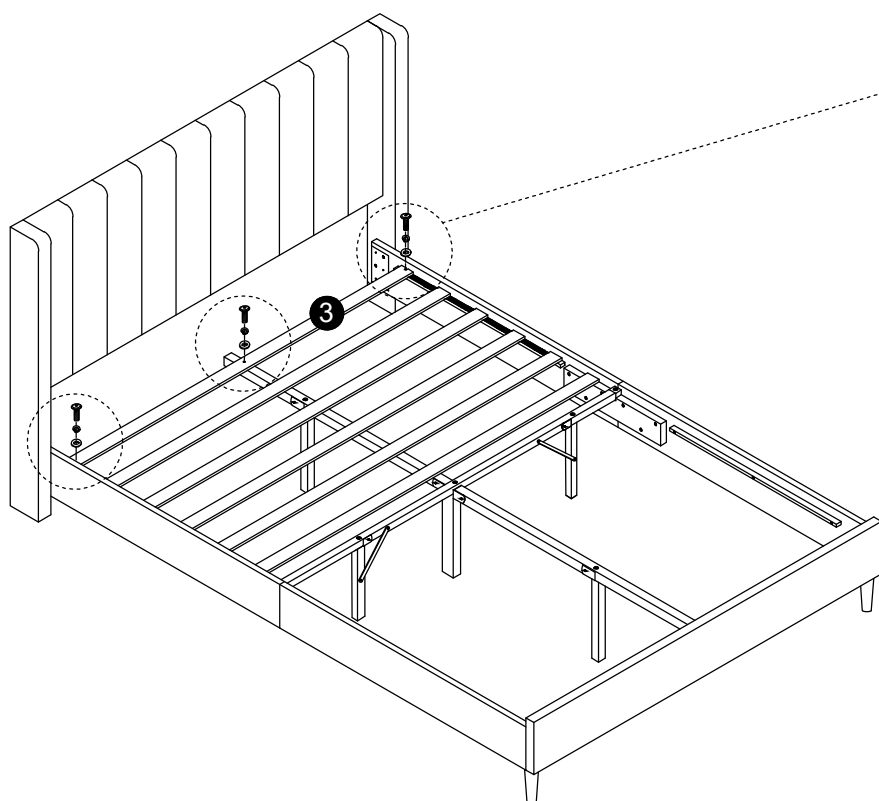
**Do not fully tighten fixings!**

9

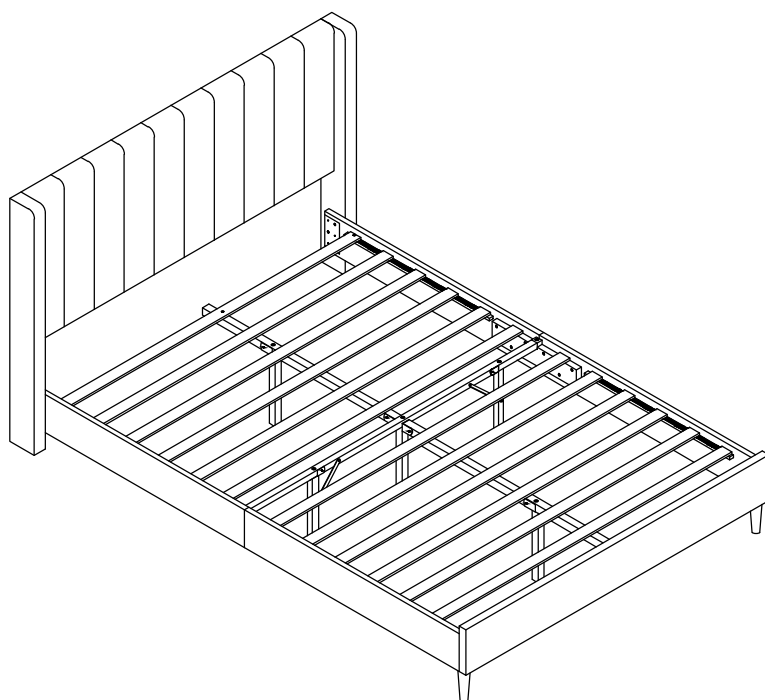
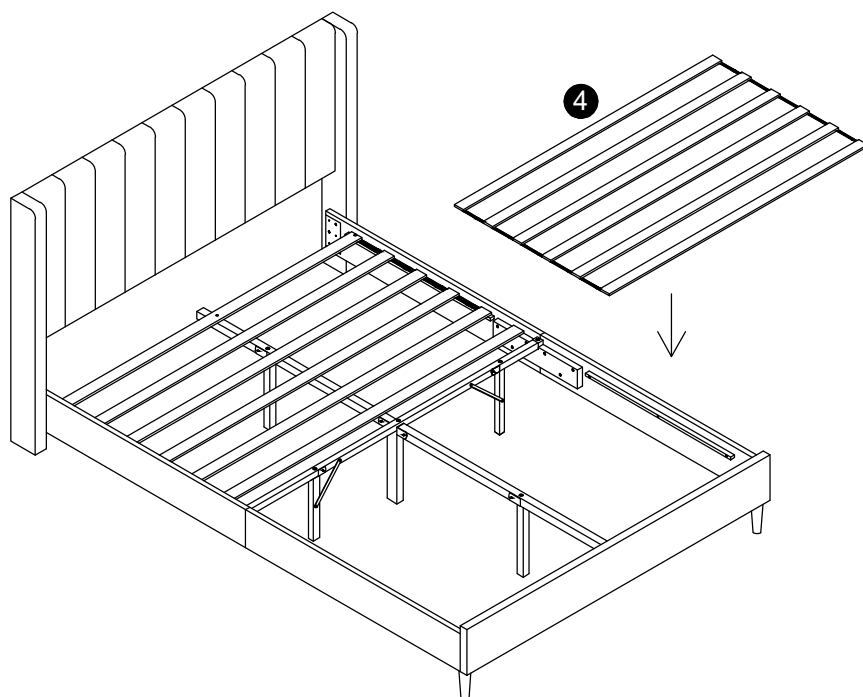


Fully tighten all fixings.

10



11



**Job Complete !**

*In the interest of our environment please dispose of all packaging thoughtfully.*