

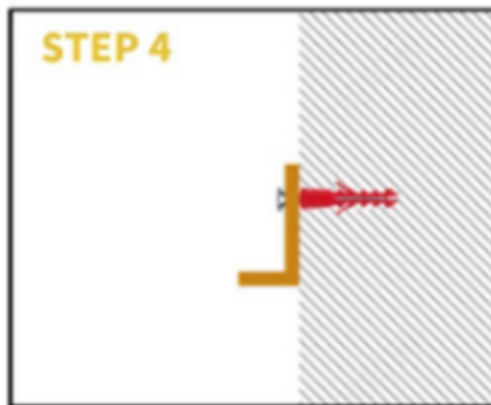
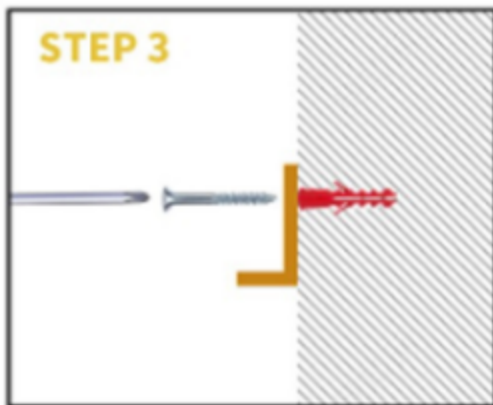
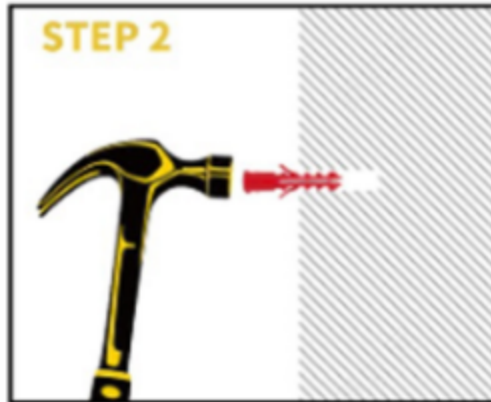
# Assembly Instructions for **Model HL1641882**



## Precautions Before Assembly:

### Expansion Screw Installation Tutorial

# INSTRUCTIONS



## **Installation steps**

1. Remove the Mounting Bracket from ceiling canopy of Fixture Body. Mark the drilling position on ceiling with the help of the Mounting Bracket.

Drill holes on the marks and stick the expansion anchors into the holes. Fix the Mounting Bracket to the expansion anchors with self-tapping screws.

2. Hold the fixture close to ceiling.

Connect live line to one of the two wires from the Fixture Body.

Connect neutral line to the other wire from the Fixture Body.

3. Install the canopy onto the mounting brackets.

**The installation is complete.**

Your fixture is now assembled and ready to use.