



ASSEMBLING & INSTALLATION INSTRUCTIONS

The drawing shown may not exactly match the product enclosed. However, the installation instructions do apply to this product.

WALL-MOUNTED LED BATHROOM MIRROR OPERATIONS MANUAL

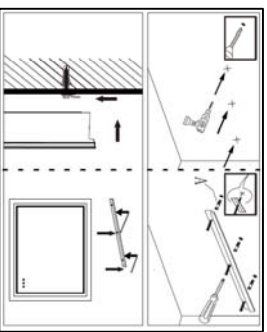
Packing List

- Hanging Bracket*1
- Cleat*2
- Instruction Manual
- LED Bathroom Mirror

SAFETY INSTRUCTIONS

- 1 Please read the instructions carefully before using.
- 2 Do not disassemble or sell the products.
- 3 Press touch sensor button properly.
- 4 Handle with care during installation or moving.
- 5 Keep the mirror dry, moisture reduces the sensitivity of the product.
- 6 Turn off the power before cleaning. The surface of the mirror should be cleaned with glass cleaner. Please make sure the mirror is completely dry before using.
- 7 Turn off the power and avoid direct sunlight if not used or stored for a long time. Keep it away from children.
- 8 Do not approach or put the product into the fire in case of fire or explosion.
- 9 Stop using it immediately if abnormal condition occurs.

INSTALLATION METHOD



- 1: Measure the distance of the aluminum strip behind the mirror with a tape measure.
- 2: Mark at the determined installation positions and draw an auxiliary line with a pencil.
- 3: Drill holes at installation positions with an electric drill.
- 4: Hammer the expanded plastic material into the holes
- 5: Take out the metal hanging piece and use a screwdriver to fix the hanging pieces on the wall with screws.
- 6: Point the aluminum strip at the metal pieces and hang the mirror on the wall

OPERATING INSTRUCTIONS

Please use standard plug to connect the power directly.

The boot is the color temperature of the last shutdown, with a memory function. Press to turn the light on/off. Long press to adjust the brightness.

Press the switch to adjust the different color temperature of the light. You can choose warm, natural or cold light

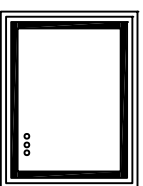
Press switch to turn on/off the anti-fog.

The button lights blue when the demister is on.

Unplug when it is no used.



ILLUSTRATION



LED light
High definition mirror
Press to turn on / off the light
Press to change the different colors
Press to turn on/off the defogger



ASSEMBLING & INSTALLATION INSTRUCTIONS

The drawing shown may not exactly match the product enclosed. However, the installation instructions do apply to this product.

Dear Customer:

Thank you for your business!

If you have any question or problem, please send us an email to support

@xxxxxxxxxxx.com or call us at xxx-xxx-xxxx.

We will do everything possible to make you completely satisfied with your purchase.

Product reviews help future customers to make their purchase decision. You are

encouraged to share your experience by leaving a short product review on the

platform where you bought this product.

Thank you!

Warning: If any special control devices are used with this fixture, follow the instructions carefully to assure full compliance with N.E.C. requirements. If there are any questions, contact a qualified electrical contractor.

Caution: It is highly recommended to get an electrician to install this light. Please make sure to turn the electricity off at the main circuit breaker before beginning installation. All glass is fragile. Use care when handling glass component (s) and/or lamp(s).

SPECIFICATIONS

- [Product Name] LED bathroom mirror
- [Material] Aluminum frame + Glass
- [LED Color Temperature] 3000-4500-6000K
- [LM] 3000LM
- [Power Supply] Powered driver AC:120V
- [Output] Around 38W



SPECIAL FEATURE

- 3/16 inch Thickness high definition eco-friendly glass mirror
- With switching and dimming function
- Free to switch between warm, natural and cool light
- With anti-fog function
- Built-in power plug