

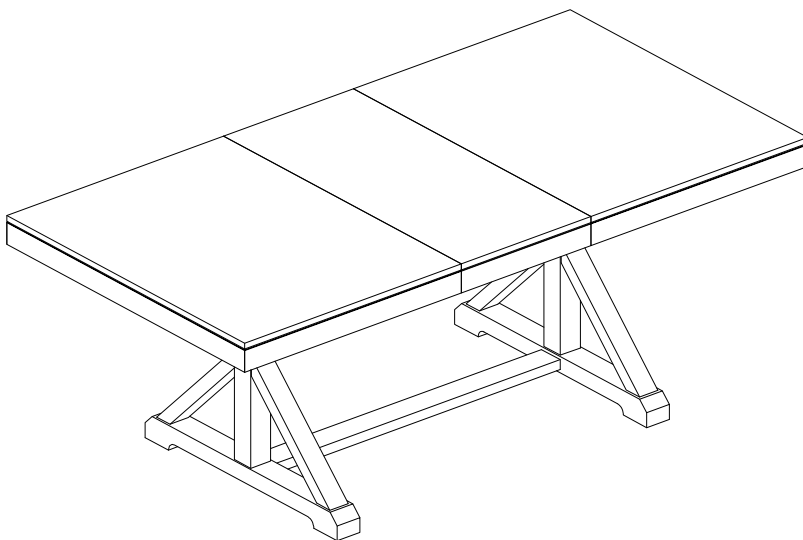
ASSEMBLY INSTRUCTIONS

TOOLS REQUIRED



Allen Wrench

(Included)



2 - People
Recommended

ASSEMBLY RATING



EASY —————> DIFFICULT

The Assembly Rating is a 5-point system showing the level of effort needed to assemble a specific product.



CHECK BEFORE STARTING

☐

Are you missing anything?

Double-check all parts, hardware and accessories listed on Page 6 are accounted for.

☐

Check out our Quick Tips!

We recommend reviewing the pre-assembly handouts. Even experts need a refresher now and then!

☐

Should we send any replacements?

Are there any irregularities or flaws in the parts? We can send replacements!

☐

Prep Time!

Please review the assembly instructions and all diagrams prior to assembling. Arrange parts as recommended on Page 7 and group identical hardware together to make assembling easier.

PRE ASSEMBLY INTRODUCTION

We understand building ready-to-assemble furniture can be a challenging experience for some. To help avoid confusion, we have provided some helpful tips that may speed up the process.



Teamwork

ALWAYS have at least two people to help with transporting and assembling the product to avoid potential injury and/or damage.



Suitable Location

Assembling near the area of the intended location is highly recommended.



Sufficient Space

Make sure you have enough space to move around during the assembly.



Avoid Scratches

Use cardboard, blankets or a carpeted area while assembling furniture to prevent scratches.



Flat Surface

Make sure the furniture rests on a flat and level surface with each leg evenly touching the floor.

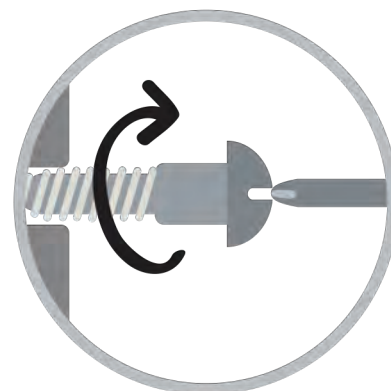
ASSEMBLY AND CARE ADVICE



**FAILURE TO FOLLOW THE GUIDELINES BELOW MAY
RESULT IN INJURY AND/OR PROPERTY DAMAGE.**



Position each part correctly
and insert screws or bolts into
their respective holes.

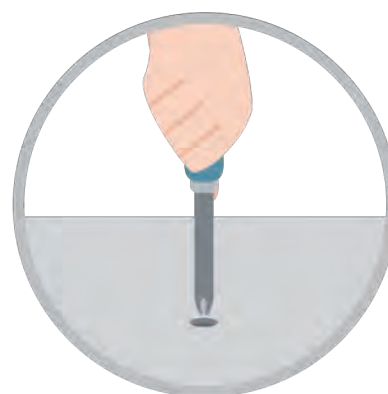


Turn clockwise to tighten and
only tighten when step is
completed or when instructed
to do so.



Save the instructions and store
any supplied tools for later
maintenance.

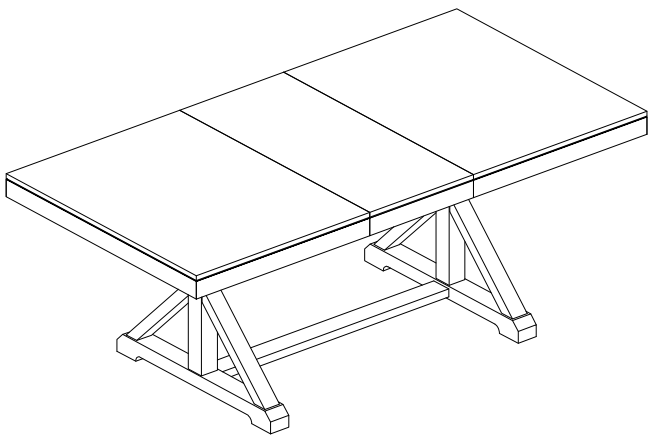
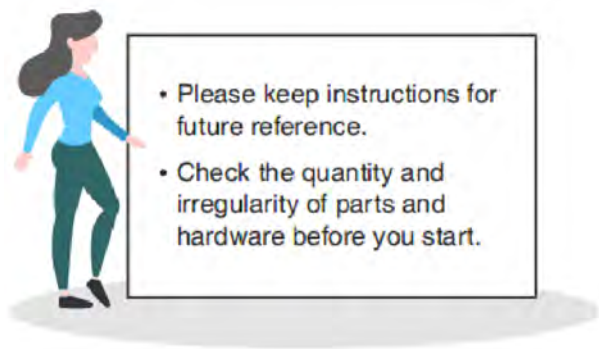
Use the appropriate hand tools
or power tools for assembly.
Select steps, such as tightening
screws and/or bolts, may require
hand tools to avoid causing
damage during assembly.



After two weeks, check and
tighten any loose hardware and
repeat again every six months
thereafter.

IT IS THE USER'S RESPONSIBILITY TO MAINTAIN THE FURNITURE. THE HARDWARE MAY LOOSEN OVER TIME AND MAY CAUSE THE FURNITURE TO BE WOBBLY AND UNABLE TO SUPPORT ITS INTENDED WEIGHT CAPACITY. THIS MAY LEAD TO COLLAPSE AND MAY CAUSE SERIOUS INJURY.

TABLE



PARTS

#1 1pc

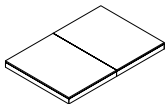


Table Top

#2 1pc

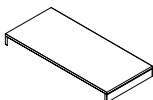
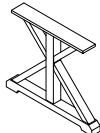


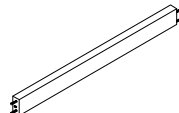
Table Leaf

#3 2pcs



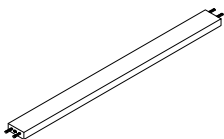
Leg

#4 1pc



Up Crossbar

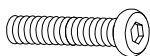
#5 1pc



Bottom Crossbar

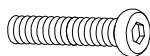
HARDWARE

#A 8pcs



Bolt
Ø5/16" x 1-1/2"

#B 4pcs



Bolt
Ø5/16" x 2-3/4"

#C 12pcs



Lock Washer
Ø5/16"

#D 12pcs



Flat Washer
Ø5/16"

#E 1pc

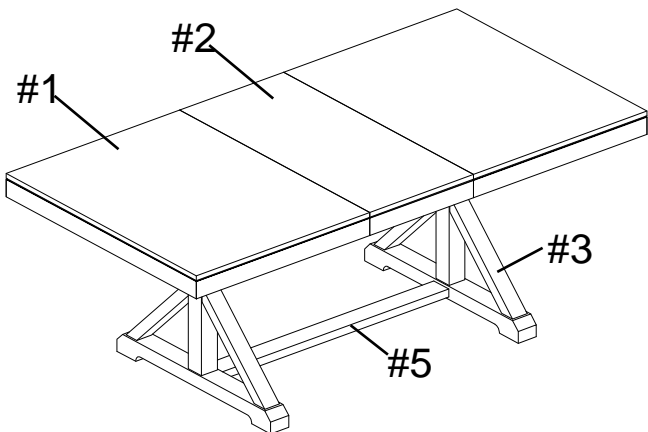


Allen Key 4mm

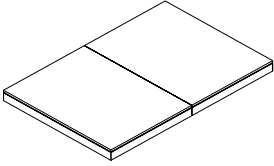


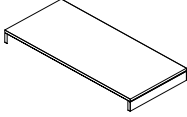
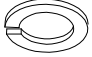

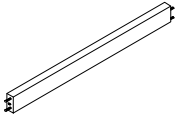

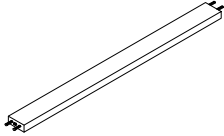

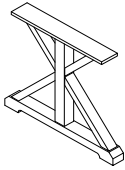
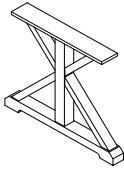
#F 4pcs



Wood Nut



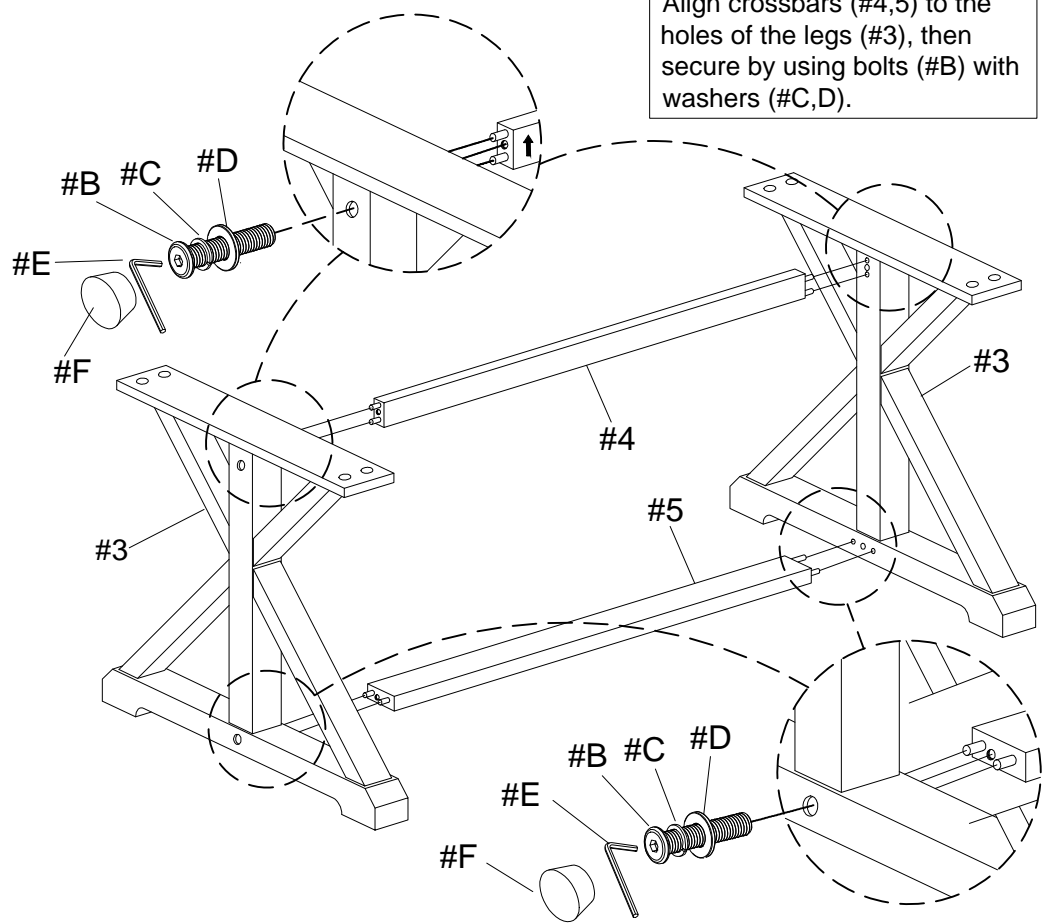
2 cases

Carton	Disignation	Part		Hardware
1	Table Top	#1		 #A x8pcs  #B x 4pcs
	Table Leaf	#2		 #C x12pcs  #D x12pcs
	Up Crossbar	#4		 #F x1pc
	Bottom Crossbar	#5		 #E x4pcs
2	Leg	#3	 	

ASSEMBLY INSTRUCTIONS

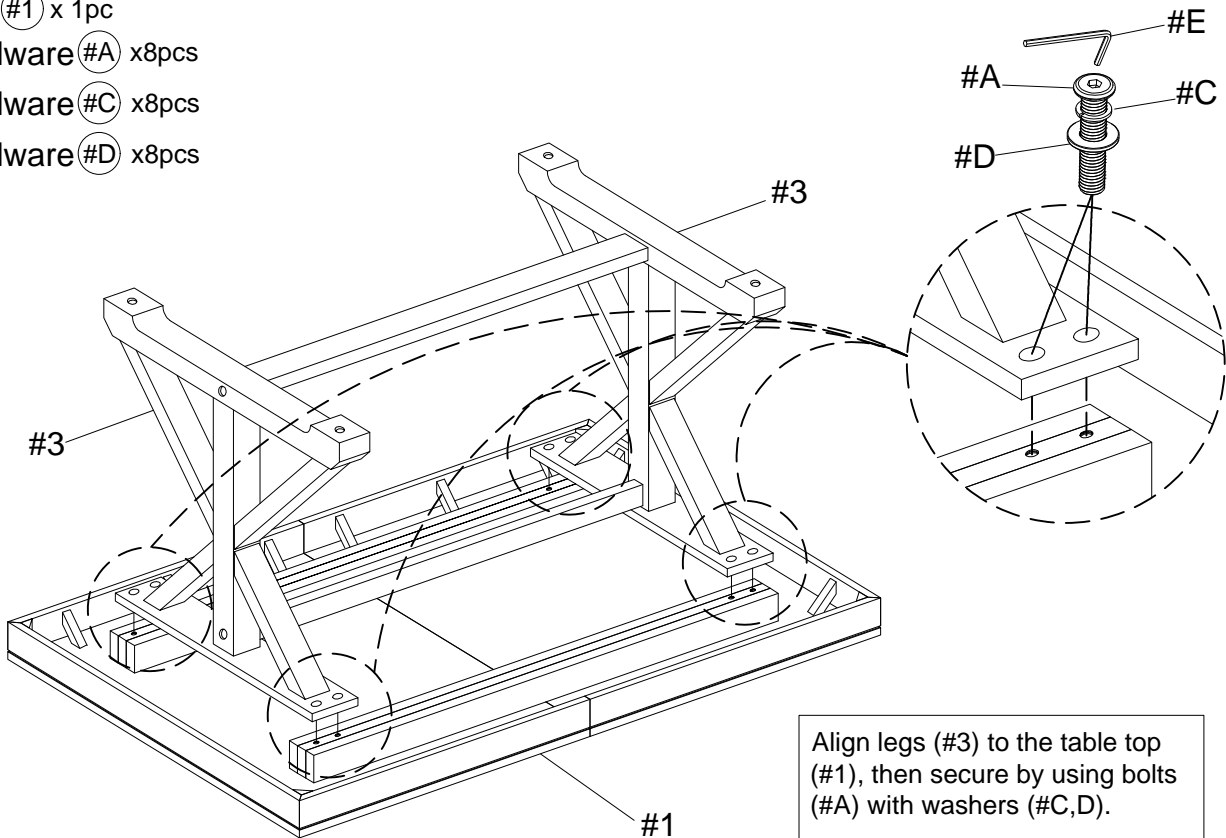
1

- Part #3 x 2pcs
- Part #4 x 1pc
- Part #5 x 1pc
- Hardware #B x 8pcs
- Hardware #C x 8pcs
- Hardware #D x 8pcs
- Hardware #F x 8pcs



2

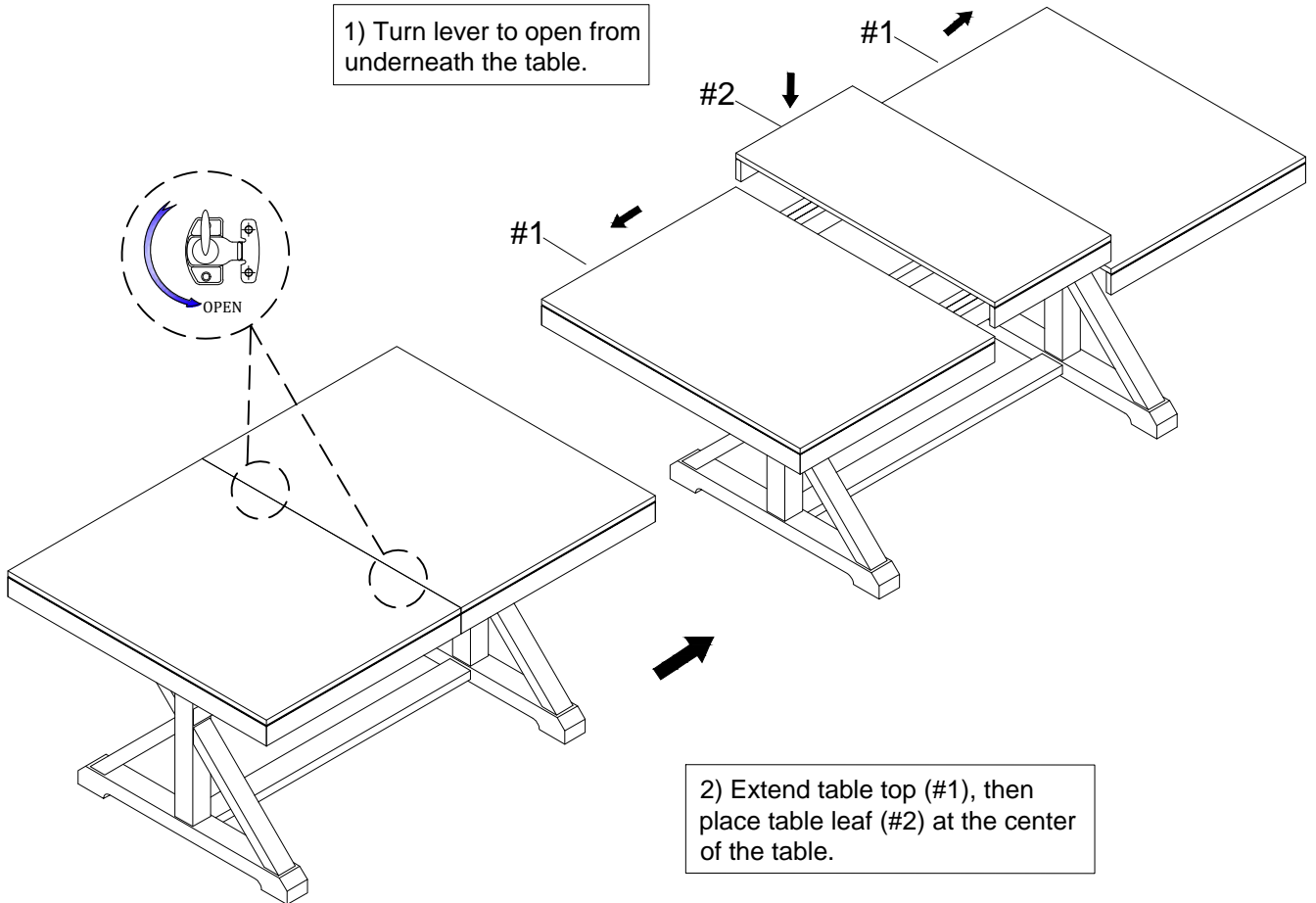
- Part #1 x 1pc
- Hardware #A x 8pcs
- Hardware #C x 8pcs
- Hardware #D x 8pcs



ASSEMBLY INSTRUCTIONS

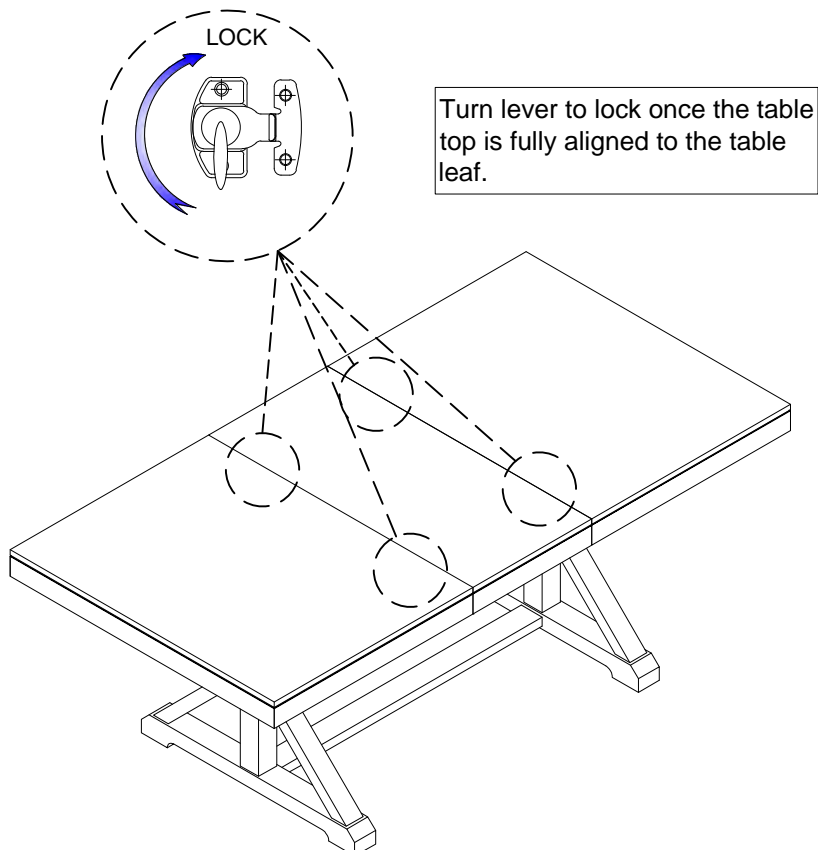
3

1) Turn lever to open from underneath the table.



2) Extend table top (#1), then place table leaf (#2) at the center of the table.

4



ASSEMBLY COMPLETED



Please ensure the furniture rests on an even and flat surface. If the product wobbles or feels loose, double-check all bolts and/or screws are properly tightened and secured.



Keep this handy!

Please retain this instruction manual and any order-related information for future reference.



Lift, don't drag!

To avoid damage to product please always LIFT the product when transporting or adjusting the placement.