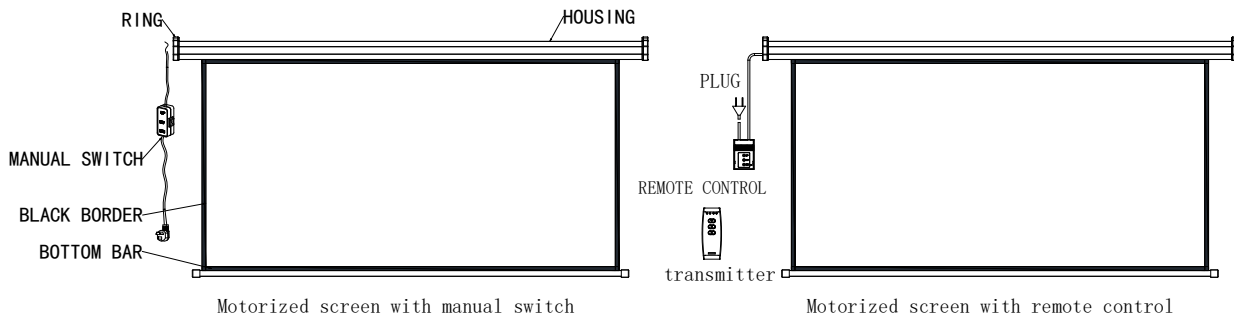


Thank you for choosing our screens

All the screens have passed strict quality inspections before delivery. Read this manual carefully to ensure proper usage.

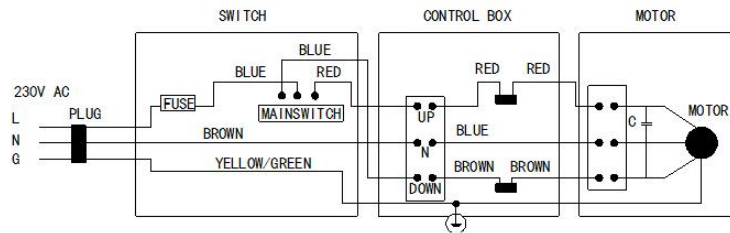
Attention : the installation of the screen is important, the electrical connections, setting of the limit switches, must be conducted by skilled engineers only.

MOTORIZED SCREEN

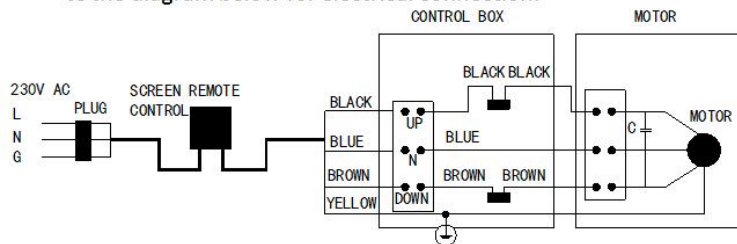


1. CIRCUIT DIAGRAMS

If the motorized screen work with manual switch, please refer to the diagram below for electric connection.



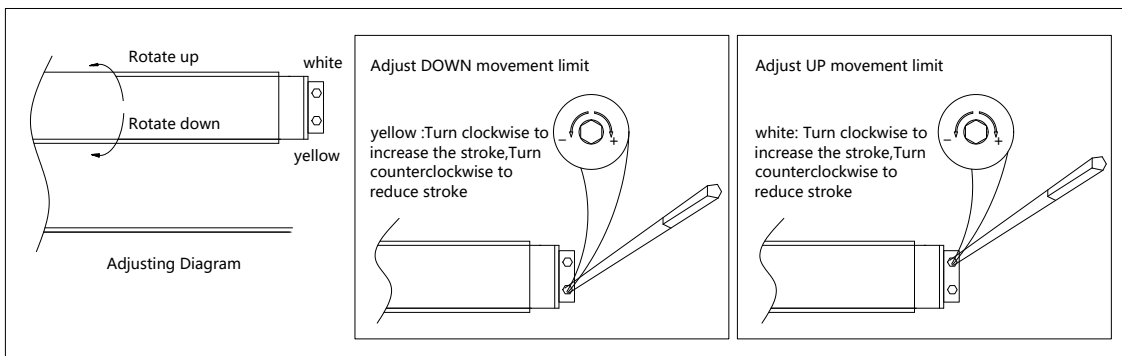
If the motorized screen work with remote control, please refer to the diagram below for electrical connection.



If the remote control does not work well, please check the battery
And replace new one.

2. ADJUST LIMIT SWITCH

Adjust position for the two limit journey, refer to picture below :



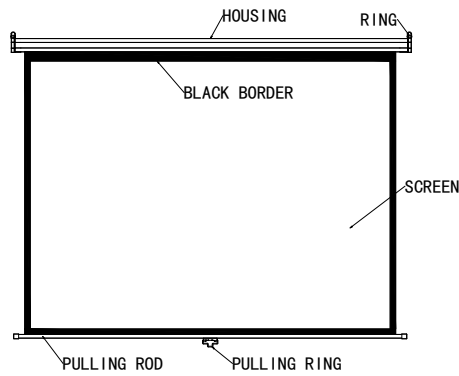
3. USEFUL INSTRUCTIONS

a. The screen should be switched to a suitable power supply, it can be 220V/ 50HZ, 230V/ 50HZ or 110V/ 60HZ, 120V/ 60HZ, but the motor's power must be same as the local voltage and frequency.

b. The screen can be used with or without the remote controller. The remote control system can be radio type or infrared type. Normally if a remote control system is needed, a radio remote controller is supplied but an infrared type controller is also available for a special requirement. These two different controlling functions cannot be combined in one control system.

c. Normally a synchronized motor is installed inside the housing but a tubular motor is also available for a special requirement.

d. If the remote control system is not accompanied, the screen can be operated by the control box directly. Just push the UP/ DOWN /STOP button on the control box to operate the screen. Alternatively, the screen can be operated by the remote controller.



WALL-MOUNTED MANUAL SCREEN

1. STRUCTURE
2. INSTALLING

Moving Parts of the drive must be installed higher than 25 mm above the floor. Choose a suitable place for installation. It is best to install two screws on the wall, the distance of the screws must be equal to that of the two rings and they should be at the same level. The rings must be strong enough to load more than 25kg of weight.

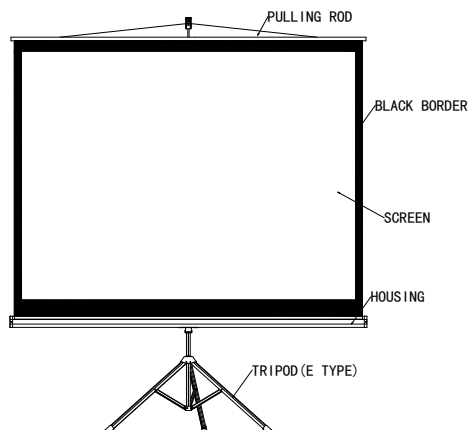
3. USEFUL INSTRUCTIONS

Hold the pulling ring tightly and pull down the screen slowly, then stop when the top black border comes out (or stop pulling whenever you want to stop), the screen can be auto-fixed. If it cannot be fixed, please operate it again according to the same method. After using, pull the screen down a little and it will go up and back into the housing.

4. WARNINGS

- a. The screen cannot be folded. Do not use fingers or hard objects to touch the screen surface. Do not splash milk, fruit juice or other chemical doses to the screen surface. Keep the screen far away from high temperature objects or fire.
- b. If the screen is dirty, wash it gently with a clean cloth or a cotton ball. Do not use organic solvents to clean the screen surface.
- c. When pulling the screen down, it must be done slowly and vertically. Do not pull it roughly. Stop pulling as soon as the black border is out or when the screen is jammed. Send the screen to the service center if the jammed is permanent.
- d. After using, retract the screen back to the housing in order to prevent dirt. If not using it for a long time, please remove the screen from the wall and pack it in a carton.

TRIPOD SCREEN



1. INSTALLING

Choose a suitable place for installing, open the tripod feet first, pull out the upper bar to a suitable height and lock it. Hang the pulling rod above to the goose neck and adjust the screen height, then finally fix/lock it at the position which you want. After using, release the screen and put it back to the housing.

2. USEFUL INSTRUCTIONS

The tripod legs should be placed steady.

When adjusting the height of screen, move the upper bar slowly and carefully.

3. WARNINGS

- a. The screen cannot be folded. Do not use fingers or hard objects to touch the screen surface. Do not splash the milk, fruit juice or other chemical doses to the screen surface. Keep the screen far away from high temperature objects or fire.
- b. If the screen is dirty, wash it gently with a clean cloth or a cotton ball. Do not use the organic solvents to clean the screen surface.
- c. When pulling the screen down, it must be done slowly and vertically. Do not pull it roughly. Stop pulling as soon as the black border is out or when the screen is jammed. Send the screen to the service center if the jammed is permanent.
- d. After using, retract the screen back to the housing in order to prevent dirt. If not using it for a long time, please remove the screen from the wall and pack it in a carton.