

## Forno Countertop Sphere Ice Machine

**MODEL :**  
**FIMFS7352-11S**  
**FIMFS7352-11BLK**



IFORMS TO UL STD. 60335-1 & 60335-2-24  
IFORME AUX NORMES UL. STD. 60335-1 & 60335-2-24  
TIFIED TO CSA STD. C22.2 No. 60335-1 & 60335-2-24  
IFORME AUX NORMES C22.2 NO.60335-1 & 60335-2-24

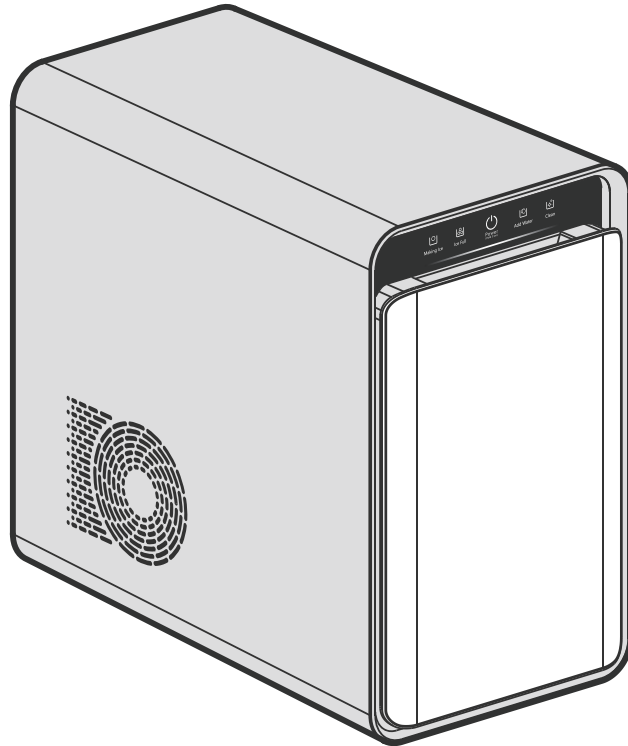
# INSTRUCTION MANUAL

Read these instructions carefully before using your appliance, and keep it carefully.  
If you follow the instructions, your appliance will provide you with many years of good service.

## TABLE OF CONTENTS

Customer Care	4
Warning	5
Important Safety	7
Product Dimension	8
Name of Parts and Accessories	9
Operating Instruction	11
Installation	13
Cleaning and Maintenance	14
Troubleshooting	16
Warranty	17
Circuit diagram	18
Specifications	18

## Forno Countertop Sphere Ice Machine



**MODEL :**  
**FIMFS7352-11S**  
**FIMFS7352-11BLK**

## Customer Care

Thank you for purchasing a Forno product. Please read the entire instruction manual before operating your new appliance for the first time. Whether you are an occasional user or an expert, it will be beneficial to familiarize yourself with the safety practices, features, operation and care recommendations of your appliance.

Both the model and serial number are listed inside the product. For warranty purposes, you will also need the date of purchase .

Record this information below for future reference.

### Product Information

Model Number : \_\_\_\_\_

Serial Number :

Date of Purchase : \_\_\_\_\_

Purchase Address And Phone : \_\_\_\_\_

### Service Information

Use these numbers in any correspondence or services calls concerning your product.

If you received a damaged product, immediately contact Forno.

To save time and money, before you call for serviced, check the troubleshooting guide. It listed the causes of minor operation problems that you can correct yourself.



*“Need some quick help? Simply scan the qr code and get access to our fast support form. We’re always here to assist you with any questions or concerns you may have. So, don’t hesitate to reach out!”*

### Services in Canada and Untied States

Keep the instruction manual handy to answer your questions. If you don’t understand something or need more assistance, please visit our website for fast support. Please provide us your name, number, address,serial number of the product that troubleshooting, proof of purchase, and a short description of the issue. A customer service representative will contact you as soon as possible. All warranty work needs to be authorized by FORNO customer service. All our authorized service

providers are carefully selected and rigorously trained by us.



## **WARNING** FOR YOUR SAFETY

Your safety and the safety of others are very important.

We have provided many important safety messages in this manual and on your appliance. Always read and obey all safety messages.



This is the safety alert symbol. This symbol alerts you to potential hazards that can kill or hurt you and others. All safety messages will follow the safety alert symbol and either the word “DANGER,” “WARNING” or “CAUTION.” These words mean:



- You can be killed or seriously injured if you don't **immediately** follow instructions.



- You can be killed or seriously injured if you don't follow instructions.



- A potentially hazardous situation which, if not avoided, could result in minor or moderate injury.

All safety messages will tell you what the potential hazard is, tell you how to reduce the chance of injury, and tell you what can happen if the instructions are not followed.



**WARNING** : This product can expose you to chemicals including [Lead, lead and lead compound, which is [are] known to the state of California to cause cancer and birth defects or other reproductive harm. For more information go to [www.P65Warning.ca.gov](http://www.P65Warning.ca.gov).



**WARNING**  
FOR YOUR SAFETY

This chapter provides you with important safety notices when handling the device.

The device corresponds with the required safety regulations. Improper use can result in personal or property damages.

Please read the information contained herein so that you can become familiar with your device quickly and take advantage of the full scope of its functions.



**WARNING**

A warning notice of this level of danger indicates a possible dangerous situation.

If the dangerous situation is not avoided, this can lead to serious injuries.

► Observe the instructions in this warning notice in order to avoid the personal injuries.



**WARNING**

A warning notice of this level of danger indicates a possible dangerous situation.

If the dangerous situation is not avoided, this can lead to slight or moderate injuries.

► Observe the instructions in this warning notice in order to avoid the personal injuries.

**PLEASE NOTE**

A notice of this kind indicates additional information, which will simplify the handling of the machine

1. The earth wire has been connected to the power plug, please do not alter the power plug without authorization. It must use a reliable power outlet when connecting the power supply.
2. Do not put the power socket and other equipment on the top of the unit, do not put packaging and any combustible around the unit, so as to avoid accidental fire.
3. Do not operate this device if its power cable or plug is damaged, if it does not work properly or if it is damaged or has been dropped. If the power cable is damaged, it will need to be replaced by the manufacturer or his service agency or a similar qualified person, to avoid any dangers.
4. Do not open the housing on the device under any circumstances. There is a danger of an electrical shock if live connections are touched and the electrical or mechanical structure is altered. In addition, functional faults on the device can also occur.
5. The equipment must be maintained by professional maintenance personnel, there is no repair parts inside the unit.
6. Used product need to be recycled by specialized companies, do not arbitrarily discarded. The door and shelf need to be disassembled before discard.

## Important Safety Instructions

---

- This appliance couldn't share a socket with other appliance, otherwise, it is easy to cause short circuit or damage the electronic components.
- Do not squeeze the power plug, it will cause fire or electric shock if it is damage.
- Ensure the grounding wires connect correctly. If ignore this, it will has the possibility to cause the receiving an electric shock accident or equipment failure.
- Do not damage, prick, twisting, stretching the power cord, it may result in fire or electric leakage if the power cord is damaged.
- Cannot lengthen the power cord without authorization, otherwise, it is easy to cause short circuit or damage the electronic components.
- Before changing the inner light, turn off the appliance first and then unplug the unit from the wall outlet.
- Check the plug whether has dust or foreign matter, then, plug in firmly.
- Clean the dust on the plug regularly to reduce the possibility of fire.
- Before cleaning, switch the device off, remove the plug from the wall socket and keep the hand dry.
- Do not put the foreign matter into the compressor room cover, otherwise, this can lead to electric shock or other injuries.

### WARNING

The equipment must be maintained by professional maintenance personnel, otherwise, it may cause injury, electric shock or fire and will loss of warranty.

Do not climb the cabinet, other wise, the equipment will overturned, especially keep it away from children.

### WARNING

Do not place heavy objects on the top of the cabinet, or they may fall off when the device is opened and causing injury.

Never use the device to store flammable materials, such as benzene, ether, alcohol. Otherwise, there could be an explosion.

Do not store the objects which is sensitive to temperature changes, such as medications or chemicals, otherwise, deterioration or accident may occur.

Do not put vases, glassware or any container with liquid on the top of equipment, it might cause electrical leakage or other damage when the liquid splashed on electronics.

Do not use flammable sprays around the equipment. Sparks from electrical or control circuits may cause a fire or explosion.

Do not pour the liquid directly onto the device when cleaning. Liquid can cause the equipment short circuit or electricity leakage, even fire.

Keep the equipment away from the open flame and high temperature place.

The equipment is only allowed to be used as household appliances and cannot withstand harsh conditions and can't install on recreational vehicles or ships.

This product contains a small amount of isobutene (R600a), which is a combustible gas that can work in a variety of environments. Do not destroy any components of the cooling circuit during transportation and installation of the machine.

The refrigerant spewing out of the pipe can burn or cause eye damage. If leaks are found, eliminate open fires or potential sources, and ventilate the room in which the unit is located.

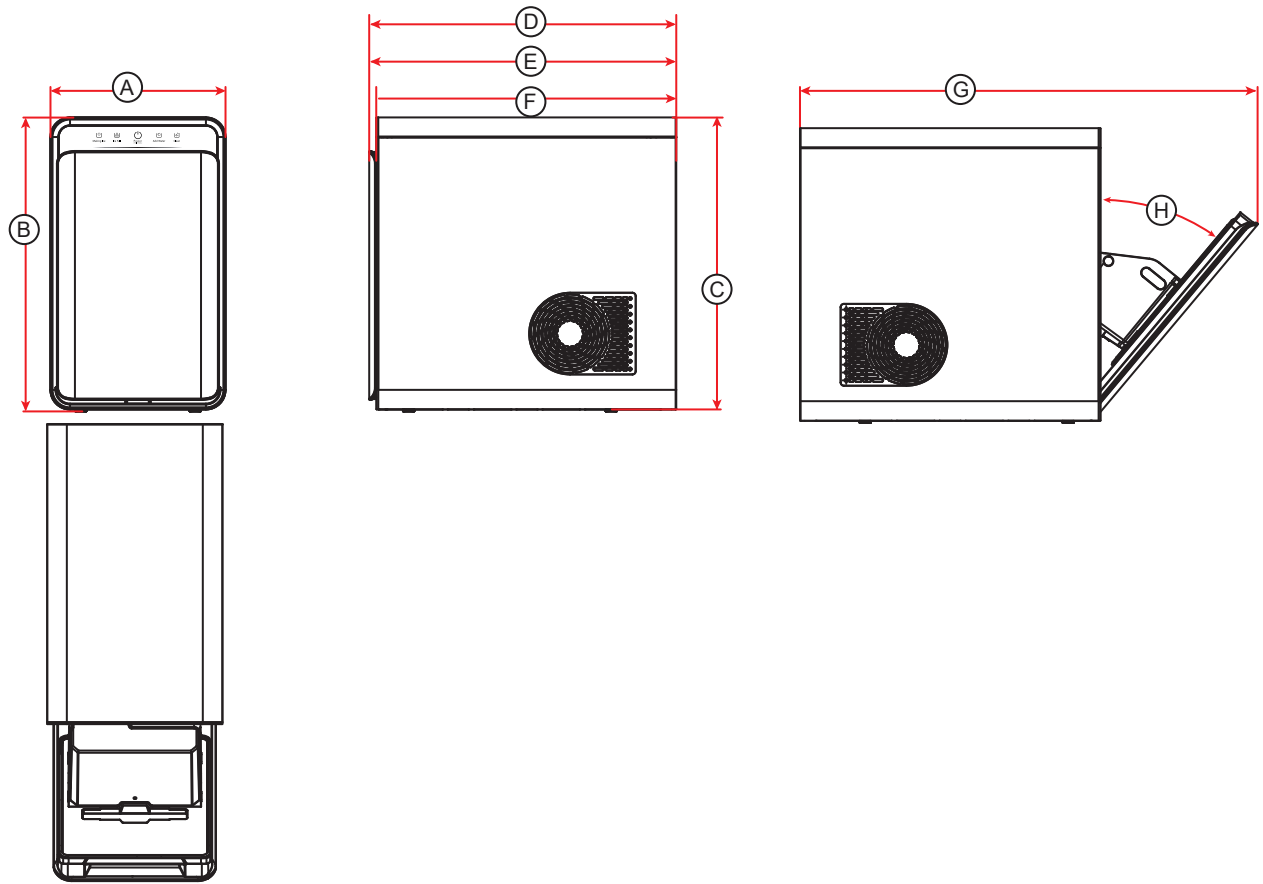
To prevent the formation of flammable gas mixtures in the event of a cooling loop leak, the size of room which place the equipment should be determined according to the amount of refrigerant.

Each 8g of R600a refrigerant need one square meter of space. The amount of refrigerant can be checked on the rating label. Do not start the machine when the product has any signs of damage. Any questions, please consult your dealer.

### ATTENTION

- Grasp plug and pull out from the socket when pull out the power plug, never pull the power cord.
- If you do not use the equipment for a fairly long period of time, you should pull out the plug ,clean the equipment thoroughly and keep the door open for 48 hours.
- Do not operate this device if its power cable or plug is damaged, if it does not work properly or if it is damaged or has been dropped. If the power cable is damaged, it will need to be replaced by the manufacturer or his service agency or a similar qualified person, to avoid any dangers.
- Do not place the equipment where it can collide with furniture or other objects.
- Do not put your hand to the metal base which is under the equipment, otherwise, the sharp edges on the metal base may cause harm to you.
- Transport, unpack and use two or four persons to set down the device because of the heavy weight of the device. Be sure to move the equipment vertically.

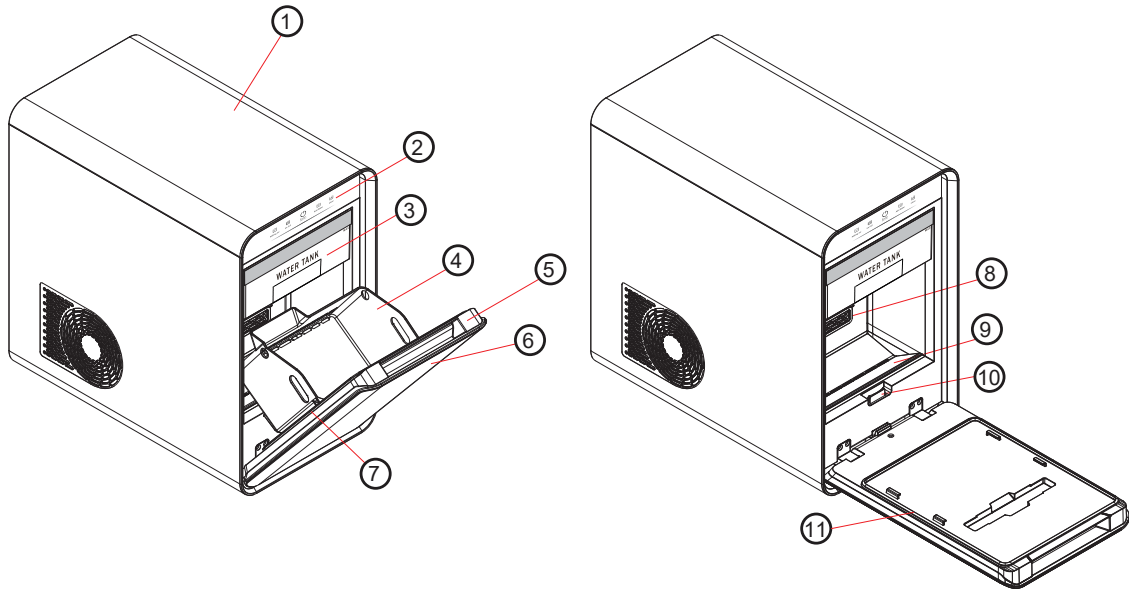
# Product Dimension



A	B	C	D	E
Overall Width	Overall Height Hinge to Foot (on maximum)	Height Top to Bottom	Overall Depth Handle to Back	Depth Door to Back
10.55"	17.72"	17.60"	18.50"	18.50"
-	-	-	-	-

F	G	H	-	-
Depth Front Frame to Back	Depth with Door Fully Open	Opening	-	-
18.13"	27.53"	40°	-	-
-	-	-	-	-

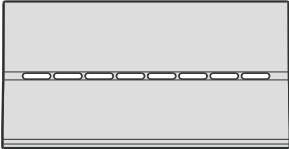
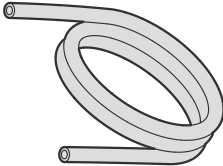
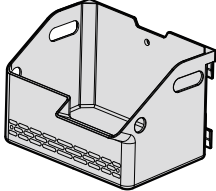
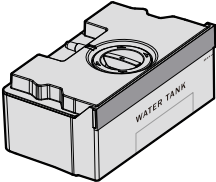
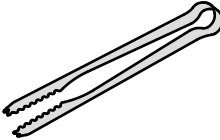
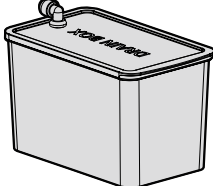
## Names of Parts and Accessories



1	Housing
2	Display panel
3	Water tank
4	Ice storage basket
5	Door housing
6	Door

7	Door housing
8	Air duct
9	Water box cover
10	Door stop
11	Door seal

### Supplied Parts

 <p>1x Water box cover</p>	 <p>1x Drain pipe</p>	 <p>1x Ice storage basket</p>
 <p>1x Water tank</p>	 <p>1x Ice tong</p>	 <p>1x Drain box</p>

---

## Electrical connection

In order to ensure the safe and trouble-free operation of the device, the following instructions must be observed for the electrical connection:

- Before connecting the device, compare the connection data (voltage and frequency) on the rating plate with those of your electrical network. This data must agree in order that no damages occur in the device. If in doubt, ask your qualified electrician.
- The connection between the device and the electrical network may employ a 3 meter long (max.) extension cable with a cross-section of 1.5 mm<sup>2</sup>. The use of multiple plugs or gangs is prohibited because of the danger of fire that is involved with this.
- Make sure that the power cable is undamaged and has not been installed under or over hot or sharp surfaces.
- This unit is not designed to be installed in an RV or used with an inverter.
- The electrical outlet must be protected by a 16A safety cut-out switch.
- The electrical safety of the device is only guaranteed if the device is connected to a properly installed protective conductor system. If in doubt, have the house installation checked over by a qualified electrician. The manufacturer cannot be made responsible for damages that are caused by a missing or damaged protective conductor.

## Ground connection

The wire must be grounded to avoid electric shock.

Connect a socket which is connected to a grounded wire

- \* If the socket has been connected ground wire correctly, then, no need to connect another grounded wire

Connect a socket which isn't connected to a grounded wire

- \* If the socket doesn't connect ground wire, you can connect to the buried copper connection on the ground.

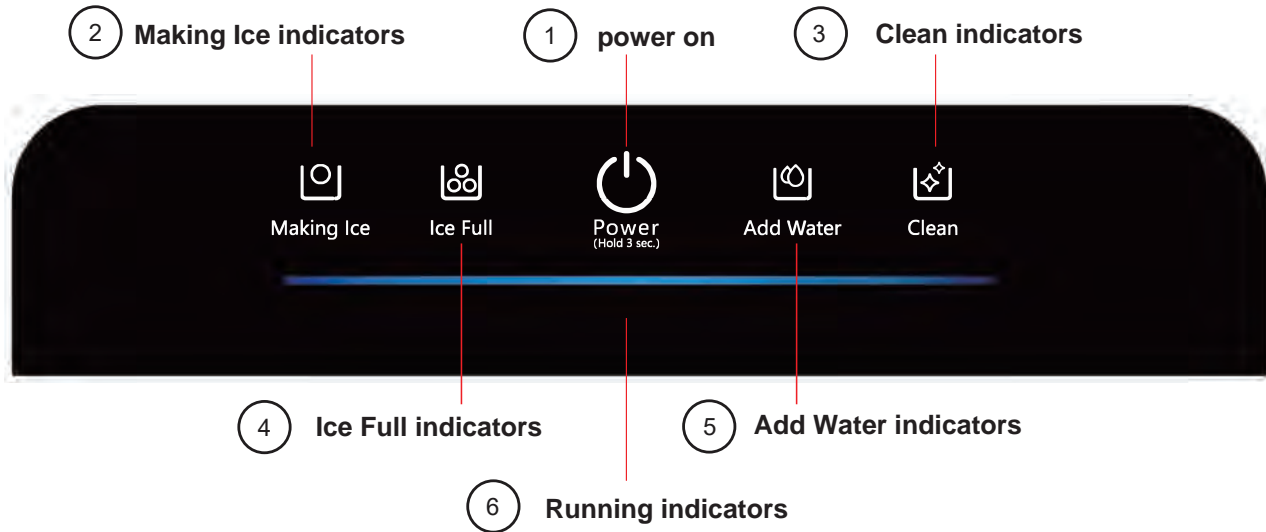
Unable to connect ground position

- \*If the location cannot connect the ground, connect the equipment to the leakage protection switch (the rated current can be checked on the rating label), then, connect to the socket.

## Operating Instructions

This chapter provides you with important notices with regard to operating the device.

### Operating elements and displays:



① Power on/off: Press and hold for three seconds and the four indicators will light up. The ice maker is now in the power-on state. When in power-on state, press and hold for three seconds and the ice maker will shut down.

② Making Ice indicators: Lights up stays on when the machine is making ice

③ Ice Full indicators: Lights up and stays on when the ice storage basket is full and ice making process will be stopped.

④ Add Water indicators: Flash and accompanied by an alarm indicates the water tank ran out of water. Please add water to the ice maker in time.

⑤ Clean indicators: Flash when the unit is in self-cleaning stage of shutdown process. The indicator will stop flashing and continue shutdown process after the cleaning process is complete.

⑥ Blue Running indicators:

Stays On: The Ice Maker is in Ice Making Process

---

Flashes with Making Ice indicator: The Ice Maker is discharging ice balls. Do not open the door until the Making Ice indicator stop flashing.

---

Flashes with Clean indicator: In shutdown process. The Ice Maker will turn off after self-cleaning and shutdown process are completely. It may take up to 10 mins. Please do not cut off the power supply at this time.

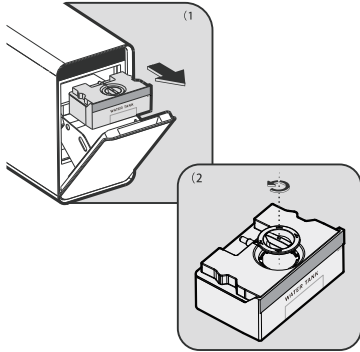
## Operating Instructions (continued)

---

### ICE MAKING OPERATION

① **⚠ WARNING** Before start making ice, please make sure the ice maker is leveled by adjusting four adjustable feet at the bottom of the unit. Operating the ice maker on an uneven surface will affect the size and shape of the ice balls! Let the ice maker upright for at least 4 hours before plugging into power outlet to start making ice.

② Connect the ice maker's power supply to three-prong socket with a grounding wire.



(1) For first time use or when the Add water indicator is flashing, open the door and pull out the water tank.

③ (2) Open the lid on top of the water tank and fill water to the MAX line mark. Close the lid and insert the water tank back into the ice maker.

④ Press the Power on/off and hold for three seconds to start the ice maker.

⑤ Although the ice maker was carefully cleaned before packing and shipping, it is recommended **not to use the first four** ice balls when using the ice maker for the first time or after a long period of time.

⑥ The ice maker makes 2 ice balls per batch. The ice-making cycle is approximately 2 hours for the first batch. After the first batch, depending on the water and ambient temperature, the cycle time will reduce down to 1~1.5 hours/batch.

⑦ The ice maker will stop ice making process and switch to standby when Ice Full or Add Water indicator light up. It will resume ice making process automatically when Ice Full or Add Water condition is eliminated.

⑧ To turn off the ice maker, press and hold the Power on/off for three seconds or until you hear a beep sound. The Ice Maker will run self-cleaning and shut-down processes for up to 10 mins and then turn off automatically.

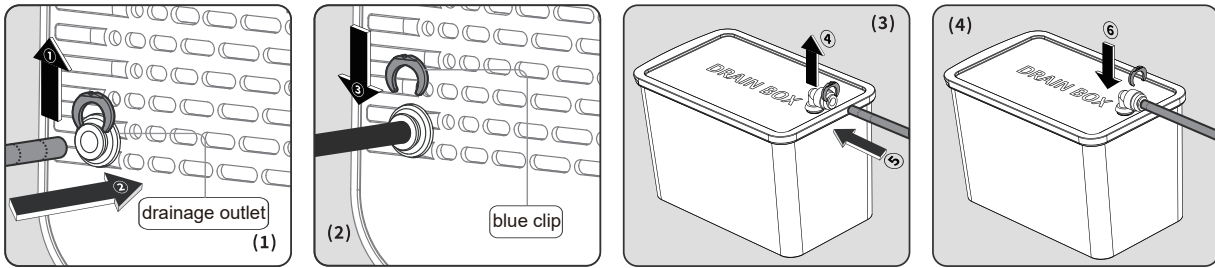
**NOTE:** The shape and clarity of the ice ball will reach its designed condition after the first or second batch. It is normal to have cloudy ice balls from the first few batches.

Ice making time and ice ball clarity are also affected by ambient temperature, door opening times and water quality. It is recommended to use water filtered by RO reverse osmosis membrane for the best clarity or purified water for best results.

**Warning:** Change the water in the water tank every 24 hours to ensure a good hygiene level. If you do not plan on using the ice maker in the next 24 hours, drain out all the water & dry the water tank.

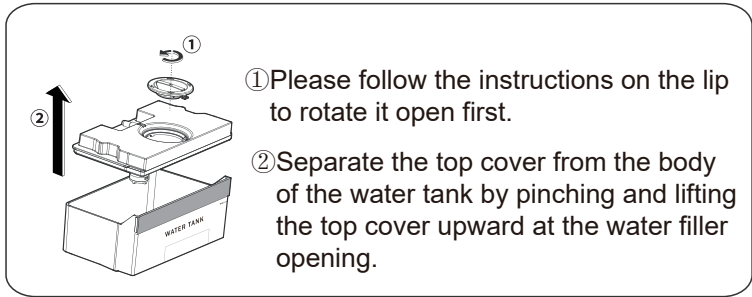
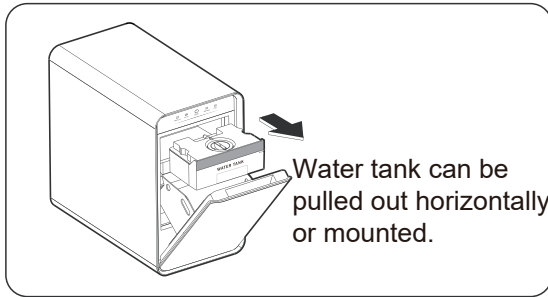
# Installation

## Drainage Outlet, Drainage Box

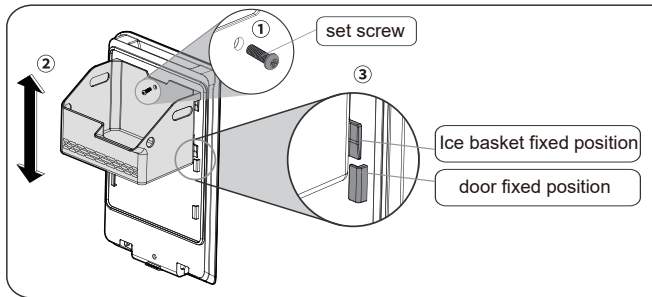


- ① The drainage outlet is located on the lower left side of the ice maker's rear back panel, pull the blue clip on the outlet upwards
- ② Insert the end of the drain pipe firmly into the drain outlet between the two marked lines and the installation is in place.
- ③ Reinsert the blue clip back into the drain outlet connector slot;
- ④ Pull the blue clip on the drain box connector upwards;
- ⑤ The other end of the drain pipe is cut to a suitable length(optional), the mouth of the pipe is cut flat and inserted into the connector with force, the insertion length is more than 2cm, the drain pipe should not be bent or higher than the connector of the drainage box.
- ⑥ Reinsert the blue clip back into the drainage box connector slot.

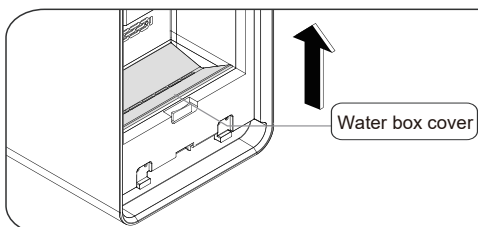
## Installation of water tank



## Installation of ice basket



## Installation of bottom water box cover



Place the cover over the water box.  
Hold the cover upwards to clean.

## Cleaning and Maintenance

Clean the ice maker before using it for the first time or after a long period of time. It is recommended to have regular cleaning and maintenance according to the local water quality and actual use. Use solvent-based cleaning agents to clean, otherwise, it may cause damage or harmful substance residues; do not rinse the ice maker with water, please use a damp cloth to wipe the inside and outside.

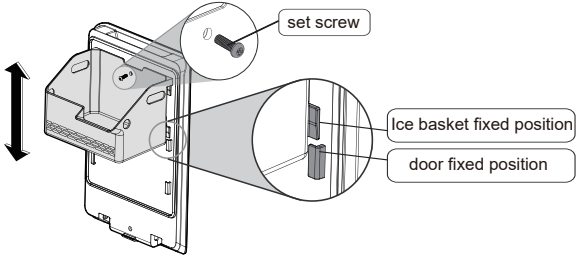
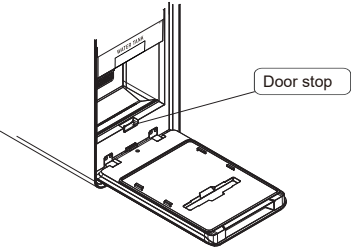
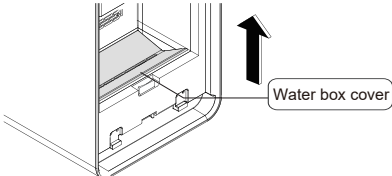
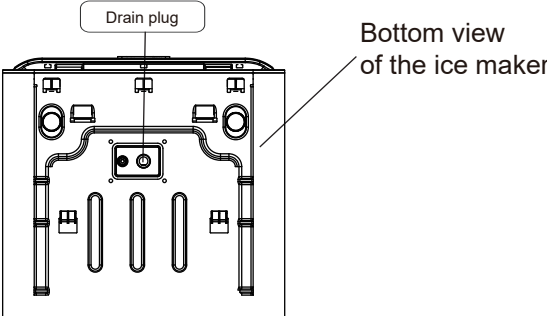
### REGULAR MAINTENANCE.

It is recommended to deeply clean your ice maker once every 9 months, or more frequently if you live in an area with hard water or high humidity.

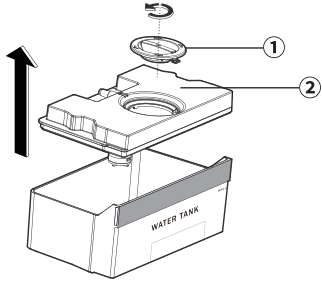
Follow these cleaning instructions to make sure your ice maker is clear of mineral deposits and the longevity of your icemaker is maintained..

For disinfectant, use water and vinegar, or citric acid (10:1 ratio).

### Instructions.

Always turn the ice maker off and disconnect the power supply before cleaning.	
	<p>(1) Remove the screw on the ice storage basket and lift up to remove.</p> <p>(2) Please align the respective fixing position on both the basket and the door and slide it down to install.</p>
	<p>(3) Remove the ice basket to reveal the Door Stop. Push the Door Stop to open the door by 90° for easy cleaning.</p>
	<p>(4) Remove the water box cover to clean the water box. Clean it with a soft damp cloth and put the cover back when finished.</p>
	<p>(5) Empty excess water inside the internal water tank through the drain hole located at the bottom front of the ice maker</p> <p>(6) Keep the Ice Maker in the upright position. Place the water bucket below the drain hole or place the icemaker over a sink drain and unplug the drain plug.</p>

## Cleaning and Maintenance

	<p>(7)Cleaning Water Tank</p> <ol style="list-style-type: none"><li>1. Remove the lid</li><li>2. Pinch the sides of the tank to open the upper cover.</li><li>3. Simply wipe it with soft damp cloth.</li></ol>
<p>Fill the water tank with drinking water, connect the power, turn on the ice maker to make ice, toss the first four ice balls and enjoy the subsequent ice balls.</p>	

If the ice maker has not been cleaned for a long time, or if you feel that there is an odor of the ice ball or ice maker, please also follow the steps above to clean.

### SOUND DURING OPERATION.

The following sounds during operation are normal

- A gurgling sound of refrigerant flow may be heard during each cycle.
- The sound of the ice ball dropping into the ice storage basket will be heard after each ice making.
- The sound of cooling fans turning on both sides of the ice maker will be heard.
- If the door is accidentally opened when ice ball is coming out, then you will hear the knocking sound of the ice ball falling to the water box cover, in this case, the door cannot be closed, please take down the ice storage basket, and take out the ice ball that falls on the cover.
- The sound of the compressor during operation may be heard.
- In low temperature environment, due to the fast-freezing speed, the DD transparent device may be frozen, and resulting in 2 to 3 abnormal sounds over a period of time. Don't worry and no operation is needed, as the ice maker will start the protection program and automatically restore the ice making after a period of time.
- The Ice Maker will continue running for 1~10 minutes after long press the power off to shut down the machine. The sound of the ice maker operation can still be heard at this time, please do not cut off the power.

### DISPOSING YOUR ICE MAKER

Dispose of this ice maker's material in accordance with national regulations

## Troubleshooting

- ▶ The following table assists in localizing and rectifying minor faults.
- ▶ Please contact the service advisory center timely when you check the following items, but the product is still cannot be used normally.

Problem	Possible Causes	Solution
The Ice Maker does not respond when connected to wall outlet	No power on wall outlet	Check wall outlet
	The power cord is damaged	Requires repair or replacement by a professional technician
	Power cord not plugged in securely	Check the power cord connection
The full ice indicator is on, but the ice basket is not full.	Ice Full Sensor is blocked	Requires repair or replacement by a professional technician
	Ice Full Sensor is damaged	Requires repair or replacement by a professional technician
The Add Water indicator is on, but there is still water in the tank	Water tank is not installed properly	Pull the tank out and push it back in
	Water shortage sensor damaged	Requires repair or replacement by a professional technician
	Water pump malfunction	
The Ice Maker is working but does not make ice	Refrigerant leakage	Requires repair or replacement by a professional technician
	Refrigeration pipes Clogged	
	It may be in system protection mode	Unplug the power cord of the Ice Maker, Wait for four hours before plugging it back in. If the Ice Maker still can't make ice after power on please contact Customer service
Water leaking from the bottom of the Ice Maker	Drain plugs are not installed properly.	Check the drain plugs on the back and bottom of the Ice Maker. Make sure they are plug in tightly.
Water dripping under the door of Ice Maker	Condensation is caused by high ambient temperature and humidity. It is normal, please use a soft dry cloth to wipe it clean.	

## Warranty

---

### What this limited warranty covers:

The Warranty coverage provided by Forno Appliances in this statement applies exclusively to the original Forno appliance ("Product") sold to the consumer ("Purchaser") by an authorized Forno dealer/distributor/retailer, purchased and installed in the United States or Canada, and which has always remained within the original country of purchase (the United States or Canada). Warranty coverage is activated on the date of the Product's original retail purchase and has a duration of two (2) years.

Warranty coverage is non-transferable. In the event of replacement of parts or of the entire product, the replacement Product (or parts) shall assume the remaining original Warranty activated with the original retail purchase document. This Warranty shall not be extended with respect to such replacement. Forno Appliances will repair or replace any component/part which fails or proves defective due to materials and/or workmanship within 2 years of the date of the original retail purchase and under conditions of ordinary residential, non-commercial use. Repair or replacement will be free of charge, including labor at standard rates and shipping expenses. Purchaser is responsible for making the Product reasonably accessible for service. Repair service must be performed by a Forno Authorized Service company during normal working hours.

### Important

Retain proof of original purchase to establish warranty period. Forno's liability on any claim of any kind, with respect to the goods and/or services provided, shall in no event exceed the value of the goods or service or part there of which has given rise to the claim.

### 30-Day Cosmetic Warranty

The Purchaser must inspect the product at the time of delivery. Forno warrants that the Product is free from manufacturing defects in materials and workmanship for a period of thirty (30) days from date of the original retail purchase of the Product.

This coverage includes:

- Paint blemishes
- Chips
- Macroscopic finish defects

### Cosmetic warranty does NOT cover:

- Issues resulting from incorrect transport, handling and/or installation (e.g.: dents, broken, warped or deformed structures or components, cracked or otherwise damaged glass components);
- Slight color variations on painted/enamelled components;
- Differences caused by natural or artificial lighting, location or other analogous factors; > stains/corrosion/dicoloration caused by external substances and/or environmental factors; > labor costs, display, floor, B-stock, out- of-box, "as is" appliances and demo units.

### How to receive service

To receive warranty services, the Purchaser must contact the Forno Support department in order to determine the problem and the required service procedures. Troubleshooting with

a customer service representative will be necessary before moving forward with the service. Model number, serial number and date of original retail purchase will be requested.

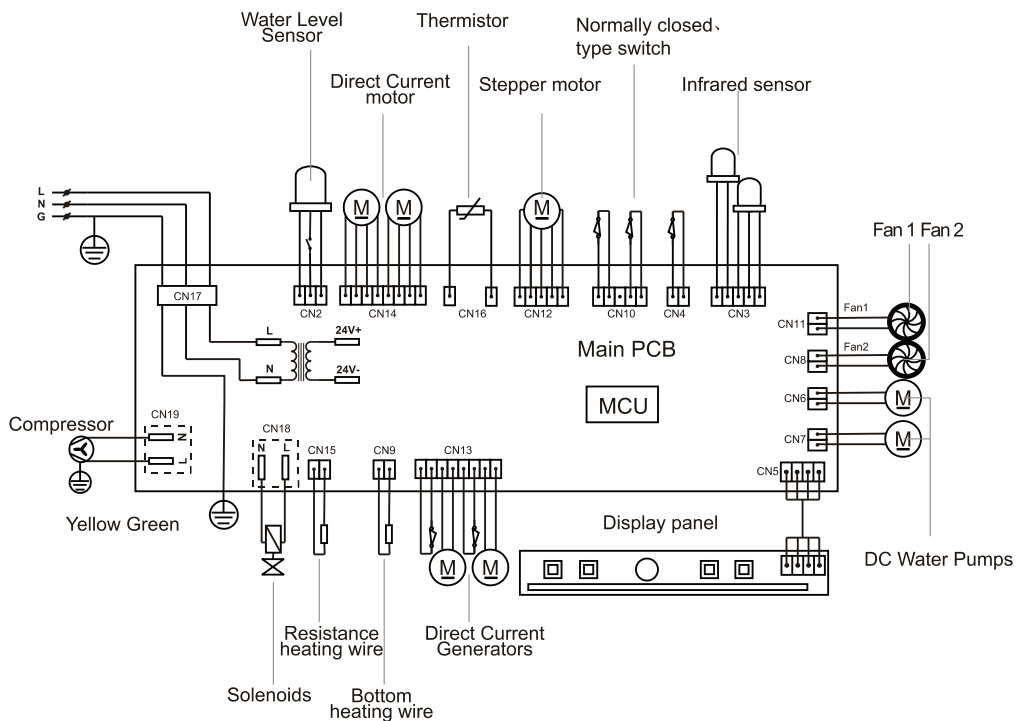
### Warranty Exclusions: What Is Not Covered.

- Use of the Product in any non-residential, commercial application.
- Use of the Product for anything other than its intended purpose.
- Repair services provided by anyone other than a Forno Authorized Service agency.
- Damages or repair services to correct services provided by unauthorized parties or the use of unauthorized parts.
- Installation not in accordance with local/state/city/county fire codes, electrical codes, gas codes, plumbing codes, building codes, laws or regulations.
- Defects or damage due to improper storage of the Product.
- Defects, damage or missing parts on products sold out of the original factory packaging or from displays. > Service calls or repairs to correct an incorrect installation of the Product and/or related accessories.
- Replacement of parts/service calls to connect, convert or otherwise repair the electrical wiring and/or gas line in order to properly use the product.
- Replacement of parts/service calls to provide instructions and information on the use of the Product.
- Replacement of parts/service calls to correct issues arising from the product being used in a manner other than what is normal and customary for residential use.
- Replacement of parts/service calls due to wear and tear of components such as seals, knobs, pan supports, shelving, cutlery baskets, buttons, touch displays, scratched or broken ceramic-glass tops.
- Replacement of parts/service calls for lack of/improper maintenance, including but not limited to: build up of residues, stains, scratches, discoloration, corrosion.
- Defects and damages arising from accidents, alteration, misuse, abuse or improper installation.
- Defects and damages arising from Product transport, logistics and handling. Inspection of the product must be made at time of delivery. Following receipt and inspection, the selling dealer/delivery company must be notified of any issues arising from handling, transport and logistics.
- Defects and damages arising from external forces beyond the control of Forno Appliances, including but not limited to wind, rain, sand, fires, floods, mudslides, freezing temperatures, excessive moisture or extended exposure to humidity, power surges, lightning, structural failures surrounding the appliance and other acts of God.
- Products whose serial number has been altered/damaged/tampered with. In no case shall Forno be held liable or responsible for damage to surrounding property, including furniture, cabinetry, flooring, panels, and other structures surrounding the Product. Forno is neither liable nor responsible for the Product if it is located in a remote area or an area where certified trained technicians are not reasonably available. Purchaser must bear any transportation and delivery costs of the Product to the nearest Authorized Service Center or the additional travel expenses of a certified trained technician

## Warranty (continued)

THERE ARE NO EXPRESS WARRANTIES OTHER THAN THOSE LISTED AND DESCRIBED ABOVE, AND NO WARRANTIES, EITHER EXPRESS OR IMPLIED, INCLUDING, BUT NOT LIMITED TO, ANY IMPLIED WARRANTIES OF MERCHANTABILITY OR FITNESS FOR A PARTICULAR PURPOSE THAT SHALL APPLY AFTER THE EXPRESS WARRANTY PERIODS STATED ABOVE, AND NO OTHER EXPRESS WARRANTY OR GUARANTEE GIVEN BY ANY PERSON, FIRM OR CORPORATION WITH RESPECT TO THIS PRODUCT SHALL BE BINDING ON FORNO. FORNO SHALL NOT BE LIABLE FOR LOSS OF REVENUE OR PROFITS, FAILURE TO REALIZE SAVINGS OR OTHER BENEFITS, TIME AWAY FROM WORK, MEALS, LOSS OF FOOD OR BEVERAGES, TRAVELING OR HOTEL EXPENSES, EXPENSES TO RENT OR PURCHASE APPLIANCES, REMODELING/CONSTRUCTION EXPENSES IN EXCESS OF DIRECT DAMAGES WHICH ARE UNDENIABLY CAUSED EXCLUSIVELY BY FORNO OR ANY OTHER SPECIAL, INCIDENTAL OR CONSEQUENTIAL DAMAGES CAUSED BY THE USE, MISUSE OR INABILITY TO USE THIS PRODUCT, REGARDLESS OF THE LEGAL THEORY ON WHICH THE CLAIM IS BASED, AND EVEN IF FORNO HAS BEEN ADVISED OF THE POSSIBILITY OF SUCH DAMAGES. NOR SHALL RECOVERY OF ANY KIND AGAINST FORNO BE GREATER IN AMOUNT THAN THE PURCHASE PRICE OF THE PRODUCT SOLD BY FORNO AND CAUSING THE ALLEGED DAMAGE. WITHOUT PREJUDICE TO THE FOREGOING, PURCHASER ASSUMES ALL RISK AND LIABILITY FOR LOSS, DAMAGE OR INJURY TO PURCHASER AND PURCHASER'S PROPERTY AND TO OTHERS AND THEIR PROPERTY ARISING FROM THE USE, MISUSE, OR INABILITY TO USE THIS PRODUCT SOLD BY FORNO THAT IS NOT A DIRECT RESULT OF NEGLIGENCE ON THE PART OF FORNO THIS LIMITED WARRANTY SHALL NOT EXTEND TO ANYONE OTHER THAN THE ORIGINAL PURCHASER OF THIS PRODUCT, IS NON-TRANSFERABLE, AND STATES YOUR EXCLUSIVE REMEDY.

## Circuit diagram



## Specifications

1	MODEL NO.	FIMFS7352-11S/FIMFS7352-11BLK
2	ICE TYPE	Spherical Ice
3	RATED VOLTAGE/FREQUENCY	115V~/60Hz
4	RATED CURRENT	1.6A
5	REFRIGERANT	R600a/31g
6	NET WEIGHT	40 lb.



FOR  
**FAST SUPPORT**  
EMAIL AT [INFO@FORNO.CA](mailto:INFO@FORNO.CA) 

Customer Support: Call 1-866-231-8893 or email: [info@forno.ca](mailto:info@forno.ca)