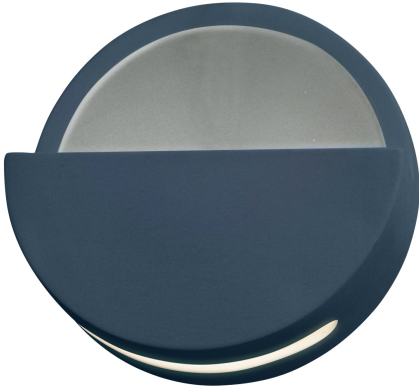


Ceramic ADA Dome LED Wall Sconce (Open Top)



SOLID PAINT COLORS (GROUP 1):



Midnight Sky (MID)

Lamping:



LED

Description :

ADA Dome LED Wall Sconce (Open Top)

Primary Shade Material :

[Ceramic](#)

Frame Style :

[Ambiance](#)

Finish Groups :

[Bisque, 1, 2, 4](#)

UL/ETL Listing :

Suitable for Damp Locations

Feature :

[ADA](#), [Ceramic](#), [Made in USA](#)

Standard LED :

12W 1,000 Initial Lumens

Dimension :

8" Dia. x 3.25" Proj.

Mounting Center :

4.5" Up; 3.5" Down

Notes :

Made in the USA, This item is available in up to 40 hand-painted finishes, as well as unfinished ceramic bisque (BIS) which is paintable, Dedicated LED engine included; Color Temperature = 3000K; Minimum CRI = 90; Dimming is compatible with Incandescent/Triac or ELV dimmers