

12 x 12 FT POP UP INSTANT CANOPY

SKU NO.: #CSGZ1212WHSL

#CSGZ1212TNNV

#CSGZ1212NVSL

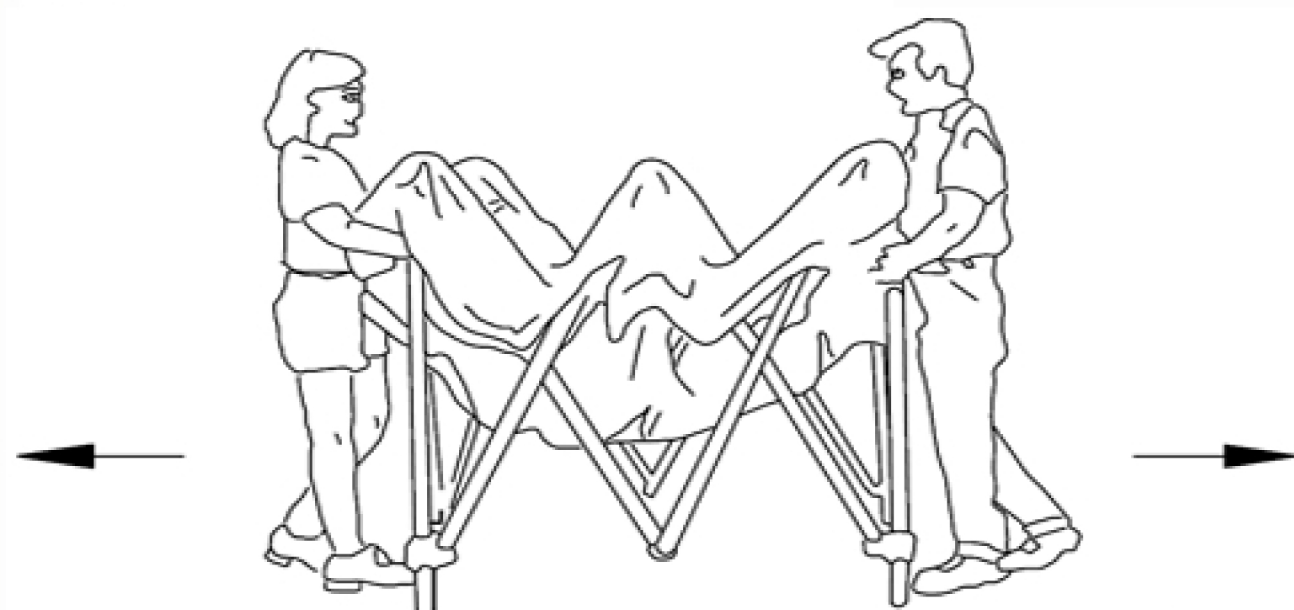
ASSEMBLY INSTRUCTIONS

PARTS LIST

A	B	C	D	E	F
Gazebo	Corner Rib	Ground Stake	Tie-down Cord	Screw Stake	Sand Bag
QTY 1	QTY 4	QTY 4	QTY 4	QTY 4	QTY 4

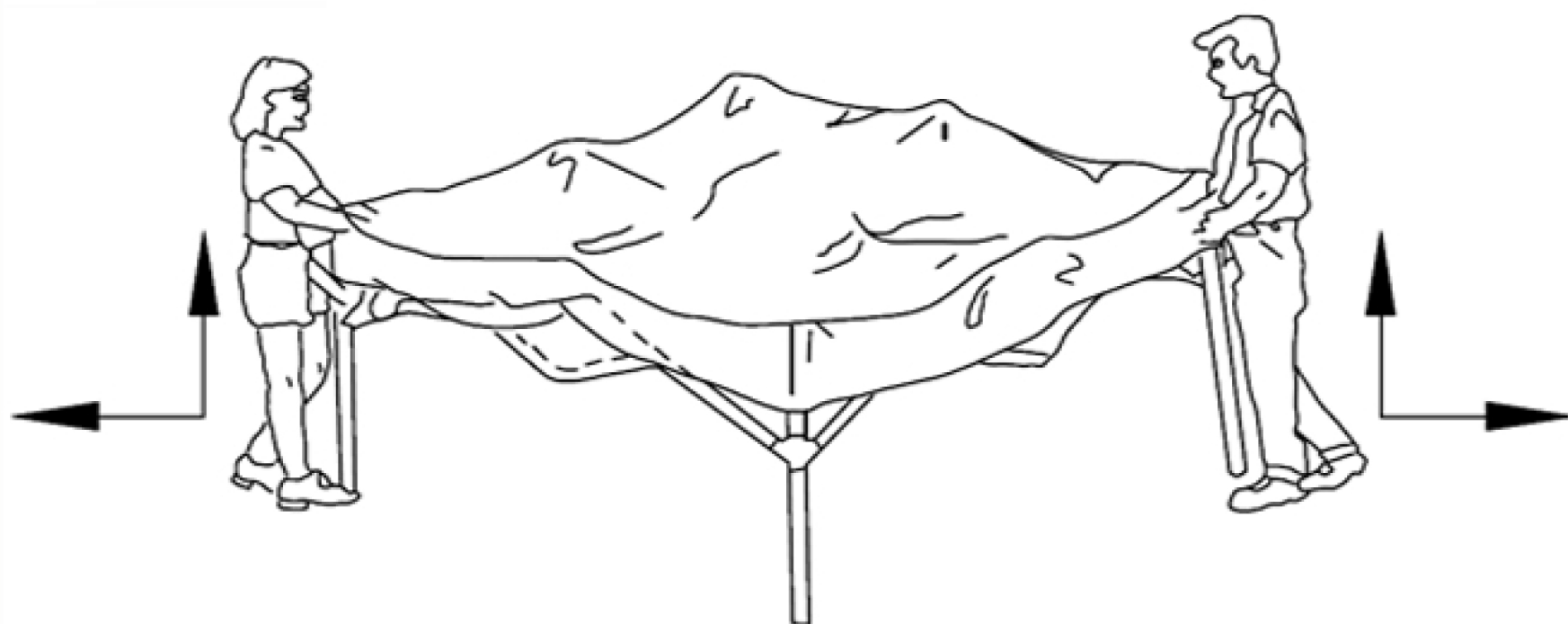
SET UP

STEP 1



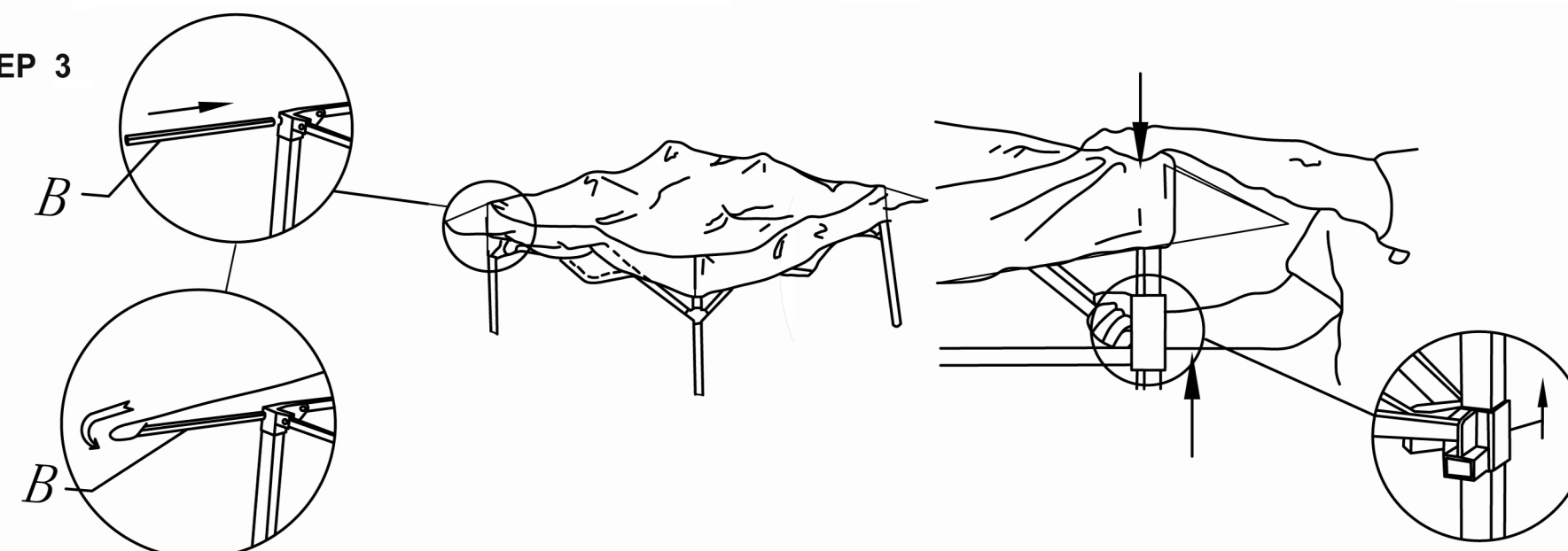
Set the gazebo frame in the center of the set-up area. Grasp the legs on one side while a partner grasps the legs on the opposite side. Working at the same time, pull out on the legs to spread the frame open as far as possible. You may need to step backward carefully to allow room to open the frame.

STEP 2



Secure each corner with the valance on the canopy, make sure the valance to fit well around the top of the leg on the frame.

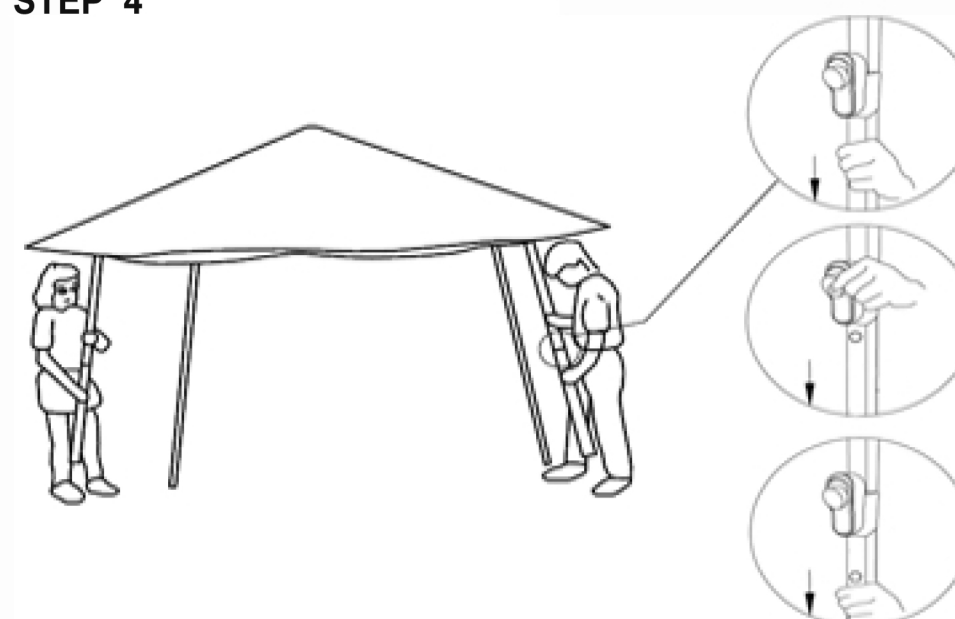
STEP 3



Insert Corner Rib into top corner bracket until the pin pops into place. Pull the fabric corner of canopy to wrap over the rib end. Repeat this process on the remaining corners, so the overhang is formed.

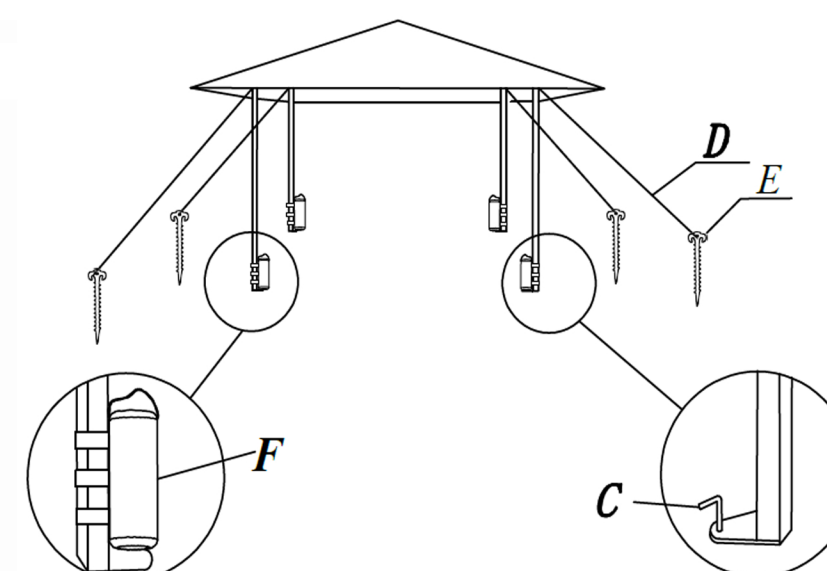
Make sure of frame has been fully spreaded, then hold the corner with one hand while you grab the side cross bar and slide the locking bracket up with the other hand until the locking pin pops into place. Repeat this process on the remaining corners to open the frame completely.

STEP 4



Lift the upper pole with one hand (do not press the snap button), slide out the lower pole with the other hand until it clicks into place. To rise to the second height, continue to slide the pole towards next hole by pressing the snap button, but make sure to release button immediately at the moment the pole moves, keep sliding until it clicks into place again. Repeat same process to slide up or down to reach the desired level, always make sure all 4 legs in the same level.

STEP 5



Attach the Tie-down Cord D to each corner, and tie the other end with the Screw Stake E. Pull the cord tight and screw the Screw Stake E into the ground in depth, working one corner at a time, continue to fix Ground stakes C with foot plate. Place fully filled sand bags and tie each of them to the bottom of lower pole respectively.