

MERCANA

Dawson II
SKU: 65275



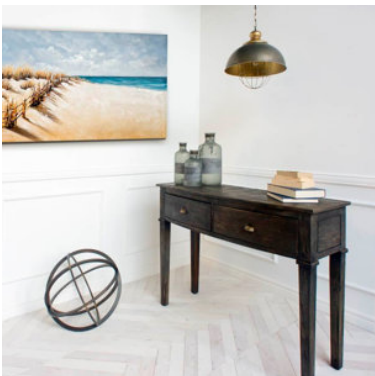
PREMIUM COMPOSITION

The Dawson II is expertly crafted from metal components that ensure sturdiness and stability.



SUPERIOR FINISH

Featuring a rustic-silver tone polish with antiqued-gold accents, the Dawson II is a posh lighting fixture that boasts of a superior polish guaranteed to add a touch of panache to any space and setting.



FARMHOUSE/INDUSTRIAL INSPIRED DESIGN

Designed to be an instant head-turner in farmhouse or industrial spaces, the Dawson II flaunts clean lines and a unique design that is complemented by its radiant finish.

The Dawson II is a stylish, hanging metal light featuring a metal dome with an antiqued-gold cap and bulb cage.



AVAILABLE IN

1 Color

1 Size



Explore Online

MERCANA

Dawson II
SKU: 65275

FEATURES & SPECIFICATIONS

Product Style	Modern Farmhouse, Contemporary, Industrial, American Design, Mid-Century Modern, Glam, Luxe
Bulb Included?	No
Chain/Rod Adjustable?	Yes
Bulb Socket Type	E26
Bulb Max Wattage	60W
Pendant Type	Lantern, Bowl or Inverted

DIMENSIONS & WEIGHT

Length	16.3 inches
Width	16.3 inches
Height	17.0 inches
CBM	0.0736
Weight	7.72 lbs (3.50 kg)
Box Size	16.9L x 16.9W x 16.1H
Box Weight	7.94 lbs (3.60 kg)

MATERIALS & FINISHES

Lighting Shade Material	Metal
Fixture Finish	Gold

ASSEMBLY REQUIREMENT