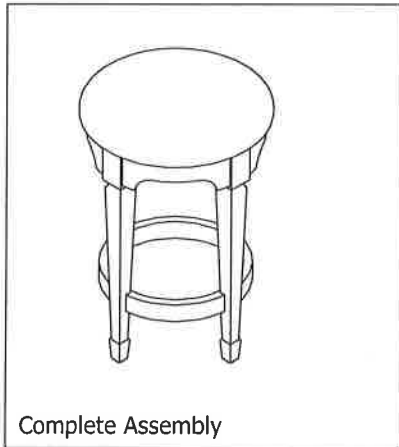


ASSEMBLY INSTRUCTION

DESCRIPTION: Wooden Seat Bar Stool

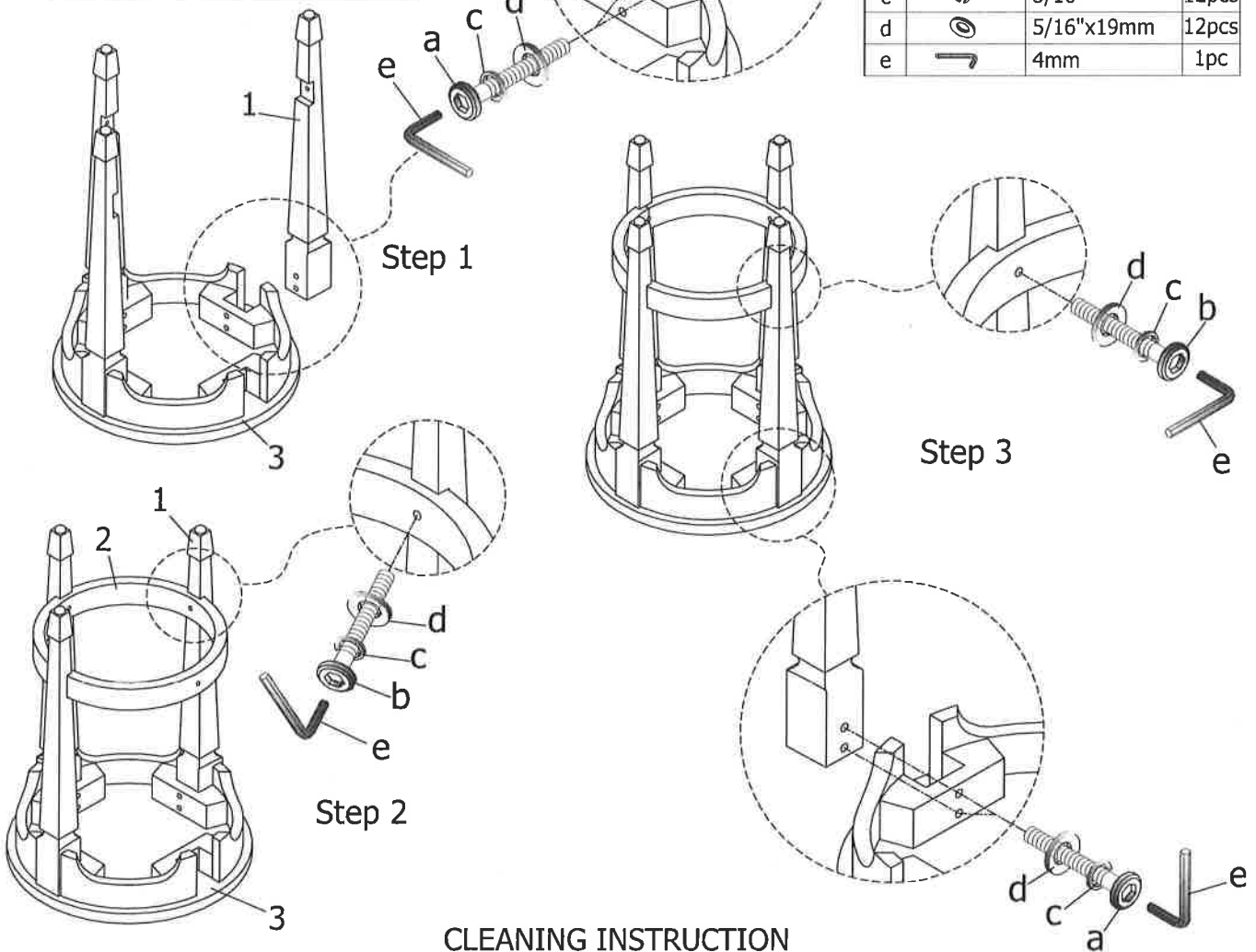
Thank you for purchasing this quality product. Be sure to check all packing materials carefully for small parts which may have come loose inside the carton during shipment. Identify and count all parts and compare with the parts List Below.



DO NOT FULLY TIGHTEN SCREW,
BOLTS UNTIL ALL PARTS COMPLETE
ASSEMBLY

PARTS LIST

NO.	SKETCH	DESCRIPTION	Q'TY
1		Leg	4pcs
2		Lower frame	1pc
3		Seat frame	1pc
4	HARDWARE LIST 1		1bag
NO.	SKETCH	HARDWARE	Q'TY
a		5/16"x18x2-1/4"	8pcs
b		5/16"x18x1-3/8"	4pcs
c		5/16"	12pcs
d		5/16"x19mm	12pcs
e		4mm	1pc



CLEANING INSTRUCTION

Clean the Stool surface with a furniture polish and a soft cloth

MADE IN VIETNAM

Chair Assembly Tips

Having some trouble putting together your new furniture? We can help! The key to correct chair assembly is to loosely attach all of the bolts, then gradually tighten them in succession until all of them are secure. Completely tightening one or more bolts prematurely can result in the following:

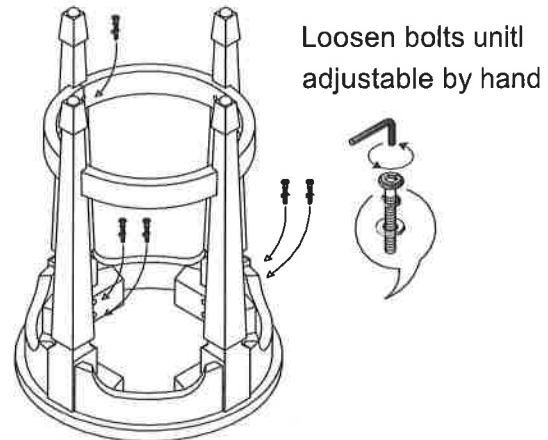
ISSUE: CHAIR IS UNLEVELED

Cause:

. Chairs can be wobbly or unlevelled if one or more bolts are fully tightened before all bolts are attached and/or tightened.

Solution:

. Loosen each bolt in the seat box (front legs, back corner-blocks and back apron) until they're finger tight. Place the chair upright on the floor. Press firmly and evenly on the seat edges until the product sits level but do not lean against the chair back. Once the chair sits level on the desired surface, fully tighten each bolt.



Cause:

. Chair can be wobbly or unlevelled if assembly is completed in a different room or surface than where the product is intended to primarily reside.

Solution:

. When assembling your chair, make sure to do it in the location that the chair will most often be used. Uneven flooring frequently accounts for wobbling issues.

ISSUE: HOLES ARE MISALIGNED

Cause:

. This issue can occur when some bolts are tightened fully before all other bolts are tightened or attached.

Solution:

. Loosen each bolt in the seat box (front legs, back corner-blocks and back apron) until finger tight. This will allow you to realign the holes and properly fasten the bolts to the frame.