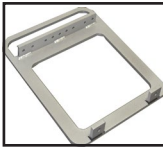




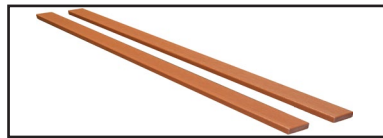
## Assembly Instructions Plaza Collection 6 Ft Backless Bench

TOOLS REQUIRED: 1/2" SOCKET  
RATCHET & POWERED DRIVER  
PHILLIPS SCREWDRIVER

### MATERIAL



(2) STEEL BENCH ENDS



(2) 2" x 4" x 72" PLASTIC SLATS



(2) 2" x 4" x 72" BULLNOSE PLASTIC SLATS



(1) STEEL BENCH SUPPORT



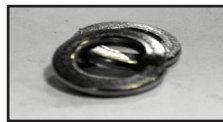
(34) 5/16" SS HEX LAG SCREWS



(34) 5/16" SS FLAT WASHERS



(2) 5/16" x 1" SS PHILLIPS PAN HEAD SCREW



(2) 5/16" SS LOCK WASHERS



(2) 5/16" SS HEX NUTS

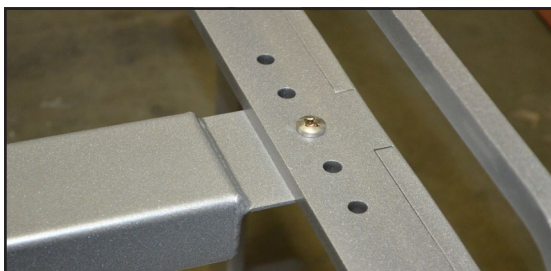
### INSTRUCTIONS

#### PLEASE NOTE BEFORE ASSEMBLY

- Check materials list to verify all items have been shipped. Extra hardware may be included
- Assembly will require two people.
- Assemble the bench on a flat and level surface.



Picture A



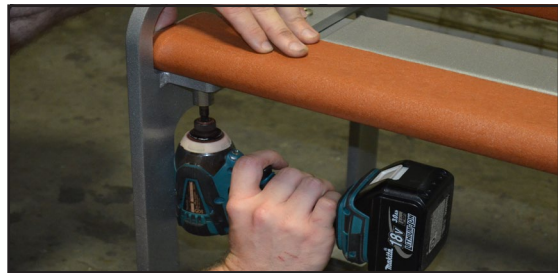
Picture B

**Step 1.** Have each person hold a bench end up-right with anchor feet and slat mounting ledge facing in. Place bench support flush on the bottom side of the ledge aligning the middle notch on the support with the center most hole on each bench end. See Picture 'A'.

**Step 2.** Insert a 5/16" x 1" Pan Head Screw through the center hole in each bench end and support notch with the Phillips Head facing up. Attach with a 5/16" Lock washer and Hex Nut, only finger tight at this point. See Picture 'B'.



Picture C



Picture D

**Step 3.** Place a bullnose slat on the front and back sides of the bench ends resting on the support ledge. The bullnose edge should be on the inside of the bench end support rail. You can place the rounded edge of the slat against the rail for ease in alignment. Adjust the bench ends so the spacing is even at each bench end, both front and back. See Picture 'C'.

**Step 4.** Attach the front and back bullnose slats to each support end with the 5/16" flat washers and hex lag screw to hold the slats in position, do not fully tighten or install all screws at this step. See Picture 'D'.

**Step 5.** Evenly space the 2 slats in line with the attached bullnose slats. Attach with 5/16" flat washer and hex lag screws to each bench end. See Picture 'E'. Check the position and alignment of the slats to ensure they are in line and evenly spaced. See Picture 'F'. Make any necessary adjustments and tighten the previously installed hex lag screws prior to moving to the next step.



Picture E



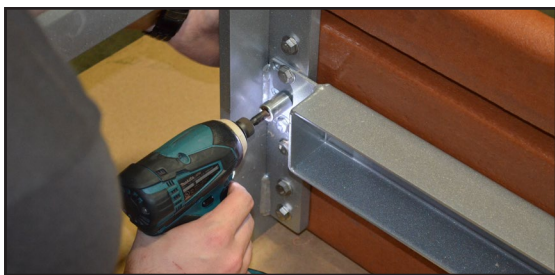
Picture F

**Step 6.** Carefully flip the bench on it's side with the bench ends perpendicular to the ground. Lay the bench ends on cardboard or other protective barrier to protect from scratches. Starting at the center of each slat and working out, attach the slats using the 5/16" flat washer and hex lag screws. Fully secure but do not overtighten. See Picture 'G'.



Picture G

**Step 7.** With the bench still on it's side, tighten the pan head screw and nut attaching the center support to each bench end. See Picture 'H'. Ensure all hardware is in place and secure. Bench is ready to be anchored to the ground using the appropriate hardware.



Picture H