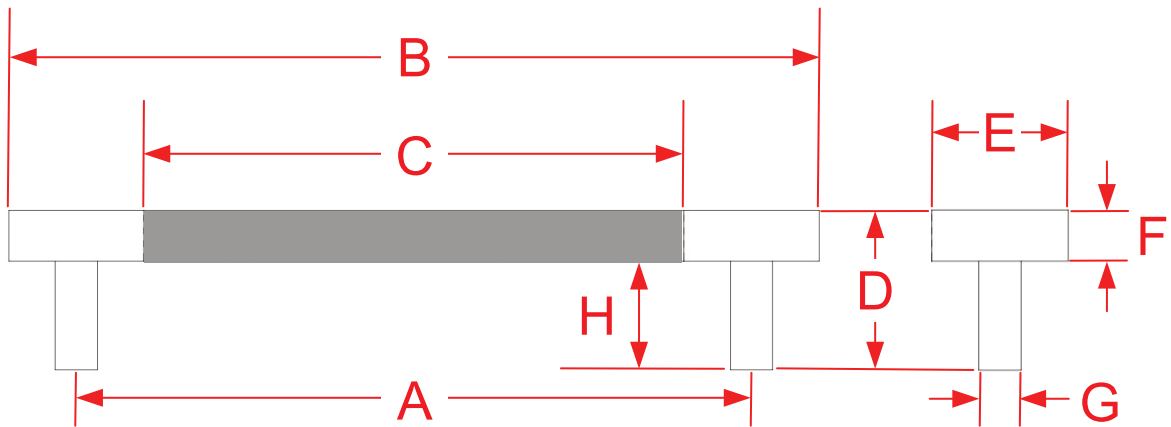


# L827, L828 and L829 Series Cabinet, Appliance, Door and Shower Pulls

Finishes for Life  
TANNING-FREE GUARANTEED



Part #	A Center to Center	B Overall	C Leather Length	D Projection	E Width	F Thickness	G Base Width	H Inside Gap
L827-3.5	3.5000"	4.5000"	2.5000"	1.1875"	0.7500"	0.3750"	0.3750"	0.8125"
L827-4	4.0000"	5.0000"	3.0000"	1.1875"	0.7500"	0.3750"	0.3750"	0.8125"
L827-5	5.0000"	6.0000"	4.0000"	1.1875"	0.7500"	0.3750"	0.3750"	0.8125"
L827-6	6.0000"	7.0000"	5.0000"	1.1875"	0.7500"	0.3750"	0.3750"	0.8125"
L827-8	8.0000"	9.0000"	7.0000"	1.1875"	0.7500"	0.3750"	0.3750"	0.8125"
Custom Sizing Available up to 30.0000" Overall Length						Supplied with 8-32 Screws		
L828-6	6.0000"	7.0000"	5.0000"	1.5000"	0.7500"	0.5000"	0.3750"	1.0000"
L828-8	8.0000"	9.0000"	7.0000"	1.5000"	0.7500"	0.5000"	0.3750"	1.0000"
L828-10	10.0000"	11.0000"	9.0000"	1.5000"	0.7500"	0.5000"	0.3750"	1.0000"
L828-12	12.0000"	13.0000"	11.0000"	1.5000"	0.7500"	0.5000"	0.3750"	1.0000"
Custom Sizing Available up to 30" Overall				Supplied with 8-32 Screws			Page 1 of 2	

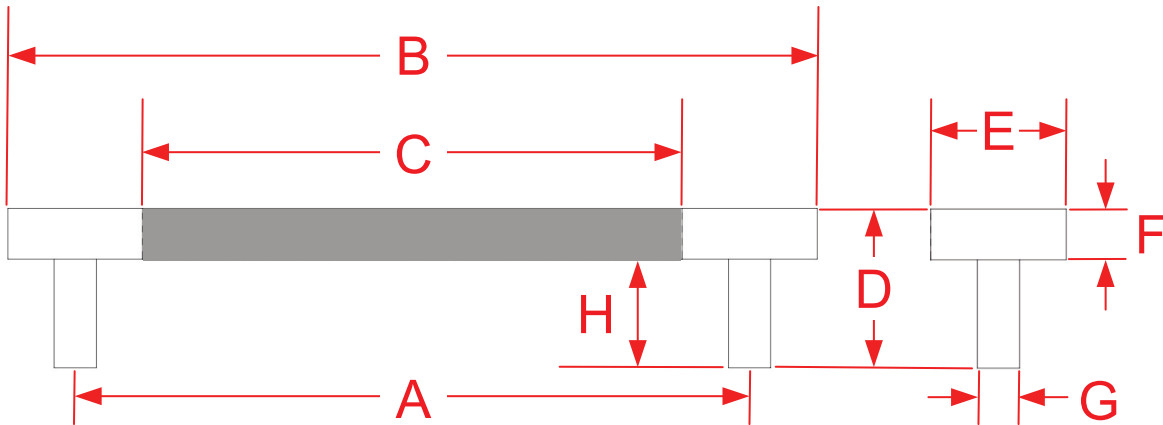
The TANNER'S CRAFT™  
[www.tannerscraft.com](http://www.tannerscraft.com)  
 860.489.9233



The Tanner's Craft is a  
 Division of  
 Colonial Bronze  
 Manufacturing Fine  
 Hardware Since 1927

# L827, L828 and L829 Series Cabinet, Appliance, Door and Shower Pulls

Finishes for Life  
TANNING-FREE GUARANTEED



Part #	A Center to Center	B Overall	C Leather Length	D Projection	E Width	F Thickness	G Base Width	H Inside Gap
L829-8	8.0000"	10.0000"	6.0000"	2.0000"	1.0000"	0.7500"	0.6250"	1.2500"
L829-10	10.0000"	12.0000"	8.0000"	2.0000"	1.0000"	0.7500"	0.6250"	1.2500"
L829-12	12.0000"	14.0000"	10.0000"	2.0000"	1.0000"	0.7500"	0.6250"	1.2500"
L829-18	18.0000"	20.0000"	16.0000"	2.0000"	1.0000"	0.7500"	0.6250"	1.2500"

Custom Sizing Available up to 30" Overall

Supplied with 1/4-20 Screws

Page 2 of 2

The TANNER'S CRAFT™  
[www.tannerscraft.com](http://www.tannerscraft.com)  
 860.489.9233



The Tanner's Craft is a  
 Division of  
 Colonial Bronze  
 Manufacturing Fine  
 Hardware Since 1927