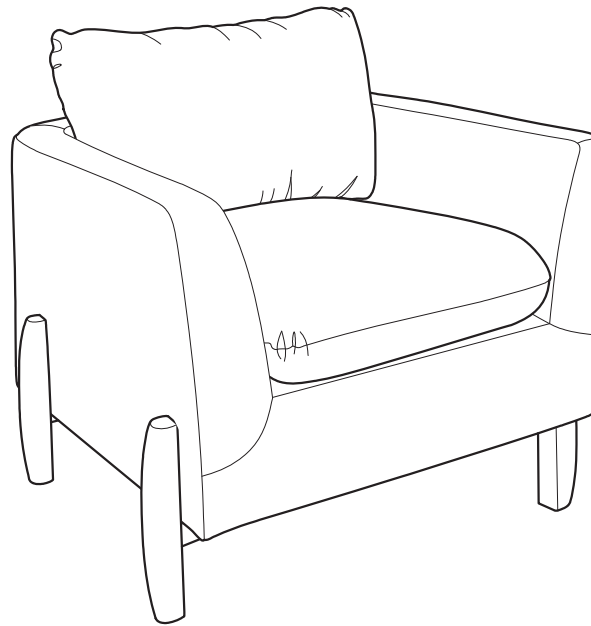


CHAIR

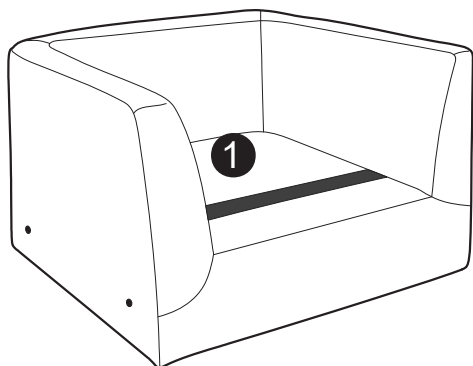
ASSEMBLY INSTRUCTIONS



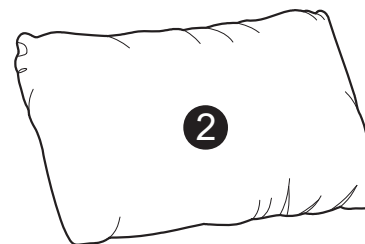
WARNING

- This product has been designed for seating one (1) average adult. To prevent injury and damage to this unit, PROHIBIT jumping on it.
- This product is designed for home use and not intended for commercial use.
- Recommended # of people needed for handling: 2 (however it is always better to have an extra hand.)
- THIS INSTRUCTION BOOKLET CONTAINS **IMPORTANT** SAFETY INFORMATION. PLEASE READ AND KEEP IT FOR FUTURE REFERENCE.

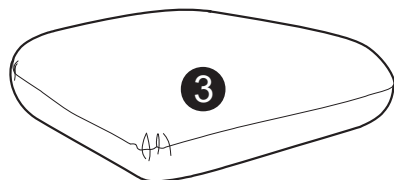
PARTS



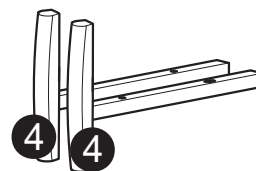
Chair Body
QTY:1



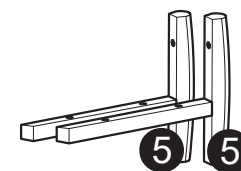
Back Cushion
QTY:1



Seat Cushion
QTY:1

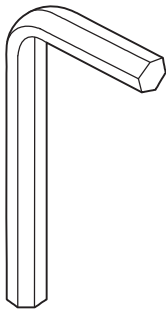


Left Facing Leg Base
QTY:2

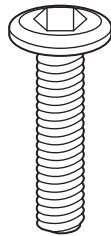


Right Facing Leg Base
QTY:2

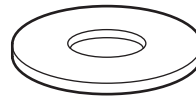
HARDWARE



A
Hex Key
M4 x 60mm
QTY : 1 PC



B
Bolt
M6 x 50mm
QTY : 12 PCS

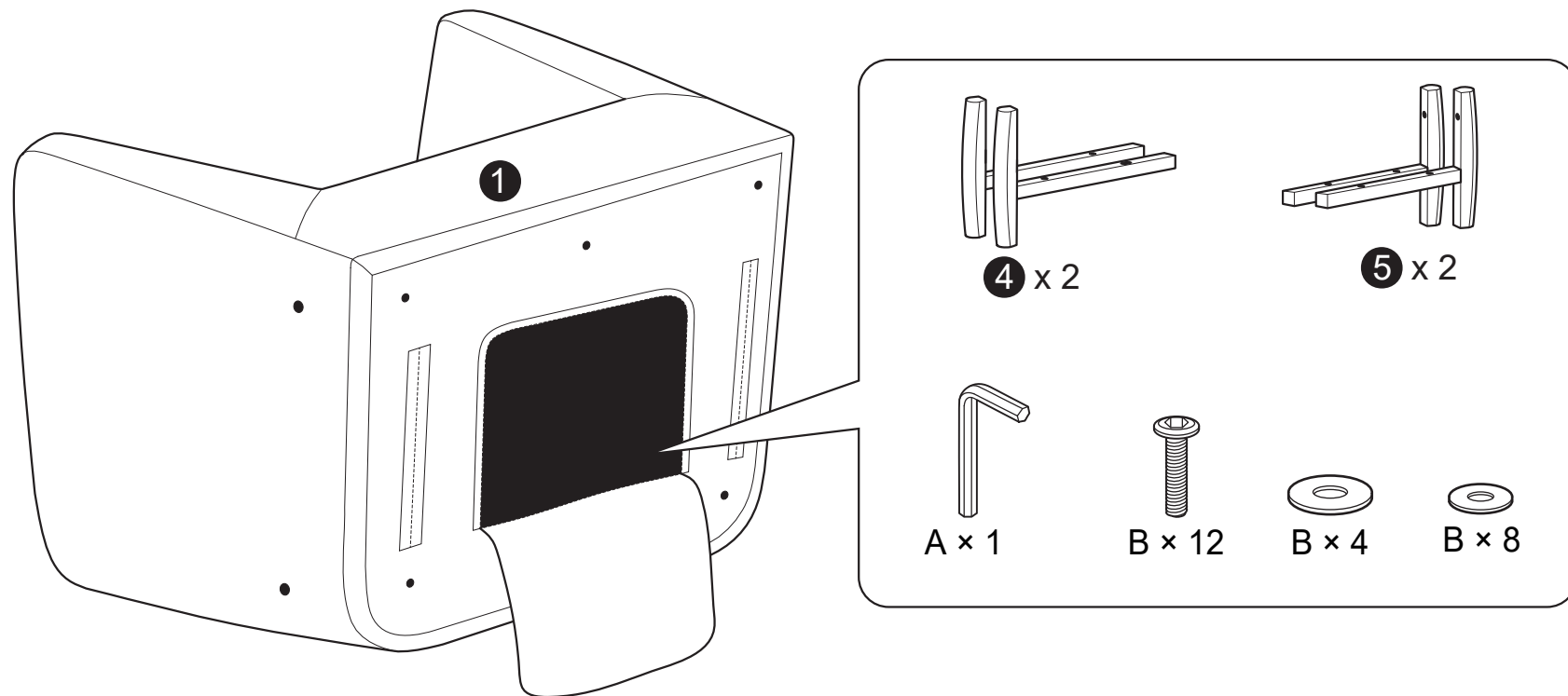


C
Flat Washer
M8 x 19mm
QTY : 4 PCS

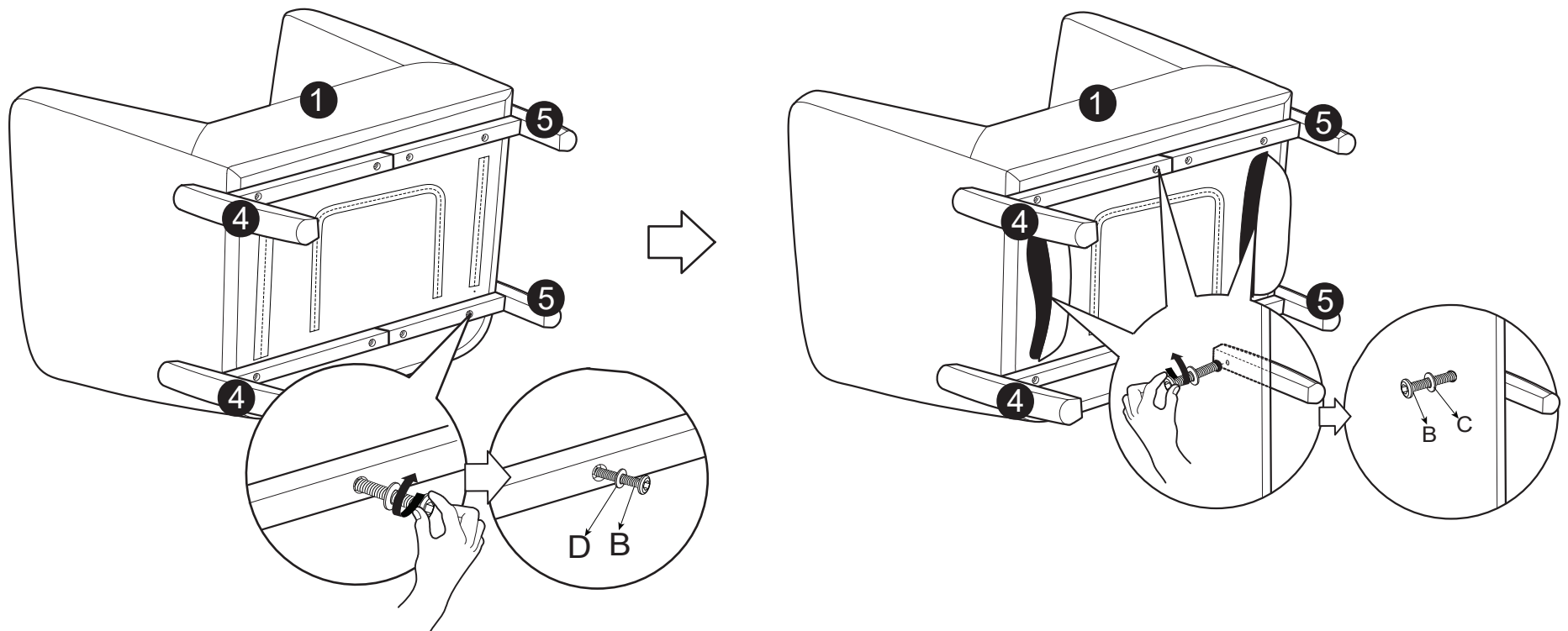
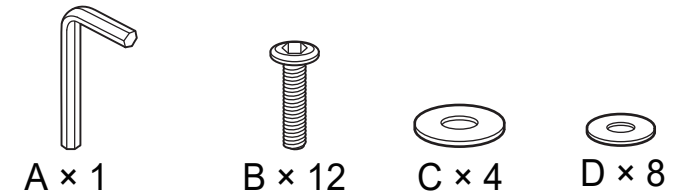


D
Flat Washer
M8 x 15mm
QTY : 8 PCS

PACKAGING :



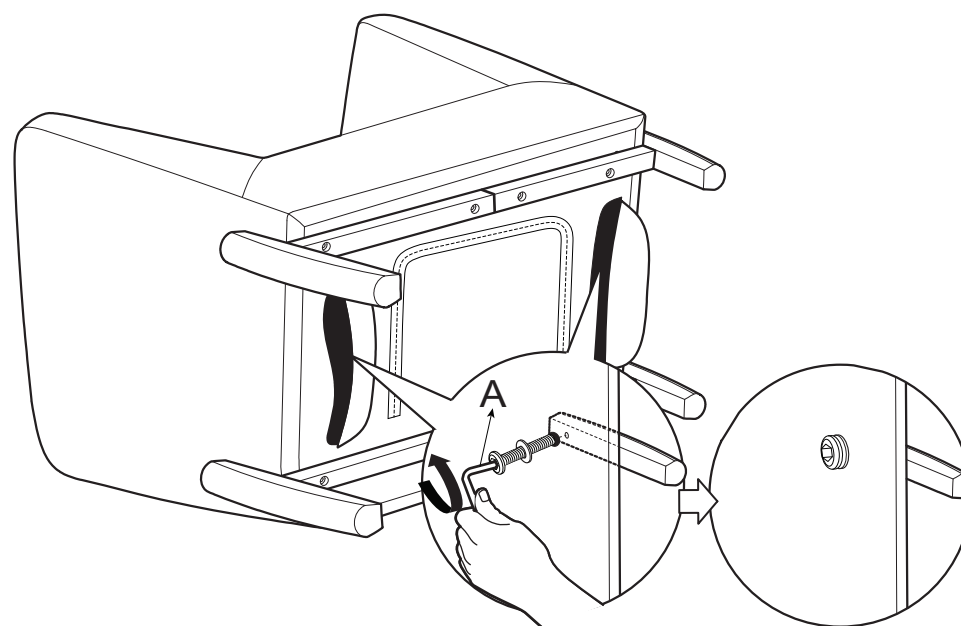
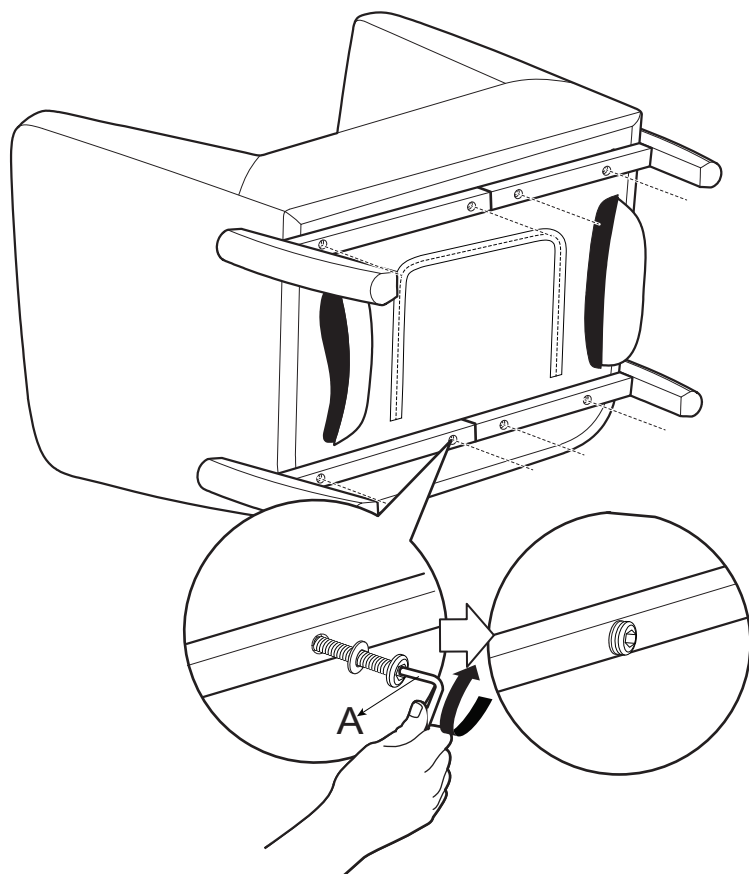
LEG AND BASE ASSEMBLY :



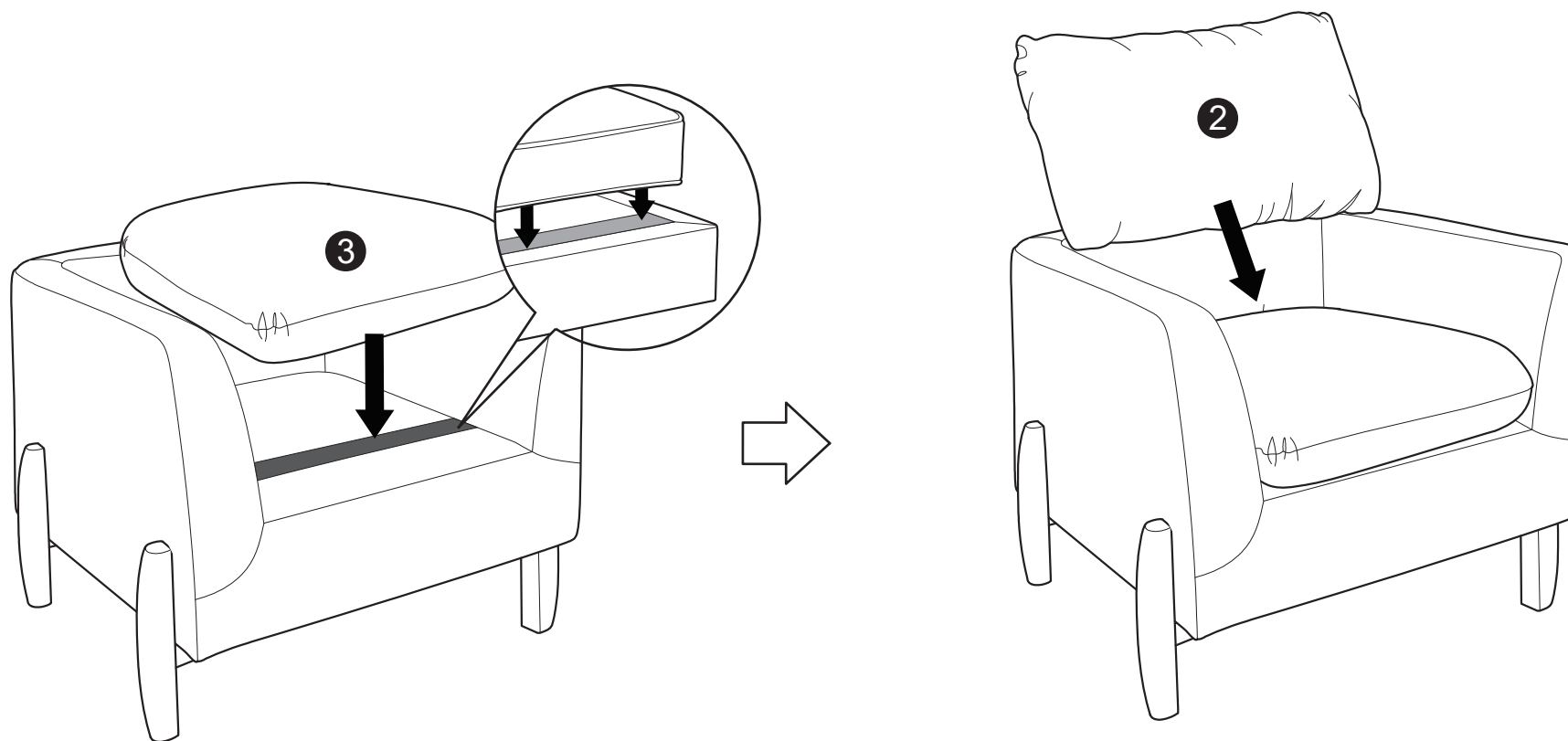
TIGHTEN BOLTS :



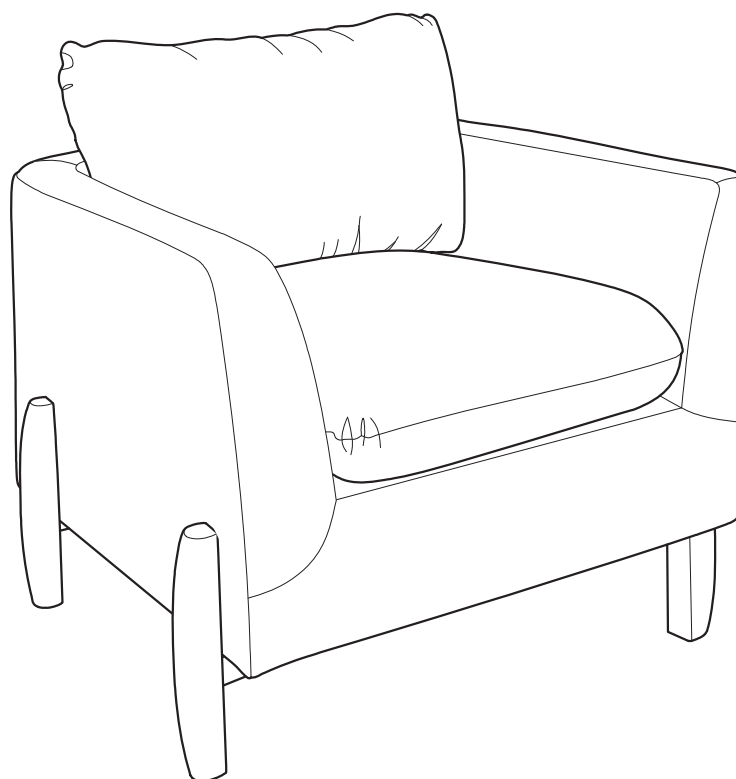
A × 1



BACK AND SEAT CUSHIONS ASSEMBLY :



INSTALLATION COMPLETE :



Need assistance?

Please call :

866-626-7826

For prompt, reliable service; please have your assembly manual ready.