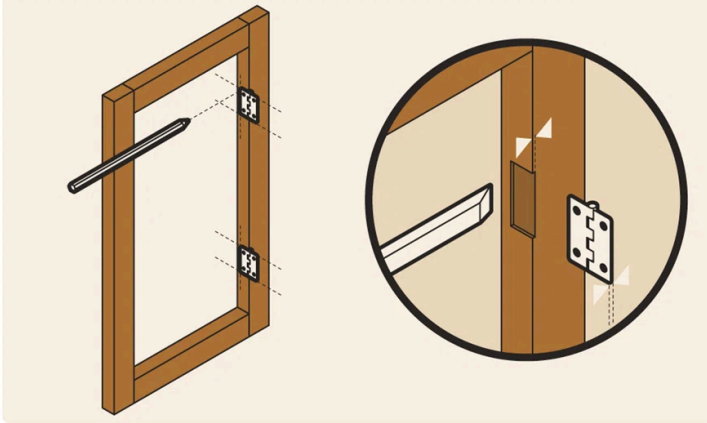


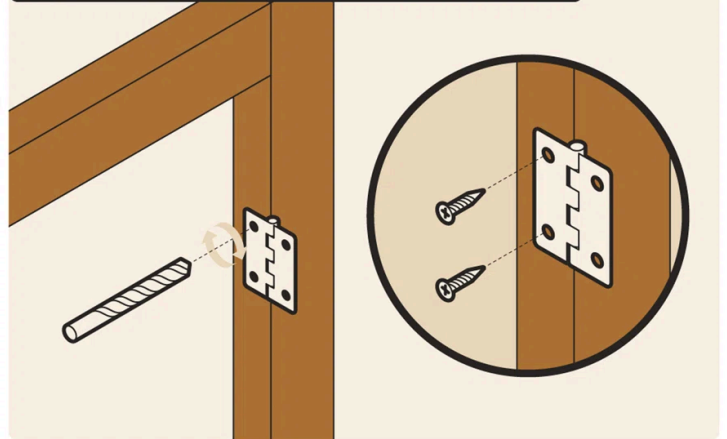
Installation Instructions

1. Marking on the cabinet frame



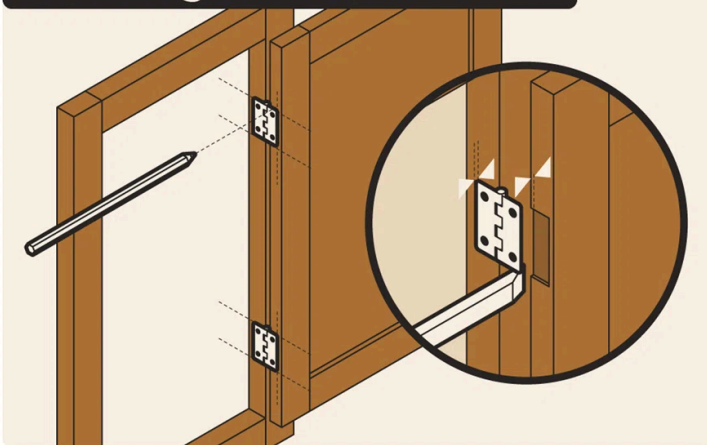
Place the hinge in the open position, trace its outline, and use a chisel to create a mortise matching the hinge leaf thickness.

2. Attach to the cabinet frame



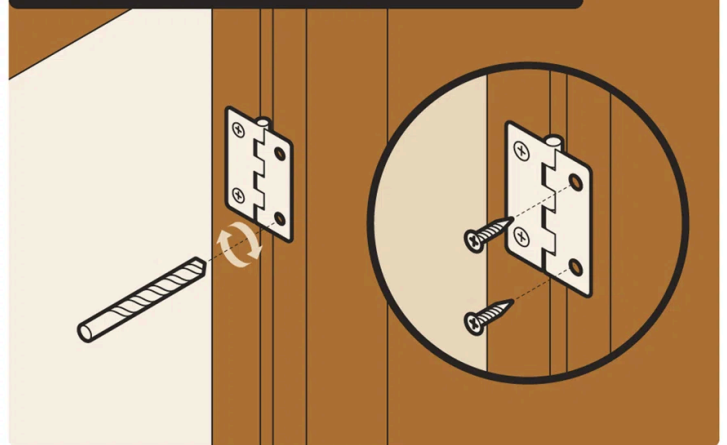
Drill pilot holes and screw the hinge leaf to the cabinet frame.

3. Marking on the door



Position the door, trace the hinge outline, and create a mortise of the same depth for the hinge leaf.

4. Attach to the door



Drill pilot holes and secure the second hinge leaf to the door.