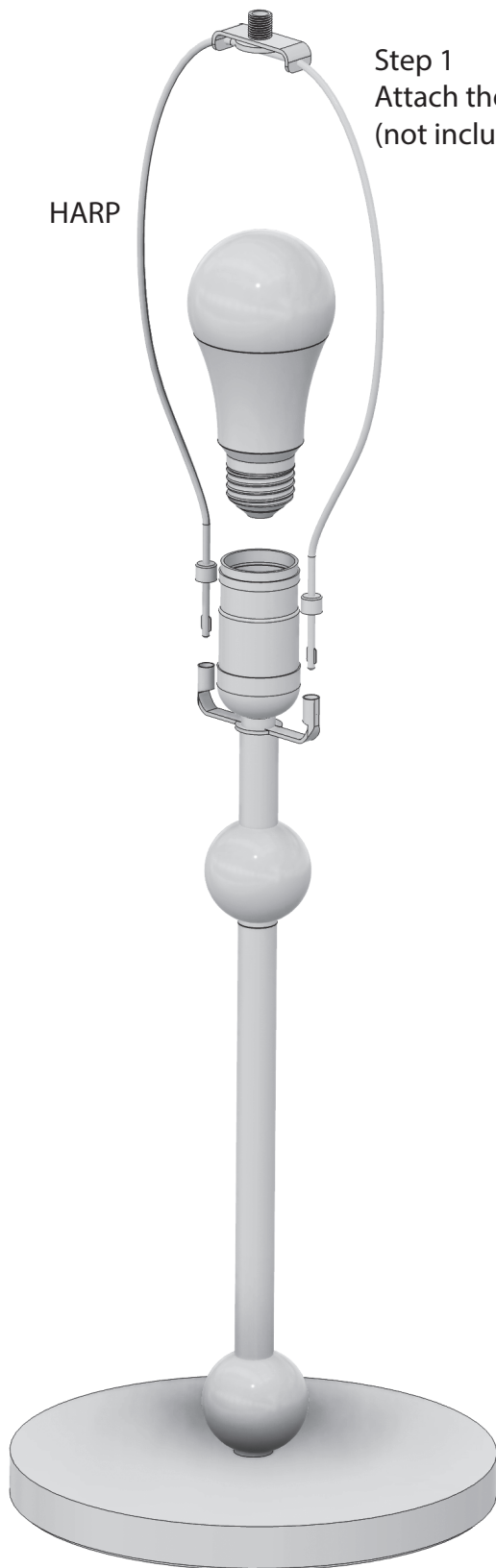


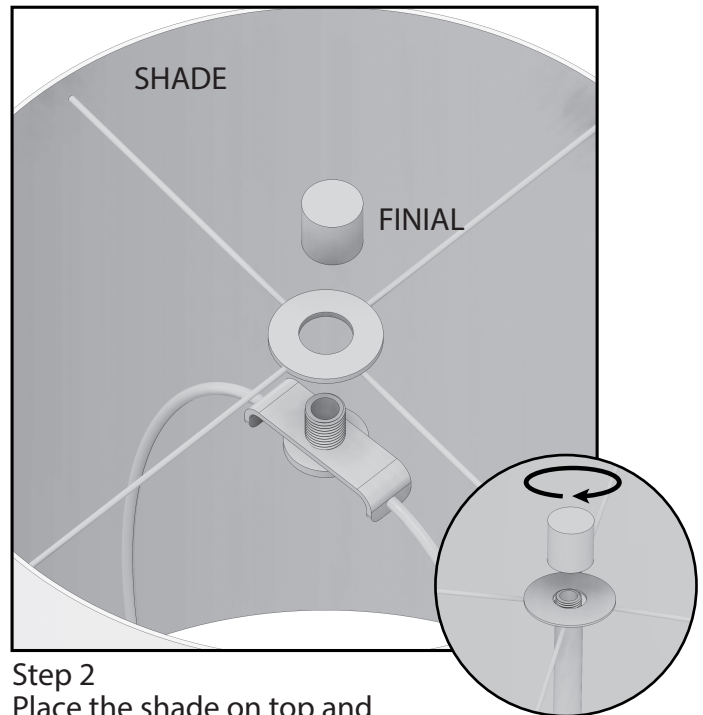
**CAUTION**

• Inspect the wire insulation for any cuts, abrasions, or exposed copper that may have resulted during shipping. If there is a defect in the wire, do not attempt installation.

• Before starting installation of this fixture or removal of a previous fixture, disconnect the power by turning of the circuit breaker or by removing the fuse at the fuse box.

**Step 1**

Attach the Harp to the fixture and Install a bulb (not included). E26 TYPE A 60 Watt or less watt.

**Step 2**

Place the shade on top and complete the assembly with the finial.