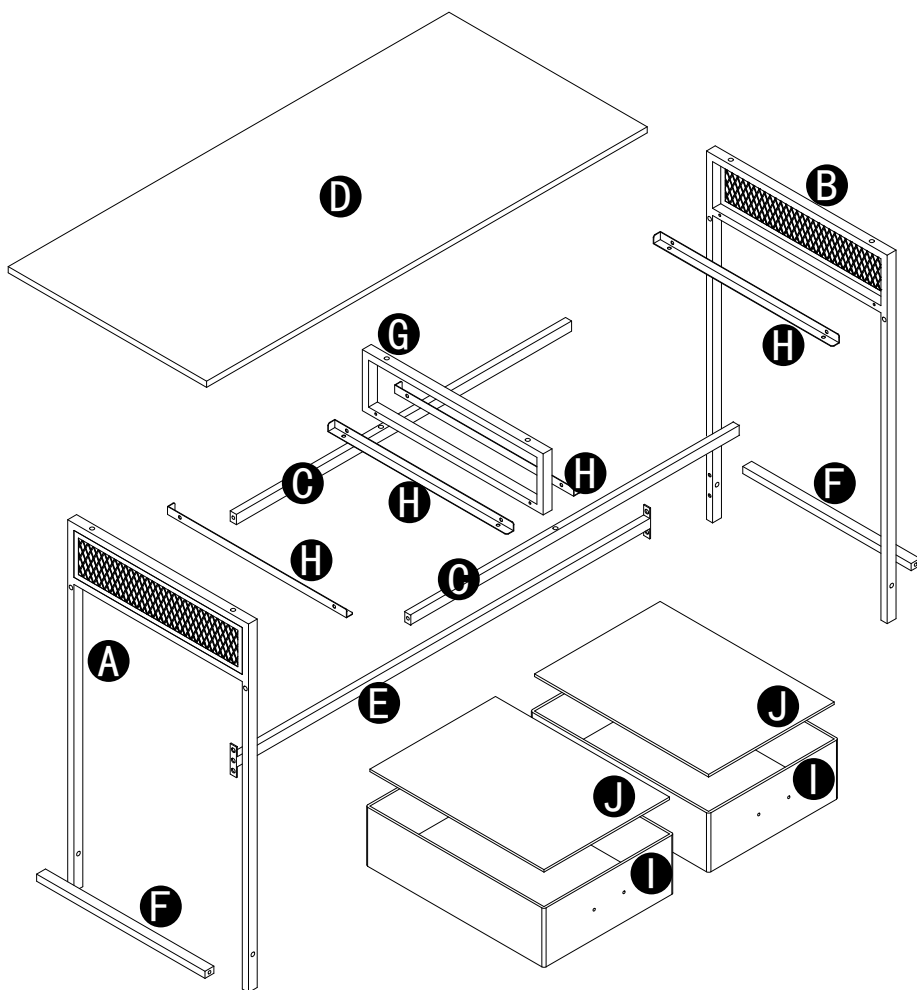


Desk with 2 Fabric Drawers User Manual

Disassembly Diagram



Before assembly, please read the USER MANUAL thoroughly for quick assembly, and check according to Accessories.
If you have any concerns or questions during installation or about product itself, please feel free to contact us via Amazon Orders or Customer Support Email

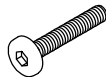
Accessories



1 4PCS



2 6PCS



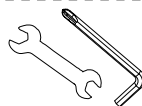
3 10PCS



4 2PCS



5 8PCS



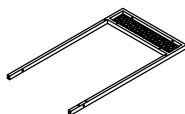
6 1PC



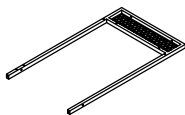
7 2PCS



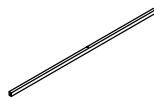
8 4PCS



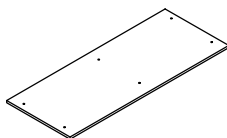
A 1PC



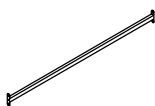
B 1PC



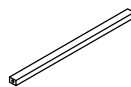
C 2PCS



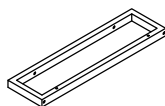
D 1PC



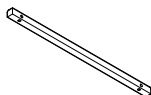
E 1PC



F 2PCS



G 1PC



H 4PCS



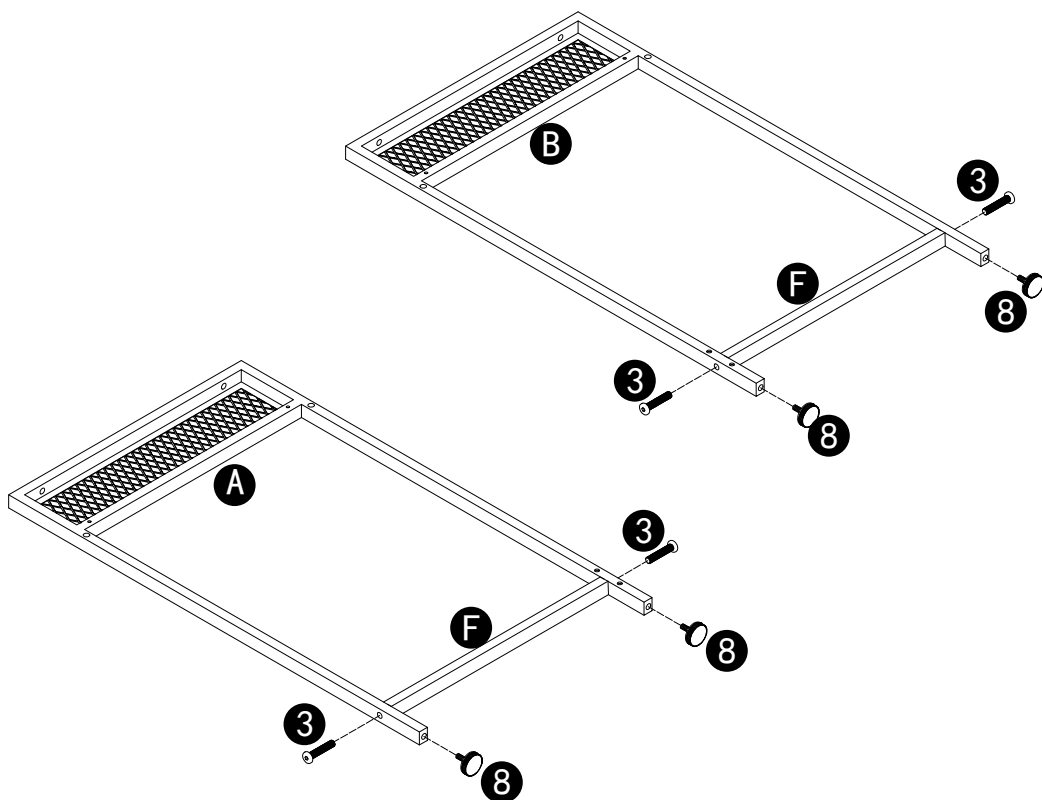
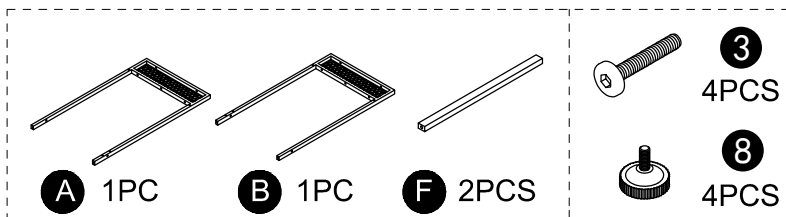
I 2PCS



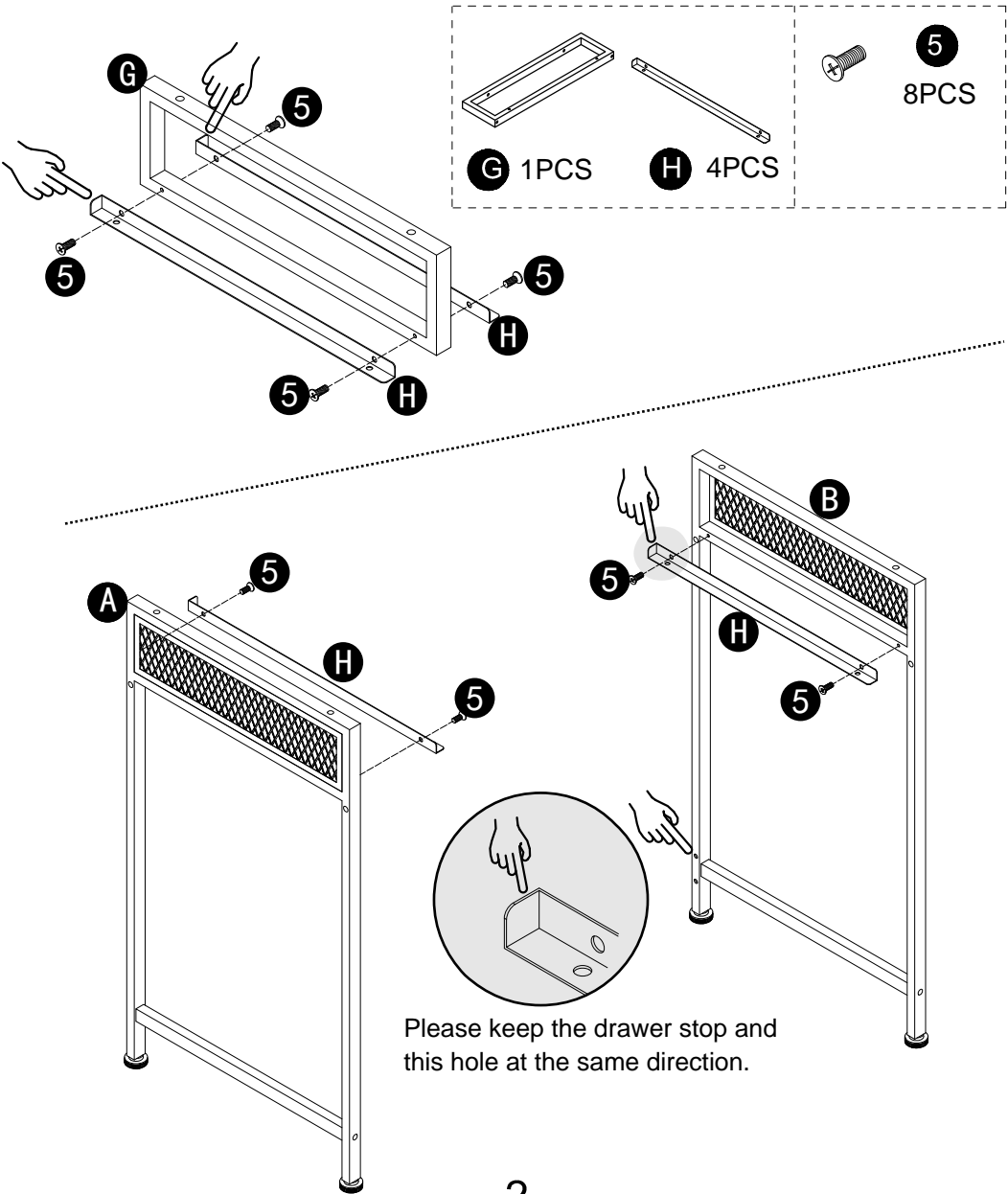
J 2PCS

Installation Steps

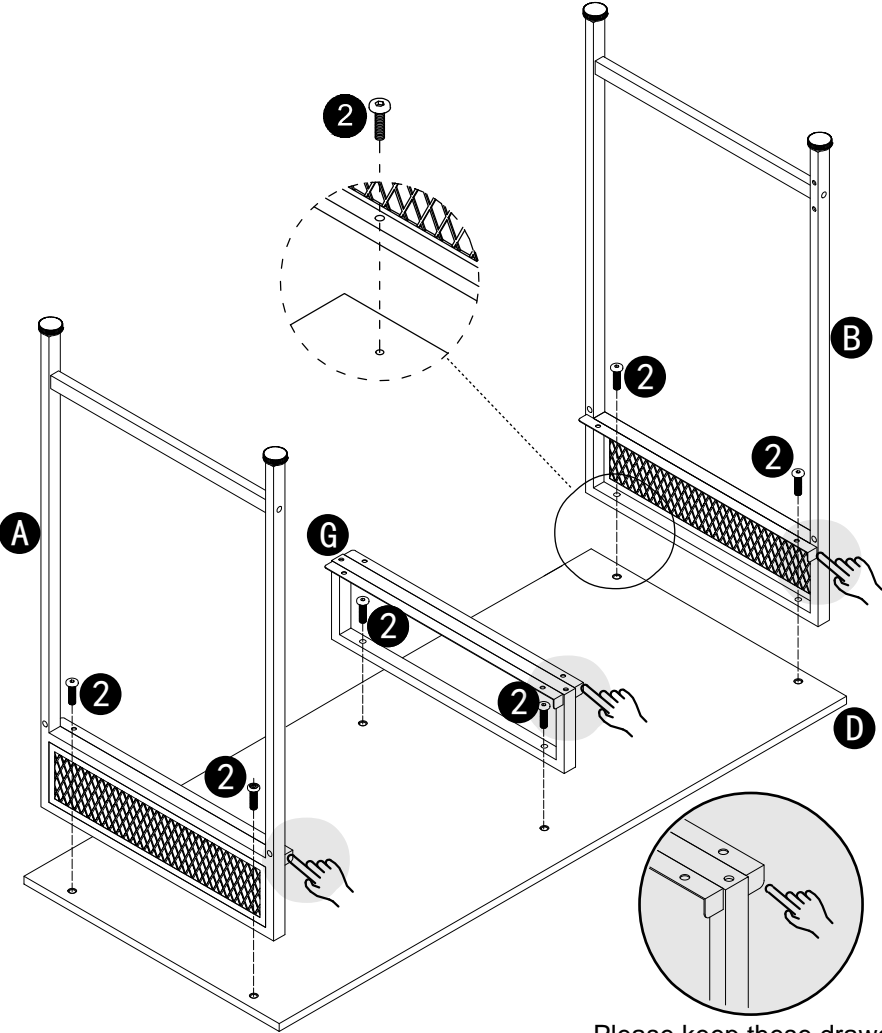
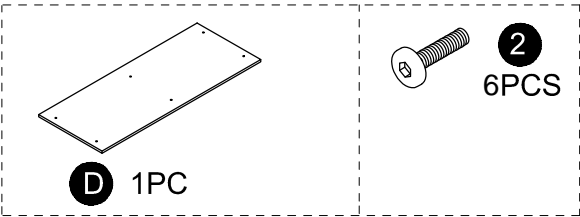
Step1: Assemble the metal bar **F** between the frame **A** and **B** with screws **3**. Screw the adjustable feet **8**.



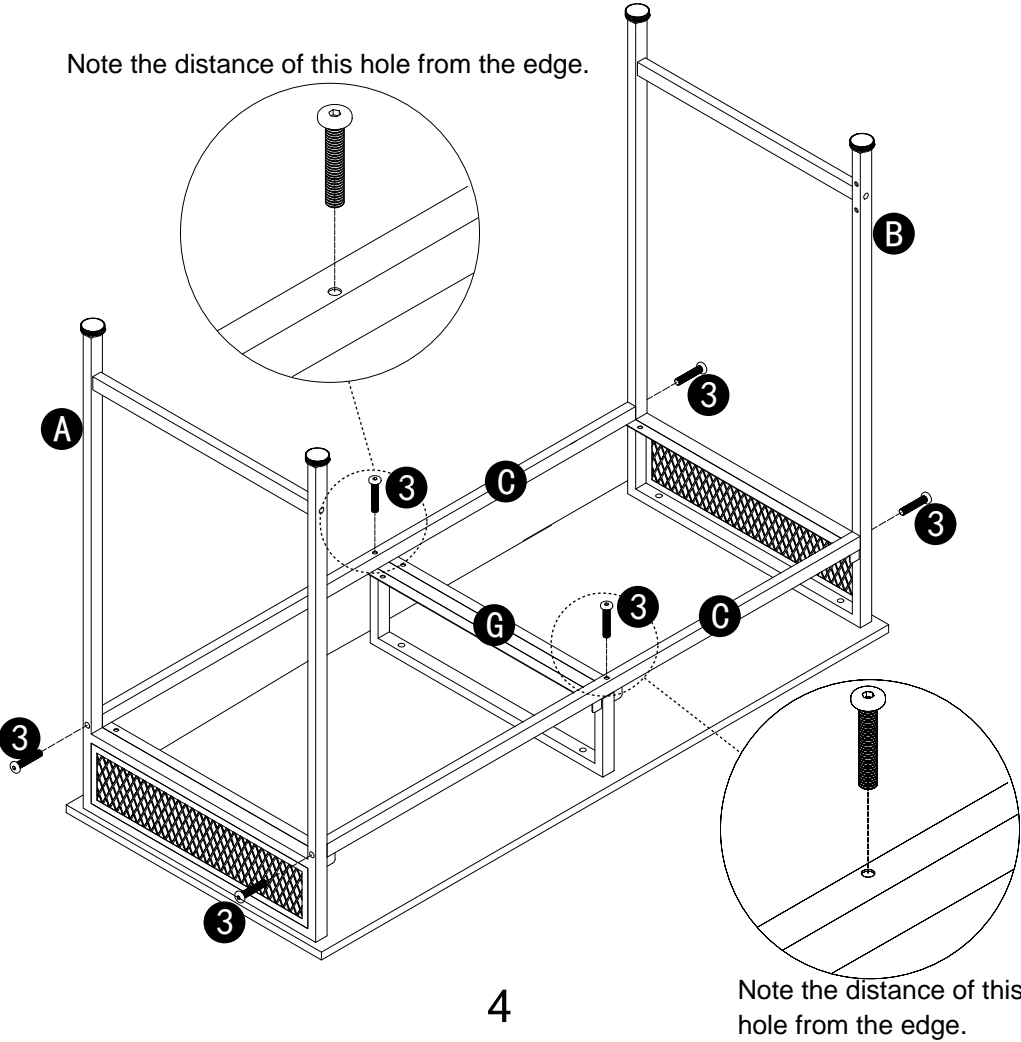
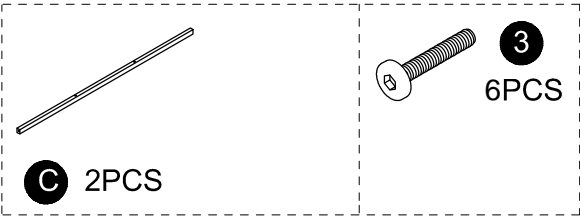
Step2: Secure the adapting pieces **H** on the frame **A**、**B** and **G** with screws **5**.



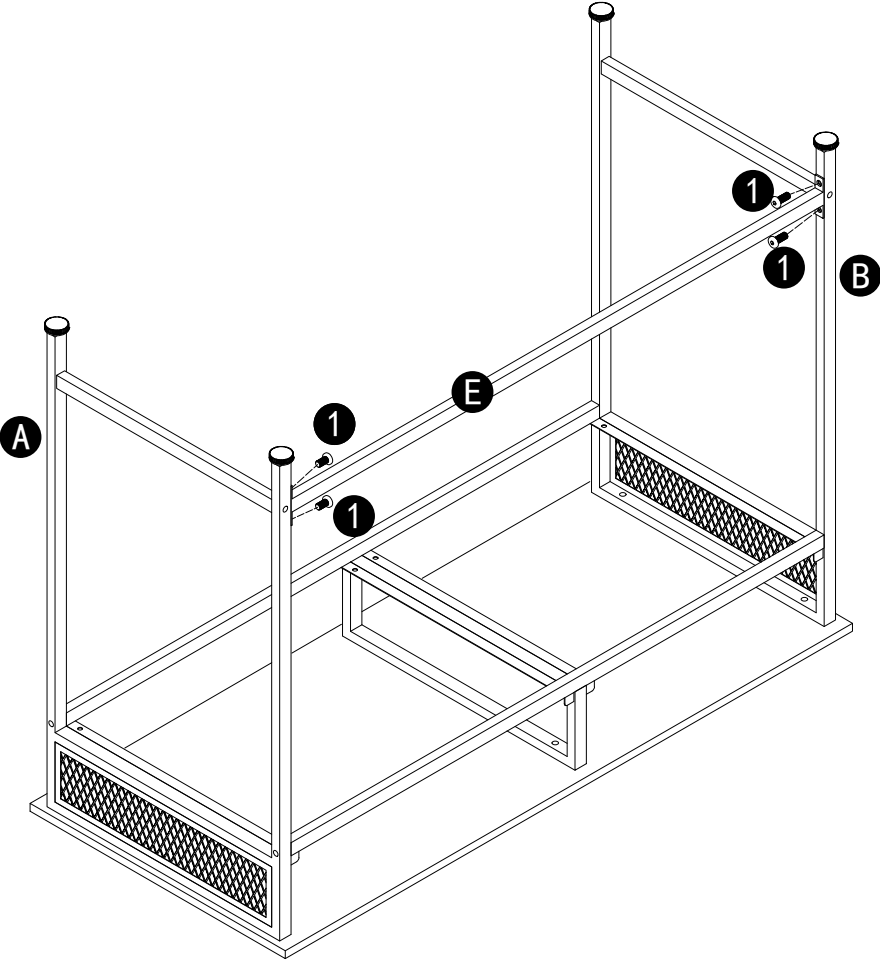
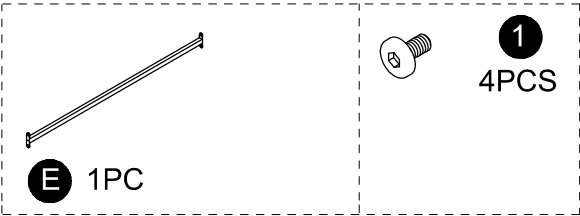
Step3: Fix the frame **A**、**B** and **G** to the top board **D** with screws **2**.



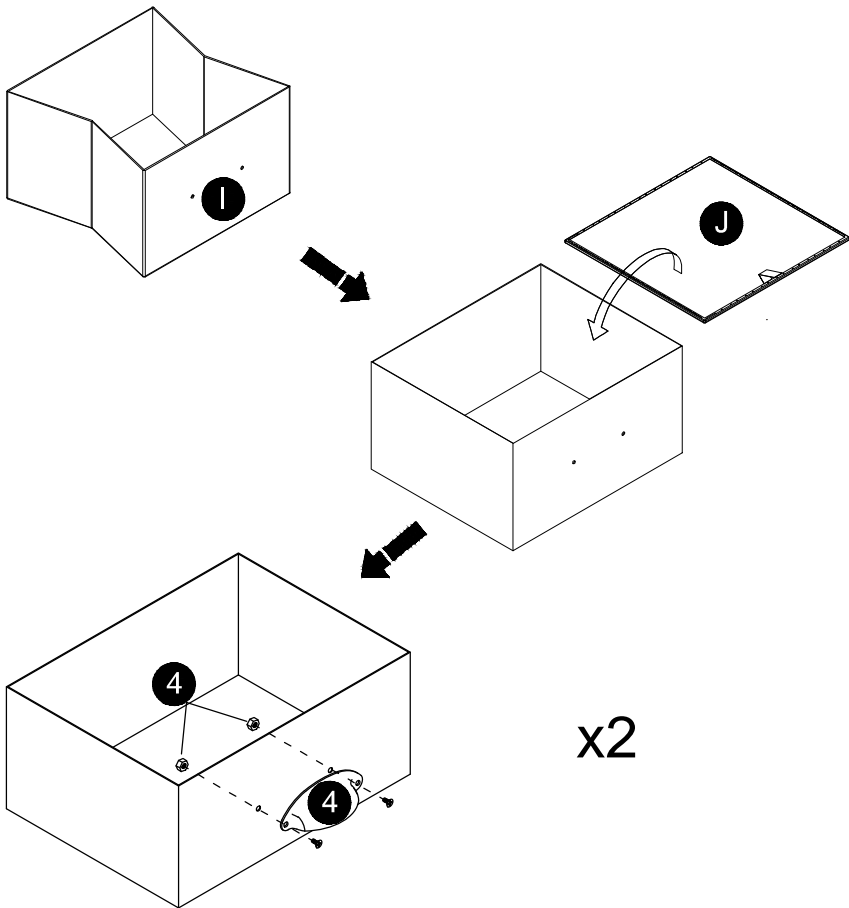
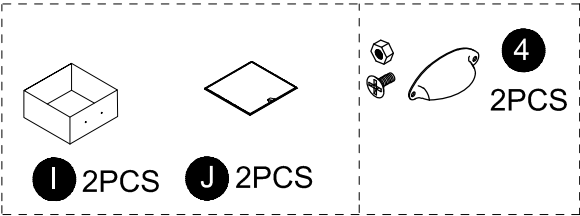
Step4: Install the metal rod **C** on the frame **A**、**B** and **G** with screws **3**.



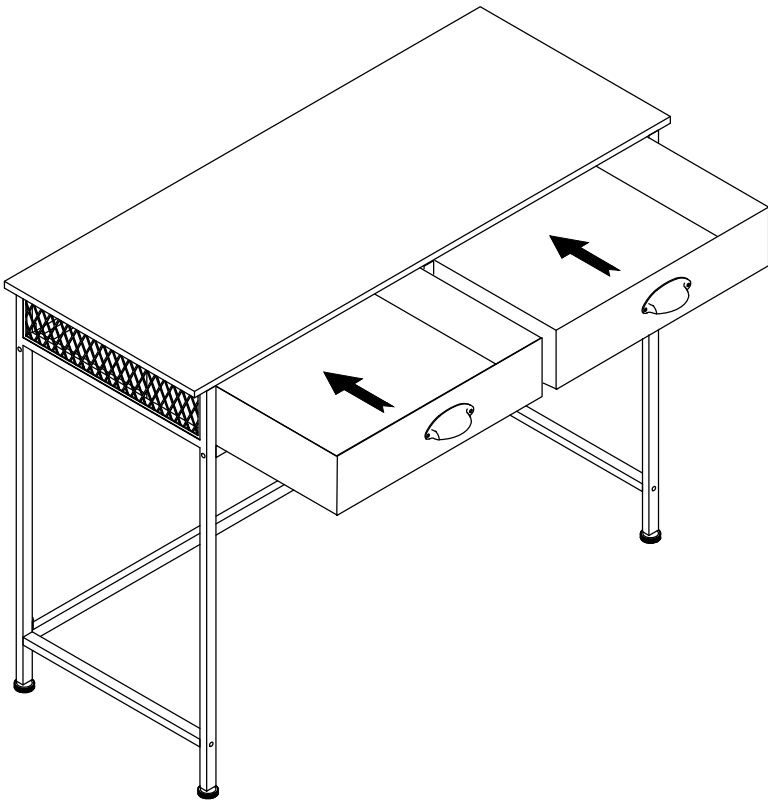
Step5: Install the metal rod **E** on the frame **A** and **B**
with screws **1**.



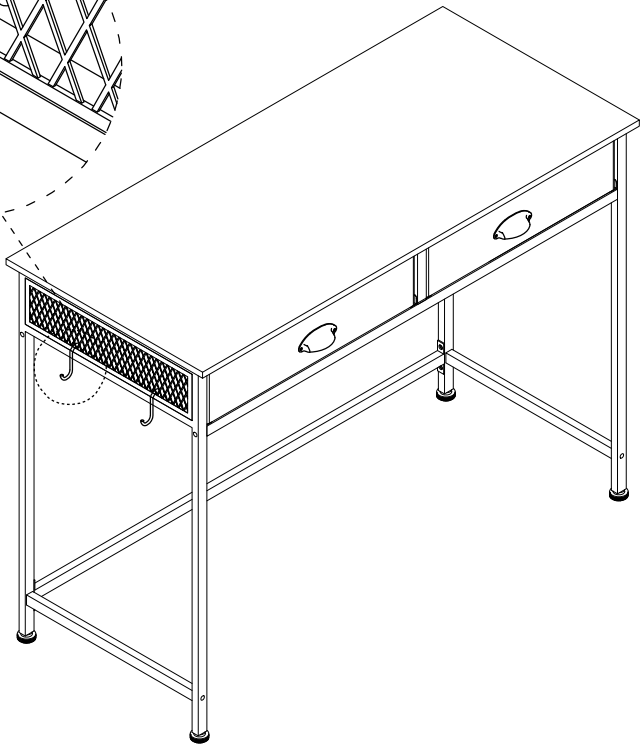
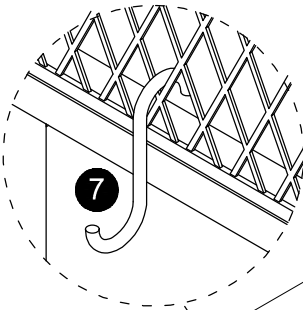
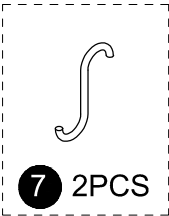
Step6: Assemble the fabric drawer.



Step7: Put in the drawer.



Step8: You can choose the ways of hooks hang on the shelf, as shown below.



Customer Service

1-Year Warranty

We guarantee your product is free from defects in product material and workmanship for one(1)year starting from the date of purchase during normal use of household conditions. If your appliance fails within the limited warranty period, we will arrange a new replacement free of charge, and cover all the shipping costs.

Quick Response within 24 Hours

If you are still unable to resolve the issue you are experiencing, please contact us immediately at our support email

It doesn't matter if the product has been installed, our customer support team will respond within 24 hours and assist you quickly and efficiently.

The most efficient way to confirm your problem with us is to attach a video or picture illustrating your product issue.

Problems You May Encounter

PART	PROBLEM	SOLUTION
Whole Product	Parts are missing, defective or having wrong parts in package.	You can contact us via Amazon, and we will get back to you within 24 hours. Or, you can reach US via after-sales email:
	Encountering non-human caused damage during usage.	If the product is damaged due to non-human causes, please keep the product and send us photos of it. We will ascertain the cause of the product damage within 48 hours and provide you with a satisfactory solution.
Table Surface	Board Surface is broken, scratched or lack of some screw holes.	You can contact us via Amazon, and we will get back to you within 24 hours. Or, you can reach US via after-sales email:
	The screw holes that on the board and steel frame don't line up.	1. Please tighten the screws on the board by 70%, do not tighten completely. 2. Adjusting board and steel frame until the screw holes are lined up, then tighten all the screws.
	The desk board is uneven or not tight that has gaps after being assembled.	You can contact us via Amazon, and we will get back to you within 24 hours. Or, you can reach US via after-sales email:
Steel Frame	The steel frame is bent, broken, painted, rusted or damaged.	You can contact us via Amazon, and we will get back to you within 24 hours. Or, you can reach US via after-sales email:
	The table is unstable after being assembled.	1. Check if the screws are tightened. 2. Read through out the manual, check are there any parts installed incorrectly or missing assembled. 3. If your problem still can't be solved, please feel free to contact us.

If you can't finish the installation, please feel free to contact us via Amazon or Email:

