

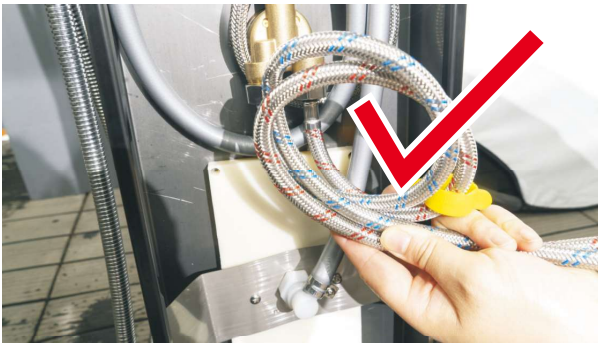
INSTRUCTIONS

LED

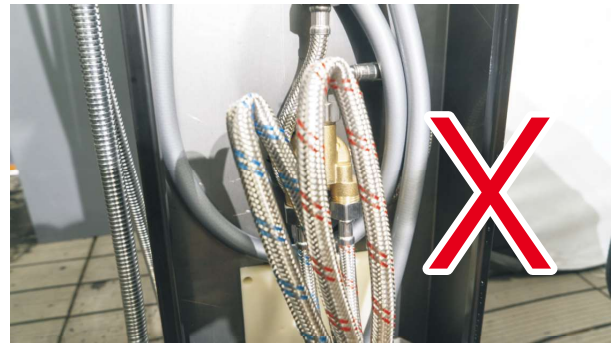
Color Digital Screen



Connection method of water inlet pipe

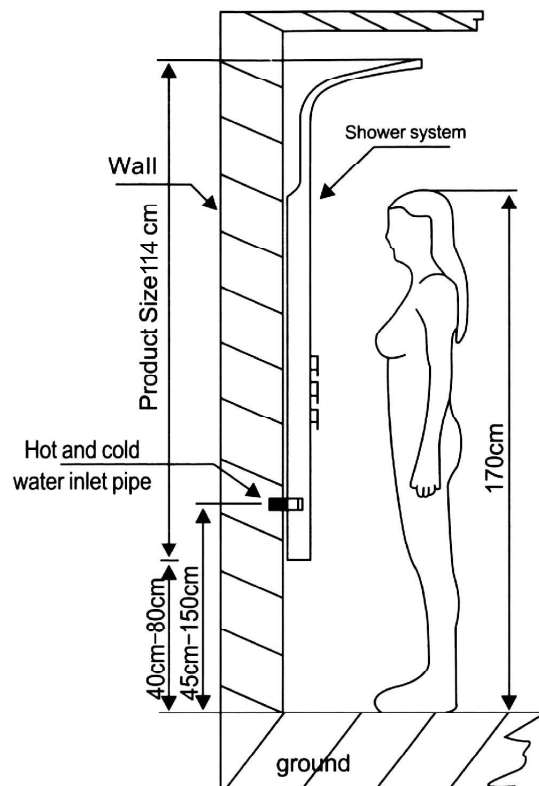


water inlet pipe of shower screen and bending angle into wall after connecting the part that will grow out as shown in the figure



do not fold the water inlet pipe as shown in the figure after that, the water output will be affected or cannot be discharged

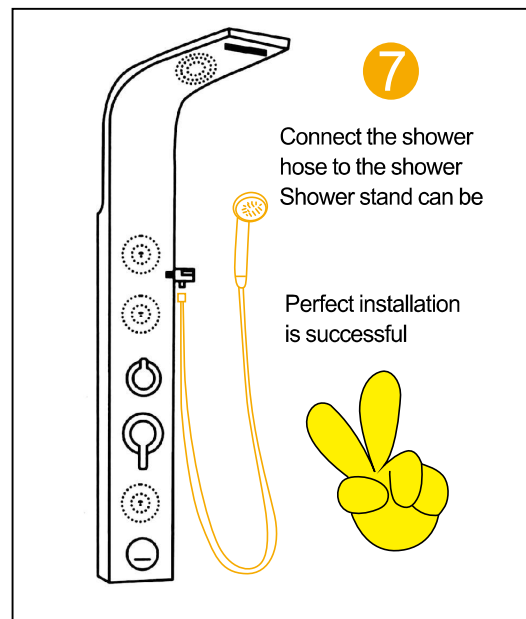
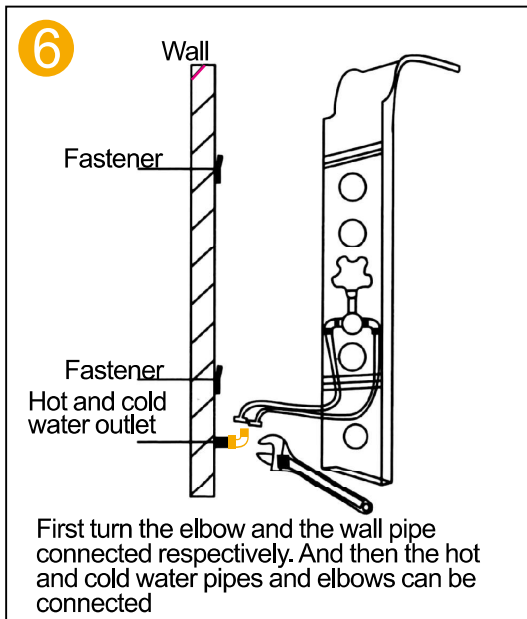
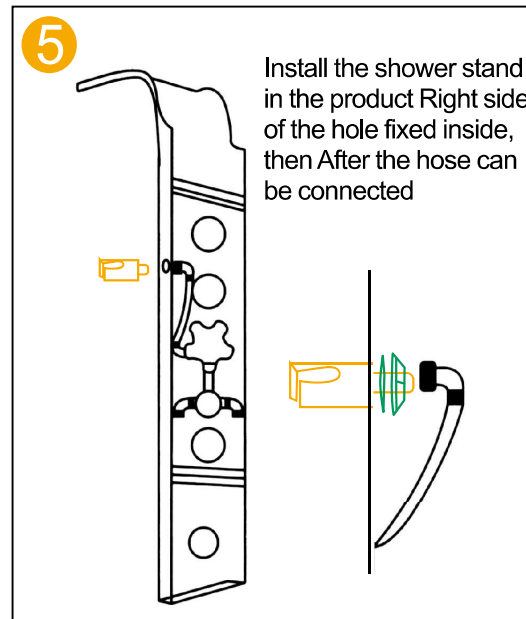
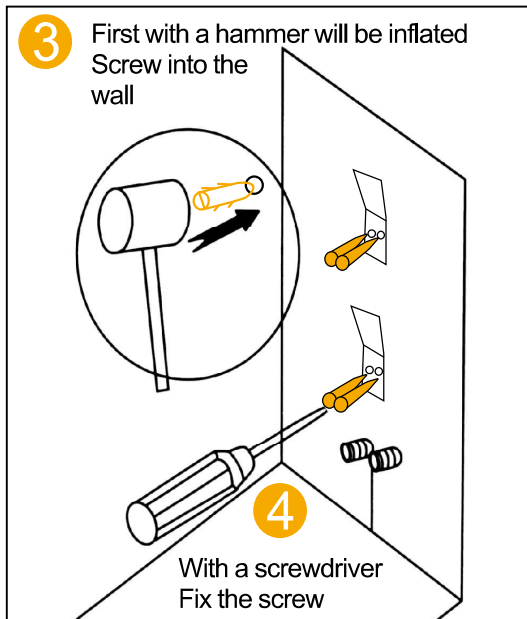
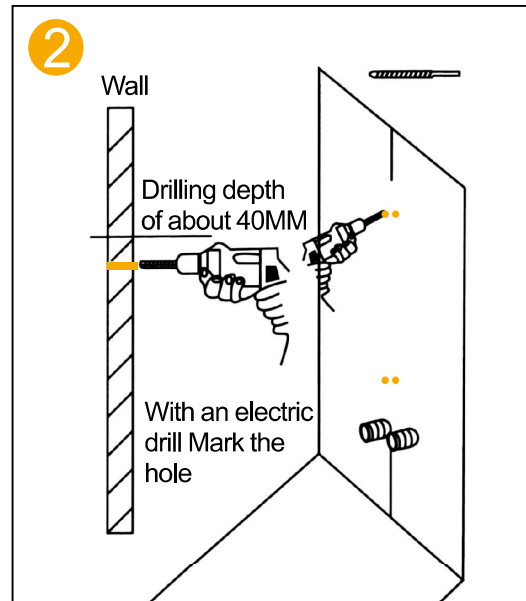
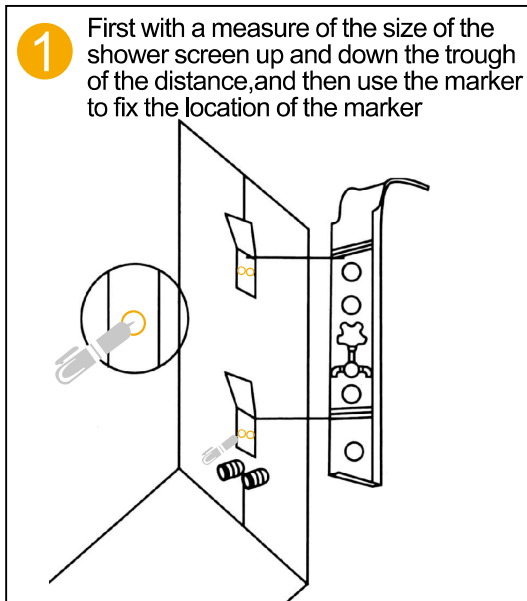
Installation Complete side reference dimension drawing



Installation Notes

1. According to the height of the family height budget shower system installation height, measuring the shower system on the back of the bar Distance, mark on the wall, in the corresponding position of the tag fixed hanging iron (up and down each one)
2. Connect the hot and cold water hose (be sure to clean the magazine and the dirt in the wall Scale, so as not to block, affect the water effect);
3. Shower system hanging on the wall, the upper and lower two cards were clamped in two hanging paste (Note: shower After the system wall, the main body close to the wall is not shaking, do not need to use another glass glue and other tools fixed).

Shower panel series installation diagram



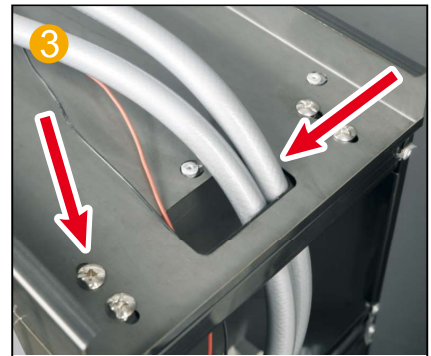
Assembly diagram of split shower panel



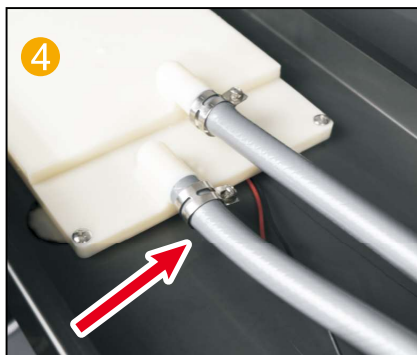
unpacking



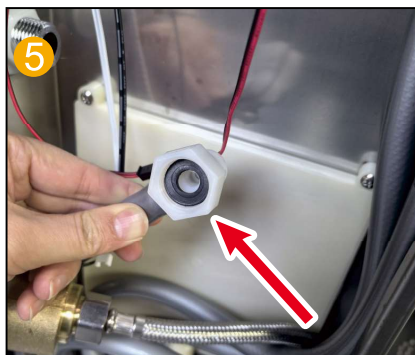
the pipes come in from inside



1. four screws fix it
2. two wires from wear it down here



connect and lock the water pipe



Put the rubber gasket into the handheld showerhead connector



Dock the sockets of the top lamp post and the display screen



mounting bracket



install after completion