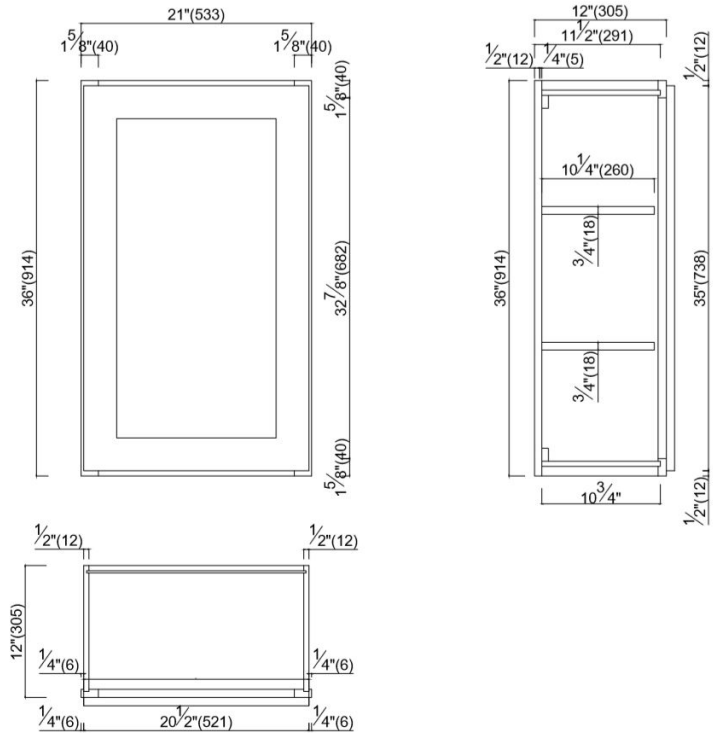


Unassembled Wall Kitchen Cabinet 21x36x12 Espresso



SPECIFICATIONS

MATERIAL CONSTRUCTION:	Wood	NUMBER OF SHELVES:	2
WOOD SPECIES:	Maple	SHELF STYLE:	Wood
ASSEMBLED DIMENSIONS:	36" H x 21" L x 12" D	ADJUSTIBLE SHELVES:	Yes
ASSEMBLED WEIGHT:	40.37 lbs.	SHELF ADJUSTIBILITY INCREMENTS:	2.5"
KITCHEN CABINET TYPE:	Wall	SHELF DIMENSIONS:	19.75" W x 10.25" D
MOUNTING TYPE:	Wall Mount	SHELF THICKNESS:	0.75"
CONSTRUCTION TYPE:	Face Frame	SHELF MATERIAL:	Plywood; Wood
HINGE STYLE:	Soft Close	FACE FRAME MATERIAL:	Maple
DOOR STYLE:	I Solid wood frame shaker door, reversible	SIDES MATERIAL:	Plywood
DRAWER DIMENSIONS 1:	N/A	BOTTOM MATERIAL:	Plywood
DRAWER DIMENSIONS 2:	N/A	BACK PANEL MATERIAL:	Plywood
DRAWER DIMENSIONS 3:	N/A	BACK BRACE MATERIAL:	Wood
DWR BOX MATERIAL:	N/A	TOE KICK INSET WIDTH:	N/A
DWR CONSTRUCTION:	N/A	TOOLS NEEDED FOR INSTALLATION:	Phillips Screwdriver Mallet Wood Glue
DWR GLIDE:	N/A	FASTENER TYPE:	Wood screws, various
FAKE DWR QTY:	0		
FAKE DWR LOCATION:	N/A		

WARRANTY:	1-Year limited warranty
LEGAL FOR SALE IN CALIFORNIA:	Yes
CARB COMPLIANT:	CARB Phase 2
TSCA TITLE IV COMPLIANT:	Yes



TYPE:
JOB:
ORDER CODE:
APPROVALS: