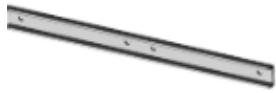




Bed Instructions

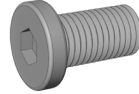
Hardware Included:



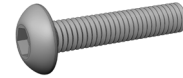
A - U-Shaped Center Support (2)



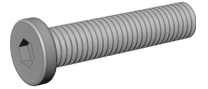
B - Headboard/ Footboard Brackets (4)



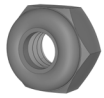
C - Short Bolt (8)



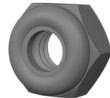
D - Medium Bolt (8)



E - Long Bolt (8)



F - Small Nut (8)



G - Large Nut (8)



H - Small Washer (16)



I - Large Washer (16)



J - Allen Wrench (1)

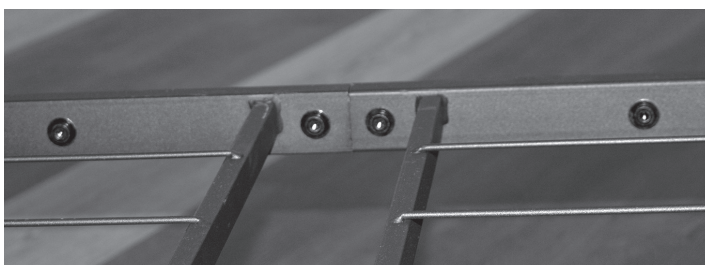
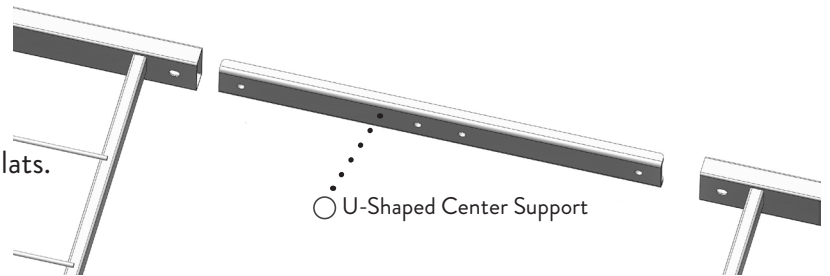


K - Box Wrench (1)

Instructions:

1.) Set up the two halves of the bed with the top of the bed facing up. The top of the bed is the side with the wire on the top of the slats.

3.) Connect the 2 sides of the deck by inserting a (A) U-shaped center support into the side tubes on the head and foot of the deck. The flat side of the U-shaped center support faces the inside of the deck and the open U shape points to the outside of the bed. Repeat on the other side.

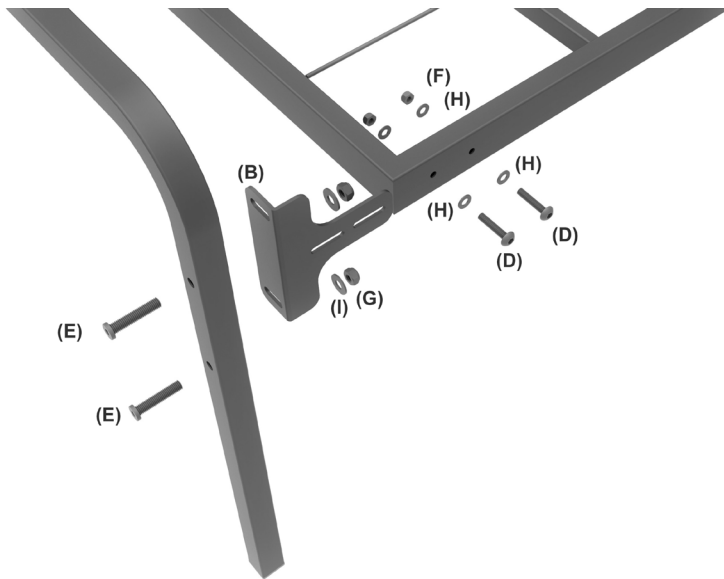


4.) Push the two halves of the bed together. Make sure that the bolt attachment holes line up.

5.) Insert a short bolt (C) and large washer (I) into the four overlapping holes on the inside of the connected center support and side rail. Do not tighten completely until both sides are aligned.

6.) Repeat on the other side. Make sure the sides are aligned and then tighten the bolts on both sides with the Allen wrench (J) and box wrench (K).

7.) Next, attach headboard/footboard (B) brackets to the bed. Insert a medium bolt (D) and small washer (H) into the slots on the side of the headboard/footboard bracket and through the holes on the side of the corner of the bed. Secure with a small nut (F) and small washer (H). If you plan to use the arms, do not tighten completely.



8.) If you are using arms, attach them to the headboard/footboard brackets (B). Insert a long bolt (E) through the top hole on the leg of the arm and into the top slot of the headboard bracket. Secure with a large nut (G) and large washer (I).

Attach the bottom hole the same way. Repeat with the other sides of the arms. Wait to tighten completely.

9.) Make sure all sides of the arms are the same distance from the bed frame, and that the arms line up with each other. You may need to loosen the bolts and adjust the headboard brackets. Once everything aligns, tighten the bolts completely.

Note: A rolling, stand-up bottom deck trundle can be used with this bed. When folded, the bottom deck will fit under the top deck as long as the bottom deck uses a mattress of up to 9" tall.