

Towel Bar Install Instructions



1. Loosen the screw on the stem of both brackets with the included allen wrench until bracket stems can be removed from the base of the brackets.



4. Install both silver back plates into the wall in the screw holes at a width to fit desired towel (we always recommend installing into a metal or wood stud).



2. Once bracket stem is removed turn nut (which was previously inside the stem) to the left until completely detached from the silver back plate, and repeat on other bracket.



5. Once silver back plate is installed into the wall, place metal end cap bases back over both silver back plates.

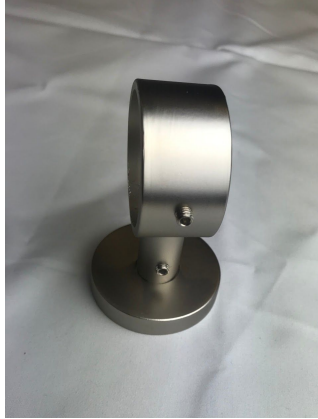


3. Once nut is removed the silver back plate (Above) and metal end cap base (Below) will be able to be separated.



6. Turn nuts back onto both screw heads (protruding part of the silver back plate) until as tight as possible.

Turn page over for additional instructions.



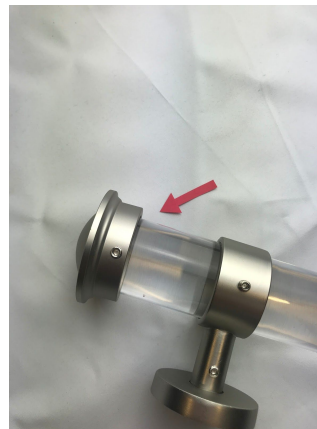
7. Slide bracket stems back over nut and tighten the screws on the stem (position the brackets and tighten so that when the rod is inserted that it will be in a horizontal position).



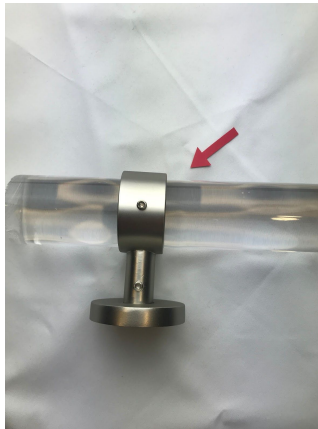
10. Loosen the screw on both end caps.



8. Loosen screw located at the hole of the brackets where the rod goes through.



11. Slide an end cap on each side of the rod and tighten the screw.



9. Insert rod through the hole in both brackets. Once rod is in desired position, tighten the screws located at the hole of both brackets.



FABRICS AND DRAPES