

Dining Table

IMPORTANT

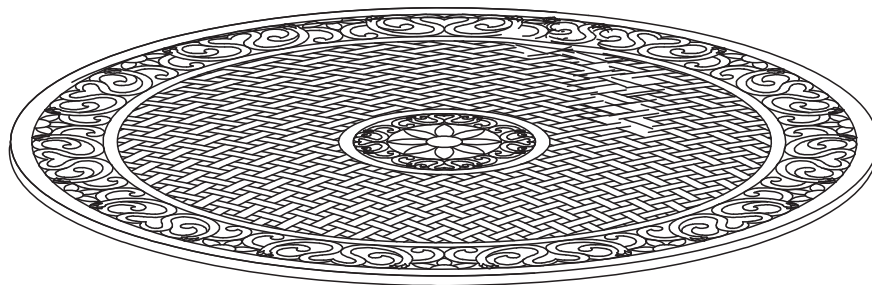
Carefully remove all the parts from the carton and place them individually on a soft cloth to prevent scratches or other damage.

Carefully and strictly follow these assembly instructions to ensure a completed product as designed.

Do not use power tools above 8 volts to assemble.

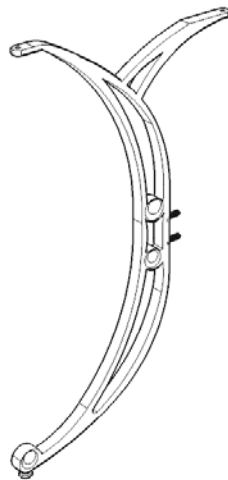


Part List



A.
Top
1 pc.

B.
Leg
4 pcs.



C.
Stretcher
1 pc.

Hardware List



Key Wrench
1 pc.



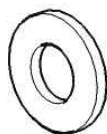
Spring Washer
16 pcs.(+1 extra)



Nut
16 pcs.(+1 extra)



M8x35
Bolt
8 pcs.(+1 extra)



Flat Washer
16 pcs.(+1 extra)



Nut Cap
16 pcs.(+1 extra)



Cover
1 pc.

Tool(s) required for assembly: Slotted screwdriver, Level

Home Styles Customer Service: www.homestyles-furniture.com,
servicedesk@homestyles-furniture.com, 888-680-7460, 877-831-0319

Assembly Instructions 2/2

IMPORTANT

- Use a soft cloth between these parts and the floor.
- Do not use power tools above 8 volts to assemble.
- Do not tighten all the bolts until each part is properly assembled.
- The unit must be level to work properly. Use the included adjustable levelers to level.
- Keep Key Wrench in a safe place as the bolts may need to be tightened up in the future.

STEP 1

Place Top (A)
upside down on a soft cloth.

Insert Bolts into
the pre-drilled holes of Top (A).

STEP 2

Attach two adjacent Legs (B)
to Top (A) with Flat Washers,
Spring Washers, and Nuts,
tightening the Nuts only half way.
(See Figure 1)

STEP 3

Attach Stretcher (C) to unit with
Flat Washers, Spring Washers and
Nuts, tightening the Nuts only half way.

Attach remaining two Legs (B) to unit
with Flat Washers, Spring Washers and Nuts.

Tighten all Nuts used in Step 2 and 3 with Key Wrench.

STEP 4

Cover all Nuts with Nut Caps.

Turn the table over to
its' upright position.

Cover the umbrella hole with Cover.
(See Figure 2)

To level the table, adjust the
adjustable levelers on the bottom of legs.
(See Figure 3)

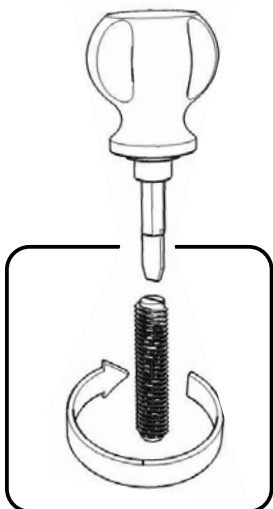
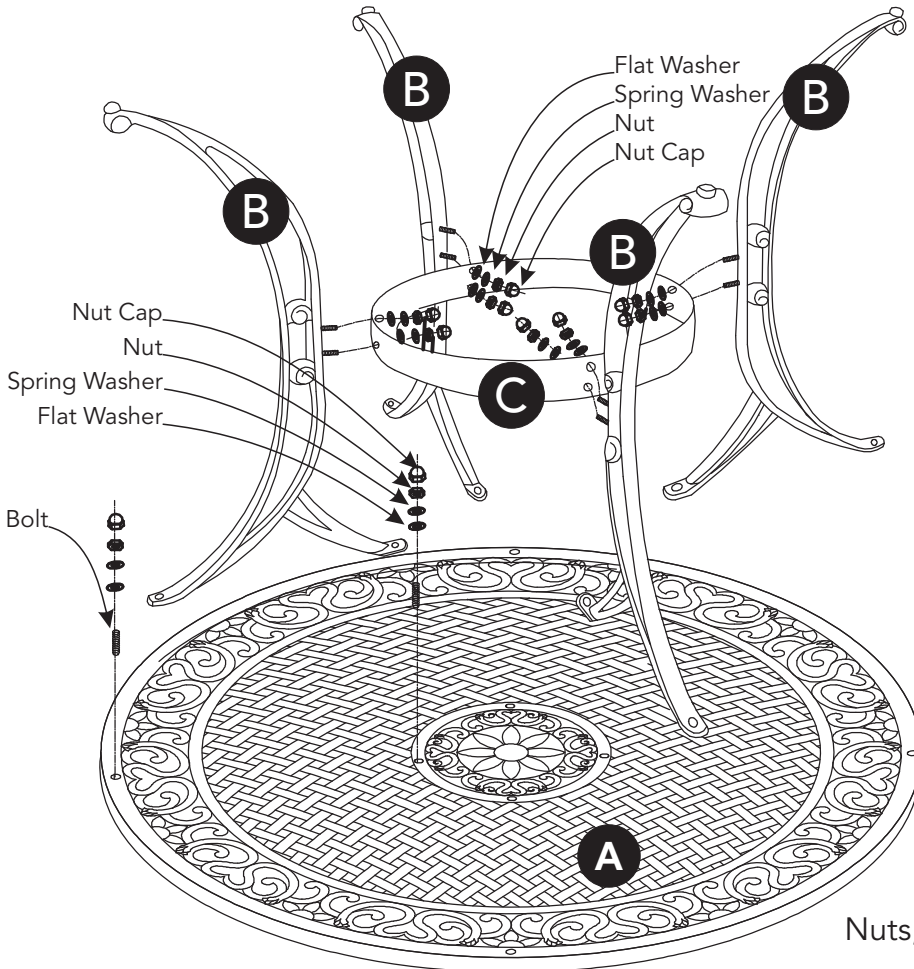


Figure 1

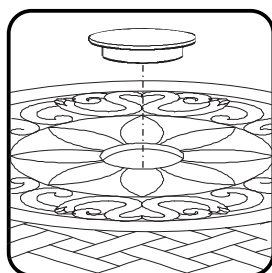


Figure 2

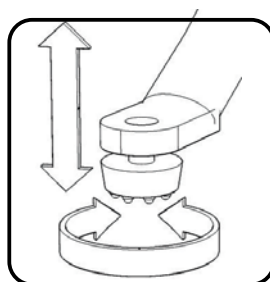


Figure 3

CARE INSTRUCTIONS

NEVER

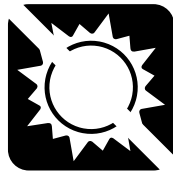
allow liquids to remain on furniture.
Absorption causes parts to warp
and split and finishes to delaminate.

NEVER

use glass cleaners on
finished furniture. Ammonia
chemically attacks the finish.



Do not use power tools
above 8 volts to assemble.
**PREVENT
CRACKING**



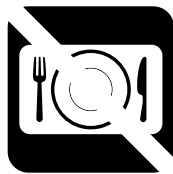
Do not place
in direct sunlight.
**PREVENT
FADING**



Do not write
directly on surface.
**PREVENT
MARKING**



Do not place hot
objects on surface.
**PREVENT
FINISH DAMAGE**



Do not use rubber
based placemats.
**PREVENT
DISCOLORING**



Do not use commercial
waxes and polishes.
**PREVENT
YELLOWING**

CLEAN

with a soft cloth moistened
in lukewarm soap and water.
Buff with a dry clean cloth.



Home Styles will provide replacements free of charge for missing or damaged hardware or parts within 30 days of purchase. Digital images of the defective parts may be required. If the product was not purchased from an authorized retail affiliate, Home Styles is under no obligation to provide replacement parts. Parts are not available for fully assembled items nor are parts available for sale. Replacements for missing or damaged hardware or parts may be requested at:
www.homestyles-furniture.com/customer-service/replacement-parts

Home Styles Customer Service: www.homestyles-furniture.com,
servicedesk@homestyles-furniture.com, 888-680-7460, 877-831-0319