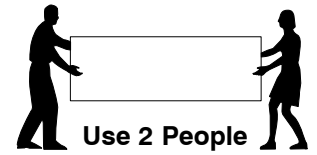
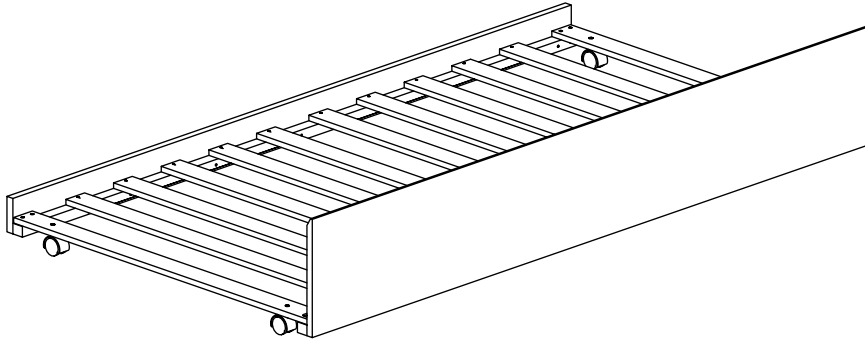


Daybed Trundle

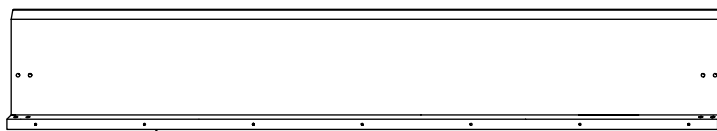
Assembly Instructions

1 Assembled View

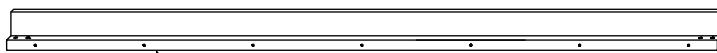


Note: Do not assemble using power tools. This can cause the bolts to be overtightened

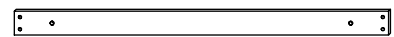
2 Parts List



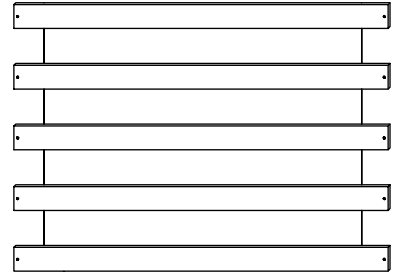
A Trundle Front Panel x 1



B Trundle Rear Panel x 1



C Trundle Support Rail x 2



D Set of Slats x 2

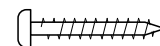
3 Hardware List



1 M6 x 40mm JCB
x 8



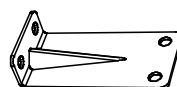
2 M6 x 15mm JCB
x 4



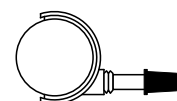
3 Wood Screw
(M4 x 32mm)
x 20



4 Allen Key
x 1



5 Metal
Bracket x 2

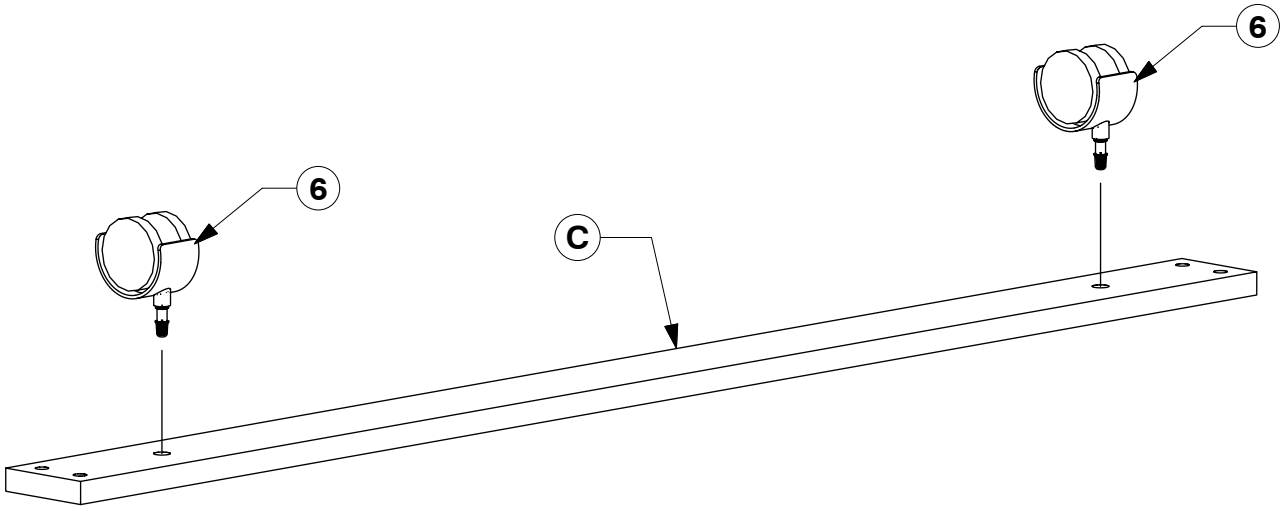


6 Wheels
x 4

Daybed Trundle

Assembly Instructions

- 4** Fit the Wheels (6) to the Trundle Support Rail (C).



- 5** Assemble the Set of Slats (D) & Trundle Support Rail (C) to the Trundle Front Panel (A) & Trundle Rear Panel (B).

