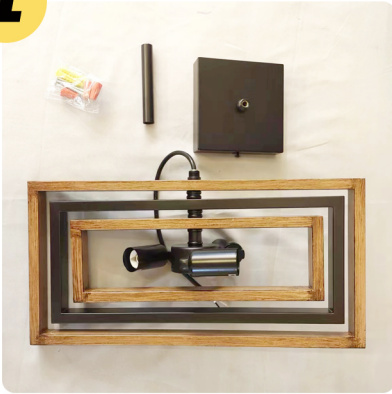


INSTALLATION GUIDE

1



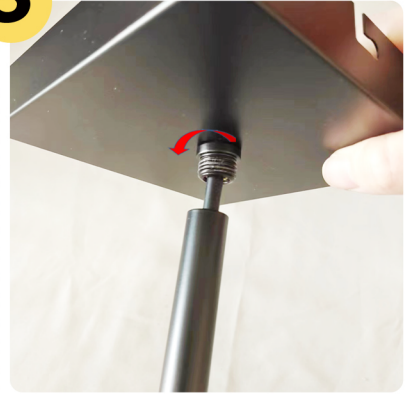
All accessory parts

2



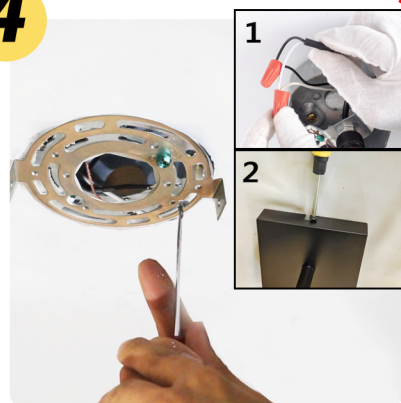
Screw the hanging tube to the lamp body.

3



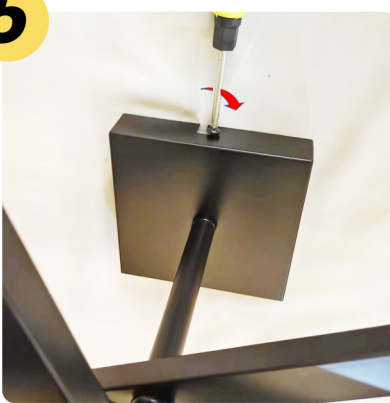
Screw the canopy to the hanging tube.

4



Fix the mounting bracket on the electrical box and connect the wire. Then fix the canopy by the screw .

5



Tighten the screws to fix the canopy to the mounting bracket.

6



Screw 3 E12 bulbs. The light fixture is ready to use.(Bulbs are not included.)

! WARNING

- TO AVOID THE RISK OF FIRE OR SHOCK, FIXTURE MUST BE INSTALLED IN COMPLIANCE WITH ALL APPLICABLE NATIONAL AND LOCAL ELECTRICAL/BUILDING CODES.
 - DISCONNECT POWER BEFORE RELAMPING OR WIRING THE FIXTURE.
 - If an existing fixture is being replaced, remove it and note to which of the wires in the outlet box the fixture was attached. DO NOT SEPARATE AND OTHER WIRES THAT MAY BE IN THE BOX. DO NOT DAMAGE THE INSULATION OF OLDER WIRING.
- In regular circumstances the Black wire will be the "Hot" lead wire and the WHITE wire will be the "Neutral" or "common" lead wire.
- A GREEN or BARE COPPER wire is the "Ground". In older buildings it is always good practice to reconfirm the polarity of the wiring.

! NOTICE

- The important safeguards and instructions outlined on this sheet cannot cover all possible conditions and situations that may occur. It must be understood that common sense, caution and care are factors that cannot be built into any product. Caution and care must be supplied by the person(s) installing, operating and caring for this lighting fixture.
- NOTE: For your safety be certain that the circuit breakers controlling outdoor lighting and equipment are GFI breakers.