



INSTALLATION INSTRUCTIONS

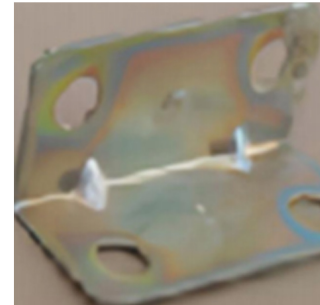
step1

First locate the two fully assembled cabinets, then take out two wooden spacer pads.



step2

Align the wooden spacers with the hole positions, then fix them inside the wooden spacers using the angle brackets supplied in the package.



step3

After placing the desktop flat and aligning it to the position, use angle iron to fix it above the two cabinets and the wooden pad.



step4

As before, after placing the baffles in position, simply fix them with angle iron. Installation is complete.

