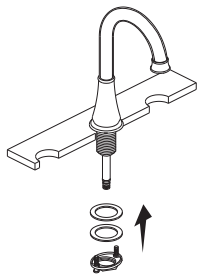


If you have any question or need help,
please visit **PARLOS®** website
<http://www.parlos.com>

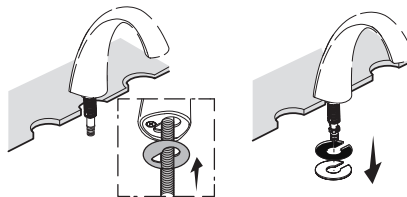


- 1** Fit the gasket onto the underside of the spout. Insert the spout through the sink opening. Slide the bracket and washer onto the stud. Thread the nut onto the stud and tighten.

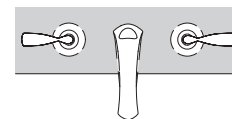
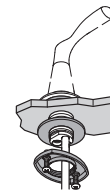


or

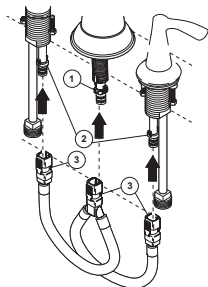
- 1** Place spout with gasket through mounting hole in sink. Secure spout with bracket and nut.
Note: If sink is uneven, use silicone under the gasket.



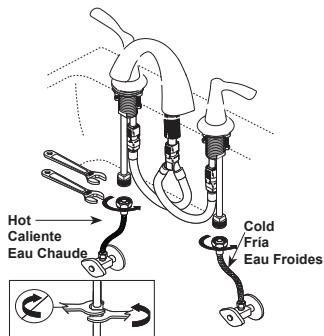
- 2** Loosely attach each handle with a washer and a threaded ring. Ensure the handles are in the OFF position. Align the handles as shown.



- 3** Align spout tube ① outlet tubes ② on quick connect hose ③. Push quick connect hose ③ firmly upward and snap onto tubes ① ②. Pull down moderately to ensure each connection has been made.



- 4** Connect To Water Supplies.



- 5** Turn on the water supplies. Check all connections for leaks.

