

9 Fin Oil Filled Radiator 2KW Black

REDB2oSBLKE



2 year
guarantee

Instruction Manual



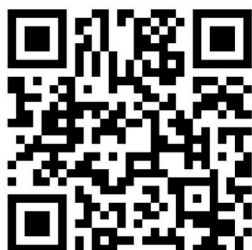
British engineering &
innovation since 1928

THANK YOU

FOR CHOOSING



We hope you love your product for many years!



Register your purchase

www.rediffusion.uk/pages/register-my-warranty

Scan QR code using mobile device

In line with our commitment to quality, your appliance is granted with a 2-year warranty cover. To optimize the benefits of this warranty, we suggest registering your product post-purchase, ensuring you get the most out of its features.

Please note: Warranty MUST be registered within 30 days of purchase. Any warranty registered after 30 days will be void.

CONTENTS

TECHNICAL SPECIFICATION	1
IMPORTANT SAFEGUARDS	2
HOW TO USE	3 & 4
CLEANING & CARE	5
DISPOSING OF THE PRODUCT	6
SPECIFICATION	7
CUSTOMER SUPPORT	8
GUARANTEE & WARRANTY	9

TECHNICAL SPECIFICATION

Power:	2000W
Voltage/Frequency:	220-240V~, 50/60Hz
Dimensions (CM):	54.5 (H) x 24 (W) x 40.5 (L)
Net Weight:	6.9 kg

This user manual can also be downloaded from our website.

www.rediffusion.uk

Important Safeguards

When using electrical appliances, basic safety precautions should always be followed, including the following:

1. Read all instructions before using your product.
2. The appliance is not intended for use by persons (including children) with reduced physical, sensory, or mental capabilities, or lack of experience and knowledge unless they have been given supervision or instruction concerning the use of the appliance by a person responsible for their safety.
3. Close supervision is necessary when any appliance is used by or near children or pets.
4. Children should not use or play with the appliance.
5. Use the appliance only for the intended use.
6. This product is intended for household use only and not for commercial or industrial use.
7. Make sure the power supply used corresponds to the rating label.
8. Do not run the cord under carpeting, throw rugs, runners, or similar coverings.
9. Arrange the cord away from high-traffic areas to prevent tripping hazards.
10. Do not operate the radiator with a damaged cord or plug, or after the malfunctions, has been dropped, or damaged in any manner.
11. If the supply cord is damaged, it must be replaced by the manufacturer, its service agent, or a similarly qualified person to avoid a hazard.
12. Avoid the use of an extension cord, as it may overheat and pose a risk of fire.
13. Use the radiator in a well-ventilated area. Do not insert or allow objects to enter any ventilation or exhaust openings.
14. To prevent a possible fire, do not block air intakes or exhaust openings in any manner. Do not use on soft surfaces, like a bed, where openings may become blocked. Use the radiator on flat, dry surfaces only.
15. Do not place the radiator near flammable materials, surfaces, or substances. Keep flammable materials at least 1 meter away from the front, sides, and rear of the radiator.
16. Do not use the radiator in areas where petrol, paint, or other flammable liquids are stored, such as garages or workshops.
17. Do not use the radiator in the immediate surroundings of a bath, shower, or swimming pool. Never locate the radiator where it may fall into a bathtub or other water container.
18. This radiator is hot when in use. To avoid burns and personal injury, do not let bare skin touch hot surfaces. If provided, use handles when moving the product.
19. Ensure that no other appliances are in use on the same electrical circuit as the radiator to prevent an overload.
20. This radiator contains a precise quantity of special oil. Repairs involving the oil container should only be carried out by the manufacturer or its service agent. Contact them in case of oil leakage.
21. Follow regulations concerning the disposal of oil when scrapping the appliance.
22. The radiator should not be used in a room with a floor area of less than 5 square meters.
23. The cord should not be placed near the hot surface of the appliance.

NOTE: It is normal when the radiator are turned on for the first time or when they are turned on after having not been used for a long period of time the radiator may have noise inside, This will disappear when the radiator has been on a short while.

How To Use

Key parts:

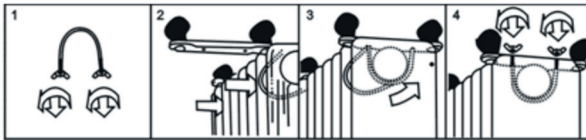
1. Carry handle
2. Power switch
3. Thermostat Knob
4. Cord storage
5. Radiator fins
6. Castor wheels



Assembly:

The radiator is packaged with the feet unattached. You must attach them before operating the radiator.

WARNING: Do not operate the radiator without the feet attached. Operate the radiator only in an upright position (feet on the bottom, controls on the top). Operating the radiator in any other position could create a hazardous situation.



1. Place the radiator body upside-down on a stable, scratch-free surface to prevent it from falling.
2. Unscrew the wing nuts from the U-shaped bolt provided. Attach the U-shaped bolt to the U-facing flange between the first and second fins (near the front cover).
3. Insert the threaded ends of the U-shaped bolt into the holes on the castor mounting plate to attach it to the radiator body.
4. Screw the wing nuts back onto the U-shaped bolt and fasten them securely. **Note: Do not over-tighten, as this may damage the radiator.**
5. Unscrew the spherical nut from the castor, align the shaft with the hole in the castor mounting plate, insert it, and screw on the spherical nut.
6. Repeat steps 2, 3, 4, and 5 at the rear of the radiator to mount the rear castors. **Note: The rear castors must be mounted between the last two fins.**

How To Use

How To Use:

1. Before using the radiator, ensure it is placed on a flat and stable surface. Damage may occur if it is placed on an incline or decline.
2. Set all controls to the OFF position, then insert the plug into a well-grounded socket outlet. Ensure the plug fits firmly.
3. Rotate the thermostat knob clockwise to the MAX position and switch the radiator on as follows: switch I for low heat, switch II for medium heat, and both switches for high heat.
4. When the room reaches the desired temperature, slowly rotate the thermostat knob counterclockwise until the pilot light goes out. The thermostat can remain at this setting. The radiator will automatically switch on and off to maintain the set temperature, ensuring efficient use of electricity.
5. To adjust the room temperature, rotate the thermostat knob clockwise to increase the temperature or counterclockwise to decrease it.
6. The radiator includes an overheat protection system that shuts off the radiator if parts become excessively hot.
7. To completely shut off the radiator, turn all controls to OFF and remove the plug from the socket outlet.

Cleaning & Care

This appliance requires little maintenance and contains no user-serviceable parts. Do not try to fix it yourself. Refer it to qualified service personnel if servicing is needed.

Cleaning

1. Always disconnect the appliance from the main supply before cleaning.
2. Allow the appliance to cool fully before cleaning.
3. Do not use abrasive cleaning products on this appliance.
4. Do not immerse the appliance in water or any other liquid.
5. Clean the outside of the radiator by wiping with a damp cloth and buff with a dry cloth

Storage

1. Always store the appliance in a dry place.
2. Never store the appliance while it is still plugged in.
3. To store the appliance, wind the cable around the bobbin and place the radiator in a clean, dry location.

Disposing Of The Product

Appliances bearing the symbol shown here may not be disposed of in domestic rubbish. You are required to dispose of old electrical and electronic appliances like this separately.

Please visit www.recycle-more.co.uk or www.recyclenow.co.uk for access to information about the recycling of electrical items.

Please visit www.weeeireland.ie for access to information about the recycling of electrical items purchased in Ireland.

The WEEE directive, introduced in August 2006, states that all electrical items must be recycled, rather than taken to landfill. Please arrange to take this appliance to your local Civic Amenity site for recycling, once it has reached the end of its life.

Correct Disposal Of This Product



This marking indicates that this product should not be disposed with other household wastes throughout the EU. To prevent possible harm to the environment or human health from uncontrolled waste disposal, recycle it responsibly to promote the sustainable reuse of material resources. To return your used device, please use the return and collection systems or contact the retailer where the product was purchased. They can take this product for environmental safe recycling.

Specification

Model identifier(s): REDB20SBLKE					
Item	Symbol	Value	Unit	Item	Unit
Heat output				Type of heat input, for electric storage local space heaters only (select one)	
Nominal heat output	Pnom	0.8274	kW	manual heat charge control, with integrated thermostat	NA
Minimum heat output (indicative)	Pmin	0.4567	kW	manual heat charge control with room and/or outdoor temperature feedback	NA
Maximum continuous heat output	Pmax, c	0.8274	kW	electronic heat charge control with room and/ or outdoor temperature feedback	NA
Auxiliary electricity consumption				fan assisted heat output	
At nominal heat output				Type of heat output/room temperature control (select one)	
At minimum heat output	elmin	NA	kW	single stage heat output and no room temperature control	No
In standby mode	elSB	NA	kW	Two or more manual stages, no room temperature control	No
				with mechanic thermostat room temperature control	Yes
				with electronic room temperature control	No
				electronic room temperature control plus day timer	No
				electronic room temperature control plus week timer	No
				Other control options (multiple selections possible)	
				room temperature control, with presence detection	No
				room temperature control, with open window detection	No
				with distance control option	No
				with adaptive start control	No
				with working time limitation	No
				with black bulb sensor	No

Customer Support

If you have any questions or concerns about your new product, please contact our helpful Customer Support Team:

Please have your Model No. available. This can be found on the front cover of this manual and on the products rating label.

We're here to help!



01274 752624



customerservice@rediffusion.uk



www.rediffusion.uk

Happy with your new product?

We would love to hear your suggestions and feedback about your experience.



Guarantee & Warranty



Register your purchase

www.rediffusion.uk/pages/register-my-warranty

Scan QR code using mobile device



**2 year
guarantee**

To make a warranty claim, do not return this appliance to the store.

Please call 01274 752624 or email customerservice@rediffusion.uk. For faster service, locate the model number on the rating label on your appliance. Alternatively, please scan the QR code above to be directed to our warranty registration page.

This product is covered by a 2 year warranty, please read the guarantee and service carefully and keep for future use.

Please Note: To maintain the validity of the warranty, it is imperative to register it within the initial 30 days of purchase. Any registration made beyond this time frame will result in the warranty being deemed void.

This warranty is valid for products purchased and used in the UK and serves as the sole express warranty for the product, replacing any other warranty or condition. The product is guaranteed to be free from defects in material and workmanship for a specified period from the original purchase date. The warranty covers the repair or replacement of defective components, with the responsibility for return shipping costs falling on the customer. If the original product or component is unavailable, a replacement of equal or greater value will be provided.

Exclusions to this warranty include glass, filters, normal wear, improper use, accidents, alterations, abuse, or misuse. The warranty is applicable only to the original consumer purchaser or gift recipient, requiring proof of purchase for warranty claims. It becomes void if the product is used for purposes other than single-family household use or operated outside specified voltage and waveform requirements. The warranty disclaims all claims for special, incidental, and consequential damages, limiting liability to the purchase price. Every implied warranty, except where prohibited by law, is disclaimed, and any statutory warranty or condition is limited to the duration of this written warranty.



Capture, tag, and win with
#Rediffusionfamily



@Rediffusionuk

Tag us with **#Rediffusionfamily** on social media. We love seeing your amazing home transformations so much that we regularly feature our favourites and even host exclusive giveaways to show our online family some extra love!

Rediffusion

Belfry House, Roydsdale Way,
Bradford, BD4 6SU
01274 752624
www.rediffusion.uk

Illustrations may differ from actual product. We are consistently striving to improve our products, therefore all specifications contained herein are subject to change without notice.