

ASSEMBLY INSTRUCTION

Item No: N36E-9571-11

Description: SQUARE COUNTER TABLE



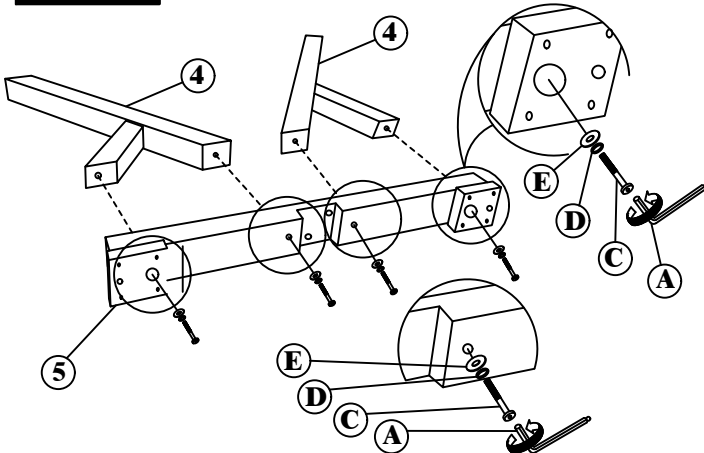
IMPORTANT NOTE :

- Place all wooden parts on a clean and smooth surface such as a rug or carpet to avoid the parts from being scratched.
- Check to be sure that you have all parts and hardware.
- Remove all wrapping materials, including staples & packing straps before you start to assemble.
- Do not tighten all screws/bolts until all completely assembled.
- Keep all hardware parts out of reach of children.

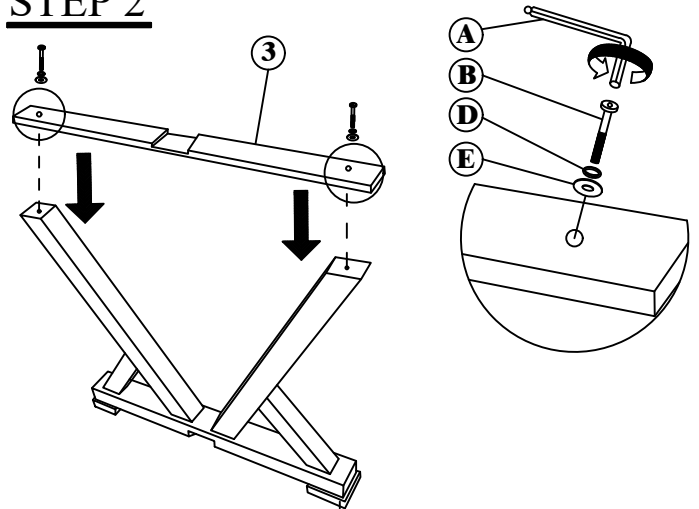
| PARTS LIST | | |
|------------|----------------------|-------|
| NO. | COMPONENT | QTY. |
| 1 | TABLE TOP | 1 PCS |
| 2 | UPPER MOUNTING PLATE | 1 PCS |
| 3 | LOWER MOUNTING PLATE | 1 PCS |
| 4 | LEG ASSEMBLY | 4 PCS |
| 5 | UPPER LEG BASE | 1 PCS |
| 6 | LOWER LEG BASE | 1 PCS |

| HARDWARE LIST | | |
|---------------|-------------------------|--------|
| NO. | DESCRIPTION | QTY. |
| A | ALLEN KEY M4 x 100MM | 1 PCS |
| B | JCBC BOLT M6 x 35MM | 10 PCS |
| C | JCBC BOLT M6 x 70MM | 8 PCS |
| D | SPRING WASHER M6 x 13MM | 17 PCS |
| E | FLAT WASHER M6 x 19MM | 17 PCS |
| F | ADJUSTABLE LEG LEVELER | 4 PCS |

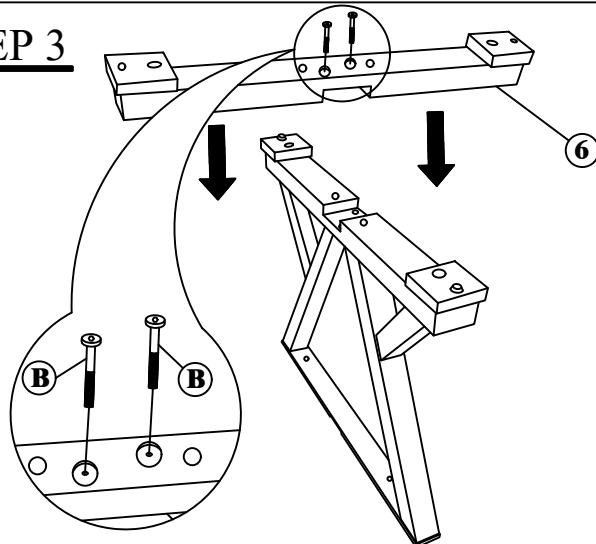
STEP 1



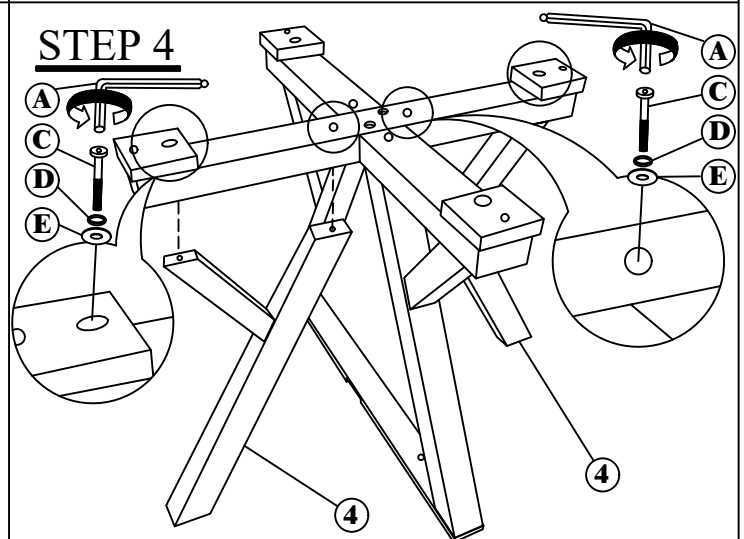
STEP 2



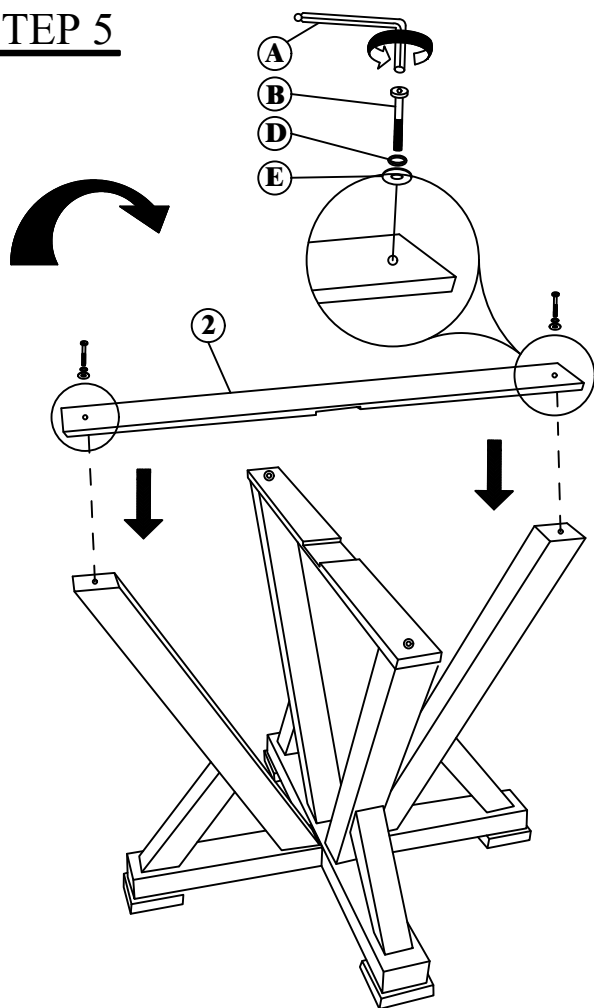
STEP 3



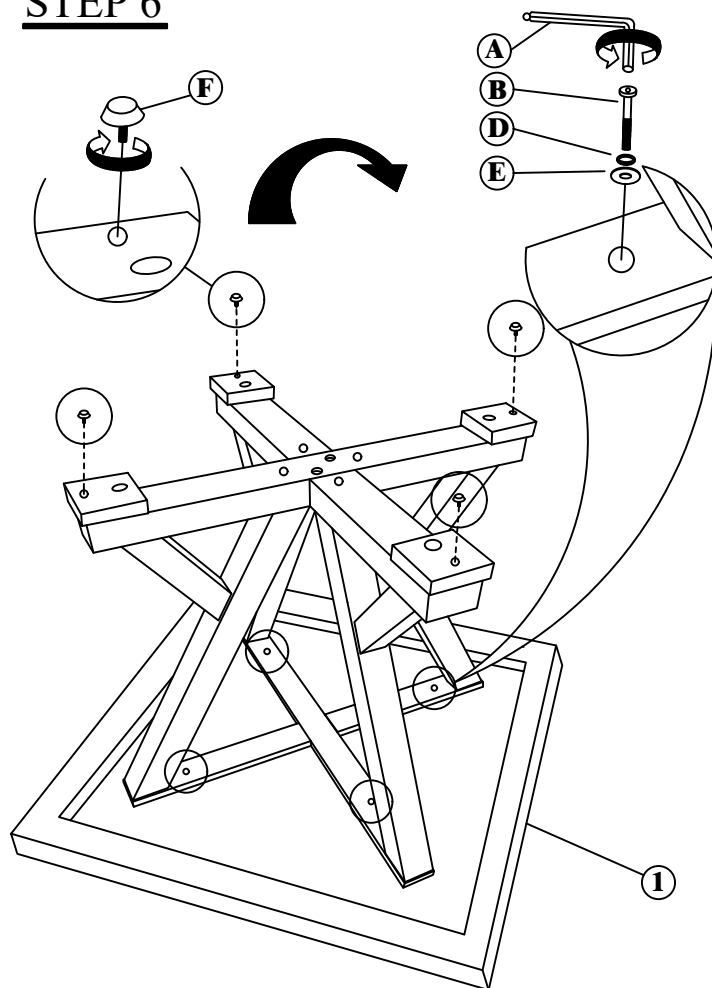
STEP 4



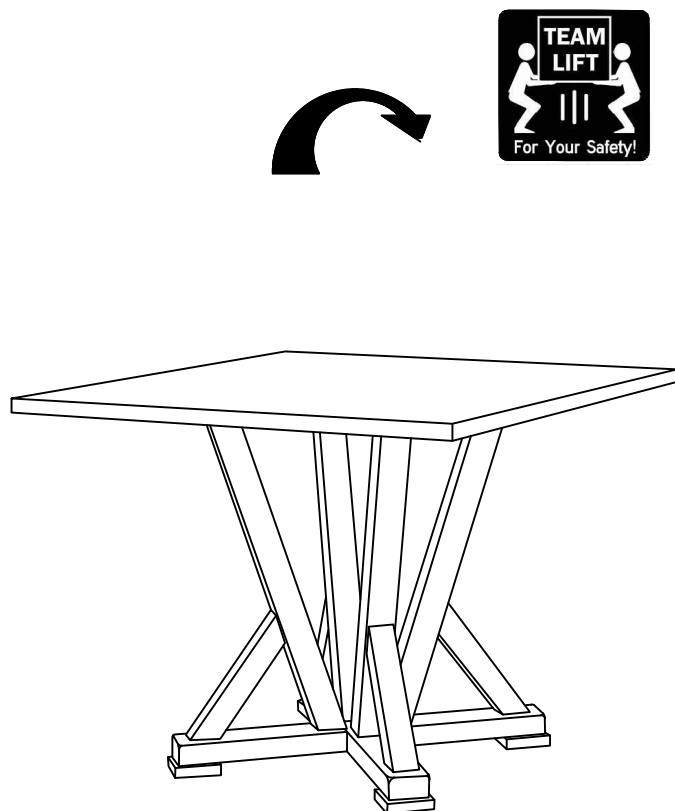
STEP 5



STEP 6



STEP 7



STEP 8

