

USER MANUAL

COFFEE MAKER

KC211



HOUSEHOLD USE ONLY



Manufacturer: Shenzhen Foduosi Trading Co., Ltd.
Address: 1403, Block 4, Haixuan Plaza, No.89 Jinlong Road,
Luogang Community, Buji Street, Longgang District, Shenzhen
Facebook Page: <http://www.facebook.com/foherehome>
Email: service@fohere.com

MADE IN CHINA



Before operating the appliance, please read this manual and all the safety instructions thoroughly and retain it for future reference.

CUSTOMER SERVICE DEPARTMENT

Thank you for supporting our brand. If you have any questions, please choose the way you prefer to contact the service team, the service team will get back to you within 24 hours on the business day.

1. Official E-mail Address: service@fohere.com
2. Log in Amazon Account - Follow the steps to contact.
 - ① Click "Orders" - Go to the specific product page
 - ② Click the name of the seller(after "sold by")
 - ③ Click "Ask a question"-

Steps figure below:

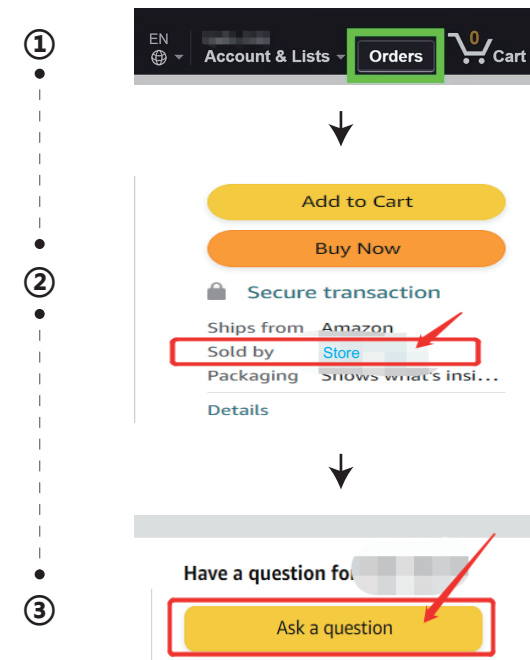


TABLE OF CONTENTS

Product Declaration	01
Safety Information	01
Know Your Coffee Maker	02
Product Parameters	03
Instructions for Operating the Whole Machine	03
Explanation of Indicator Light Status	08
Cleaning and Maintenance	08
Trouble Shooting	10

PRODUCT DECLARATION

1. Please read the contents in this manual carefully to ensure that you can use this product correctly and safely.
2. Please use the correct input power supply. Abnormal power supply input will cause irreparable damage to this product, and even endanger the safety of you and your family. The company will not assume any responsibility for this, and the warranty will automatically become invalid.
3. This product is a coffee machine. Only potable water can be used in the water tank. Semi-solid or solid substances cannot be used.
4. Do not disassemble this product and accessories without permission, and the company will not be responsible for the damage caused by it.
5. If the power cord is damaged, in order to avoid danger, it must be replaced by the manufacturer, its maintenance department or similar professionals.

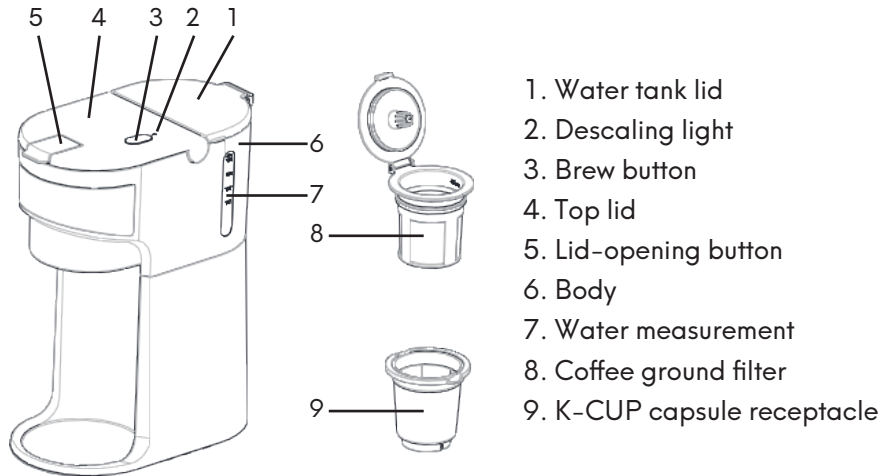
SAFETY INFORMATION

Note: Please read and observe the following instructions and warnings carefully before using this product. Our company will not be responsible for the consequences caused by incorrect use or failure to follow the relevant instructions of this product.

1. Check whether this machine is damaged during transportation. If there is any damage or missing parts, please do not use them, and inform the carrier or distributor.
2. Warning! The power cord plug should be firmly contacted with the socket, otherwise, it may lead to fire.
3. When plugging in the power plug, the power plug should be kept clean, and there should be no water or other liquid in both hands to prevent electric shock.
4. When using this product, please put it in a stable place out of the reach of children to prevent burns.
5. Unauthorized disassembly, modification and violent operation of this product are strictly prohibited.

6. Do not pull the power cord, press wire or let it hang down along sharp objects or sharp edges, and stay away from heat sources and wet sources.
7. Do not place this product on the surface or beside a heat source, such as an electric oven, bread maker, etc.
8. Do not touch hot surfaces and water outlets when using appliances.
9. To avoid burns, it is forbidden to touch the temperature or steam with your hands or any part of your body.
10. Please do not let people (including children) who are not physically sound, feel or mentally handicapped or lack relevant experience and knowledge use this product.
11. Do not use the product for a long time, or before cleaning the product, please unplug the plug and start cleaning after the standby body cools down.

KNOW YOUR COFFEE MAKER



PRODUCT PARAMETERS

Product name:	Hot & Iced Coffee Maker
Product model:	KC211
Temperature requirement:	Room temperature: 68-71°F Water temperature: 68-77°F
Specifications:	AC 120V 50/60Hz 1000W
Product size:	L7.83 * W4.33 * H9.48 inch
Water tank capacity:	350mL/12oz Max
Product net weight:	2.09lb
Power cord specifications:	SPT-2 18AWG

INSTRUCTIONS FOR OPERATING THE WHOLE MACHINE:

Before Brewing:

1. Remove the coffee maker from the packaging and check the accessories against the list.

2. Initial cleaning of the coffee maker

Fill the water tank, plug in the machine, press the brew button once, the white light is on, after about 2 minutes, hot water will flow out. The first cleaning is complete when the light turns off.

3. Tips for coffee grounds and coffee mug:

- 1) Using a cup with a minimum height of 5.1 inches is recommended to avoid splashing.
- 2) It is recommended to use medium-coarse ground coffee for brewing.

Before Brewing:

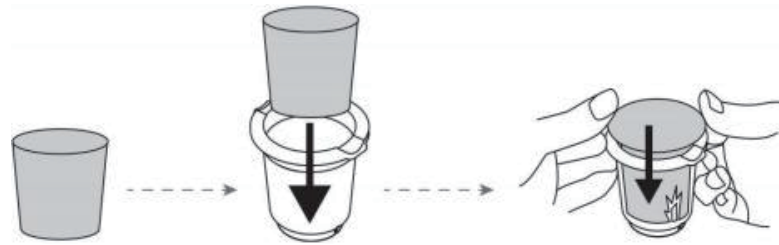
1. Install the K-CUP capsule receptacle, or install the coffee filter.

1.1 Install the American K-CUP capsule receptacle:

The the American K-CUP capsule size is $\text{Ø}19.88 \times 17.32$ inch:



Remove the receptacle, insert the K-cup capsule into the it, press to pierce the bottom, and close the lid securely.



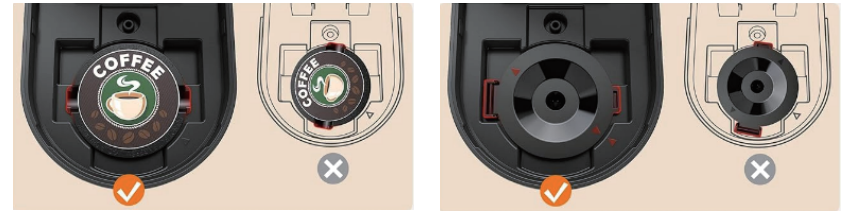
Insert the K-Cup capsule receptacle into the brew chamber in the correct direction.



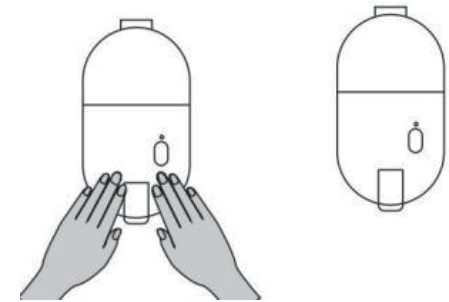
04

Note:

The handle of the holder or basket should be placed horizontally, otherwise the top lid cannot be closed properly.



Close the lid, press down and tighten it by hand.



1.2 Install the coffee ground filter:

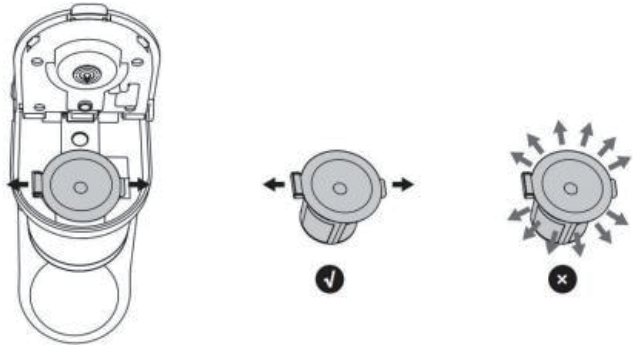
Spoon approximately 20g of ground coffee into the coffee filter, then close the lid.

NOTE: Do not exceed the MAX line on the filter.

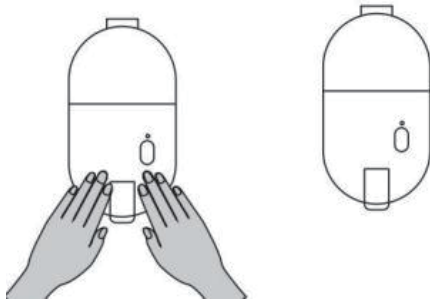


05

Insert the filled coffee filter into the brew chamber, ensuring it aligns with the arrow on the chamber.



Then close the top cover, and press down and tighten it with your hands:



2. When plugged into the 120V AC power supply, the white light will flash 0.5S/0.5S for three times for self-test.

3. Place a mug or travel cup with a height of less than 5.1" (130mm) on the base.

4. Brewing coffee

1) How to make hot coffee?

- Press the button once, the white light will turn on, indicating that hot coffee is being brewed;

2) How to make iced coffee?

- Fill the mug with ice cubes, then quickly press the button twice. The blue light will turn on, indicating that iced coffee is being brewed.

The brewing process will stop automatically.

NOTE:

Do not remove the coffee mug from the base until the brew indicator light turns off completely.

EXPLANATION OF INDICATOR LIGHT STATUS

White light flashing 3 - times	Self-test for machine power-on
White Indicator light	Brewing hot coffee
Blue Indicator light	Brewing iced coffee
Red Descaling Light	Descal mode
Red Indicator Light Flashes (0.25s/0.25s)	NTC failure
White Indicator Light Flashes (0.25s/0.25s)	Water shortage or the lid not closed properly

CLEANING AND MAINTENANCE

NOTE:

1. Before cleaning, ensure the power supply is disconnected and the plug is removed.
2. For optimal performance of your coffee maker, thoroughly clean the machine after each use as necessary.
3. Avoid washing any parts of this coffee maker in the dishwasher.
4. Do not submerge the main unit in water for cleaning.

Cleaning:

1. Initial cleaning or cleaning after periods of non-use: Add water to the water tank and brew a cup of water to clean the product.
2. Descaling mode: When the coffee machine has completed more than 300 cycles, the red descaling light will turn on, signaling the need for descaling. Fill the water tank with water and descaling solution up to the MAX level (recommended ratio of descaling agent to water is approximately 1:20). Long-press the button to start the descaling process. The coffee maker will descale until the process is complete and the light turns off.
3. Surface cleaning of the product: After each use, wipe it clean with a dry cloth.

TROUBLE SHOOTING

Symptom	Cause	Solutions
Water is leaking from the water tank.	The water level in the tank exceeds the maximum level.	The water level in the tank should be within the minimum and maximum levels.
Water or coffee is leaking from the lid of the brew chamber.	The water pipe inside the machine is damaged.	Contact Amazon for a replacement.
	The capsule is not properly located.	Ensure that the coffee capsule is properly installed.
	The nozzle is clogged.	Clean the nozzle with a pin and clean it regularly.
The coffee machine is not working.	No heating - the heating boiler is broken or the electric control board is faulty.	Contact Amazon for a replacement.
	The indicator is off. The power plug may not be inserted properly.	Ensure that the power plug is inserted properly.
	The power cord is damaged, or open circuit, PCBA failure	Contact Amazon for a replacement.
	Red light is on - Descaling mode.	Please descale the coffee machine.
Smell in the coffee machine	Not cleaned properly after use or used the non-fresh water.	Clean the machine several times after use and use fresh water.
K-Cup exploded	Not using the capsule receptacle.	Always use the removable capsule receptacle when brewing with K-Cups.