

Product Name:	Outdoor Lighted Polyresin Fountain with Planter, Decorative Garden Accent
SKU #:	WHF2806

Thank you for purchasing this LuxenHome product. This product has been manufactured with the highest standards of safety and quality.

PLEASE READ ALL INSTRUCTIONS BEFORE ASSEMBLY.

Unpack all parts from the packaging inside the carton to ensure there are no missing or damaged parts. If any parts are missing or damaged, do not attempt to assemble or use the product.

Carton Contents:

Description	Quantity
Fountain Top	1
Fountain Base	1
Pump	1

Compatible Pumps for this fountain:

Pump Model No.
JR250/LED
AP333/LED
YH300-70/LED

Tools required for assembly: No tools required.

Assembly Instructions:

1. Unpack the contents of the box and check to make sure that all items are accounted for and in good condition.
2. Remove the pump from the package and untie the power cord.
3. Select a flat, level surface for the assembly and final location of your fountain.

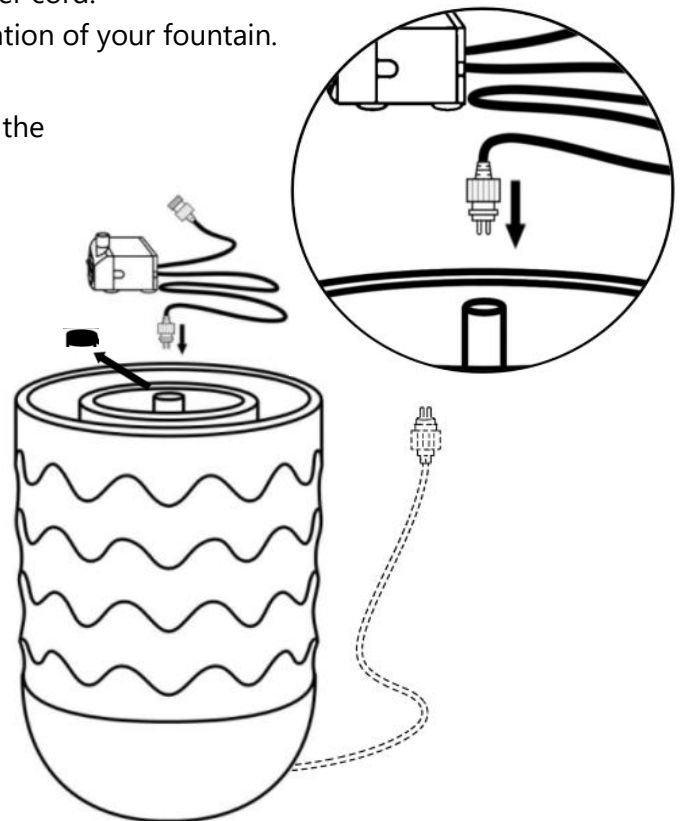
Notes: Before you start assembling, please read through all the assembly steps first.

Having an overall idea of the process will make the actual assembly much easier.

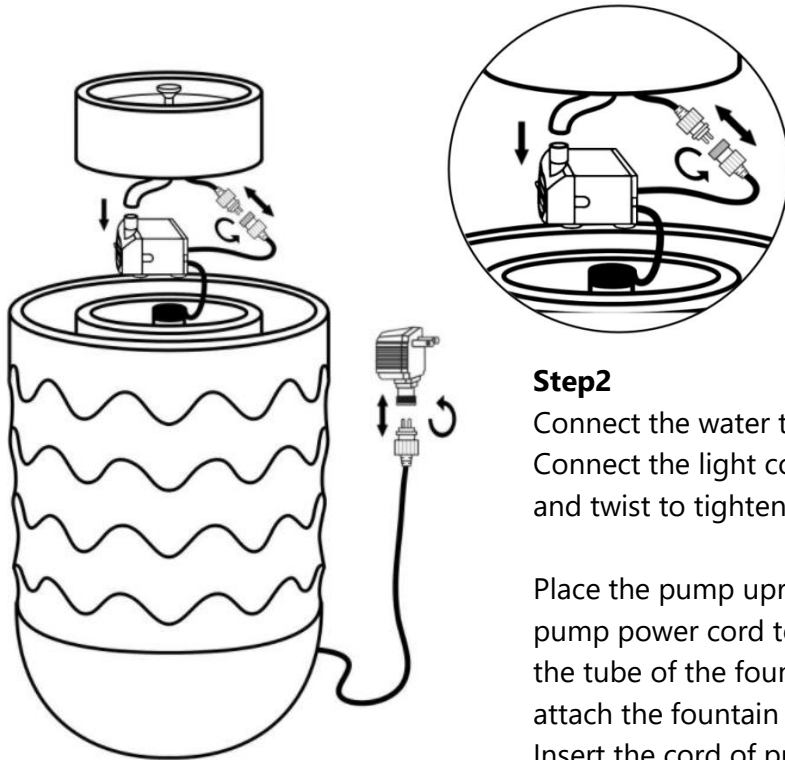
Step1

Remove the black plastic cap on the tube of fountain base and keep it for following steps.

Insert the pump cord (male plug with two pins) into the tube of fountain base and gently pull the cable out from the bottom of the base, press the cable into the groove at the bottom to keep the product balanced.



Product Name:	Outdoor Lighted Polyresin Fountain with Planter, Decorative Garden Accent
SKU #:	WHF2806



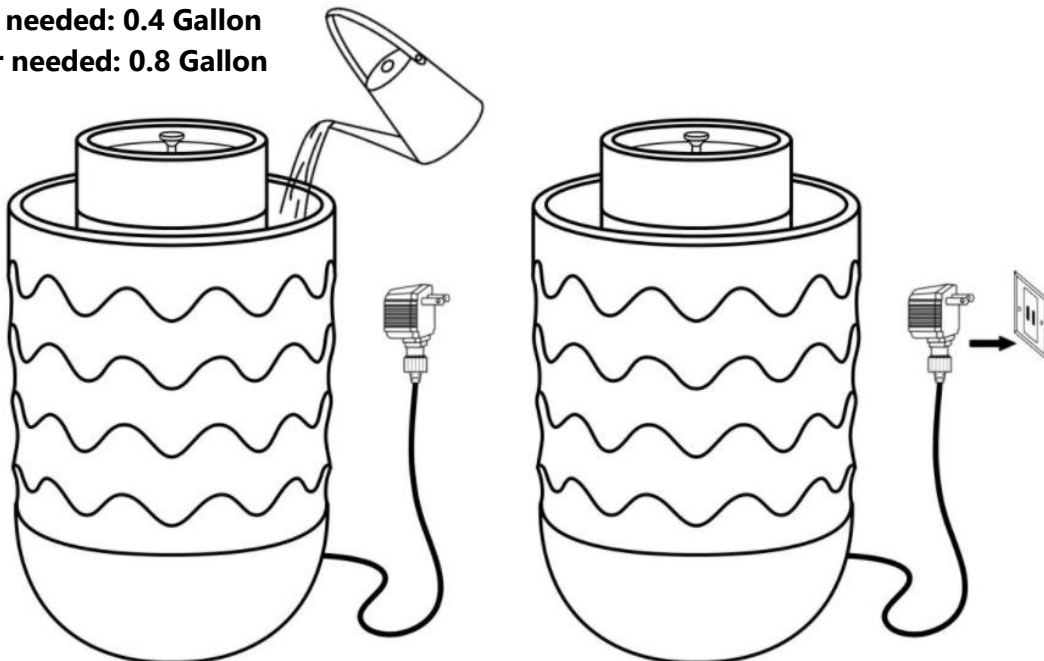
Step2

Connect the water tube from the fountain top to the pump. Connect the light cord from the fountain top to the pump cord and twist to tighten.

Place the pump upright inside the center bowl, gently pull the pump power cord to adjust it to a proper length, then cover the tube of the fountain base with the black plastic cap, and attach the fountain top to base.

Insert the cord of pump into power plug, twist to tighten.

Min. Water needed: 0.4 Gallon
Max. Water needed: 0.8 Gallon



Step3

Add clean water into the reservoir. The water level should be approximately 1.2 inch lower than the edge of the reservoir. Ensure the pump in your fountain is completely submerged in the water.

Step4

For safe operation, connect the pump into a properly Grounded GFCI. If installed properly, water flow in the fountain will begin shortly.

Product Name:	Outdoor Lighted Polyresin Fountain with Planter, Decorative Garden Accent
SKU #:	WHF2806

The water flow position of the pump is set by default at the maximum value to help the water flow smoothly, then adjust to your preferred level as needed. (Always disconnect before handling the pump.)

Note: The diagram is for illustrative purposes only.

Please do not use the electrical plug during wet weather conditions.

Please note: On first use, there may be air in the pump. It may take several minutes until all the air escapes.

And please:

1. Check the area around your fountain on a regular basis to ensure that there is no leakage.
2. Please refresh the fountain with water each week to ensure it in good condition.
3. Do not add any harmful chemicals to the water as it may alter the finish.

MAINTENANCE OF YOUR PUMP:

- Keep the water clean – clean water will prolong the life of your pump.
- Use a pre-filter on your pump if available.
- Regular cleaning of the pump will be necessary depending on the environment in which it is operated. Clean the pump when it is visibly soiled or when a noticeable drop in performance is detected. **Failure to clean the pump will result in overheating of the pump and the voiding of the warranty!**
- Before cleaning, always disconnect the pump from the power source.
- Disassemble the pump by removing the inlet screen & the impeller housing. Remove the impeller/rotor assembly by gently pulling on the impeller blades. Use a soft cloth or brush to clean the area inside the pump where the impeller/rotor assembly was. Clean the inlet screen, impeller housing & impeller in warm soapy water. Reassemble the pump and inspect it for proper operation.

MAINTENANCE OF YOUR FOUNTAIN:

- Unplug the pump from electric power before servicing, cleaning, or moving.
- Keep water clean - using clean water will reduce mineral deposits and improve water clarity.
- Clean the fountain periodically to prevent mineral deposits and contamination. Use warm soapy water and a stiff brush for heavily stained surfaces. **Do not use harsh chemicals, which will damage the finished surface and void the warranty.**
- Add clean water periodically to ensure the pump is fully submerged.
- Disconnect the power and empty the basin if the fountain is not used for an extended time.
- If installed outdoors and in a frozen area of the country, ensure all water is removed, and the unit is completely dry. **This product is NOT to be operated below 41°F (5°C). Freeze damage may occur.**

 **Special Warnings and Cautions:**

CAUTION:

- The pump has been evaluated for use with water only.

Product Name:	Outdoor Lighted Polyresin Fountain with Planter, Decorative Garden Accent
SKU #:	WHF2806

- Do not use the pump in water exceeding 35°C / 95°F.
- Do not use the pump in flammable liquids.
- Do not use the pump for industrial purposes.
- Do not use the pump in vehicles, ships, aircraft, or swimming pools.
- Do not use the pump in a location where special conditions prevail, such as a corrosive or explosive atmosphere (dust, vapor, or gas).
- Do not let the pump run dry. The pump must be completely submerged for proper operation and cooling.
- Do not lift the pump by its power cord.
- Keep the plug dry. Do not expose the plug to water or steam.
- Before connecting to the power source, ensure the pump is assembled and completely submerged in water.
- Check the water level regularly to ensure the pump is completely submerged during operation. The pump should be fully submerged during operation. Do not add water while operating the product. Always disconnect the pump from the power source before adding water.

WARNINGS:

- To reduce the risk of electric shock, connect only to a properly grounded, grounding-type receptacle.
- To reduce the risk of electric shock, use the pump only for portable, self-contained fountains no larger than 5 feet in any dimension.
- Do not exceed the voltage shown on the pump.
- Always disconnect the pump from the power source before beginning maintenance or work on the pump or fountain.
- Inspect the power cord for damage before installation and maintenance. Replace the entire pump if the damage is found.
- For pumps with a 3-prong, grounded type plug, do not remove the grounding pin from the plug on the power cord.

TIPS AND TROUBLESHOOTING:

1. Ensure the pump's flow control switch is set to maximum (+) before operating. Once the flow is established, the pump can be adjusted downward to the desired level.
2. If the pump operates without flow, check to ensure the pump is fully submerged.
3. If the pump operates without flow, check the supply tubing for kinks and correct it.
4. If the pump operates, but there is no flow, and if the pump is submerged and there are no kinks in the supply tubing, lift the pump from the water. Remove the supply tubing at the pump outlet and clean tubing inside and out if necessary. Then, reset the pump in water (outlet side up) and re-attach the supply tubing once water begins to flow.