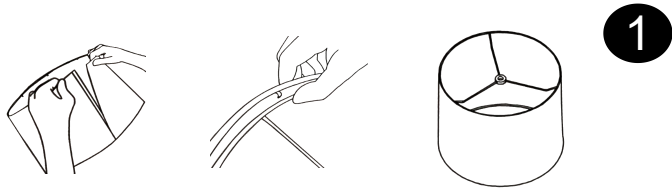
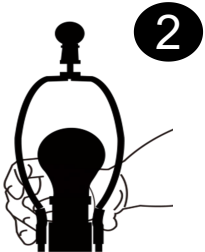


To better **protect the lampshade** from **damage** during transportation, it arrives **rolled**, and you may notice **wrinkles** or **creases** on the edges when you first put it up. Do not be alarmed; this is **not a permanent** issue or defect. Be prepared for the possibility that it may take **several days or weeks** for the lampshade to **regain its natural shape**.

First, assemble the shade by **attaching the sides together** using Velcro. Align the frame with the edge of the lampshades and secure it in place using fasteners. Repeat the process for the second frame. Ensure that the frames are **firmly attached** and the lampshades are **tightly stretched**.

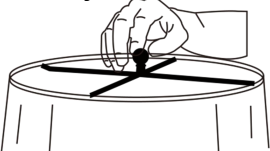


Install the harps onto the lamp base by positioning them over the sockets. Next insert the bulb into the socket **and rotate it clockwise** until it is **securely in place**.(bulbs are not included).



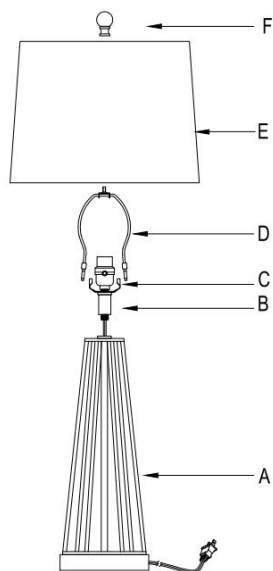
3
adjustment

Once the lampshade is positioned correctly, screw the finial into place to hold it securely.(If the lamp shade is slanted,adjust the base of the finial to make it level).



INSTRUCTION MANUAL

Applicable bulb type:
A19,A60,T45,ST58...(Excluding bulb)



- 1.Unpack all parts from cartons carefully.
- 2.Carefully pull-out excess power cord from the lamp base while assembling to prevent the cord from becoming twisted.
- 3.Tighten the lamp socket(B)into the body (A) until tight.
- 4.Place the harp(D) onto the saddle(C).
- 5.Place the shade(E) onto the harp(D).
- 6.Tighten the finial(F) into the harp (D) until tight.

CAUTION : Risk of fire



Please read all instruction carefully.Before you proceed to install,make sure that the power supply is turned off and remains off until installation is completed.

PARTS INCLUDED

Code	Part Description	QTY
A	Body	1
B	Lamp socket	1
C	Saddle	1
D	Harp	1
E	Shade	1
F	Finial	1