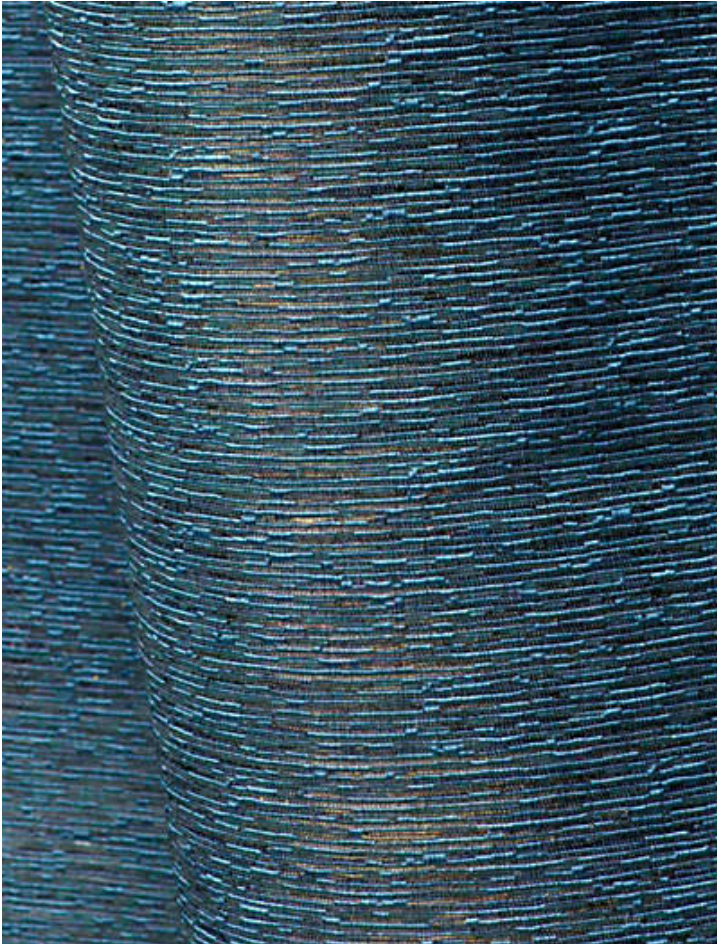


KIMONO

CHARDON • H0 0007 0554

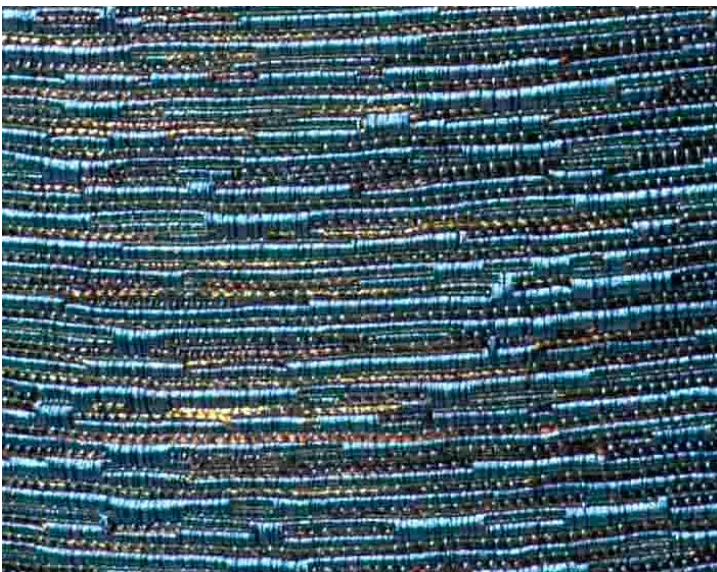
Jacquards / Wovens from the L'art Et La Matiere Collection by Lelièvre



APPROX. MATERIAL 54.75" / 139.07 cm
WIDTH
APPROX. REPEAT . . . HORIZONTAL 0" / 0 cm
VERTICAL 0" / 0 cm
CONTENT 49% POLYESTER 34% NYLON 17% COTTON
SUGGESTED USE . . . HEAVY DUTY MULTIPURPOSE
PERFORMANCE / . . . HEAVY DUTY ABRASION
CONTRACT
ABRASION 45,000 MARTINDALE
MADE IN FRANCE
STOCKED IN SUPPLIERS WAREHOUSE EUROPE
DESIGN TEXTURE
SCALE PLAIN / SOLID

DESIGN INSPIRATION

Kimono is a contemporary design, a delicate combination of precious fibers united for an unstructured ribbed ottoman. A natural palette coordinates with the other designs in the collection. The fine appearance of the construction contrasts with strength for upholstery.



DETAIL IMAGE