

# INSTALLATION INSTRUCTIONS AND WARRANTY INFORMATION FOR LED PANEL LIGHT

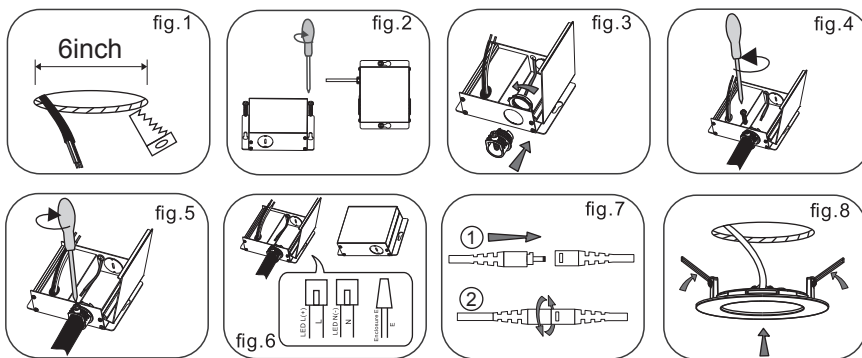
## CONSTRUCTION:

Round 4" fixtures with integral LEDs. Isolated Class 2 external driver factory installed inside junction-box. One driver for every fixture required. Power Factor>0.95.LED fixture and driver are TYPE IC rated-approved for direct contact with insulation. Pot light housing is NOT required even for insulated ceilings.

Driver	Model	COB-DOWNLIGHT-6I-XXK
	Input	120V AC 60Hz
	Output	36V 360mA
	Lamp Life	50000 Hours
	Approved Location	Damp
	Operating Temperature	-20°C~45°C
Light	Energy used	15W
	Luminous Flux	1000LM
	Equivalent to:	100W halogen
	CCT Options	2700K/3000K/3500K/4000K/5000K/6500K
	Beam Angle	110 Degree
	CRI	Ra>80
Mounting Cuthole	OD	7-1/16"(180MM)
	ID	6"(152.4MM)
	Thicknss	1/2"(13MM)
	Cut out	6-1/16"~6-3/16"(155±2MM)

When"XX" represents CCT.When XX=27 represents 2700 K ;When XX=30 represents 3000K ;When XX=35 represents 3500K ;When XX=40 represents 4000K ;When XX=50 represents 5000K ;When XX=65 represents 6500K.

## INSTALLATION:



1. Cut off power before installation. Drill a hole on the ceiling(fig.1).
2. Install the junction box (fig.2)(fig.3)(fig.4)(fig.5) , and connect the lamp driver(fig.6).
3. Connect the lamp connectors and lock it (fig.7) with the DC end of the driver.
4. Fasten the clip to the ceiling(fig.8).
5. Turn on the power to make sure the panel light is well installed.

## CAUTION:

CONSULT A QUALIFIED ELECTRICIAN TO ENSURE CORRECT BRANCH CIRCUIT CONDUCTOR.  
CONSULTER UN ÉLECTRICIEN QUALIFIÉ POUR VOUS ASSURER QUE LES CONDUCTEURS DE LA DÉRIVATION SONT ADÉQUATS.

Your Product, when delivered to you in new condition and on original packaging, is warranted, against defects, in materials and workmanship as follows for a period of 5 years from the date of the original purchase. Defective to LED Lights and proven to be defective upon inspection will be repaired, replaced, replaced with a new Product or a credit will be issued against original at the discretion of LED Lights.

For avoidance of doubt, "to replace the" Product does not include any removal or installation costs or expenses, including without limitation labor costs or expenses, shipping costs to return non-conforming products or any damages that may occur during the return of product to LED Lights.

This limited warranty is subject to the following additional conditions:

1. The Products have been installed and operated in accordance with the manufacturer instructions.
2. Products have not been subject to accident, neglect, abuse, misuse, lighting, electrical surges or acts of God.
3. The product has been purchased directly from an authorized LED Lights distributor.
4. Purchase receipt or invoice is available for inspection by LED Lights.
5. This warranty is limited to Products purchased for use in regions that are with in the juris diction of Canada and USA.

This device complies with part 15 of the FCC rules. Operation is subject to the following two conditions:

1. This device may not cause harmful interference, and
2. This device must accept any interference received, including interference that may cause undesired operation.

Dimmer Compatibility List for LED Recessde Lights		
BRAND	MODEL	DIMMABLE RANGE
Lutron	DVCL-153P	10%-100%
Lutron	MA-600	10%-100%
Lutron	DV-600P-WH	10%-100%
Lutron	S-600P-WH	10%-100%
Lutron	CTCL-153P-WH	10%-100%
Lutron	MRF2-6ND-120-WH	10%-100%
Leviton	No.6633-P	10%-100%
Leviton	IPI06-1LZ	10%-100%
Lutron	D-603P-WH	10%-100%
Lutron	D-600P-WH	10%-100%
Lutron	DVF-103P	10%-100%
Lutron	TG-600PH-WH	10%-100%
Leviton	No.6641	10%-100%
Leviton	No.6631	10%-100%
Leviton	No.6681	10%-100%
Lutron	DVCL-153PV2.1	10%-100%
Leviton	No.6633	10%-100%
Lutron	TTCL-100H-WH	10%-100%