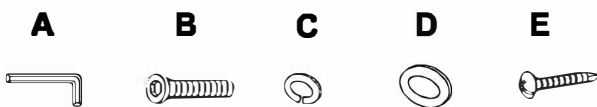


ASSEMBLY INSTRUCTIONS END TABLE

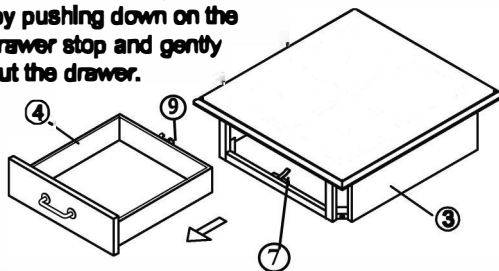
| Hardware Kit | | | |
|--------------|-------|--------------|----------------|
| Ltr | Qty | Description | Size |
| A | 1 pc | Allen wrench | 4mm |
| B | 8 pcs | Bolt | Ø1/4" * 2 1/8" |
| C | 8 pcs | Lock washer | Ø1/4" |
| D | 8 pcs | Flat washer | Ø1/4" * 19mm |
| E | 4 pcs | Screw | Ø8" * 1-1/2" |

| Part List | | |
|-----------|----------------|-------|
| No. | Description | Qty |
| ① | Leg | 4 pcs |
| ② | Shelf | 1 pc |
| ③ | Storage Box | 1 pc |
| ④ | Drawer | 1 pc |
| ⑤ | Floor Glide | 4 pcs |
| ⑥ | Pull w/Screws | 1 set |
| ⑦ | Drawer Stop | 1 pc |
| ⑧ | Drawer Glide | 1 pc |
| ⑨ | Drawer Support | 1 pc |



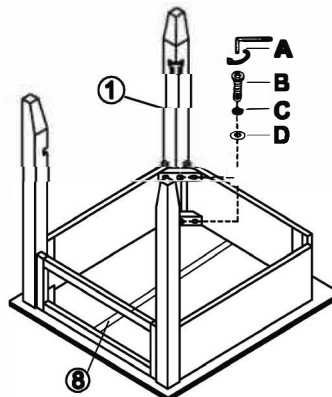
STEP 1: ▼

First pull out the drawer, remove the drawer by pushing down on the plastic drawer stop and gently pulling out the drawer.



STEP 2: ▼

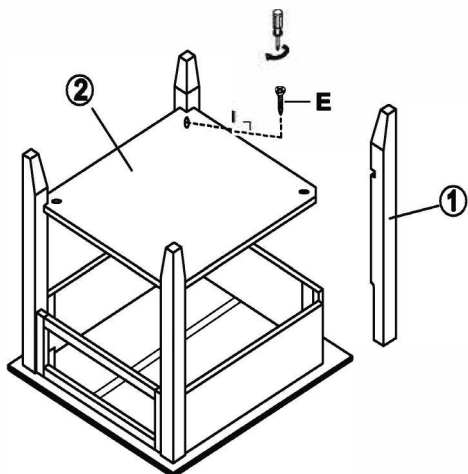
Carefully place the table top upside-down on a smooth, flat surface to prevent scratches during assembly. Attach three legs to the table top with Allen bolt (B), Lock washer (C) and Flat washer (D), loosely tightening with provided Allen wrench (A). Do not completely tighten bolts at this point.



STEP 3: ▼

Insert the shelf between the three legs. Add the fourth leg and secure with a bolt, lock washer and flat washer.

Secure the shelf to the legs using screws (E). Once the shelf is in place fully tighten all bolts and screws.



STEP 4: ▼

Carefully turn the assembled table the upright position. Put back the drawer. Assembly is now complete.

