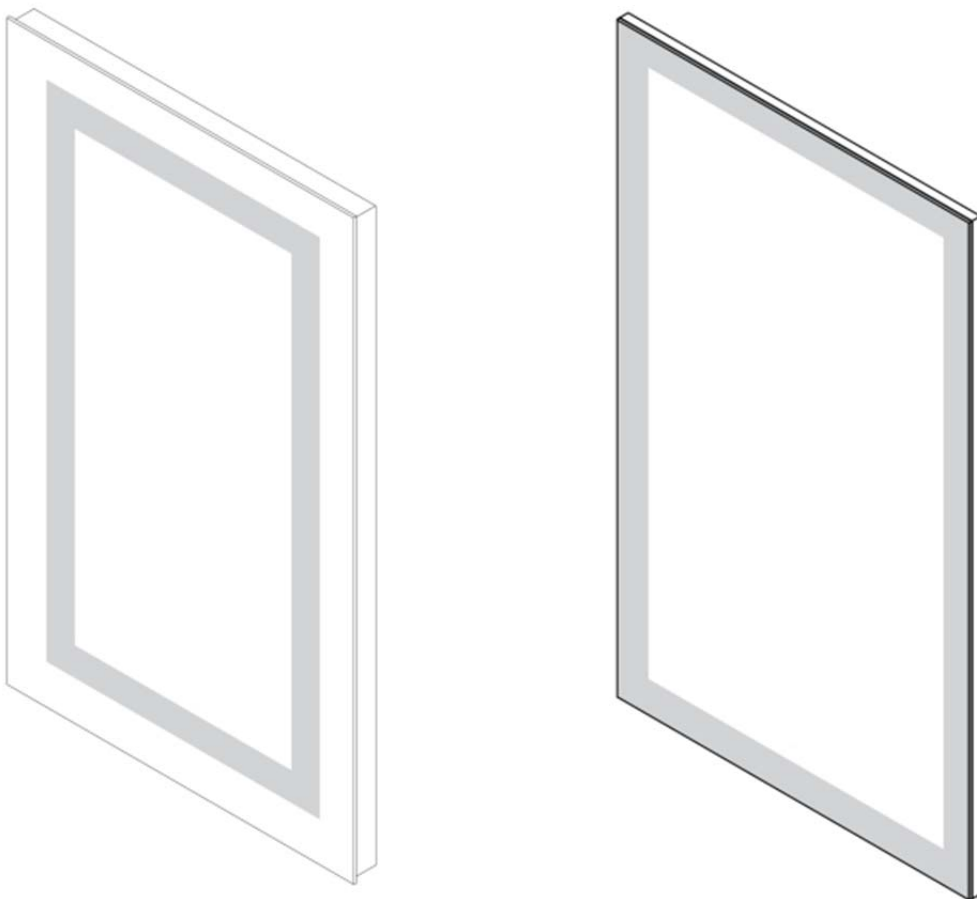


# Installation and Operating Manual



## WARNING AND SAFETY INSTRUCTIONS

Before assembling your LED Lighted Mirror fixture, please make sure that you carefully read through this instruction sheet, refer back to them during installation to ensure your product is fitted safely and correctly. Keep these instructions for future use.

### WARNING Risk of Fire and Electric Shock

- All fittings must be installed in accordance with current IEE wiring regulations. If in doubt, consult a qualified electrician.
- Switch off the electrical supply at the main circuit board BEFORE installation and maintenance.
- Suitable for indoor use only. This product should be positioned well away from curtains and fabrics. Never cover the mirror.
- Regularly check the cord, the transformer and all other parts for damage. If any part is damaged the product should not be used.

## INSTALLATION SAFETY

- Inspect the product immediately upon receipt for the transit damage or missing parts. Handle the product with care and protect against knocks to all sides and edges of the glass.
- Ensure there are no hidden pipes or cables in the wall before drilling.
- Wear suitable eye protection when drilling. Take care if drilling on tiled surfaces in case the drill slips.



### CAUTION

The light source of this product is non-changeable light diodes (LED). Do not disassemble the product, as the light diodes can cause damage to the eyes.

NOTE: The important safeguards and instructions that appear in this manual are not meant to cover all possible conditions and situations that may occur. It must be understood that common sense, caution and care, are factors that can't be built into any product. These factors must be supplied by the person(s) caring for and operating the fixture. Do not install this fixture in hazardous locations.

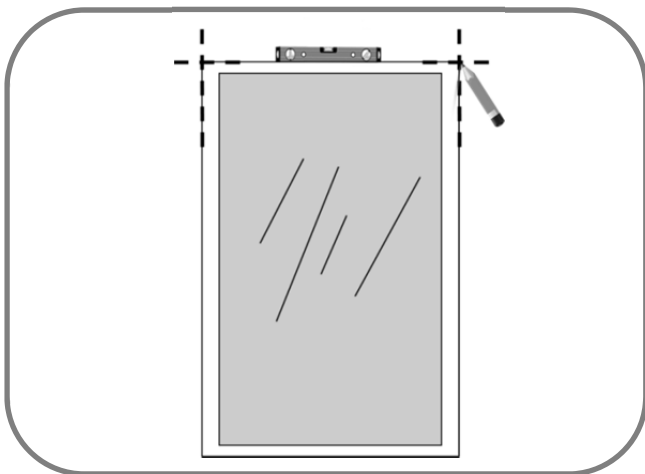
## CHECK PRODUCT LIST AFTER OPENING THE PACKAGE

- LED Lighted Mirror --1pce
- Screw --2pcs
- Expansion Tube --2pcs
- Installation Manual --1pce
- Returning Guide --1pce
- Extended warranty form --1pce

## TOOLS YOU MAY NEED

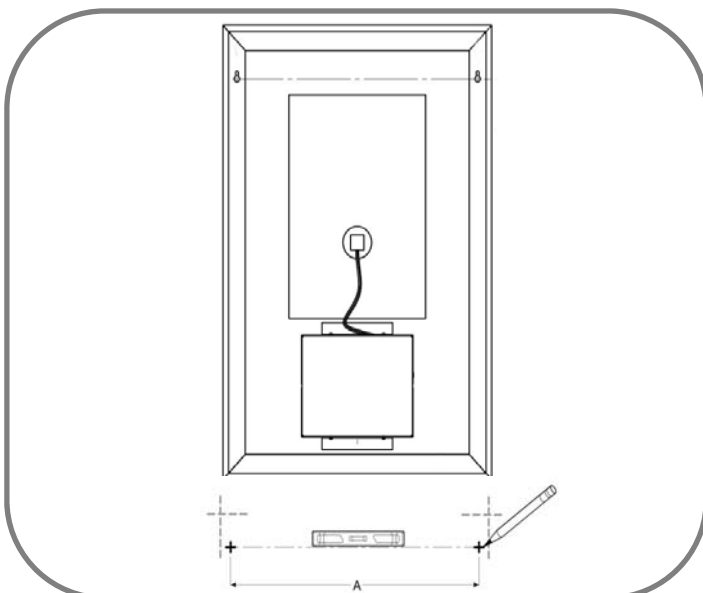


## INSTALLATION MANUAL



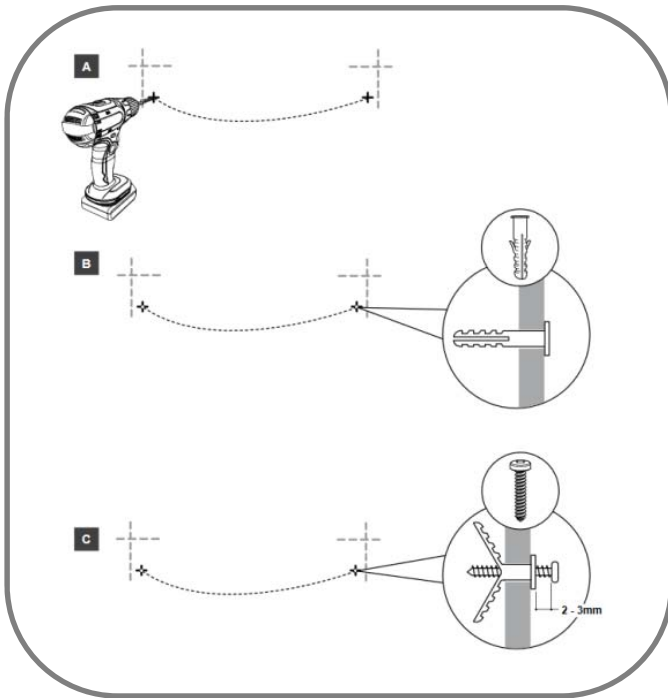
1

Level and mark the location.



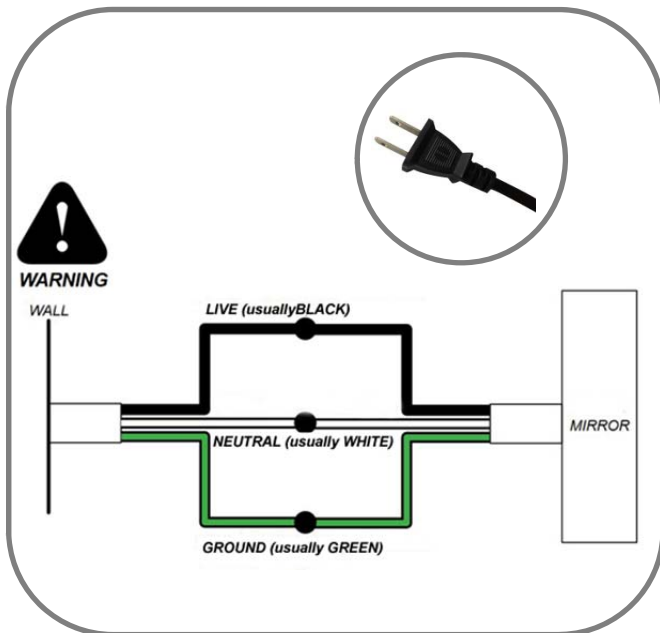
2

Measure the center of the holes and mark the drilling locations ensure marking are leveled.



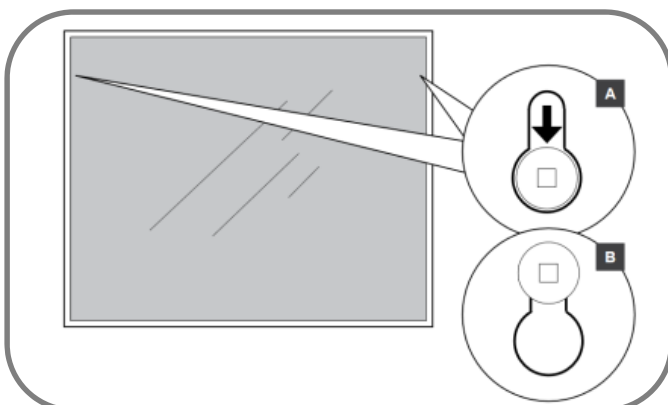
3

Using a drill, make holes and fill with supplied plugs and screws. Leave a gap of 2 - 3mm between the head of the screw and the wall.



4

- We provide plug with mirrors.
- Optional to cut the plug directly and connect to electrical wiring if using wall switch.



5

Place the mirror against the wall and slide down as shown in image B.

## OPERATION INSTRUCTION

---

### ON/OFF Function



ON/OFF button

- Button turns blue when connected to main supply.
- Button always on as long as connecting to main supply.
- Press button to turn on/off the mirror.
- Optional to be wired to wall switch by ON/OFF memory function.

### Dimmer Function



Press and hold on  
for 3-5 seconds



- Press the ON/OFF button and hold on for 3-5 seconds to active the dimmer function.
- Finish setting by withdrawing your finger when brightness reaches the level you need.
- Optional to be wired to wall switch with brightness memory.

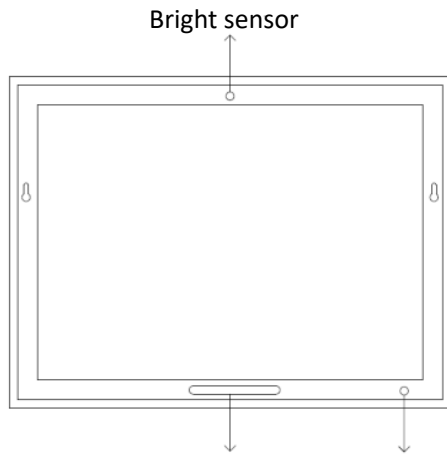
### Anti-Fog Function



Defogger button

- Mirror begins to be warm and defog after pressing the defogger button. Press again to quit the anti-fog function.
  - Note: Each time pressing the button, you will hear a short voice of puff. No worries, it is normal condition.
-

## Night Light (For mirror with night light function only)



- DO NOT cover the sensor on top of the mirror.
- Night light will be auto-on/off according to the brightness surrounding.
- Optional to stop night light function by tapping the ON/OFF switch at the bottom corner of the mirror.

Night light    ON/OFF switch for night light only

---

## AFTERCARE INSTRUCTIONS

Clean using a soft dry cloth only when turned off. Never use cleaning agents or abrasive materials. Do not allow moisture to come into contact with lamp.

## THANK YOU FOR YOUR SUPPORT.

We wish you have wonderful experience in our product. If you have any other needs or queries, please feel free to contact us and get replies within 48 business hours.

---