



JYXCEN Smart Board Instruction Manual



Instructions for operating the live screen

Equipment requirements :

1. Mobile phone requirements: :
Android phones require a system of **Android 9.0 and above**
Apple iPhone require **IOS 10.0 and above**
2. Router requirements: support 2.4/5G dual-band WiFi, it is recommended that the 5G and 2.4G wireless signal names be set to different names to avoid instability during use, broadcast services need to be enabled (generally enabled by default).



3. Network requirements, it is recommended that both the large screen and the phone are connected to 5G WiFi, and must be connected to the same router

Mobile phone wireless screen casting

1.Large screen connected to the network

- 1.1 Connect the power cord and turn on the device, after booting into the desktop, the remote control press ▼ to select the icon,
- 1.2 Open the settings of the big screen - "Network - "Wireless network, select the hotspot of 5GWiFi, and then connect to it, as shown in the picture.



Note: The hotspot name of 5G WiFi will contain the word 5G at the end, please try to connect to 5G WiFi.

2, Connect your phone to WiFi (connect to the same WiFi as the big screen), make sure your phone and the big screen are connected to the same network, please use 5G WiFi if possible

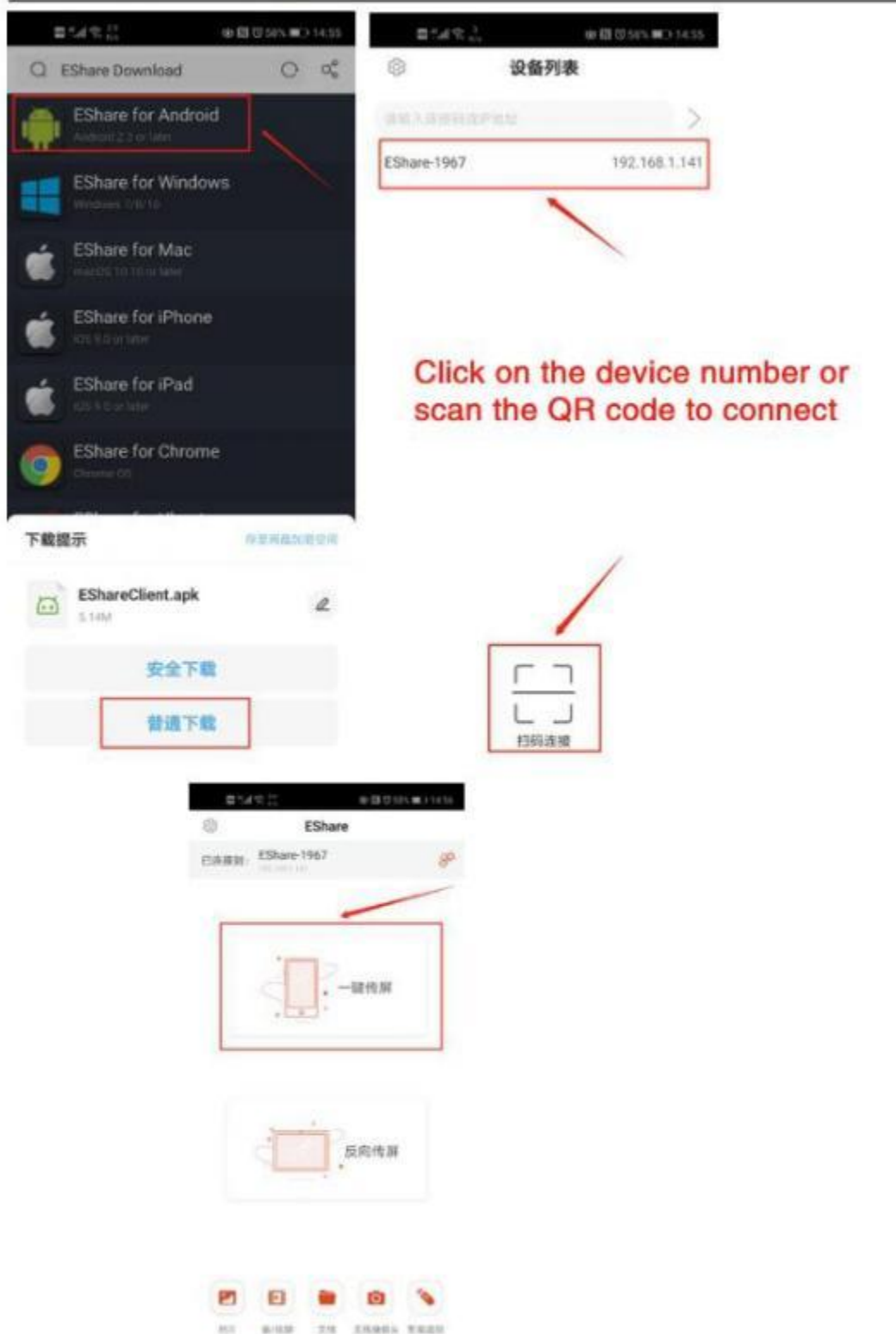
Note: If there is any lag, dropout, delay or black screen, please check if the WiFi is 5G WiFi.

3. Android phone screen casting

3.1, the eshare software opens on the large screen and the QR code appears, as shown in the figure.



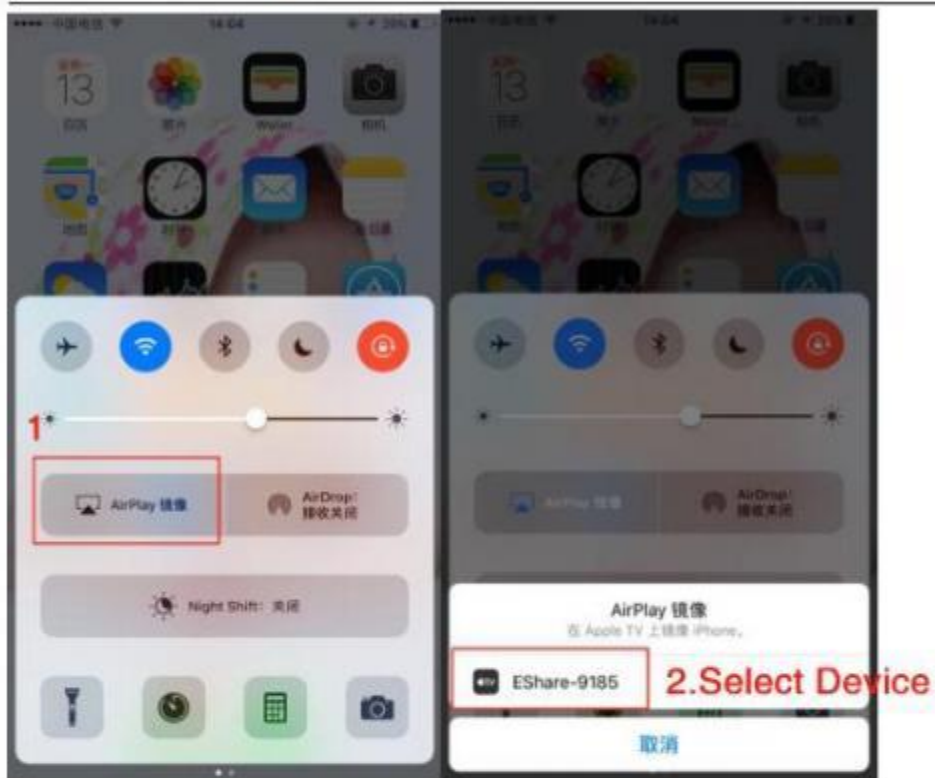
3.2. Open the browser on your mobile phone and then scan the QR code to install the eshare client software, open the software after installation, as shown in the figure.



Click on the device number or scan the QR code to connect

4, iPhone

Open the mirroring function on your Apple phone and simply select the device, as shown.:



5, computer screen casting

1, Download PC screen casting software on your computer

link: <https://pan.baidu.com/s/1lxtg4cagF8MVmrBszc8Pg>

Withdrawal Code: 6pvq

2, Open the downloaded software, then start to cast the screen, cast the screen successfully, the software will automatically shrink to the tray, as shown in the picture:



Multi-device screen casting

After opening eshare software, you can set up 4 devices to cast screen, as shown in the figure.



After setting 4 split screen, you can cast 4 cell phones or computers at the same time. Set the intelligent full screen, you can set the full screen display.

Wired Screen Casting

Cable requirements: original phone data cable or genuine data cable is required



1, Wired screen casting for Android phones:

1.1 Connect the phone and the device through the data cable and follow the prompts to download the software, as shown:



1.2 After installing the software, open the software and follow the guide to license the software, as shown in the figure:



1.3, Reopen the software, the installation prompts to complete the operation, and begin to

cast the screen, as shown:



1.4, At this step, you can cast the screen

If the wired cast screen is not successful, please restart the device, change the usb cable and check the Android version of your phone.

2. Apple phone wired screen casting

Apple phones do not need to download software, the phone and the device can be connected through the data cable, if there are problems, please restart the phone and the device, re-plug the phone's data cable

The use of Android phone counter control and annotation software

Note: This function only supports touch model devices

- 1, Android phones in accordance with the steps of the wired cast screen connected to the phone, you can carry out directly on the touch machine for the reverse

control operation

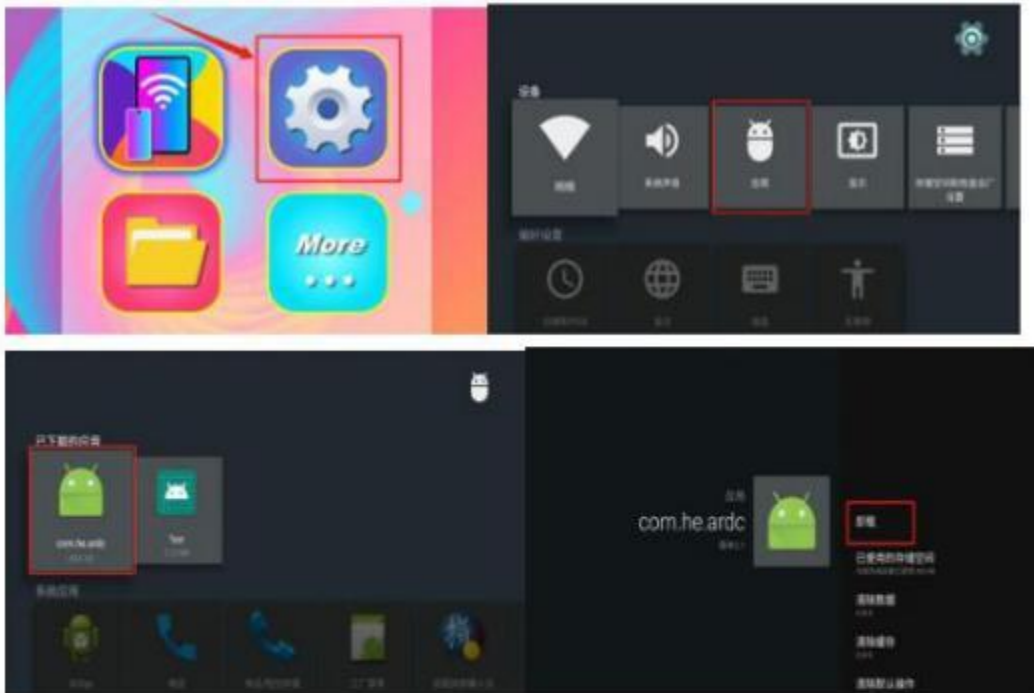
2, Use of annotation software:

2.1 Click on the triangle icon on the side of the screen, the toolbar will appear, and then select the brush, as shown in the figure.



2.2 Now you can implement the annotation function on the screen, if you don't want to use the annotation function now, just click off, as shown:





3.Signal source switching

Remote control press " Signal Source" (or "Channel"), the device will pop up a signal source switching icon (as shown), select the channel you need (such as HDMI), press OK, and then the channel required interface cable (such as HDMI cable) plug into the device



4. U disk auto play picture video:

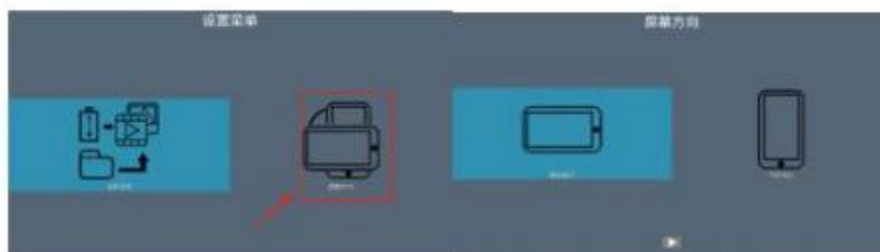
4.1, Horizontal screen, vertical screen, multi-screen selection:

- 1) Open the Self-Play player software, and then as shown:



4.2, Set software split screen

1) Select the screen orientation (select the screen orientation according to the system), as shown:





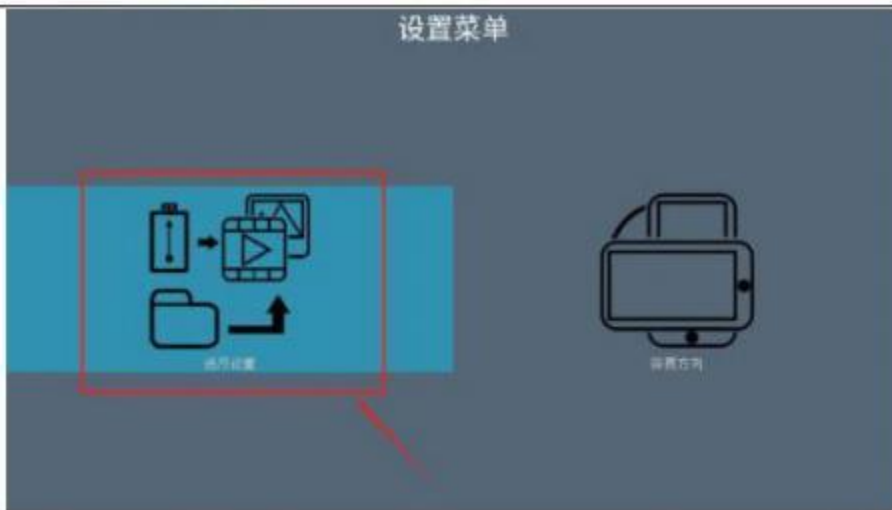
4.3, Set whether to use a USB stick to play or copy to a device and then play:

Open the software, select General Settings, then there are two playback modes:

- 1) Directly play the contents of the u-disk: you need to copy the prepared pictures. Video copy to the root directory of the u disk. (Plug into the device USB port will automatically loop play)
- 2) Copy the contents of the u-disk to the internal storage of the device and play it: you need to create the **AutoPlayFile** folder in the root directory of the u-disk, and copy the prepared pictures, videos to the folder. (Plug into the device USB port will automatically copy, just reopen the device after the copy is completed)

As shown:

设置菜单





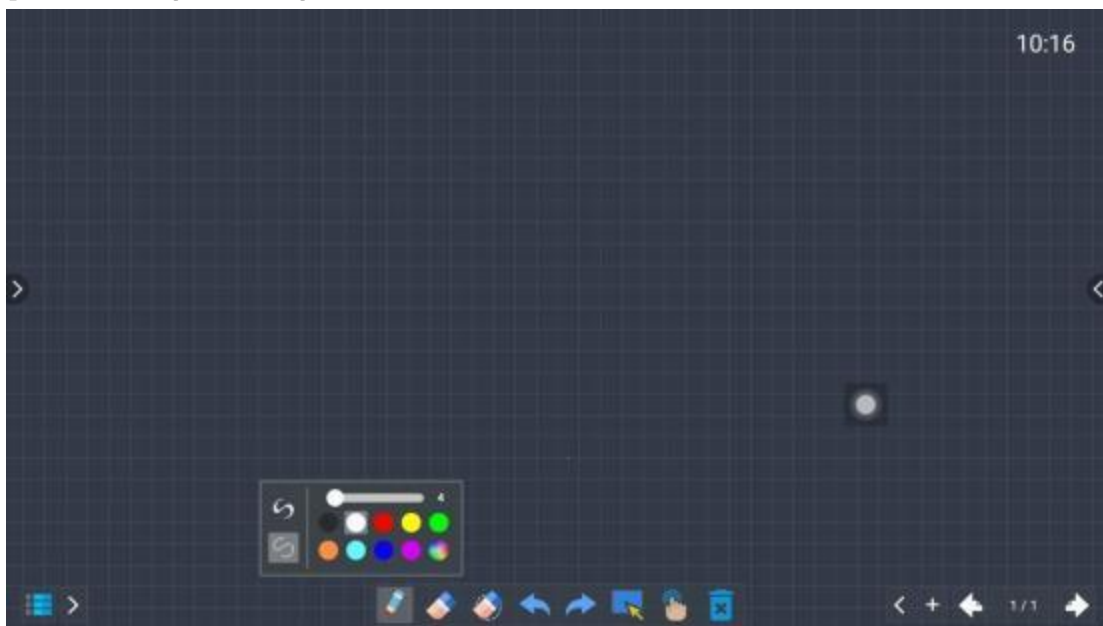
1. Writing whiteboard introduction

Click the white board icon on the home page to enter the following interface :





White board default gray grid background, white single point without brush handwriting, open can be directly written.


2.1 Sketchpad writing Settings




Click  the above interface will be displayed

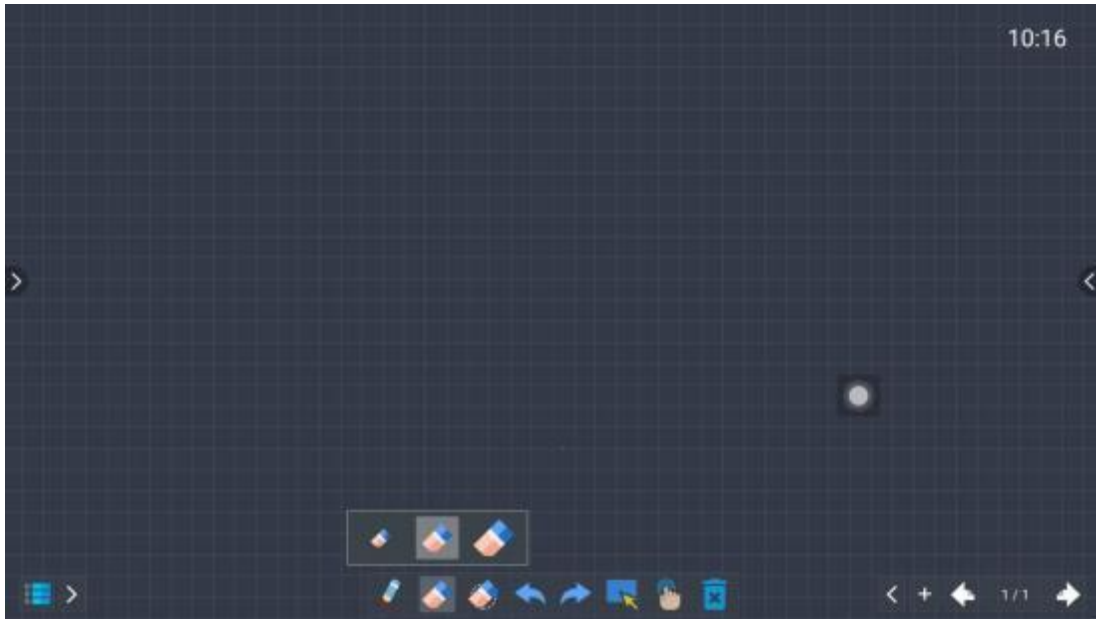
 : Click to select the pen edge. The writing will bring the pen edge, and the change rate of the pen edge can be set.

 : Ordinary writing.

 : Brush color selection, in addition to 9 fixed color selection can also adjust the color.

 : Brush thickness adjustment.

2.2 Set the eraser function(Multi - finger touch recognition into erase function) .



: Click the eraser icon, touch to erase function; If you do not click this icon, the touch with the fingers together will also recognize the eraser function.



:Select the Erase function,select the area to erase, and then erase it automatically.

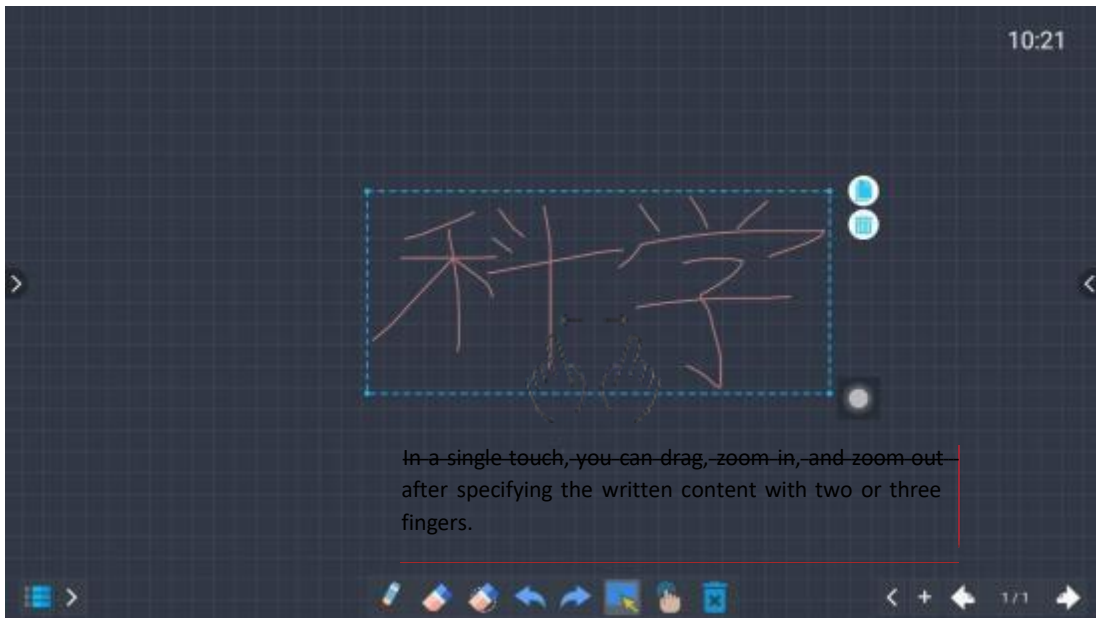


: Undo function, click to undo the previous step.



: Restore function, restore the undo operation.

2.3 Artboard content selection function, after selection can delete, copy, drag and other operations:



: After clicking this icon, you can select the written content to circle to delete/copy the operation.



: Single-point writing/multi-point writing switch.



: Click this icon to clear all written content with one click.

2.4 Artboard page addition function:

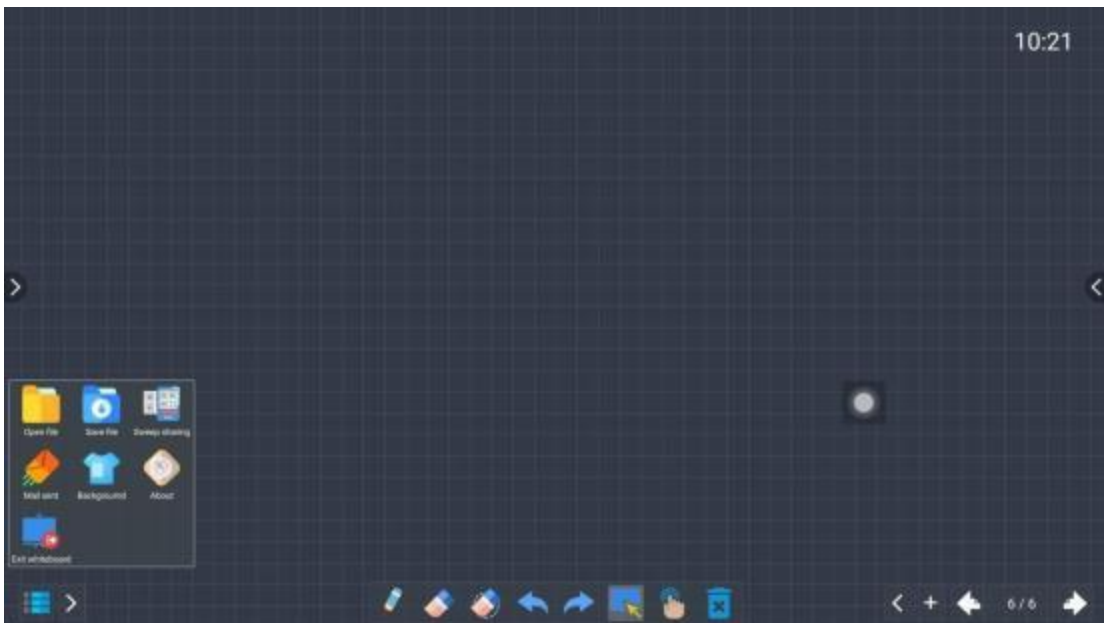


: Click the icon in the lower right corner of the artboard to add the page number of the artboard.



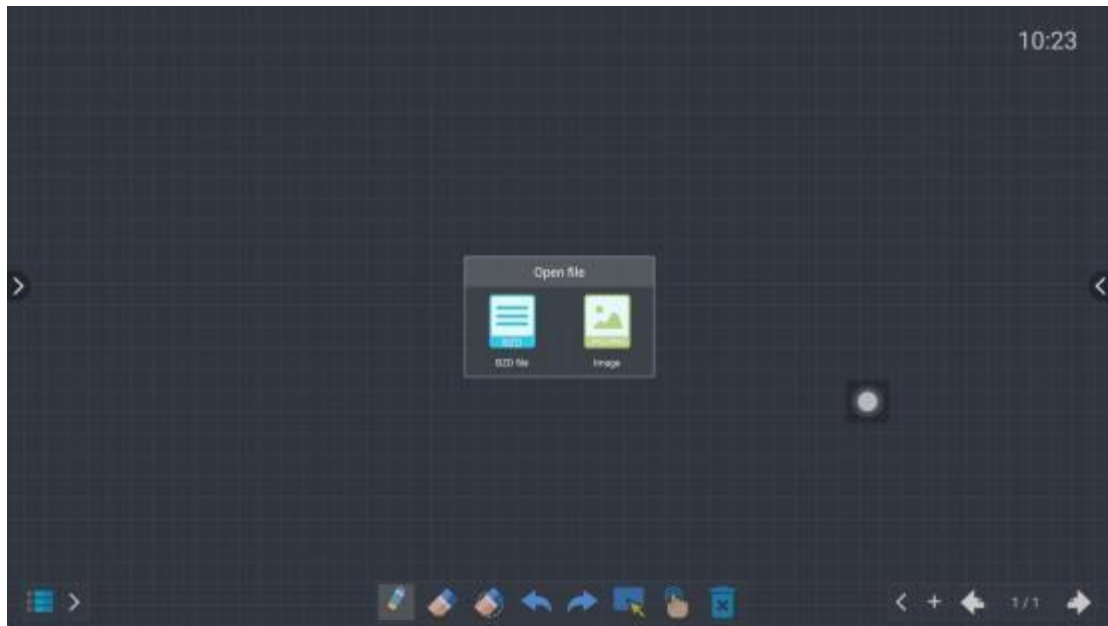
: Click this icon to pop up a preview of the page, as shown on the right.

2.5 Sketchpad writing memory processing functions:



: Click the icon in the left corner to pop up as shown above. It can load the drawing board file, save the drawing board writing content, share the writing content with two-dimensional code, send the writing content by email, change the drawing board background, switch the whiteboard function and other functions.

① Artboard loading file function, as shown below:

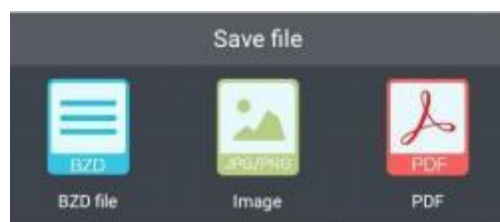


: Click the icon in the left corner of the artboard to load the image (JPG/PNG, BZD).

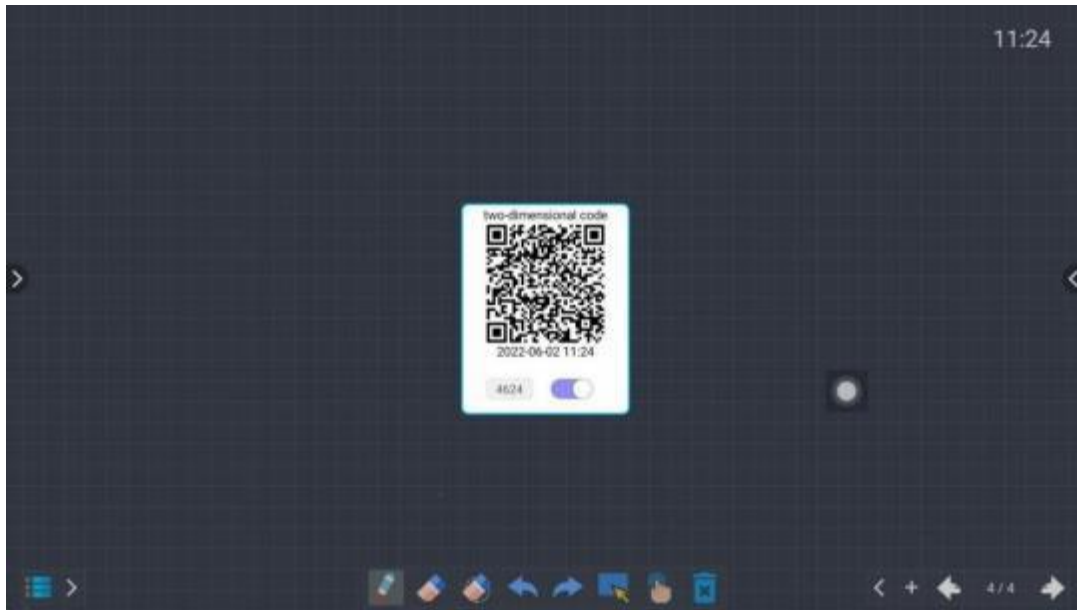
② Drawing board writing content saving function, as shown below:



: After clicking the icon in the lower left corner of the drawing board, you can save the written content in the following formats: Image (JPG/PNG), document (PDF), and file (BZD).

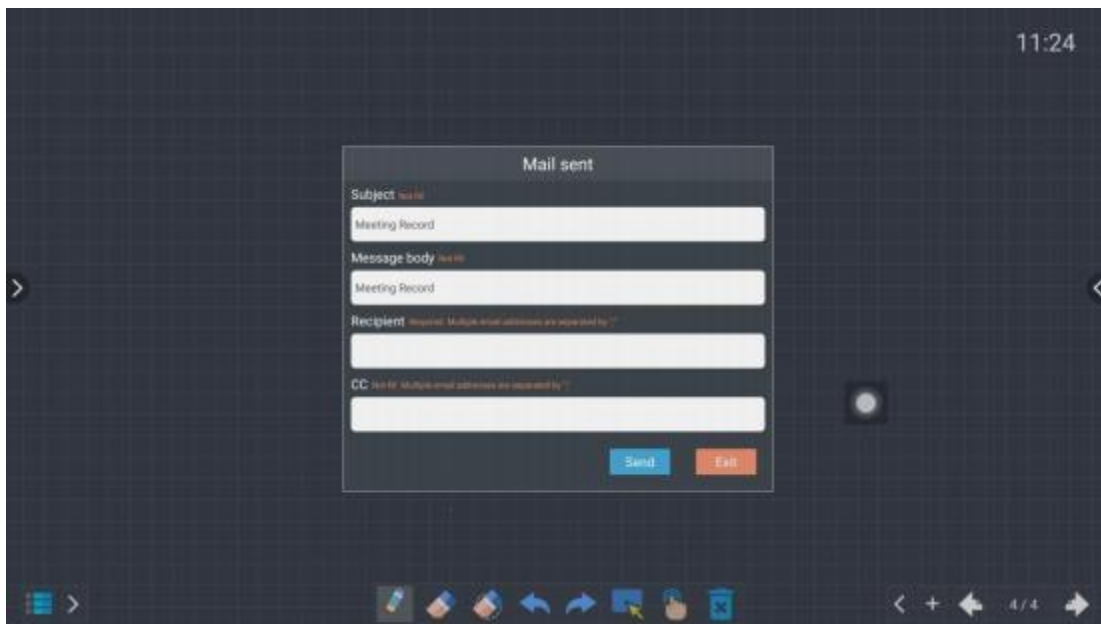


③. Writing content QR code sharing function, as shown below:



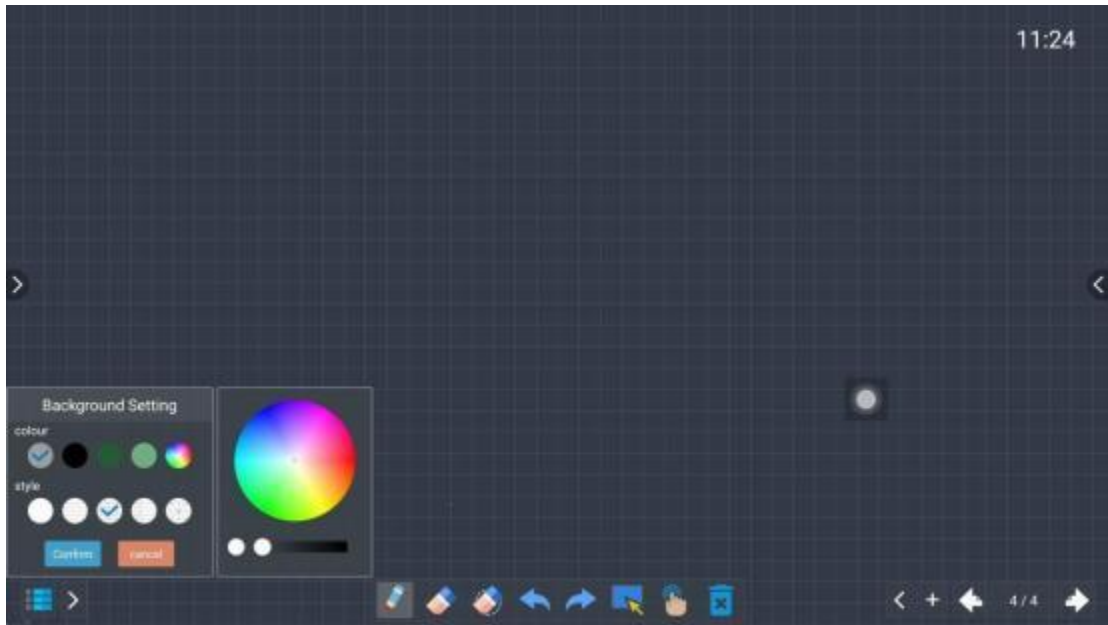
: After clicking this icon in the lower left corner, it will pop up as shown in the figure above. After turning on the switch, you need to enter the password in the figure to scan the code. If it is not turned on, it is not needed (This function is only available online).

④. Write content email sending function, as shown below:



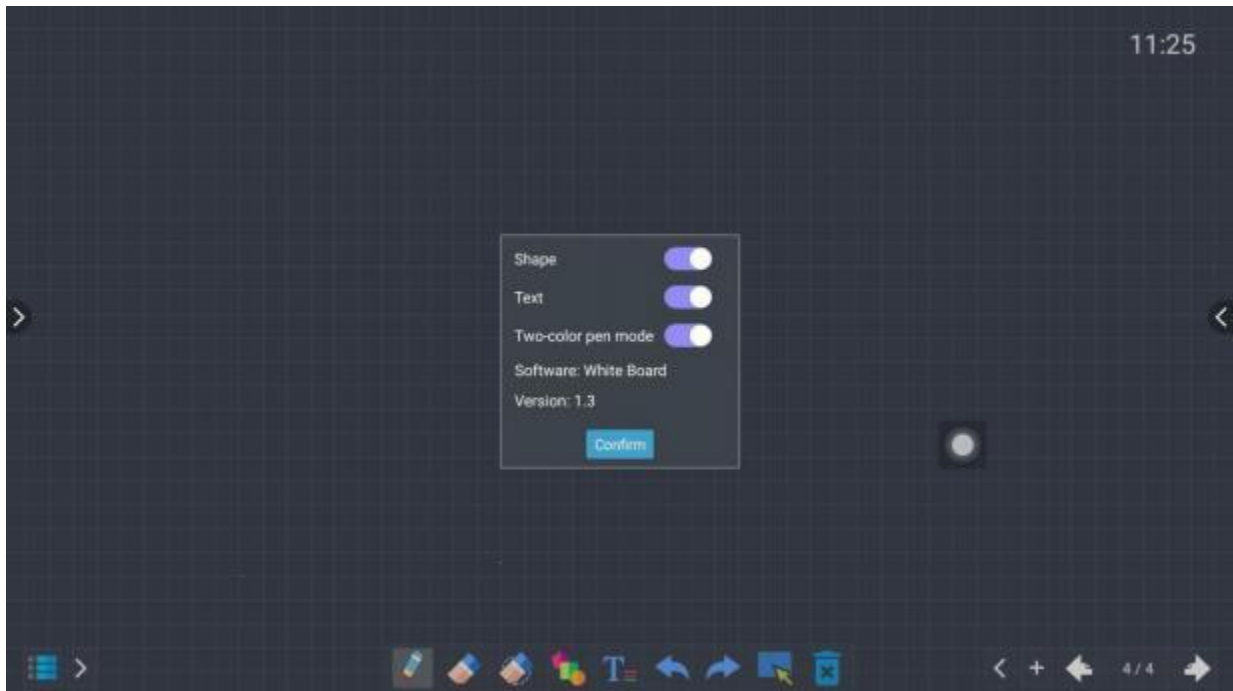
: After the machine is connected to the Internet, click the icon in the lower left corner to pop up the above picture. When sending emails, you can modify the subject and body. When receiving/cc messages, you can set more people to " ; ". To separate.

⑤. Drawing board background replacement function, as shown below:



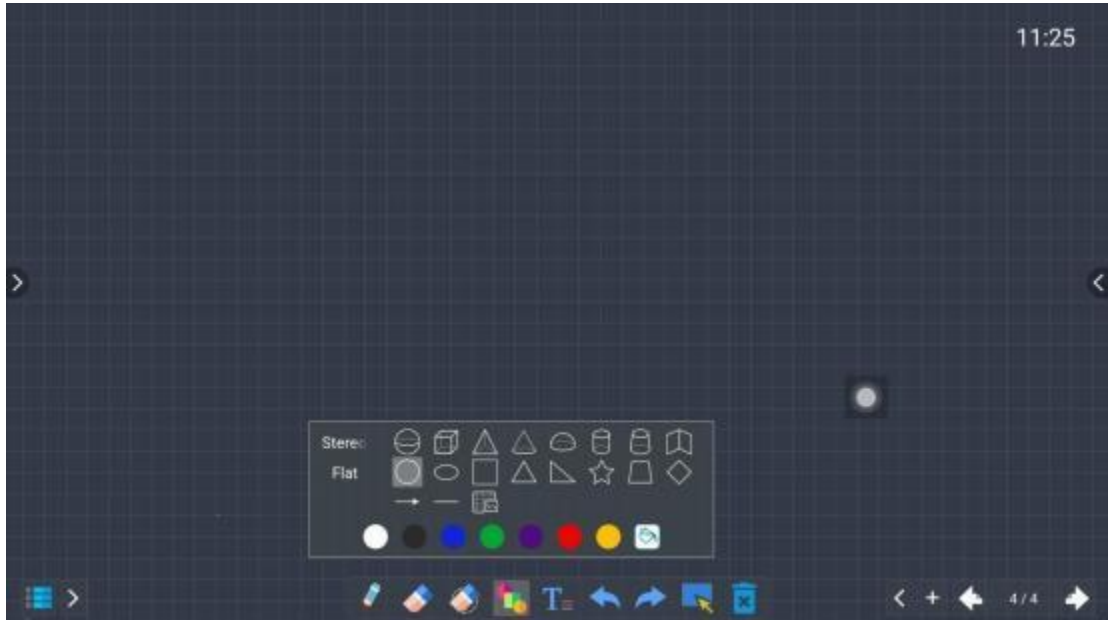
: Click the icon in the lower left corner of the artboard and it will pop up as shown in the picture above: You can select the background color and style of the artboard.


⑥. Whiteboard function (single point/ten point switch, shape function, text function, stroke function) switch, as shown below:



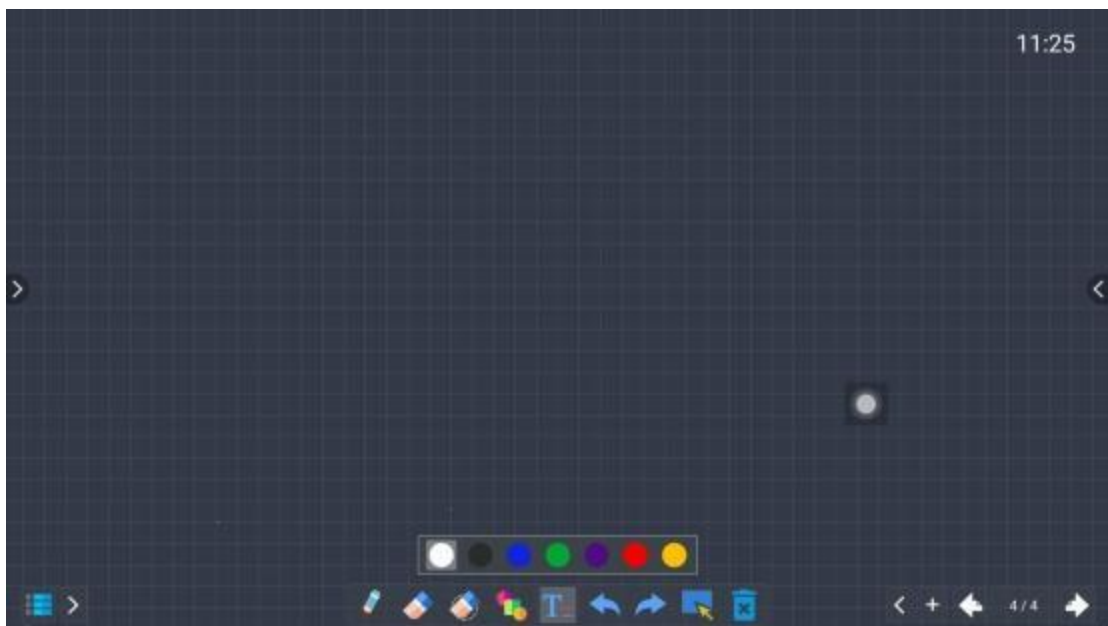
: Click the icon in the lower left corner of the artboard to pop up the picture above


(1)Open the shape function as shown below :



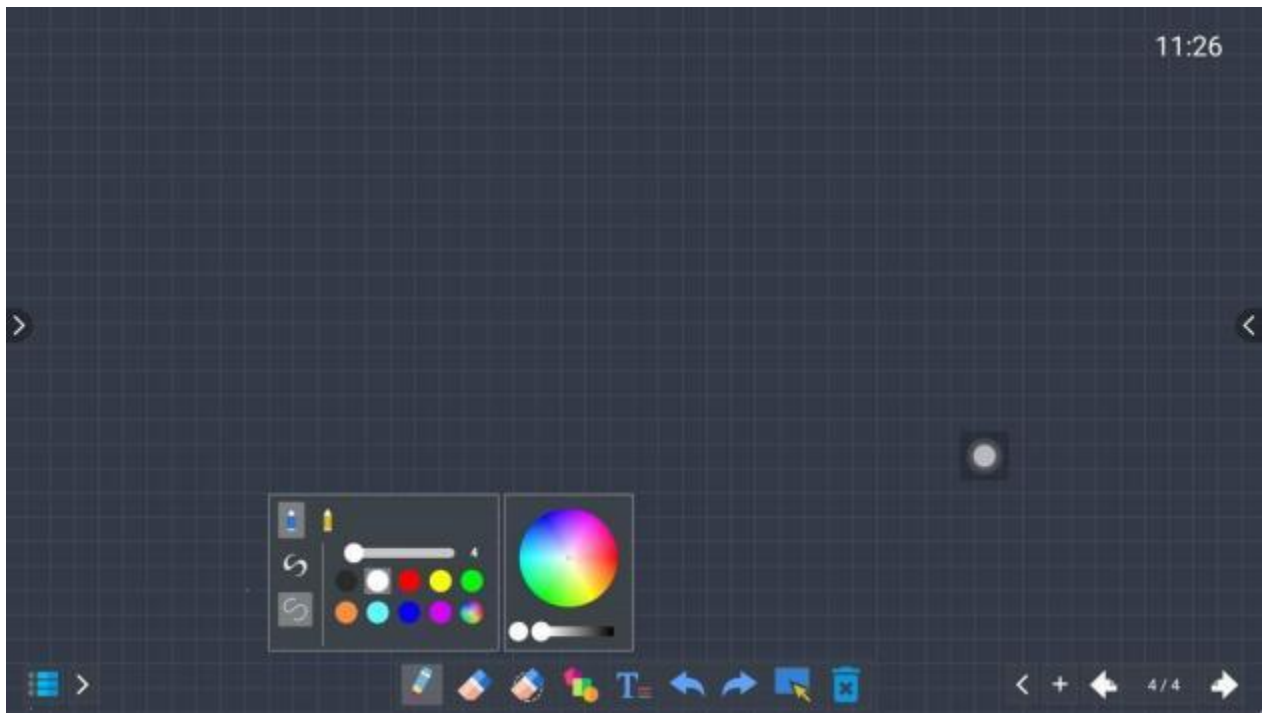
: Click this icon, you can choose to draw a variety of graphics (flat, three-dimensional, can also add a table).


(2)After the text function is opened, the picture is as follows :

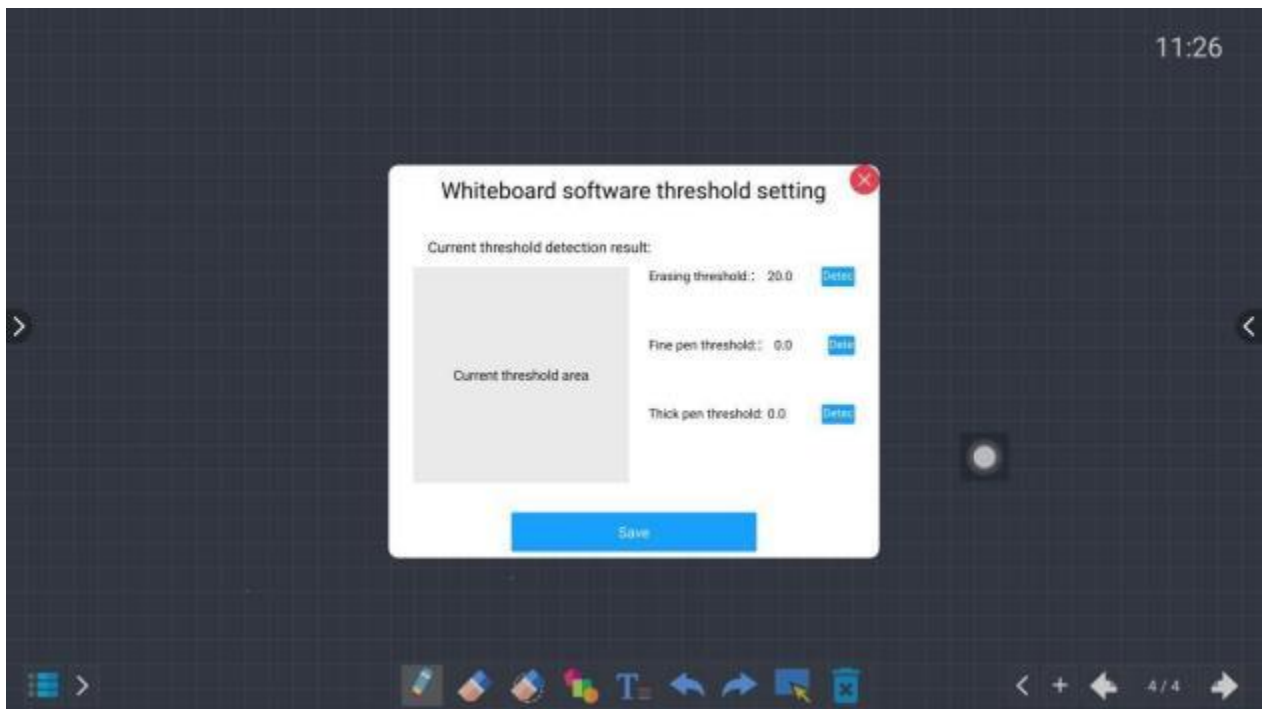


: Click this icon to print text on the artboard.

(3)After the two-color pen mode is opened, the picture is as follows :



After opening the two-color pen mode, it is fixed to multi-point writing, which cannot be zoomed. Click the brush to set the color, edge and line thickness of thick and thin pens respectively. When using a thick and thin pen, set the threshold of the thick and thin pen. Hold down  the press to display the following interface :



To set the eraser threshold, fine pen threshold and thick pen threshold, click the detection on the right first, and the detection will be displayed. Then touch the threshold detection area on the left, and the threshold size will be recorded. After setting, click save. **Note: the threshold difference between the thickness and thickness of the pen should be larger for easy identification**