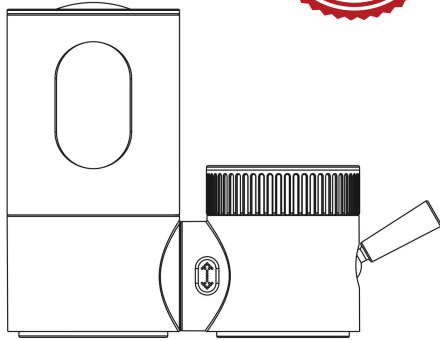


**INSTALLATION GUIDE**



**HOT LINE: +1-866-203-0866**

**FUNCTIONS & SPECIFICATIONS**

**1. FUNCTION**

This product is compact and simple to install

The filter is replaceable, ensuring safety and convenience.

Offers two water flow options, promoting energy efficiency.

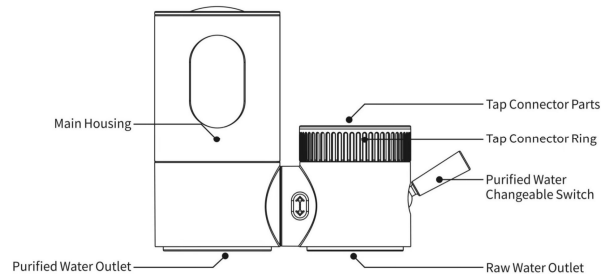
Compatible with various faucet types for versatile use.

Ensures safety and delivers high performance.

**2. PARAMETER**

Product	Tap Water Purifier
Filter Material	UF ultrafiltration membrane +imported coconut Shell Activated carbon
Flow Rate	0.26~0.53GPM
Applied Water	Municipal tap water
Working Pressure	14.5~58PSI
Applied Temperature	33.8°F~100.4°F
Net Weight	0.79lbs
Gross Weight	1.21lbs

**3. STRUCTURAL CHART**



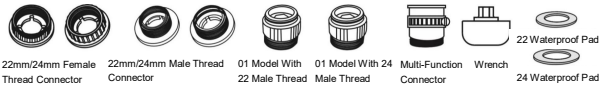
**4. Packing Details**

**4.1 Main Part**

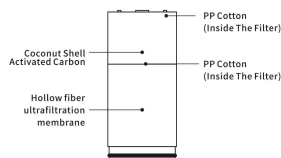
Main Part	QTY	Note
Master Machine	1	
Manual	1	

**4.2 PRODUCT ACCESSORIES**

Connector Accessory	QTY	Note
M21.5x1 Female Thread	1	M22x1 Female Thread
M21.5x1 Male Thread	1	M22x1 Male Thread
M24x1 Male Thread	1	
M24x1 Female Thread	1	
19/20/22/24 Universal Joint To M21.5 Male Thread	1	
M21.5x1 Male Thread To M21.5x1 Male Thread (Extension)	1	M22x1 Male Thread To M22x1 Male Thread
M21.5x1 Male Thread To M24x1 Male Thread (Extension)	1	M22x1 Male Thread To M24x1 Male Thread
S10/S11 Allen Key	1	
Waterproof Pad 23mmx13mmx2.6mm	1	
Waterproof Pad 21mmx12mmx3.2mm	1	
Teflon Tape	1	



**5. FILTER CONFIGURATION**



Ultrafiltration Filter Element

**6. NOTED**

If the cartridge is dirty but functioning normally, the vendor assumes no responsibility. The vendor is also not responsible for any damage caused by human actions.

**INSTALLATION STEPS**

**7. BEFORE PROCEEDING**



**WARNING:** Before beginning any installation or operation, read all instructions carefully. If you are unsure about installing this product, consult a licensed professional. This product must be installed in compliance with all applicable local and state plumbing and building codes. Professional assistance is strongly recommended.

**8. SHUT OFF WATER SUPPLY**

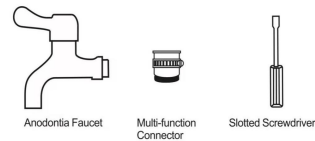
Turn off the faucet. If replacing an existing unit, remove the old faucet and thoroughly clean the mounting surface.

**9. CHECK THE COMPONENTS OF THE BOX**

If any of these items are missing, please contact SUMERAIN consumer service by email to: [supports@sumerain.com](mailto:supports@sumerain.com)

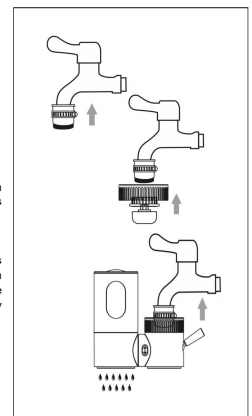
**10. INSTALLATION METHOD OF THREE DIFFERENT FAUCET**

**10.1 INSTALLATION OF ANODONTIA FAUCET**

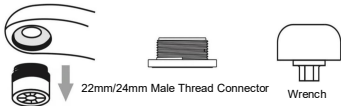


Step One: Use a slotted screwdriver to loosen the multi-function connector. Attach the connector to the faucet outlet and ensure it is tightly secured to prevent leaks

Step Two: Check the connected rings to ensure the waterproof pad is present. If the pad is present, tighten the rings and the multi-function connector. Turn on the tap water purifier and inspect for any leaks. The installation is complete once clean, purified water flows without any leaks.



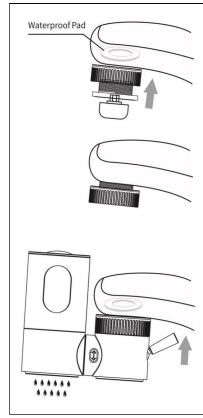
## 10.2 INSTALLATION METHOD OF FEMALE THREAD FAUCET



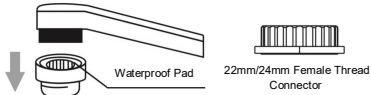
Step One: Prepare the Female threaded parts as shown in the image above and remove the aerator.

Step Two: Select the appropriate waterproof pad and male thread connector (as shown in the figure). Install them into the faucet and tighten (as shown in the figure). Ensure the waterproof pad is included to prevent leaks.

Step Three: Verify the waterproof pad and securely tighten the tap water purifier onto the male thread connector (as shown on the right). Turn on the tap water purifier and check for leaks. The installation is complete once clean, purified water flows without any leaks.



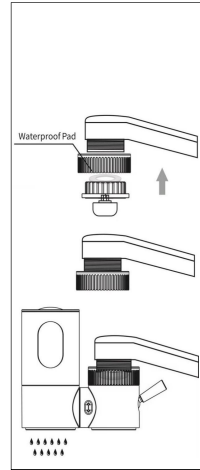
## 10.3 INSTALLATION METHOD OF MALE THREAD FAUCET



Step One: Prepare the male threaded parts (as shown in the image above), and remove the aerator (as shown in the image above).

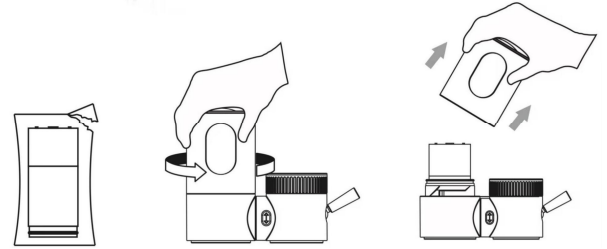
Step Two: Select the most suitable waterproof pad and male thread connector (as shown in the figure). Install them into the water purifier and tighten securely. (Remember to include the waterproof pad to prevent leaks.)

Step Three: Check the waterproof pad and securely tighten the tap water purifier onto the male thread connector (as shown in the image to the right). Turn on the tap water purifier and check for any leaks. The installation is complete once clean, purified water flows without any leaks.

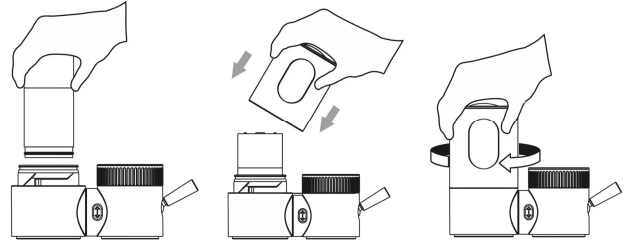


## 11. FILTER INSTALLATION AND REPLACEMENT

### 11.1 FILTER INSTALLATION



1. Remove the heat-shrink film from the filter element, ensure the base is properly sealed for waterproofing and inspect the filter element for any damage.
2. Remove the plastic housing.
3. Please remove the old filter.



4. Put a new filter inside.
5. Cover the housing.
6. Tighten the housing

## 12. MAINTENANCE

### 12.1 FILTER MAINTENANCE AND REPLACEMENT

At times, users may notice a decrease in water flow after prolonged use. To address this issue, replace the filter element directly.

UF ultra membrane composite filter element

Filter Element Lifespan
UF Ultrafiltration Membrane
12 Months

### 12.2 SUGGESTION ON FILTER LIFESPAN

Water quality, pressure, and other factors can significantly impact the lifespan of the filter. The filter element is recommended to be replaced every 12 months. For optimal performance, please adhere to our recommended usage guidelines.

### SUMERAIN INTERNATIONAL GROUP INC

Address: 1226 NORTH KING ST NUM 522  
WILMINGTON, DE 19801  
United States

Tel: +1(866)203-0866

Web: <http://www.sumerain.com>

E-mail: [supports@sumerain.us](mailto:supports@sumerain.us)

### HONGKONG SUMERAIN SANITARY INDUSTRY CO., LIMITED

Address: FLAT/RM 3B 3/F BANK TOWER  
NOS.351&353 KING'S ROAD  
NORTH POINT  
HK

Tel: +86-750-2731579

E-mail: [supports@sumerain.com](mailto:supports@sumerain.com)

### SUMERAIN EUROPE SUPPORT

Address: Flottwellstr. 15  
10785 Berlin,  
Deutschland

Tel: +49 (0)30/23975898

E-mail: [de@sumerain.com](mailto:de@sumerain.com)