

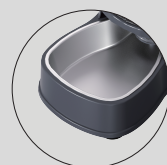
# Pet water and food dispenser



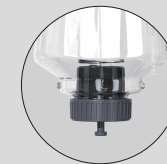
## Pet water dispenser



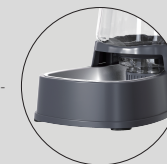
1-Water Bottle



2-Stainless Steel Bowl



3-Filter water outlet



4-Waterer Base

## Installation manual of waterer



- **STEP 1: Complete installation**  
After unpacking, pick up the water tank, align the bulge with the notches in the base, and press firmly to the end.



- **STEP 2: Unscrew the water bottle**  
Turn counterclockwise and remove the water bottle



- **STEP 3: Unscrew the cap and fill the tank with water**  
Twist the lid counterclockwise and fill the tank with water



- **STEP 4: Screw on the lid**  
Note that the filter cotton shall be wrapped around the small part 1 and then inserted into the large part 2.

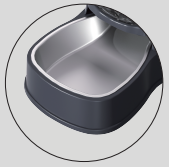


- **STEP 5: Install the water tank clockwise**  
Align the two bulge at the mouth of the tank with the two notches on the base, then turn the tank clockwise slightly
- **Note: The top cover does not need to be removed.**

## Pet food dispenser



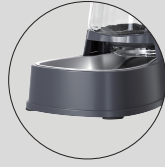
1-Food Bucket



2-Stainless Steel Bowl



3-Feeder Outlet



4-Base

## To ensure safe use, please read the following notes carefully before using

- 1. Please use this product according to the installation and disassembly instructions
- 2. Please place product on a stable ground to prevent falling
- 3. Please keep product away from the fire and direct sunlight area
- 4. Please keep waterer product away from other electrical appliances and sockets
- 5. Please do not use sharp objects to scratch the surface of the product
- 6. This product for pets only, please use under supervise

Don't hesitate to send email to: [after-service@gardnerpets.com](mailto:after-service@gardnerpets.com) for after-sale service.

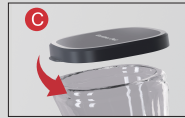
## Installation manual of food feeder



- **STEP 1:**  
Open the lid as it shown



- **STEP 2:**  
Fill in with food



- **STEP 3:**  
Close the top lid

## Disassembly manual



- **STEP 1:**  
Turn counterclockwise to remove the food bucket



- **STEP 2:**  
Pull up the clip from base

Gardner pet