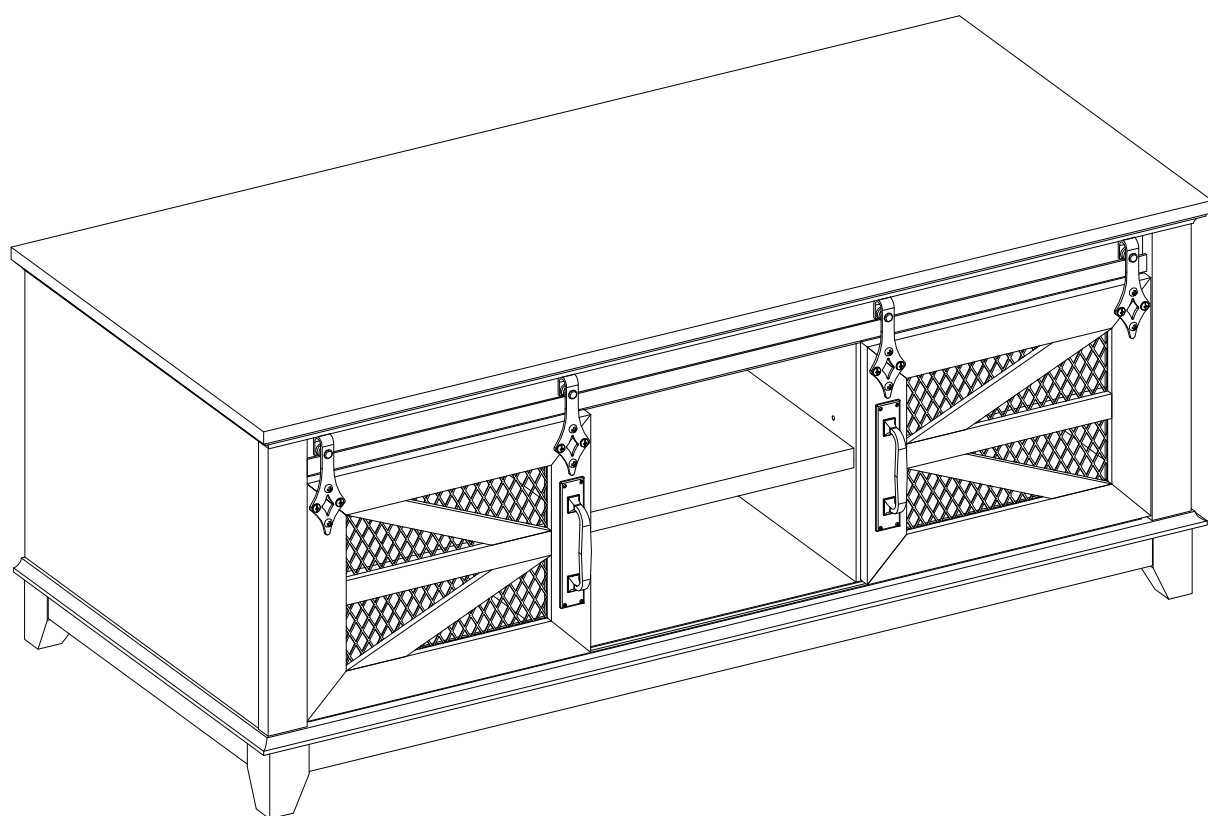


# Assembly Instructions



# General Assembly Guidelines

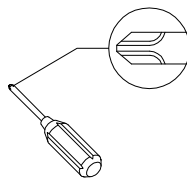
- I. Ensure that all parts and hardware are available before beginning assembly.
- II. Follow each step carefully to ensure the proper assembly of this product.
- III. Two people are recommended for ease in the assembly of this product.
- IV. The three main types of hardware used to assemble this product are : wood dowels , screws and bolts.
- V. The provided glue is to secure wood dowels in place . When first inserting dowels , locate the appropriate hole for the dowel , place a small amount of glue in the hole and insert the dowel . Wipe away excess glue immediately.



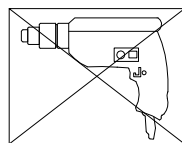
In future assembly steps when dowels are necessary to attach assembly parts together , place a small amount of glue on the end of the dowel before attaching parts together . Wipe away excess glue immediately.



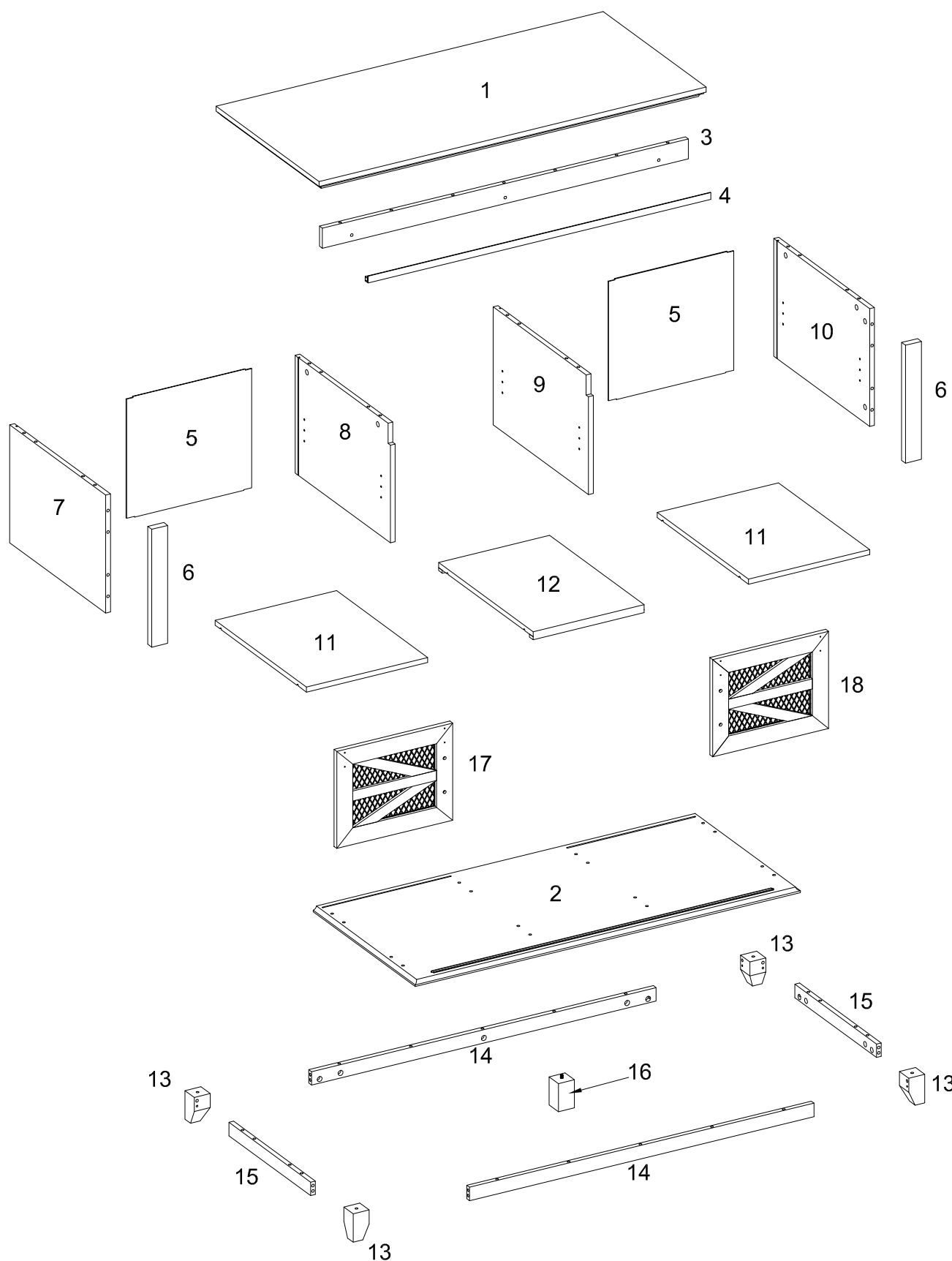
- VI. A Phillips head screwdriver is required for the assembly of this product .




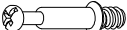


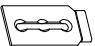

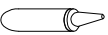
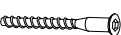
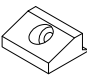



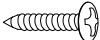


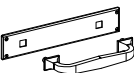
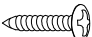
- VII. Power tools should not be used to assemble this product .

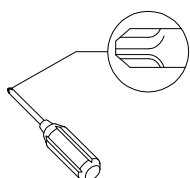


Parts List



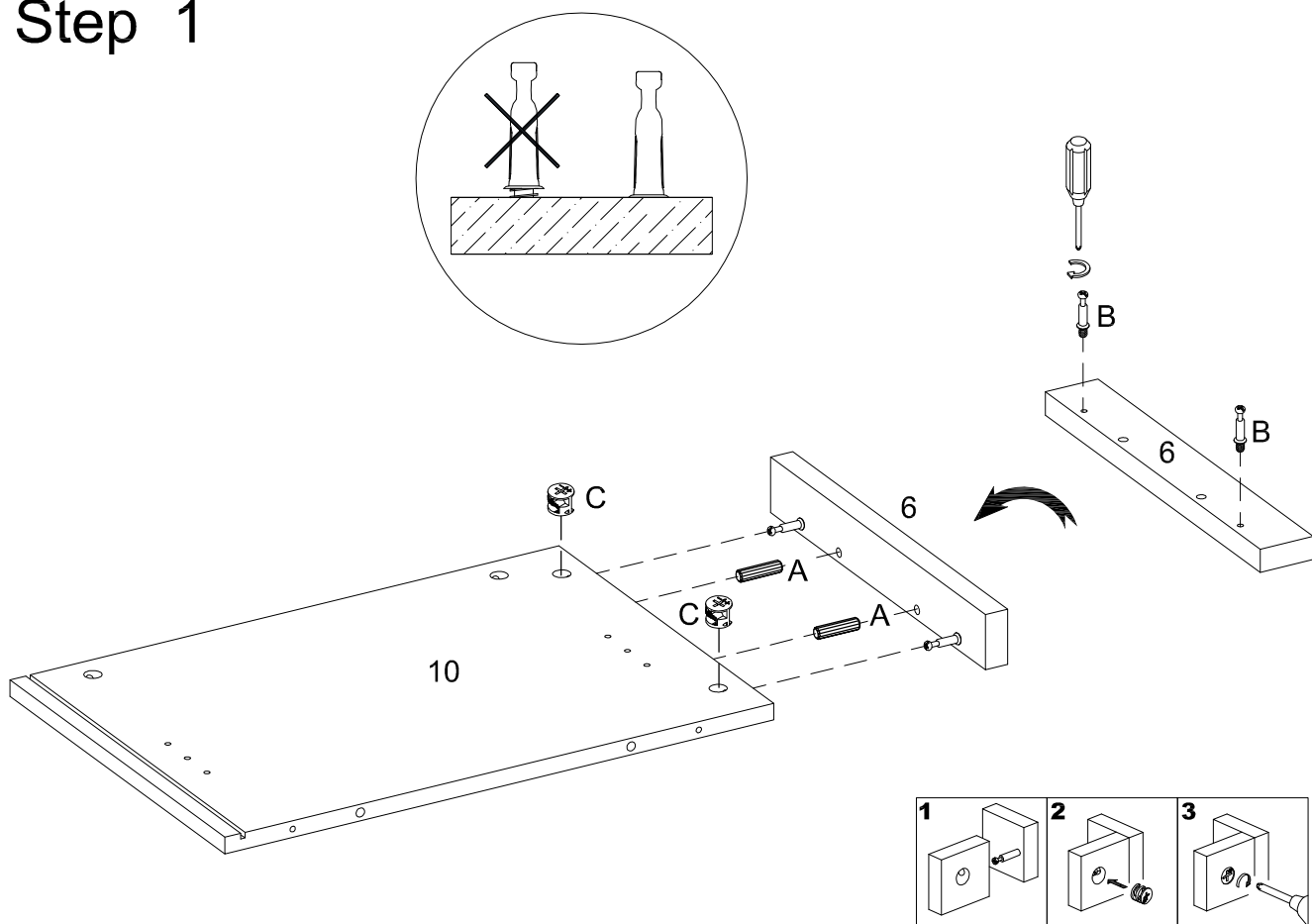
# Hardware List

A		Ø8x30mm	Wood dowel	43 pcs
B		Ø6x35mm	Cam bolt	34 pcs
C		Ø15x11mm	Cam lock	34 pcs
D			Sticker	34 pcs
E			Plate	4 pcs
F		Ø8x5x16mm	Shelf support pin	12 pcs
G			Glue	2 pcs
H		Ø6x50mm	Screw	8 pcs
J			Plastic wedge	8 pcs
K		Ø3x17mm	Flat-head screw	8 pcs
L		M 4	Hex key	1 pcs
M			Pulley	4 pcs
N		Ø5x14mm	Screw	8 pcs
P		Ø6x25mm	Bolt	3 pcs
Q		Ø4x12mm	Handle bolt	4 pcs
R			Handle	2 pcs
S		Ø4x12mm	Screw	8 pcs

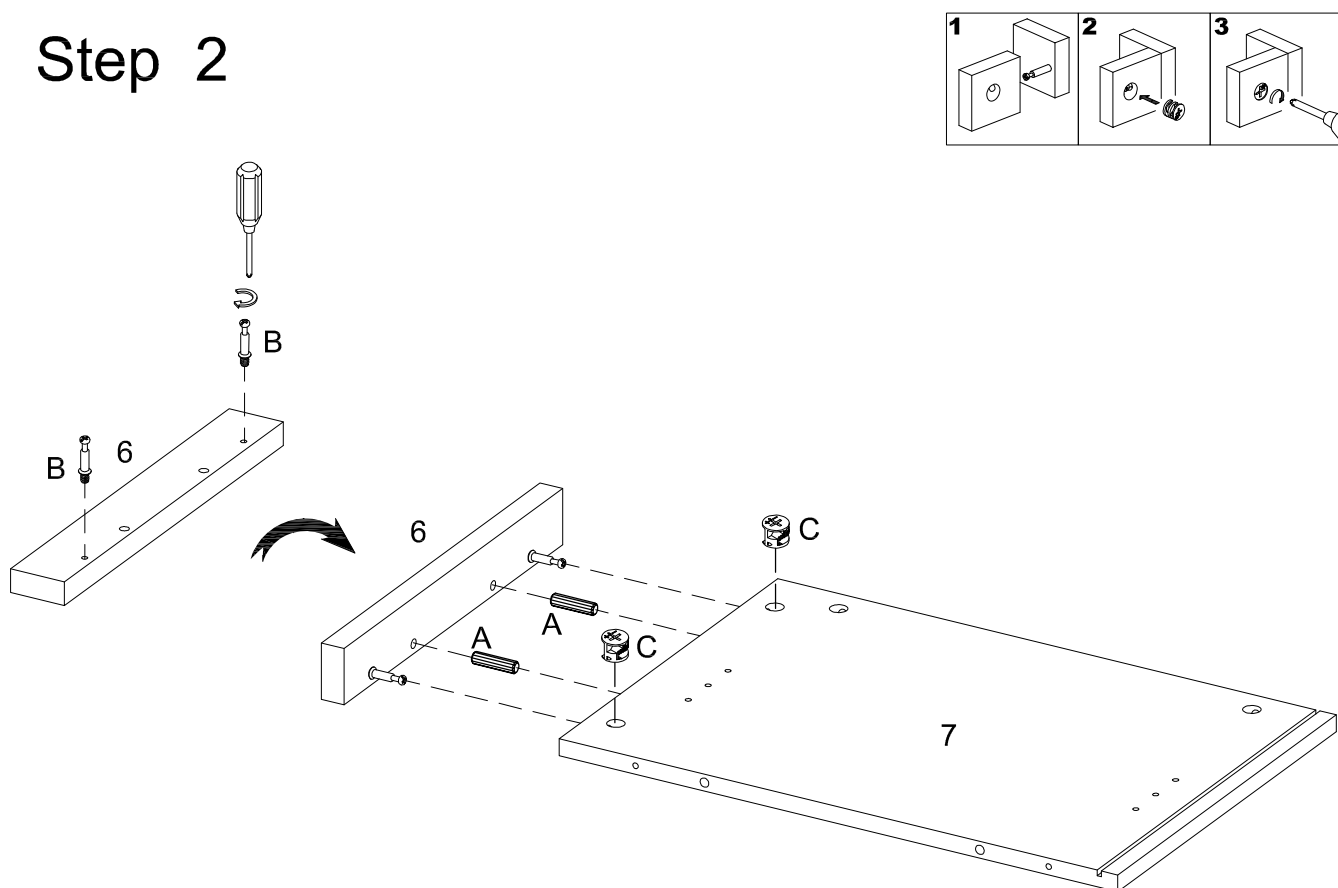


Philips head screwdriver required for assembly  
(not included)

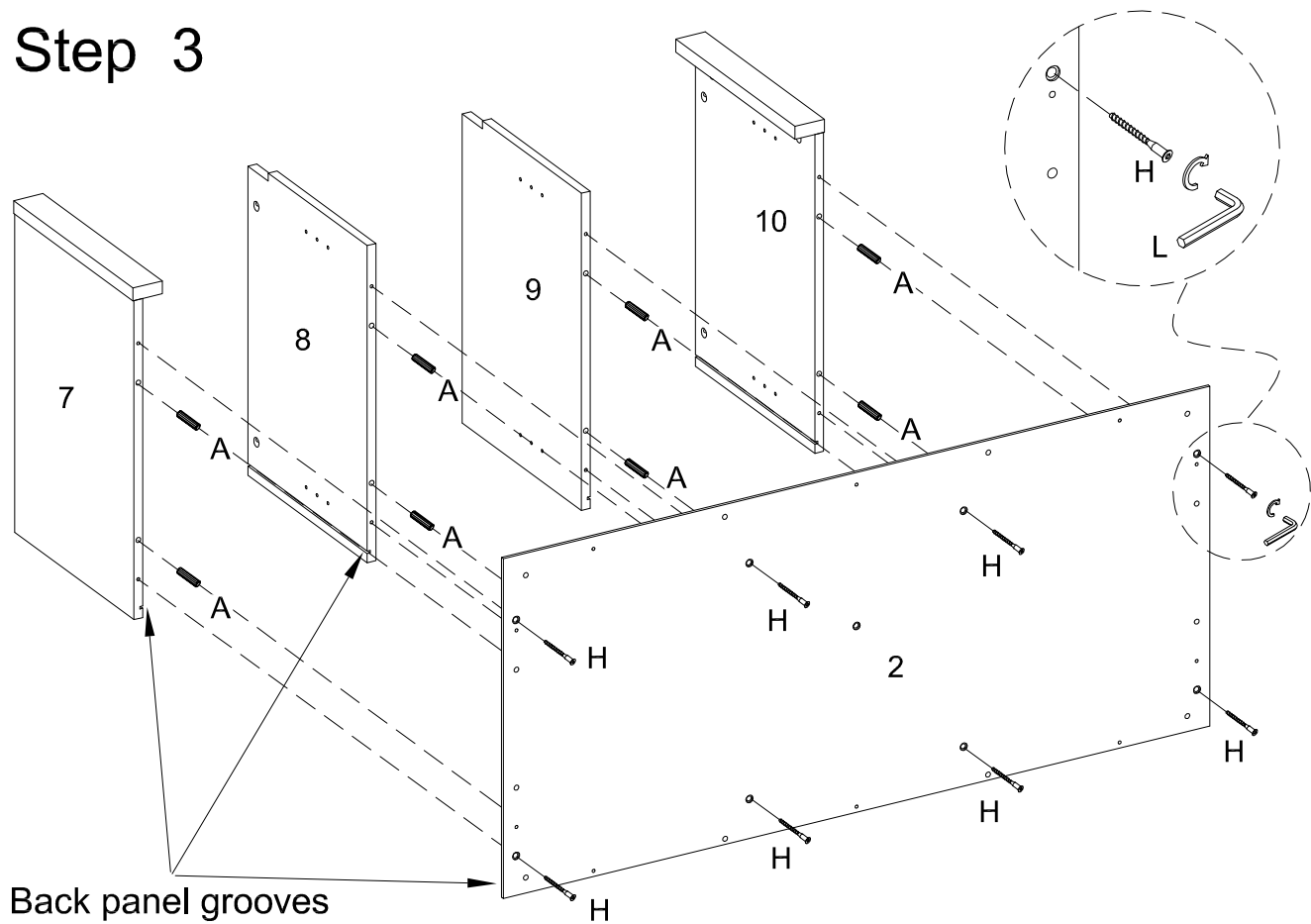
## Step 1



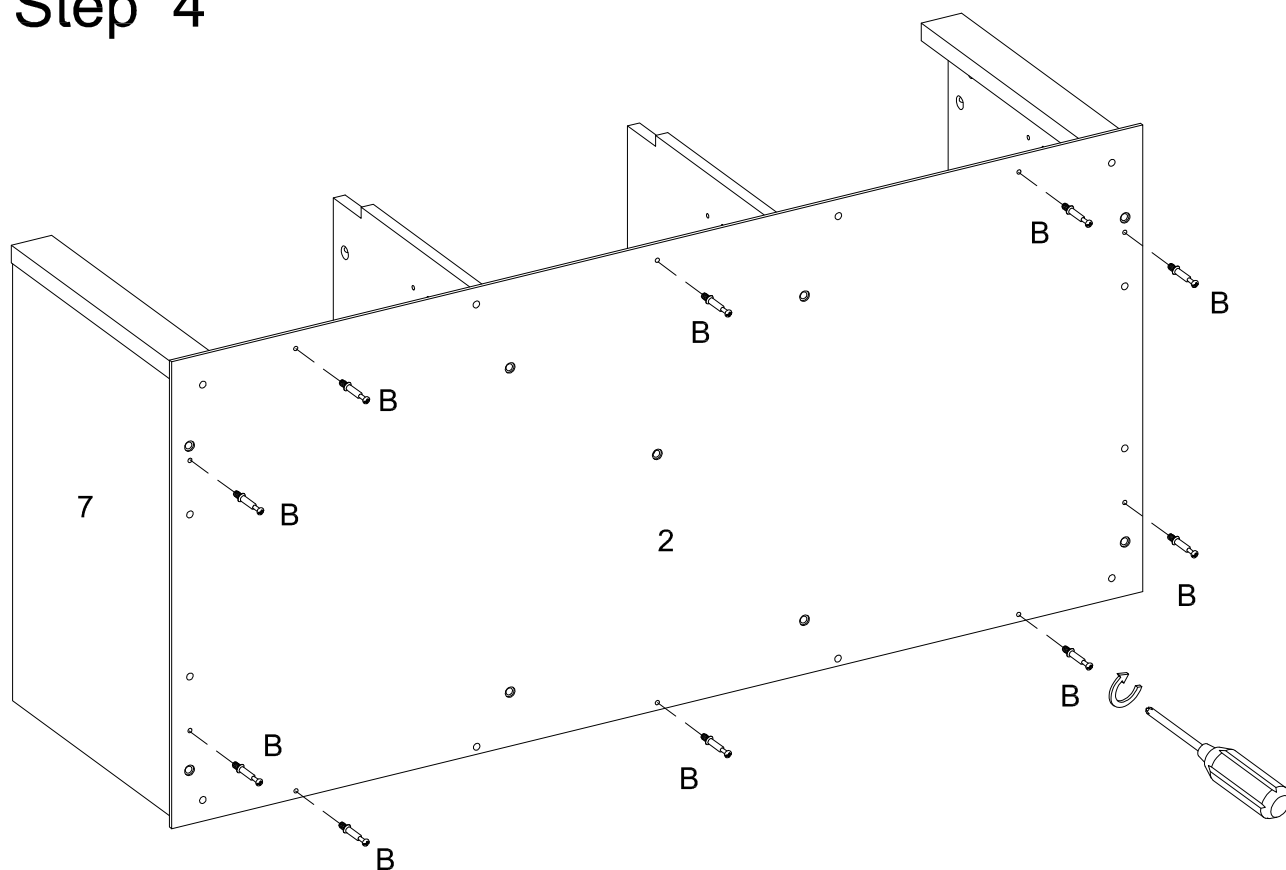
## Step 2



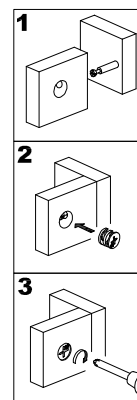
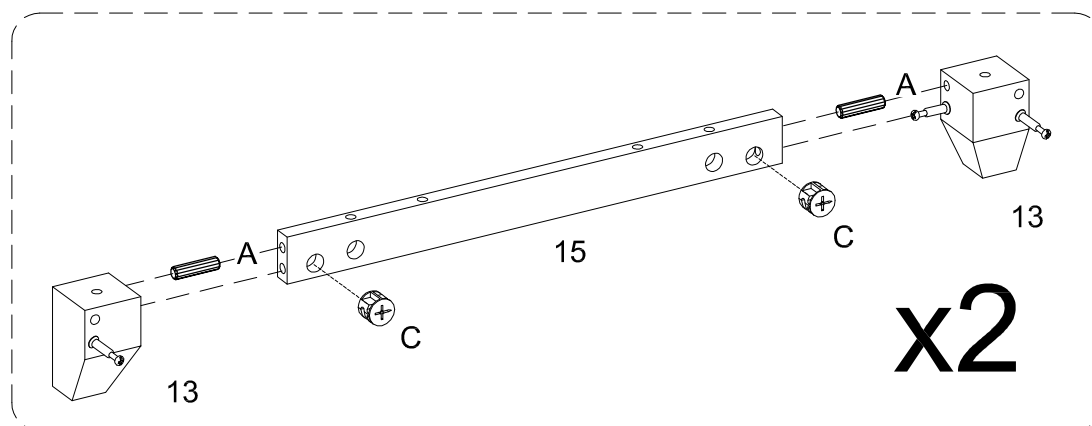
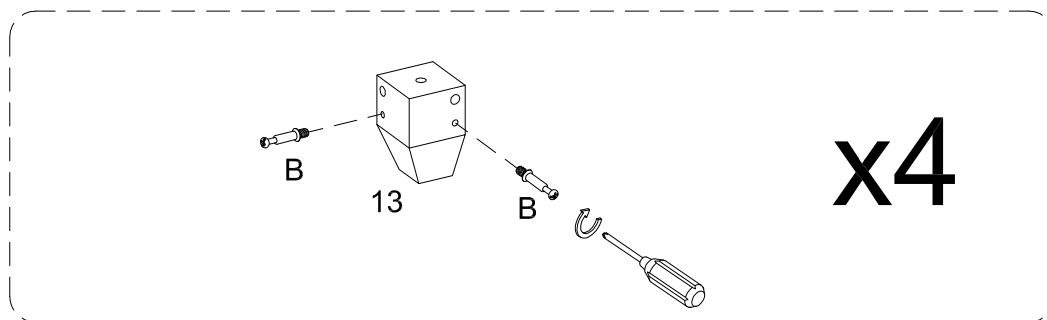
## Step 3



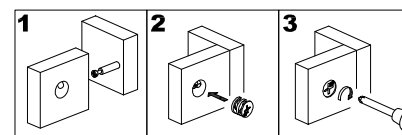
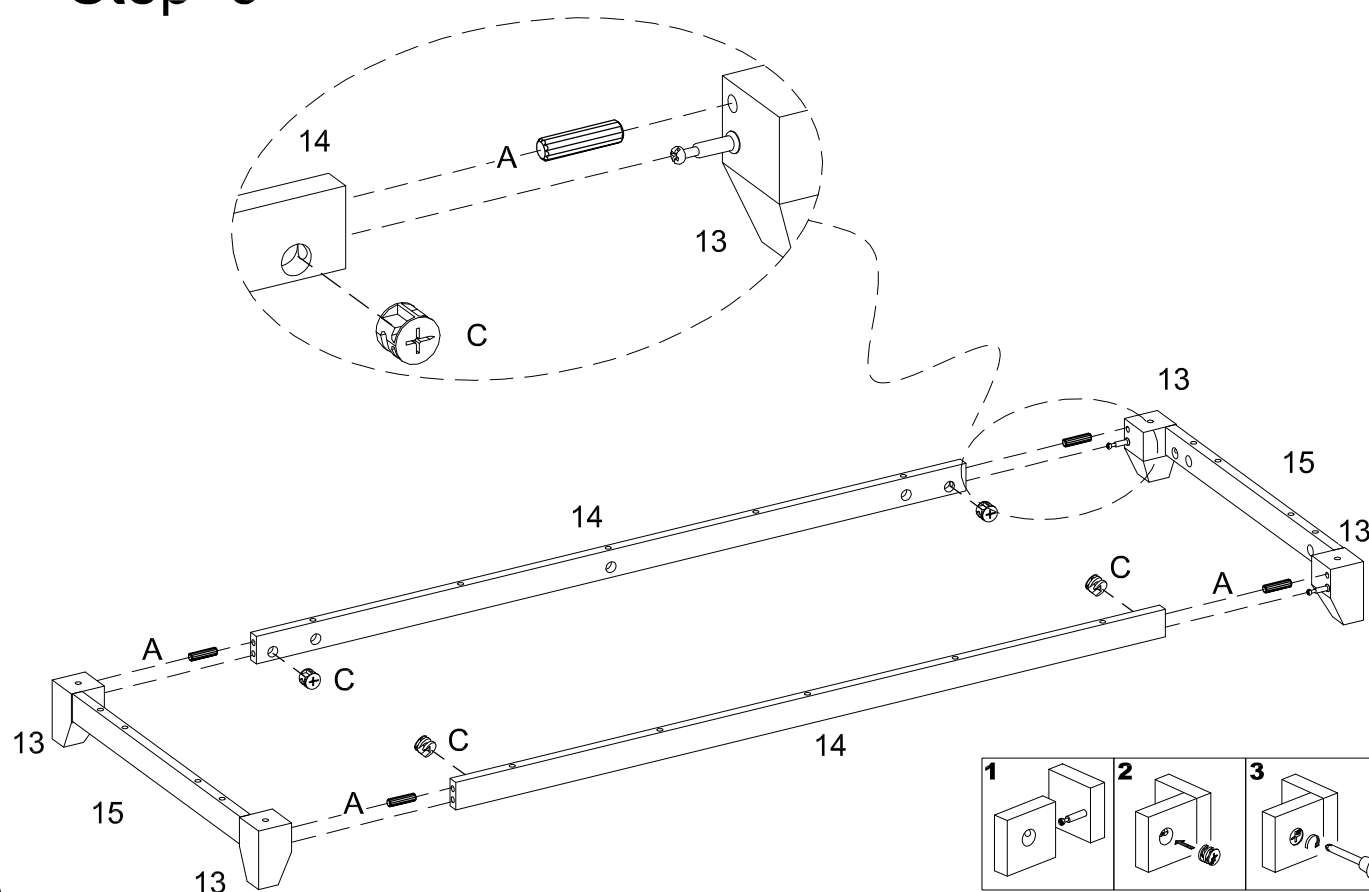
## Step 4



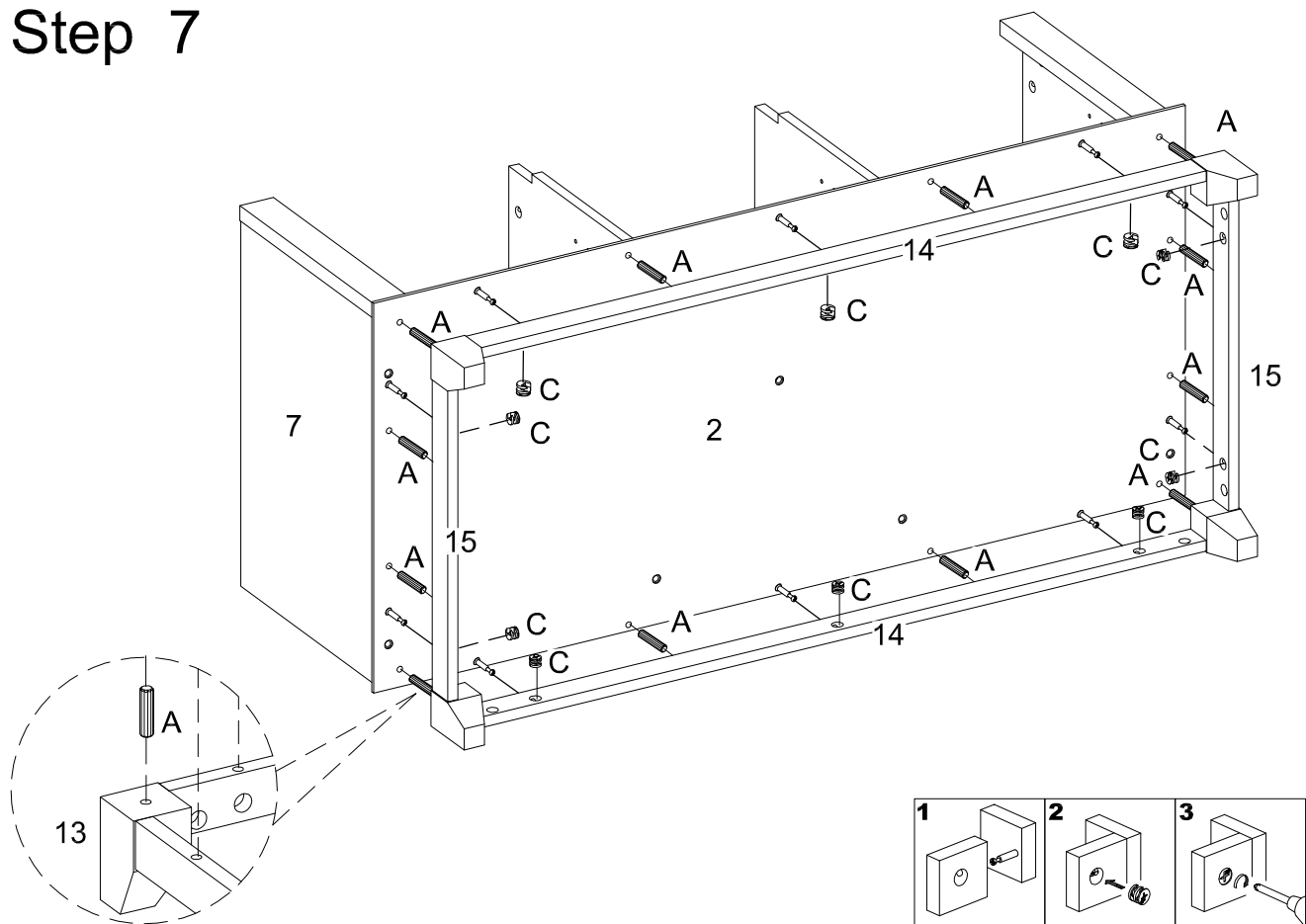
## Step 5



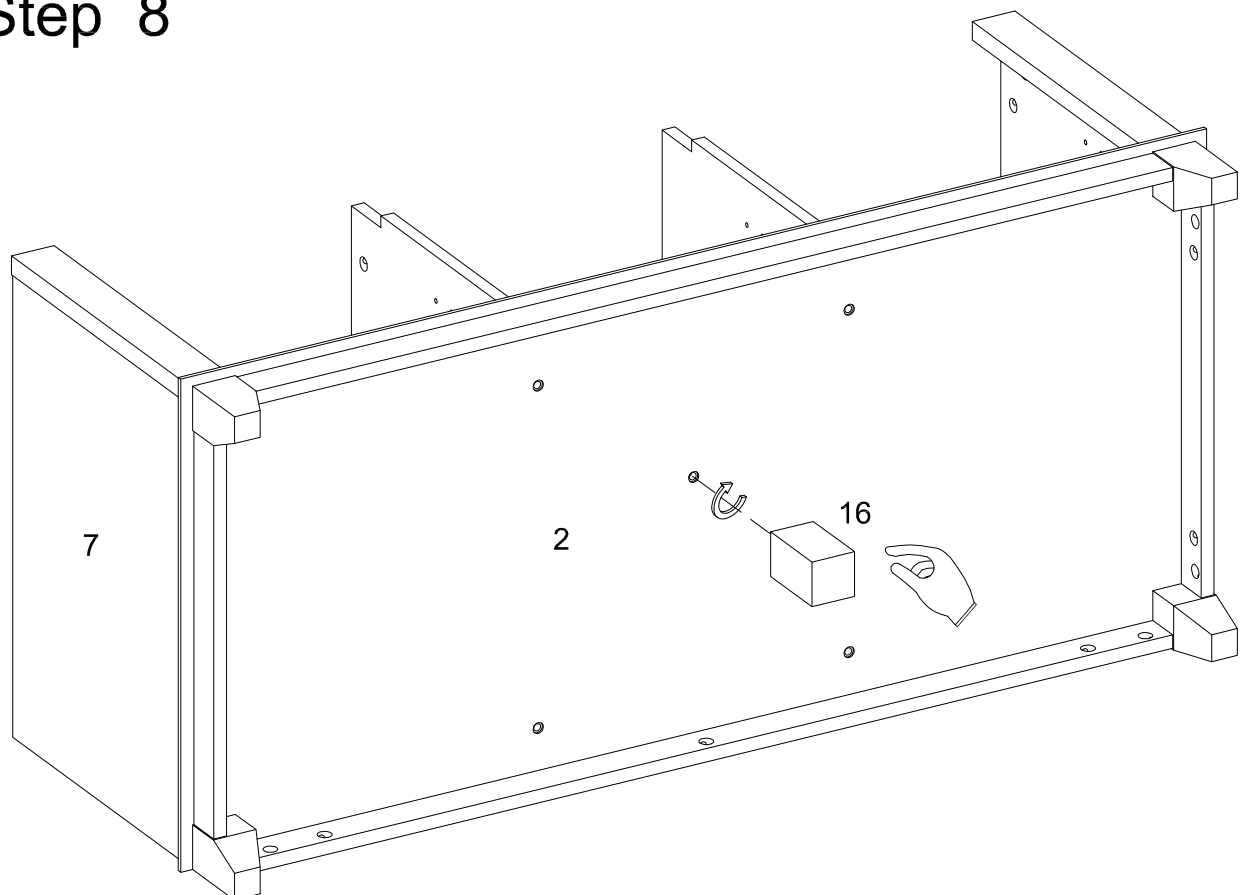
## Step 6



## Step 7

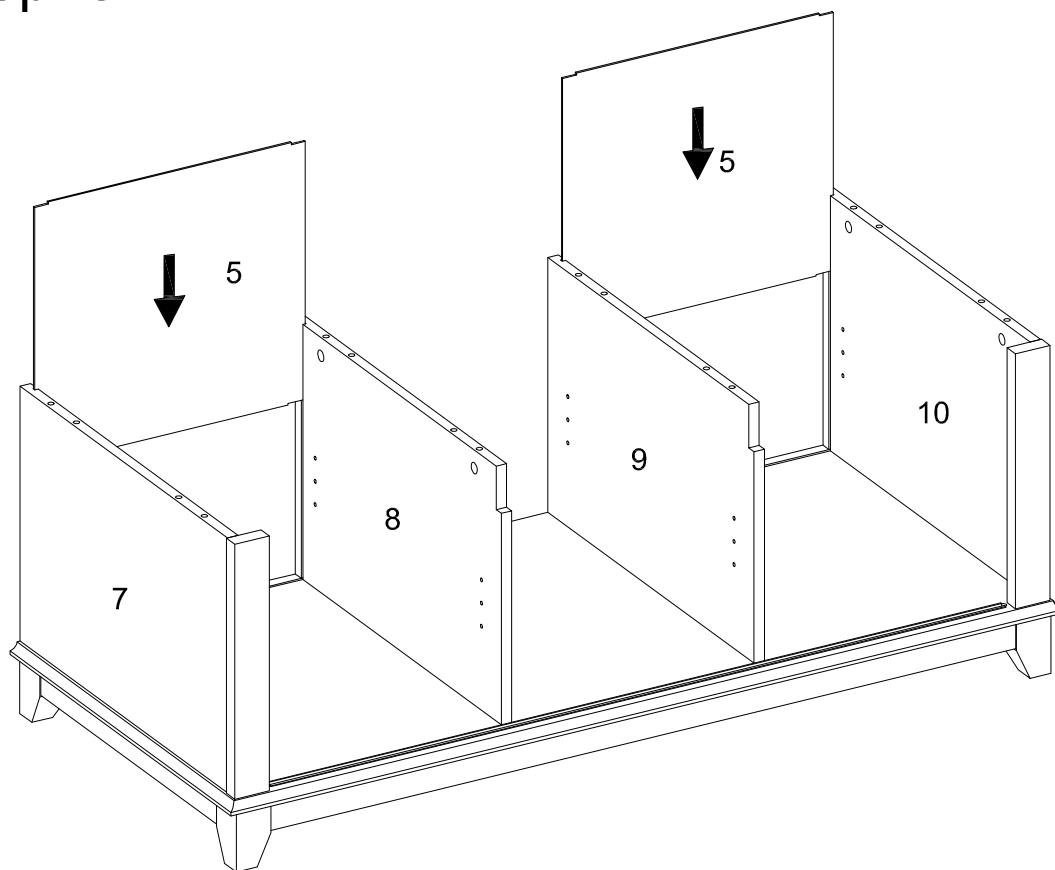


## Step 8

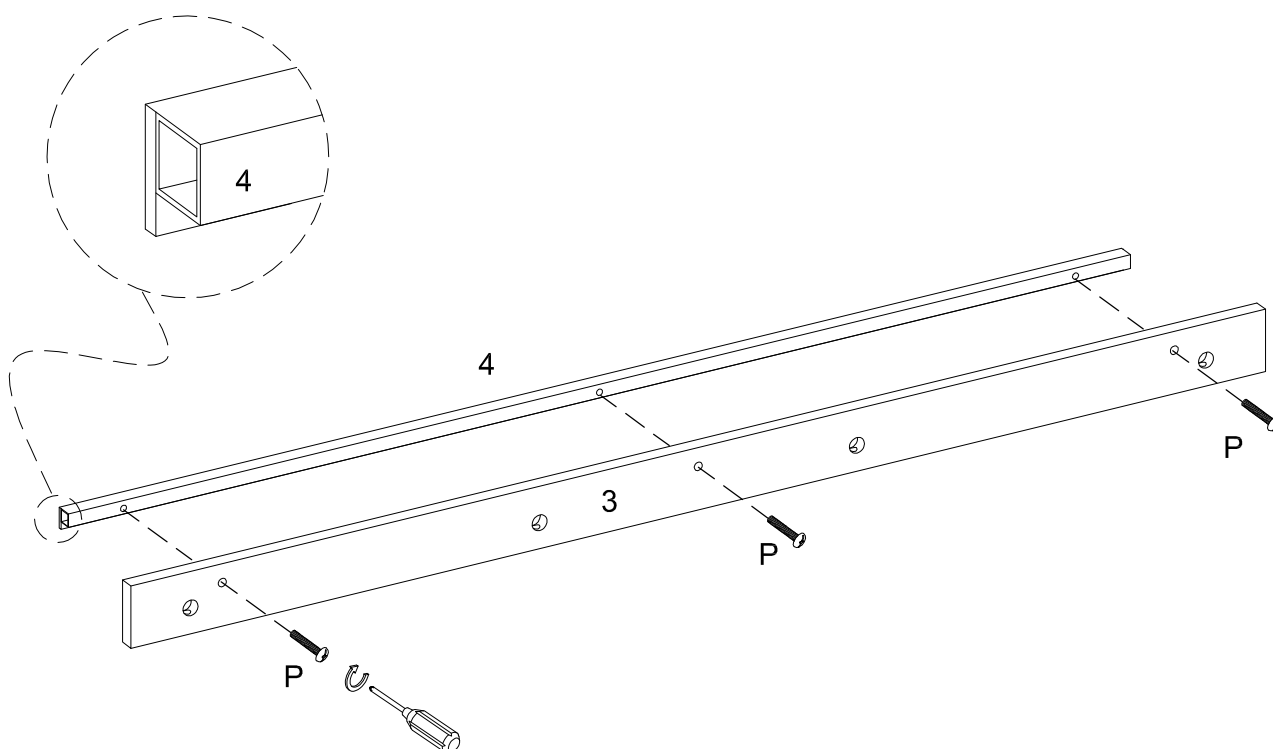




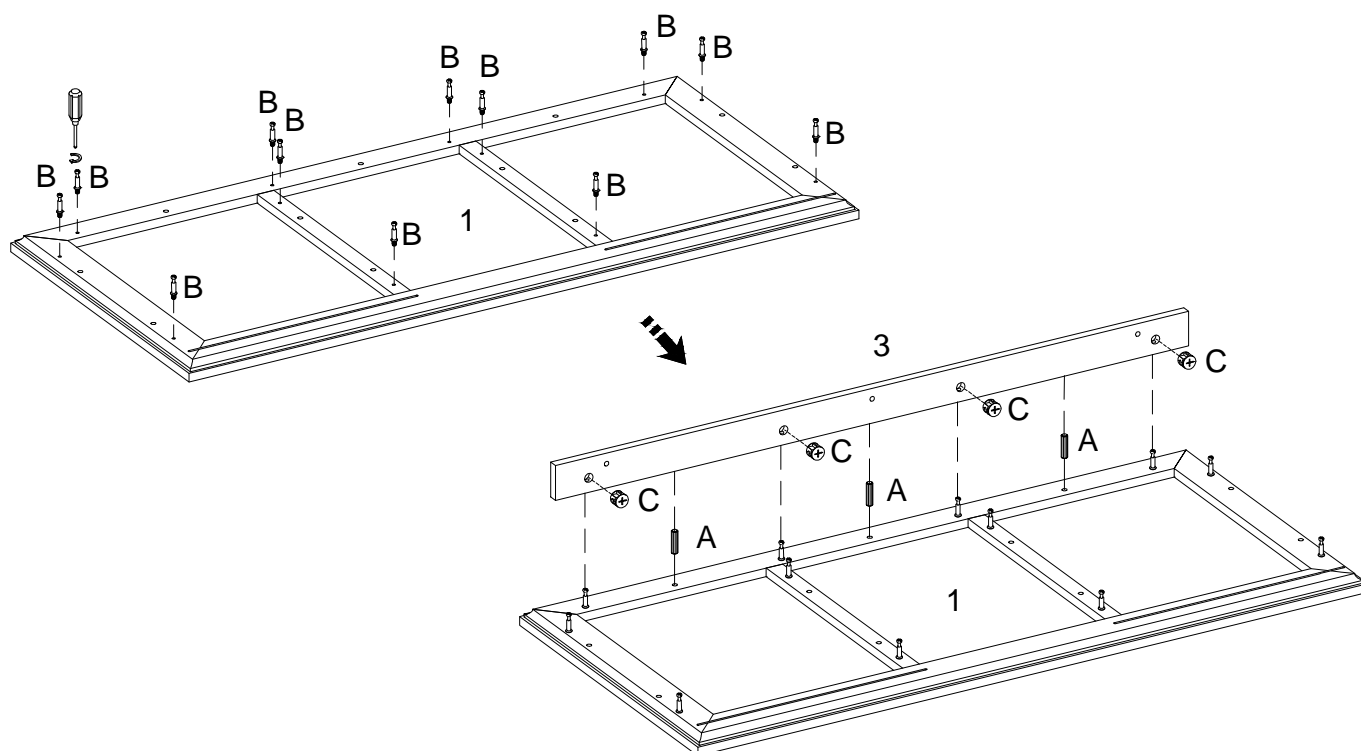
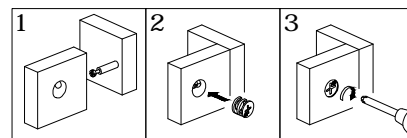
## Step 9



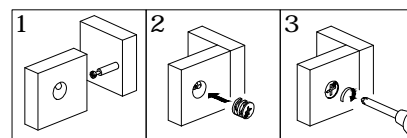
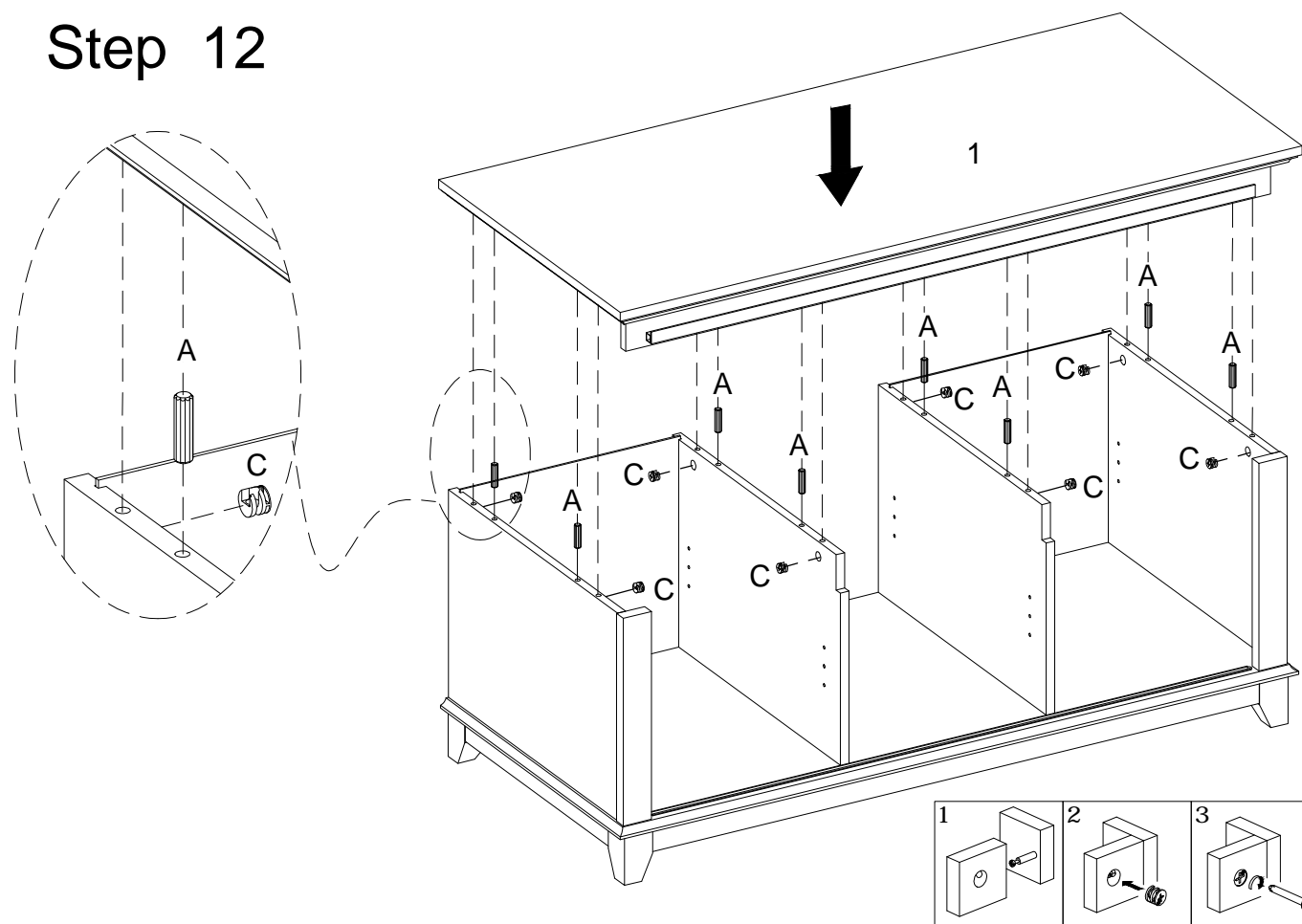
## Step 10



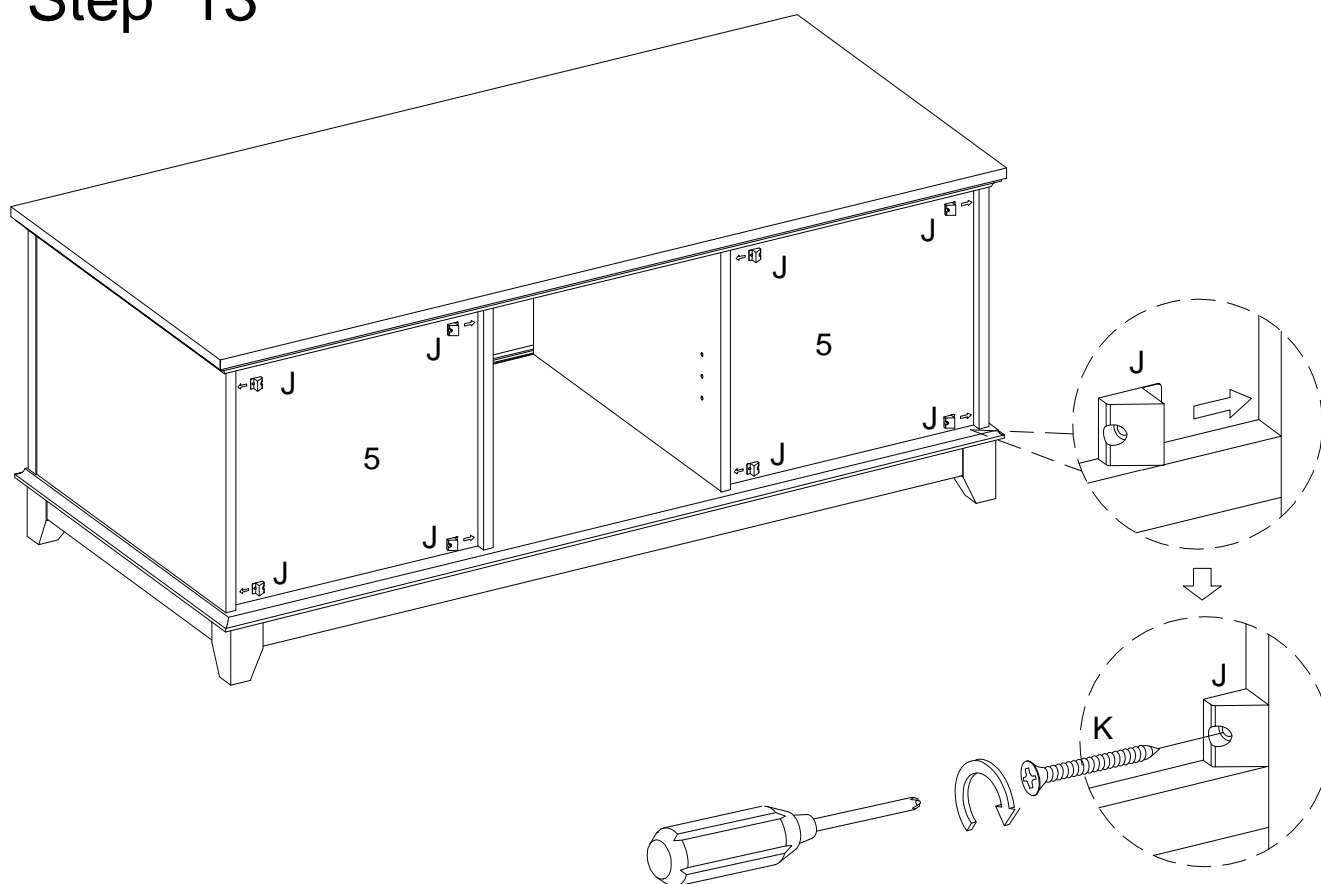
## Step 11



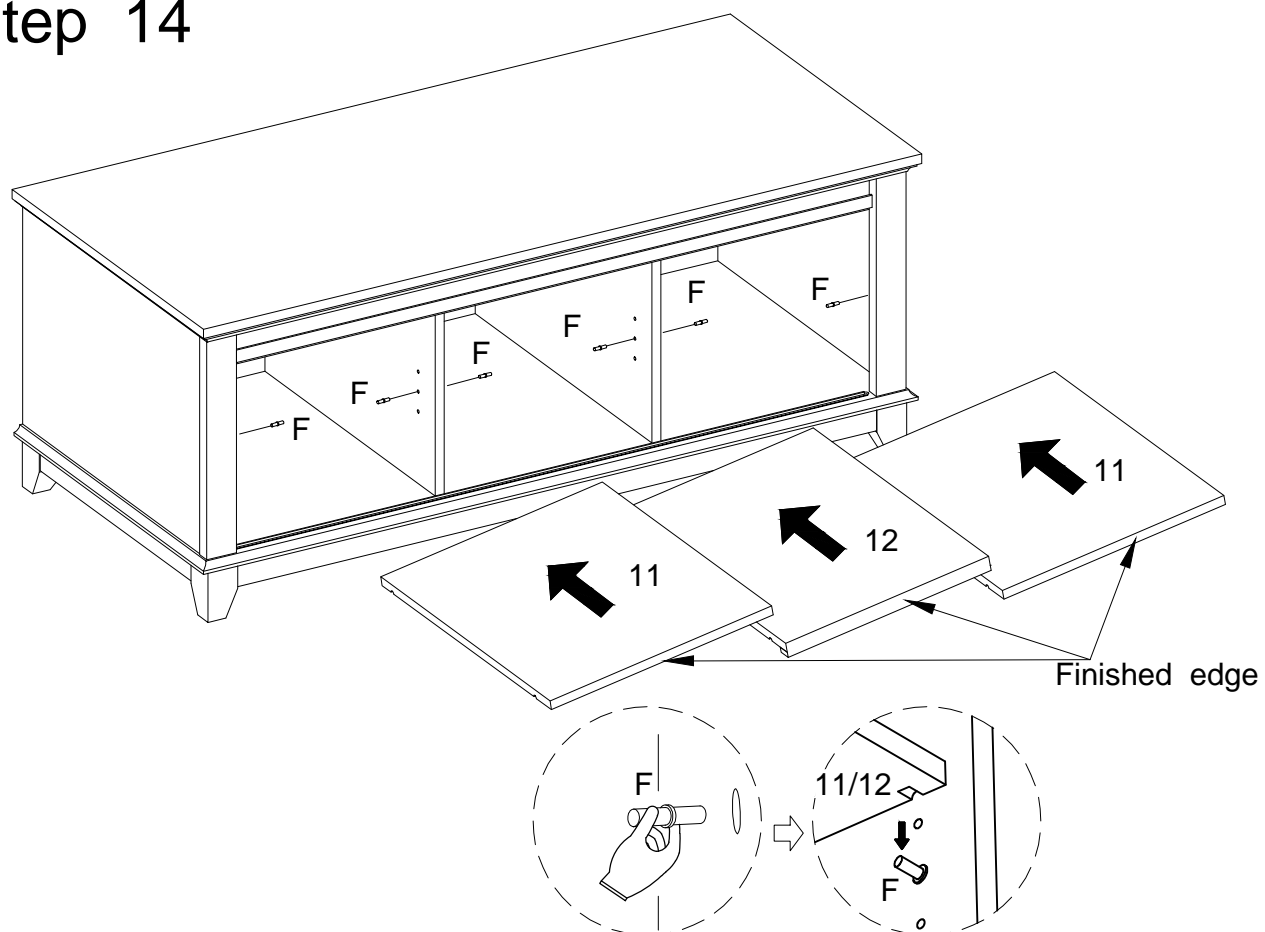
## Step 12



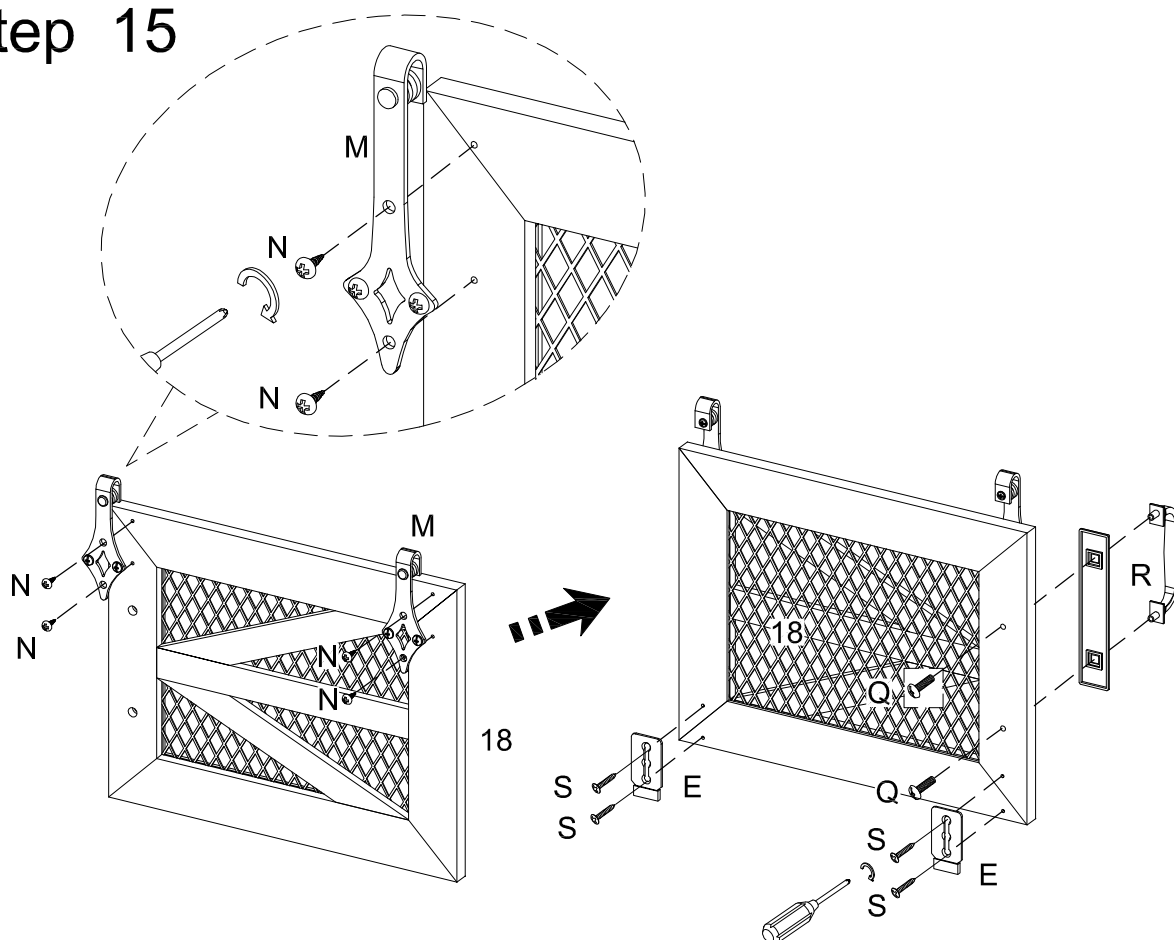
## Step 13



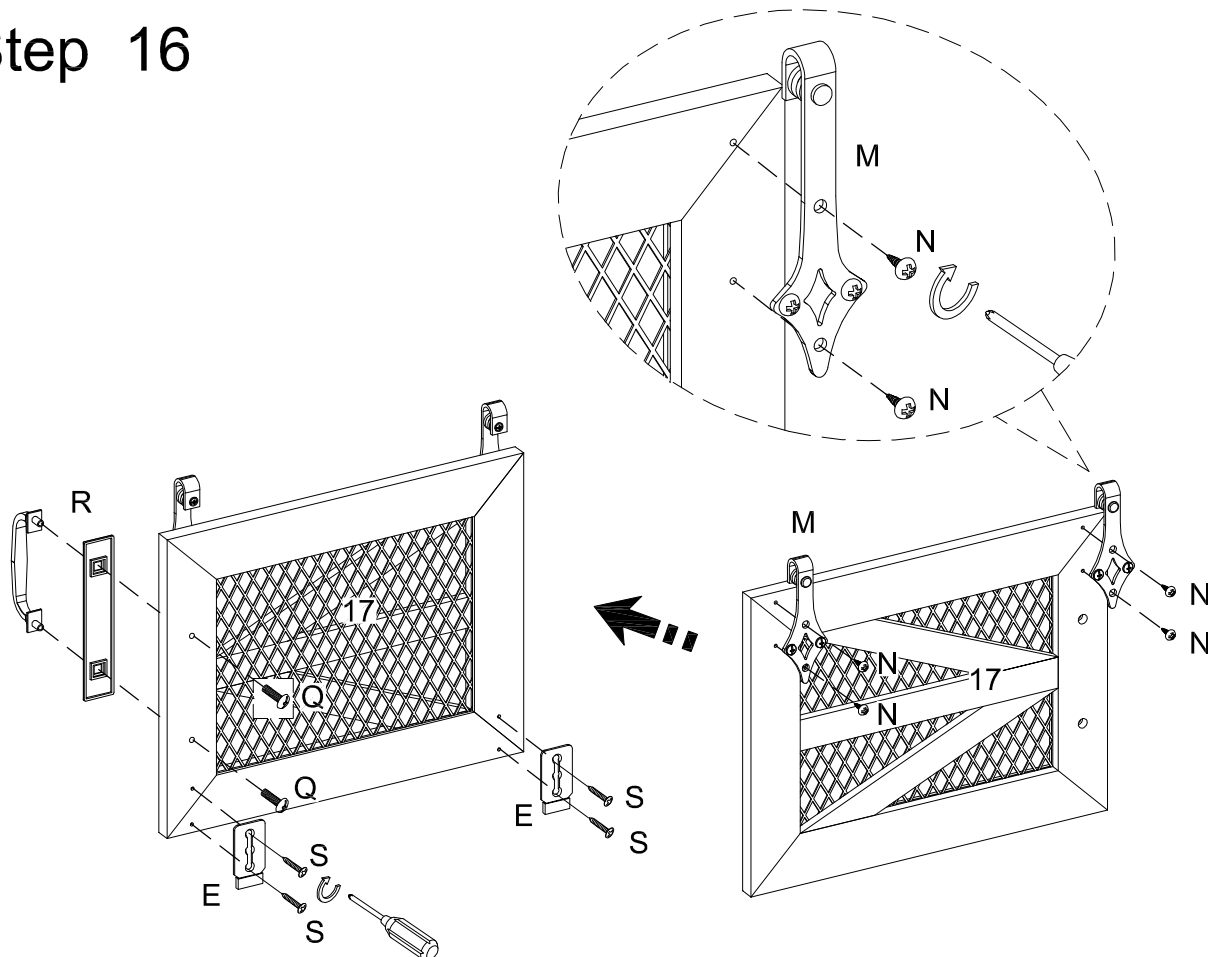
## Step 14



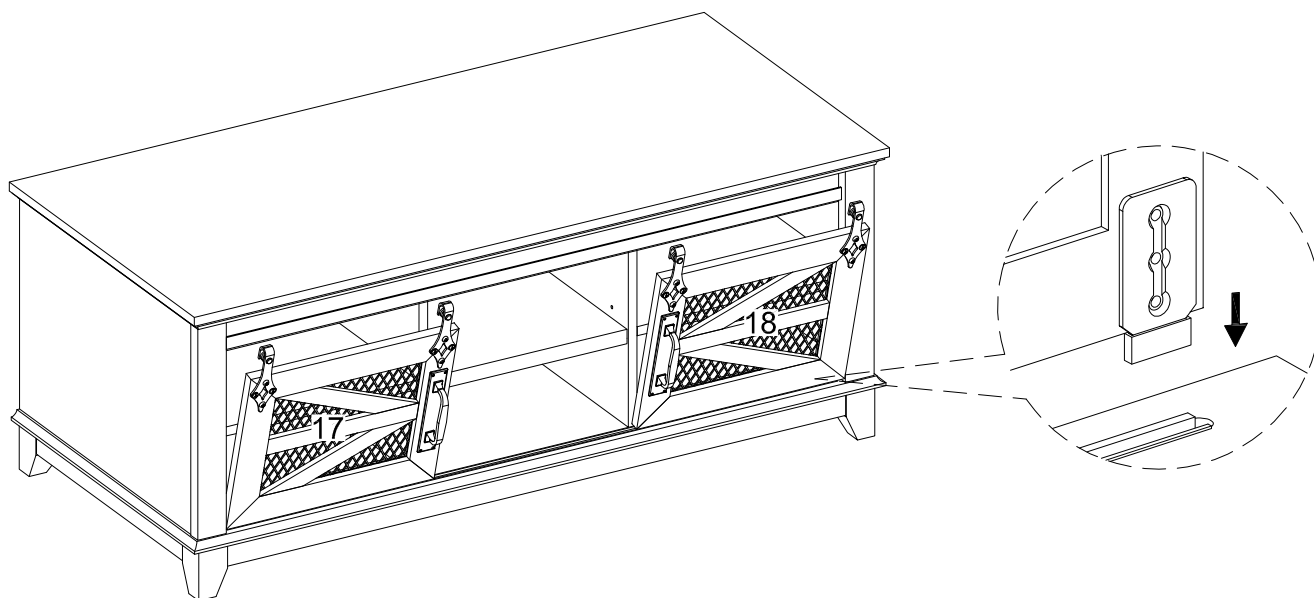
## Step 15



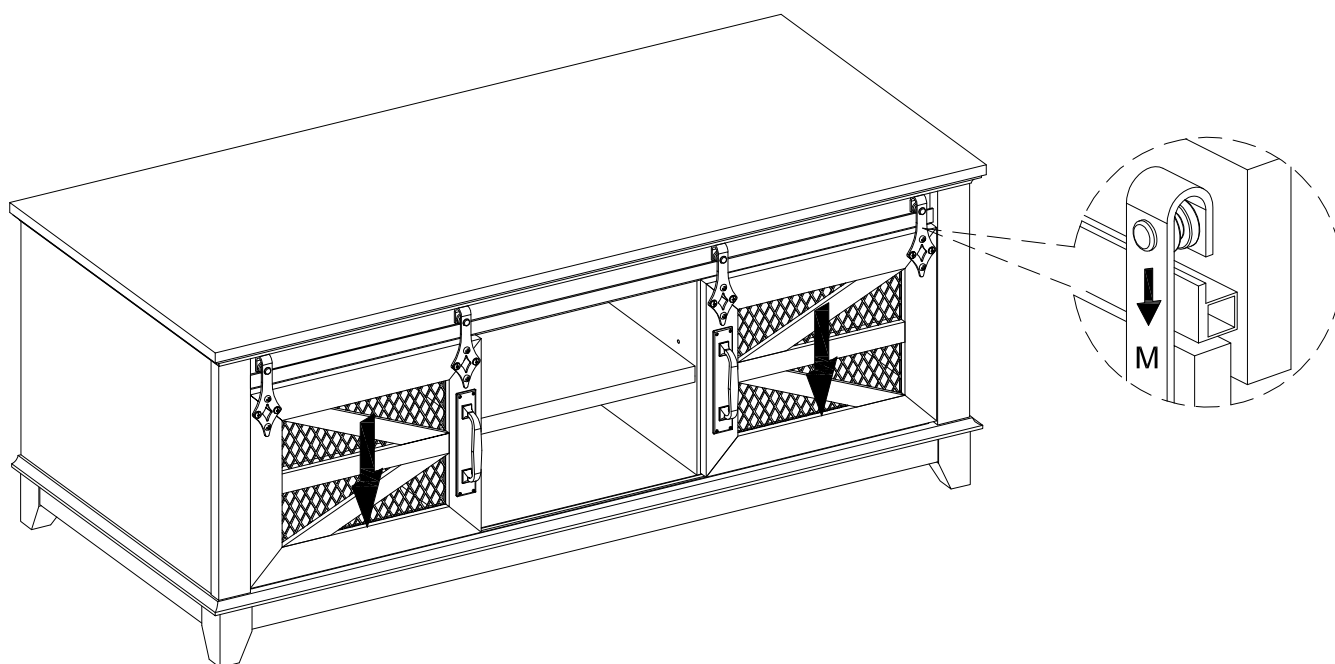
## Step 16



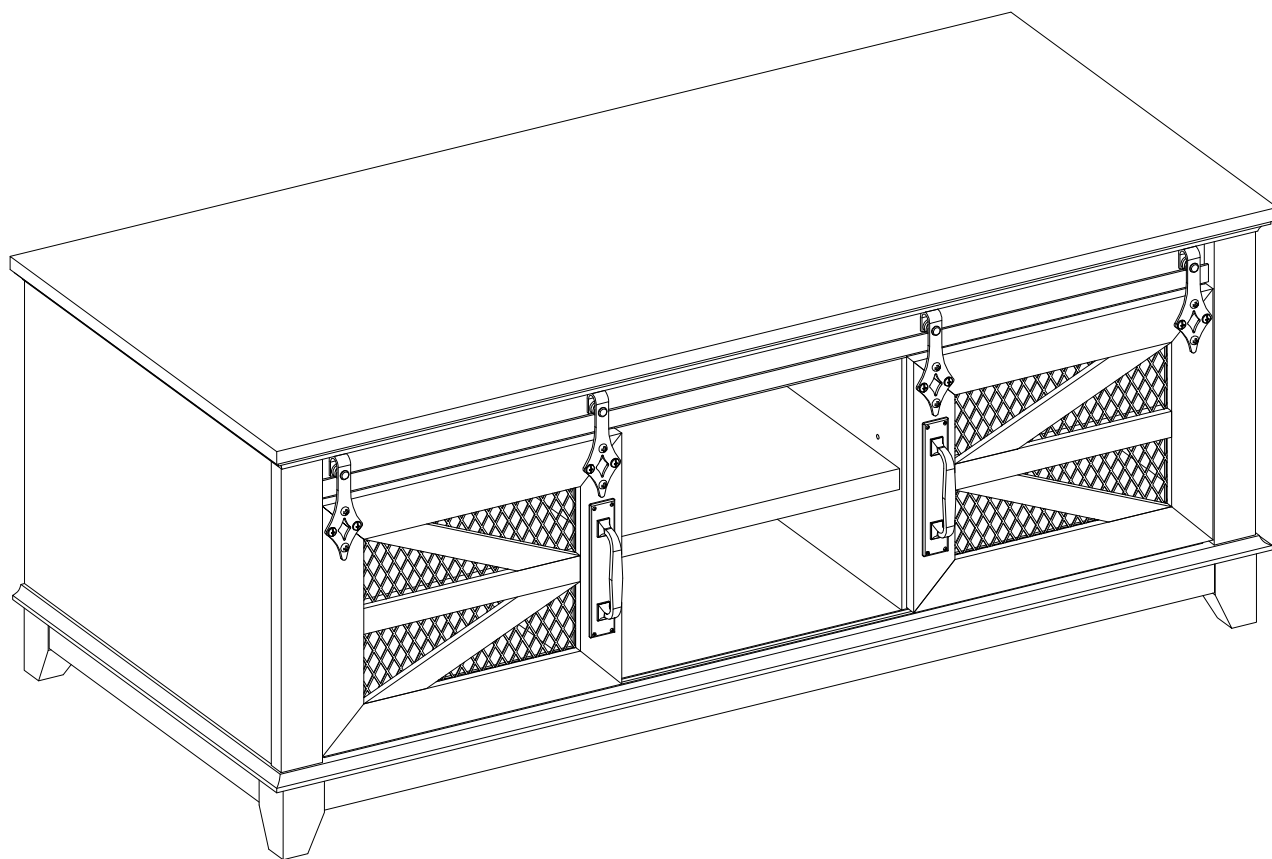
## Step 17



## Step 18



## Step 19



Final Assembly

