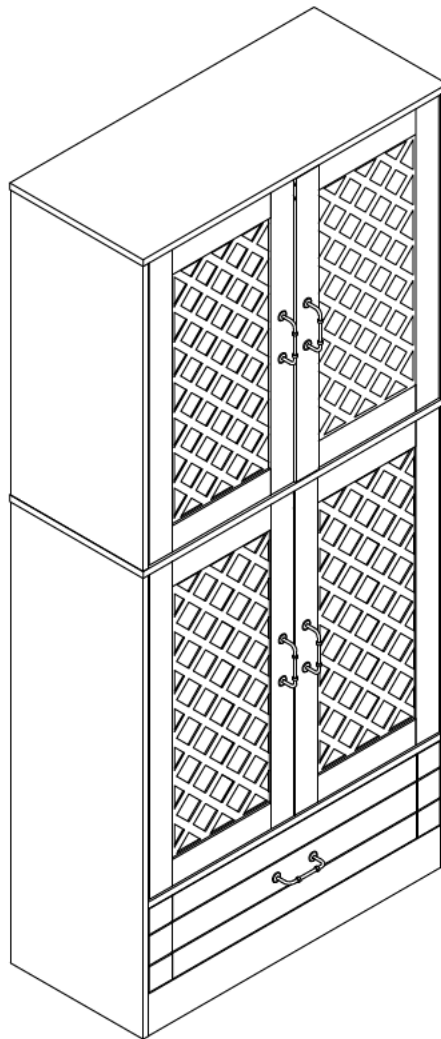


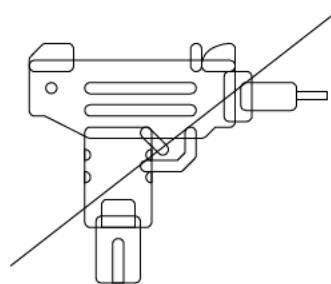
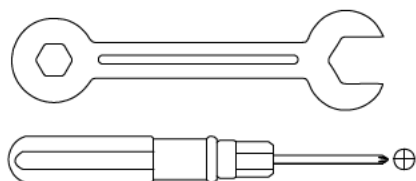
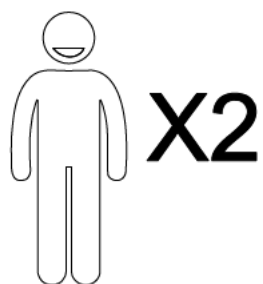
# Assembly Instructions



**Kitchen Pantry**

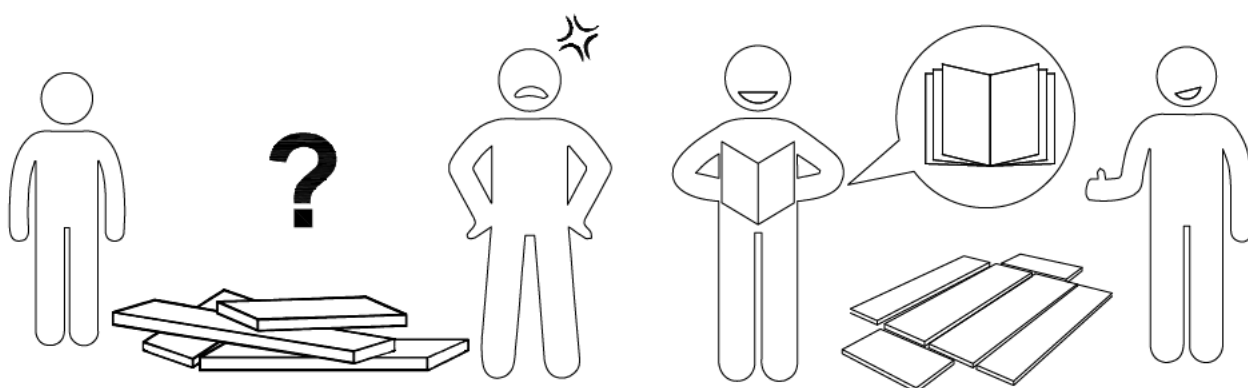
## **Warm Tips**

- 1. Carefully read these instructions and keep them for future reference.**
- 2. Check the parts list and confirm everything's there before starting assembly.**
- 3. When assembling, put all parts on a soft, smooth surface like a carpet to avoid scratches.**
- 4. Don't fully tighten screws until all parts are confirmed in place to avoid misalignment.**



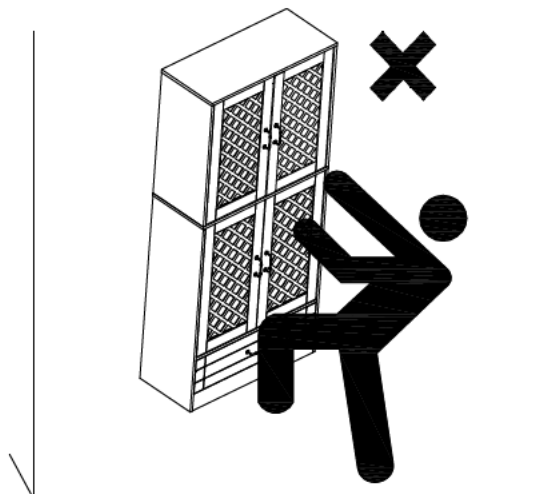
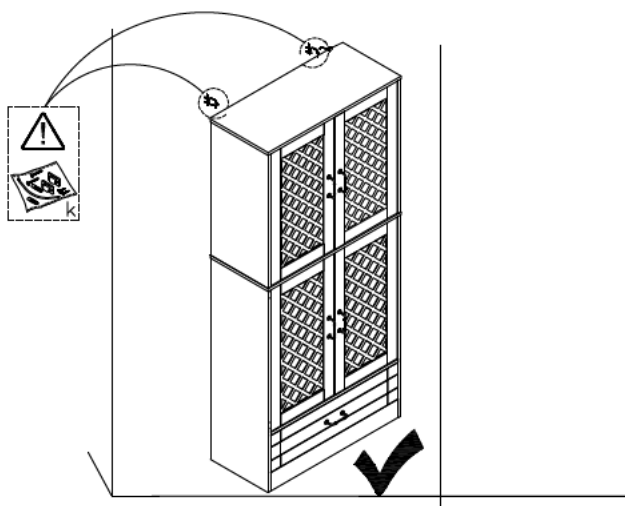
**We recommend using hand tools for assembly.**

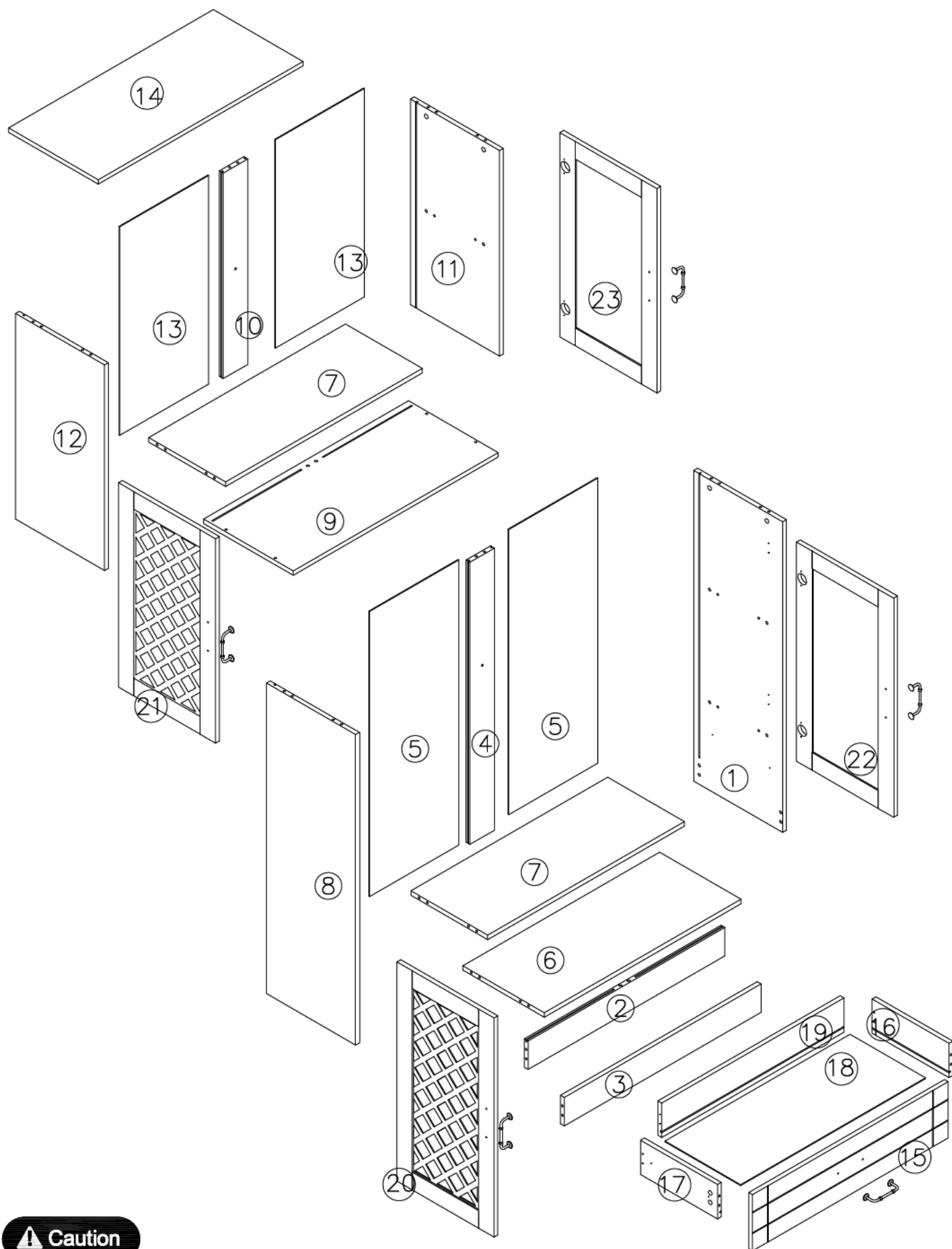
**If an electric screwdriver is used, reduce power and torque to avoid damage to the product.**



## **Install the Anti-Tip Straps**

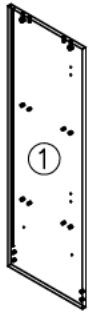
**Using the anti-tip straps can reduce the risk of tipping over, but can not eliminate it.**



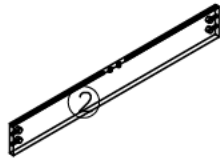


**⚠ Caution**

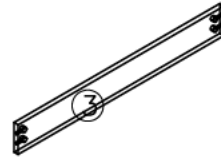
Make sure all parts are included. Most board parts are labeled or stamped on the raw edge. Contact us for a free replacement if you encounter any damaged or missing parts.



**1** 1pcs



**2** 1pcs



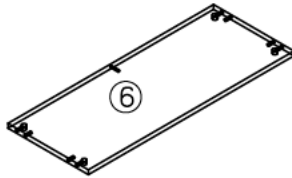
**3** 1pcs



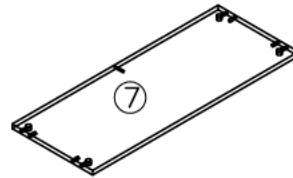
**4** 1pcs



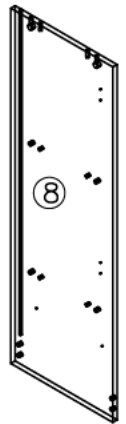
**5** 2pcs



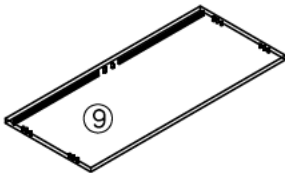
**6** 1pcs



**7** 2pcs



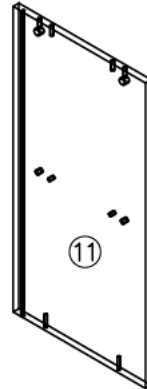
**8** 1pcs



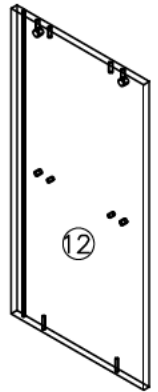
**9** 1pcs



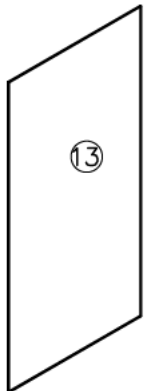
**10** 1pcs



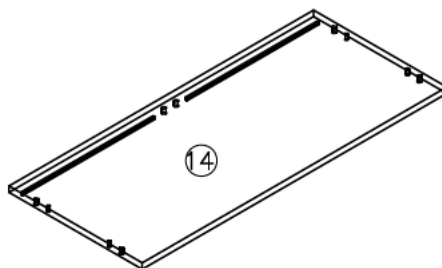
**11** 1pcs



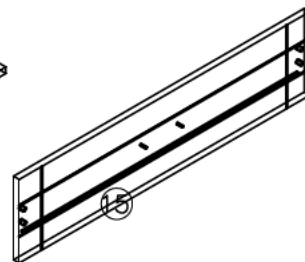
**12** 1pcs



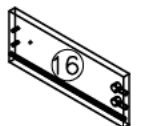
**13** 2pcs



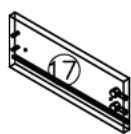
**14** 1pcs



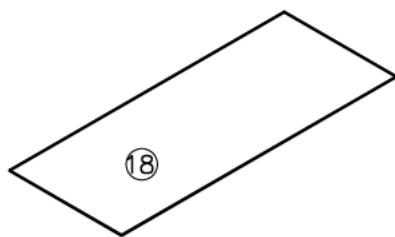
**15** 1pcs



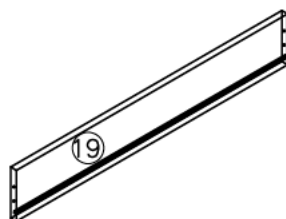
**16** 1pcs



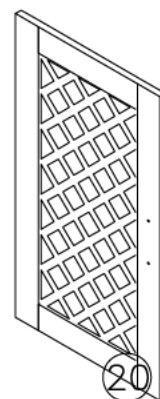
**17** 1pcs



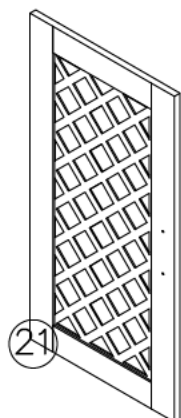
**18** 1pcs



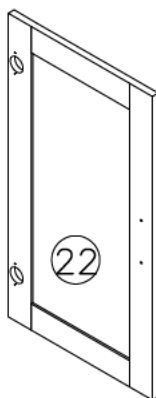
**19** 1pcs



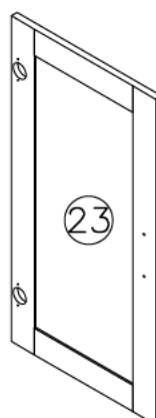
**20** 1pcs



**21** 1pcs



**22** 1pcs



**23** 1pcs

## Hardware List

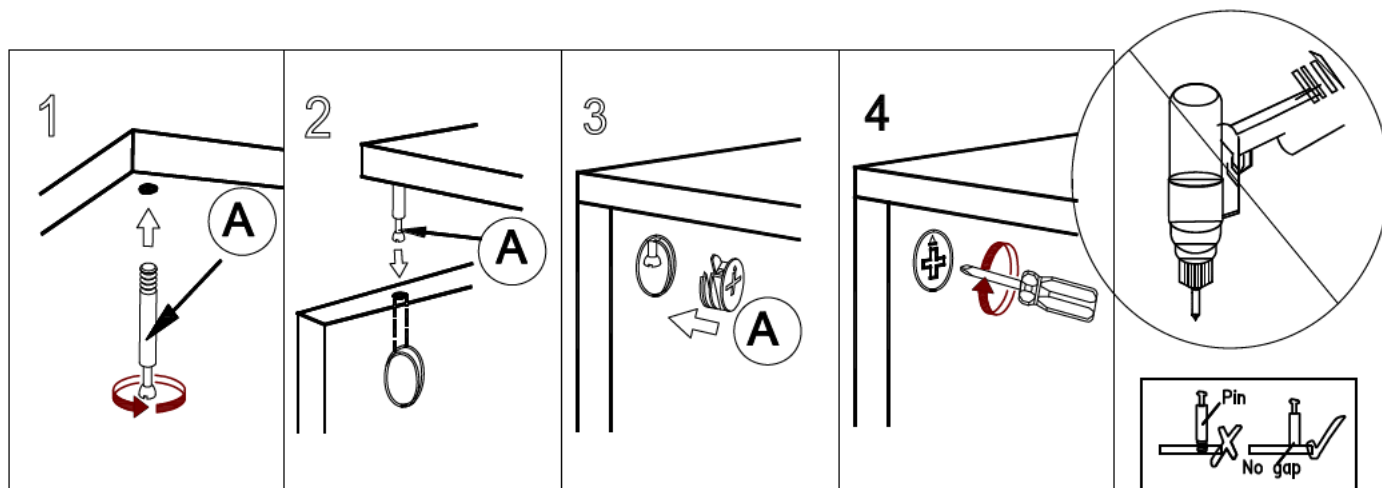
 <b>M6X35MM</b> <b>A</b> 40pcs	 <b>Ø8X30MM</b> <b>B</b> 20pcs	 <b>Ø3.5X35MM</b> <b>C</b> 4pcs	 <b>Ø3.5X14MM</b> <b>D</b> 82pcs	 <b>96#</b> <b>E</b> 5pcs	 <b>Ø4X18MM</b> <b>F</b> 10pcs	 <b>14X12X10MM</b> <b>G</b> 24pcs
 <b>Ø7X38MM</b> <b>H</b> 7pcs	 <b>J</b> 8pcs	 <b>K</b> 2pcs	 <b>L</b> Screwdriver	 <b>D X6</b> <b>M</b> 8pcs	 <b>300MM</b> <b>N</b> 1pcs	

## Installation of Cams and Pins

Screw the pin into the hole. To set the cams correctly, ensure that the arrow on the cam is opening

to the hole of the pin it is locking. Lock the cam by turning the cam head with a screwdriver until it

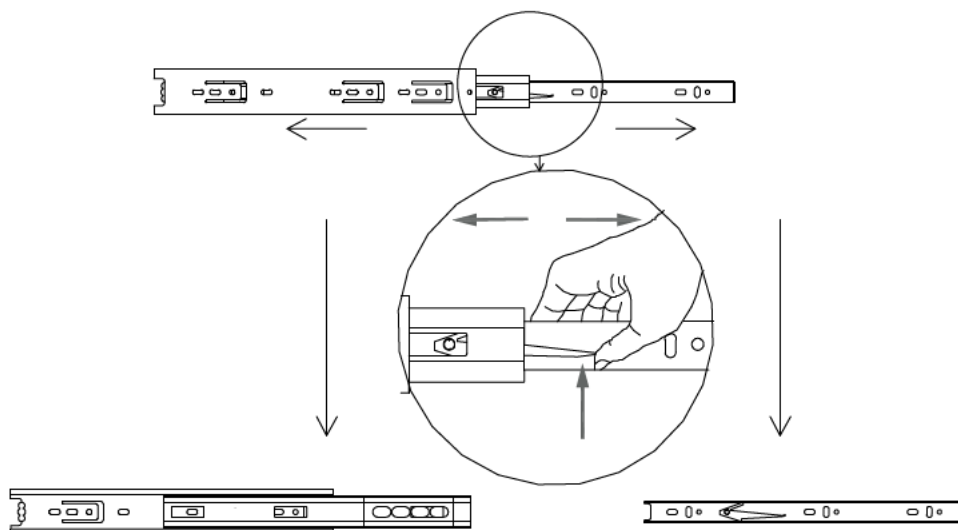
is tightened. Please do not use an electric screwdriver to assemble the unit.



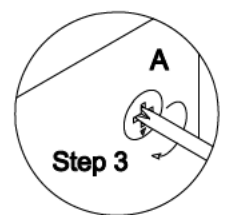
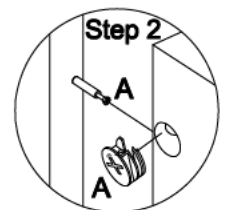
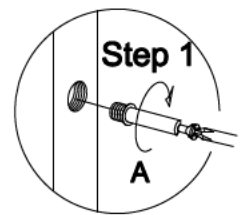
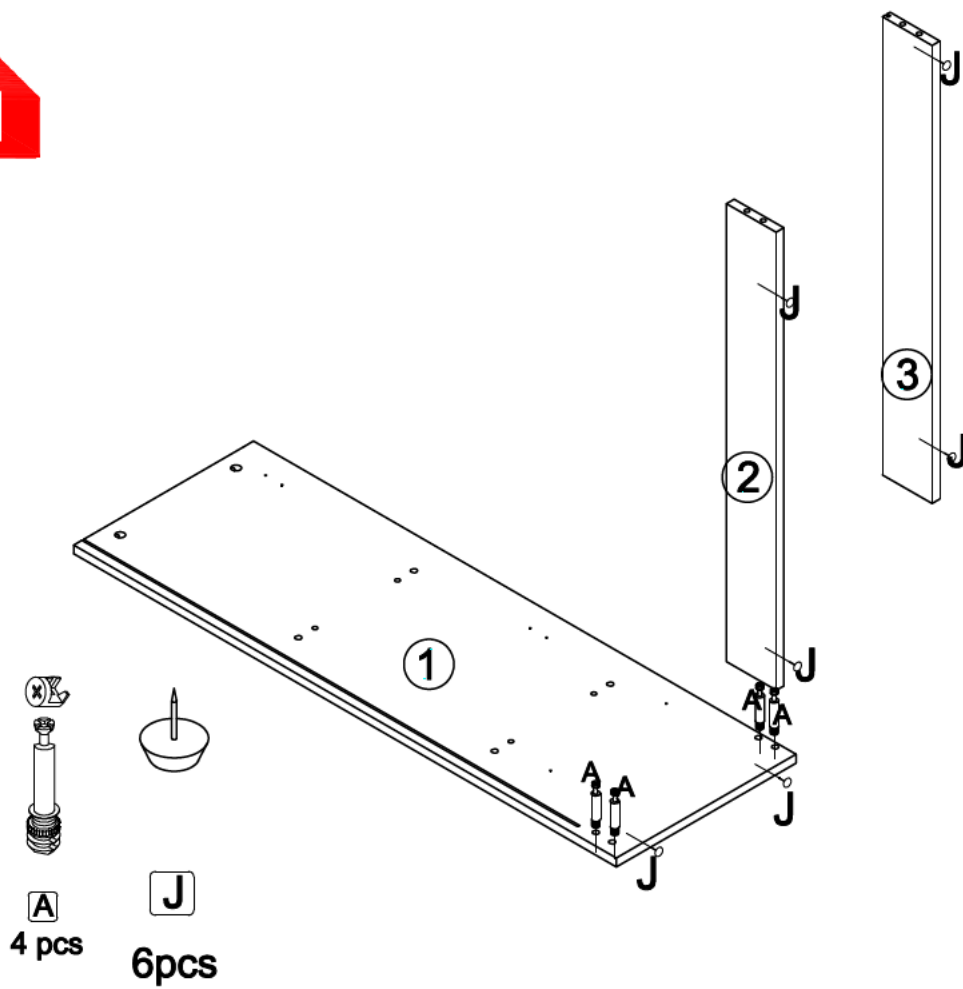
Read each step carefully before starting. It is very important that each step of instruction is

performed in the correct order. If these steps are not followed in sequence, assembly

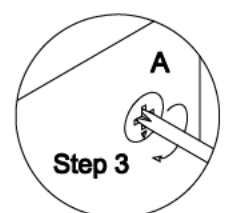
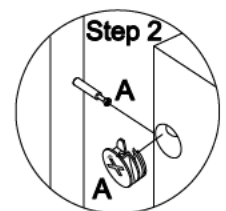
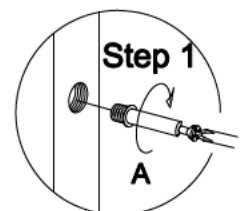
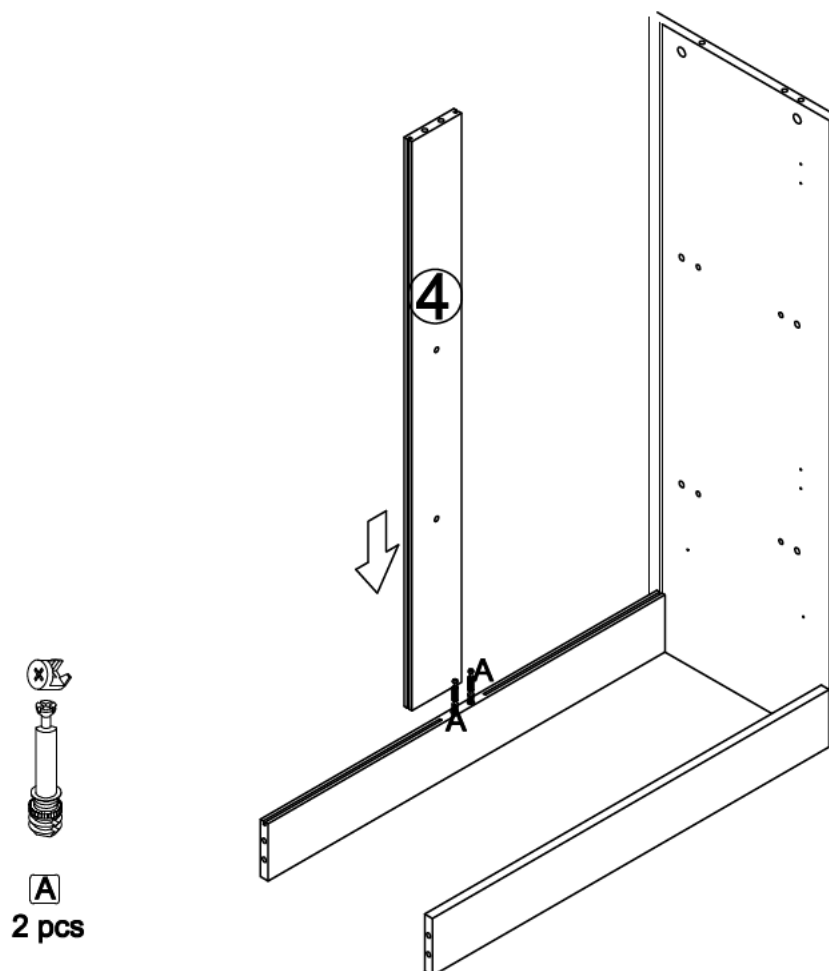
difficulties will occur.



1

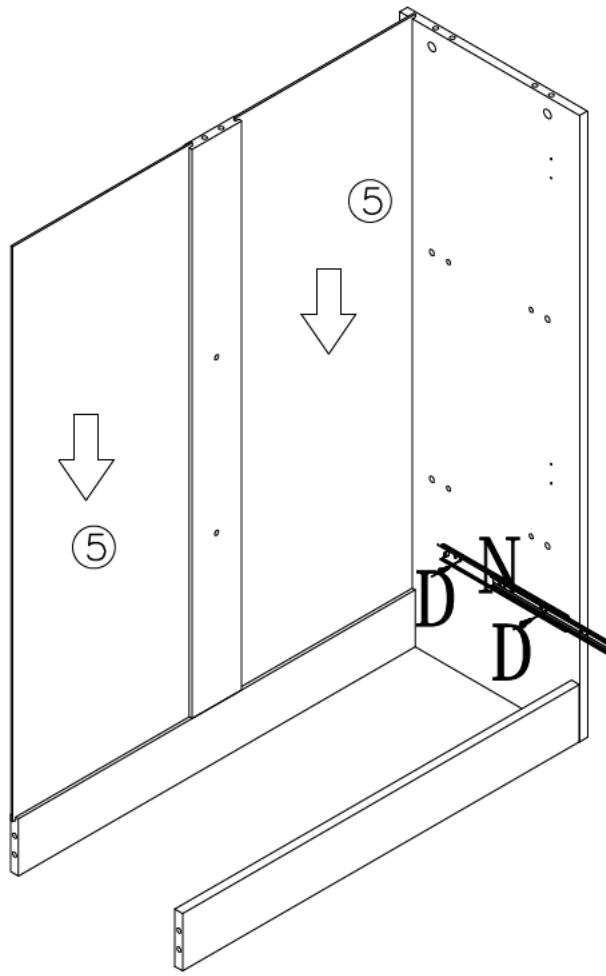


2



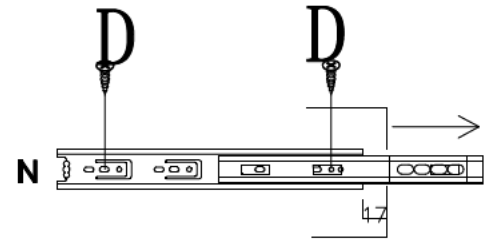


3

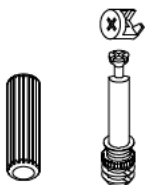
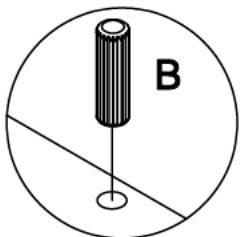
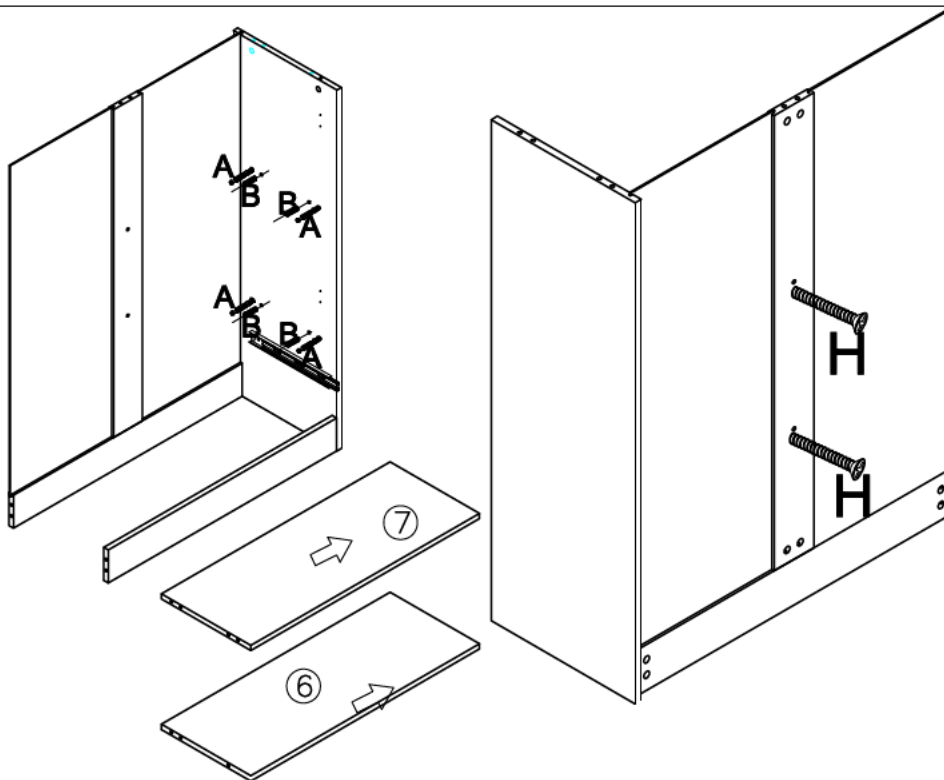


D

2pcs



4

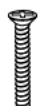


B

4 pcs

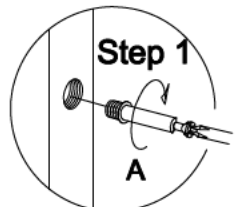
A

4 pcs



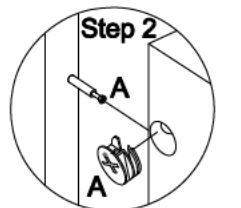
H

2pcs



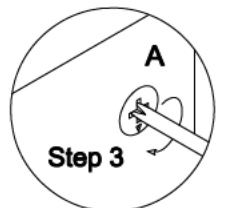
Step 1

A



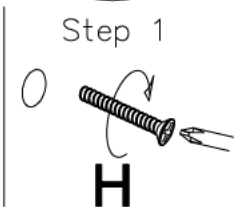
Step 2

A



Step 3

A

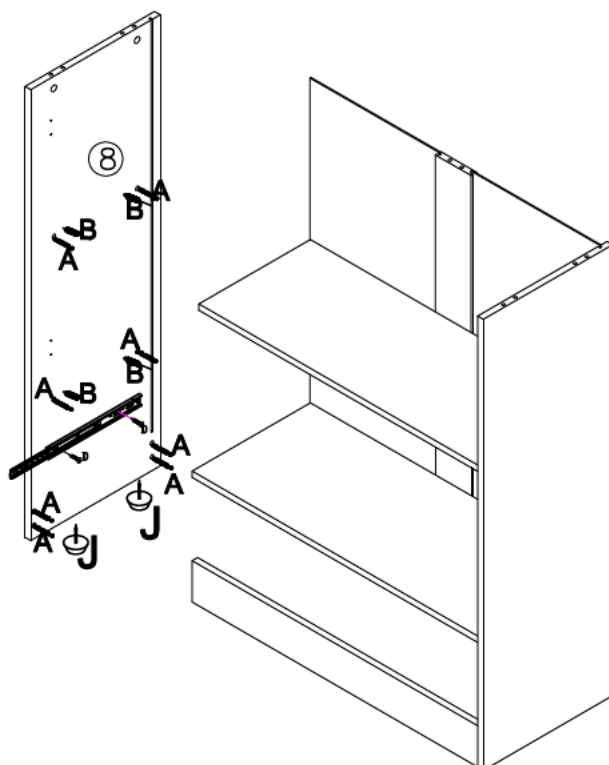


Step 1

H

P-08

5

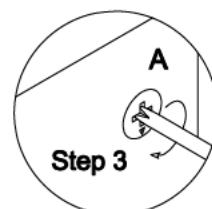
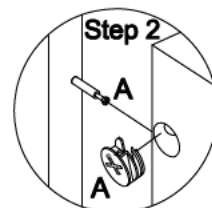
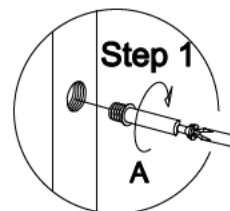
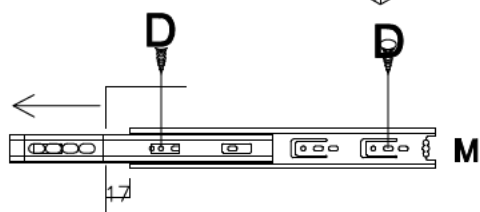


J

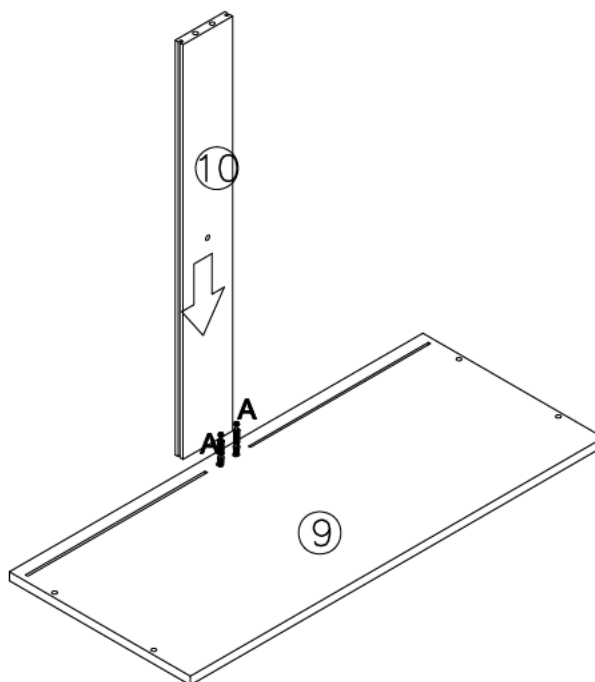
2pcs

D

2pcs

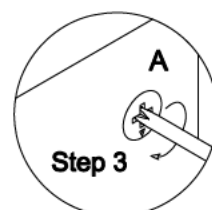
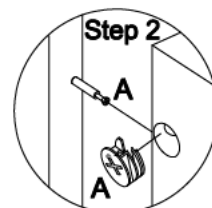
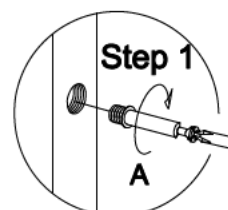


6

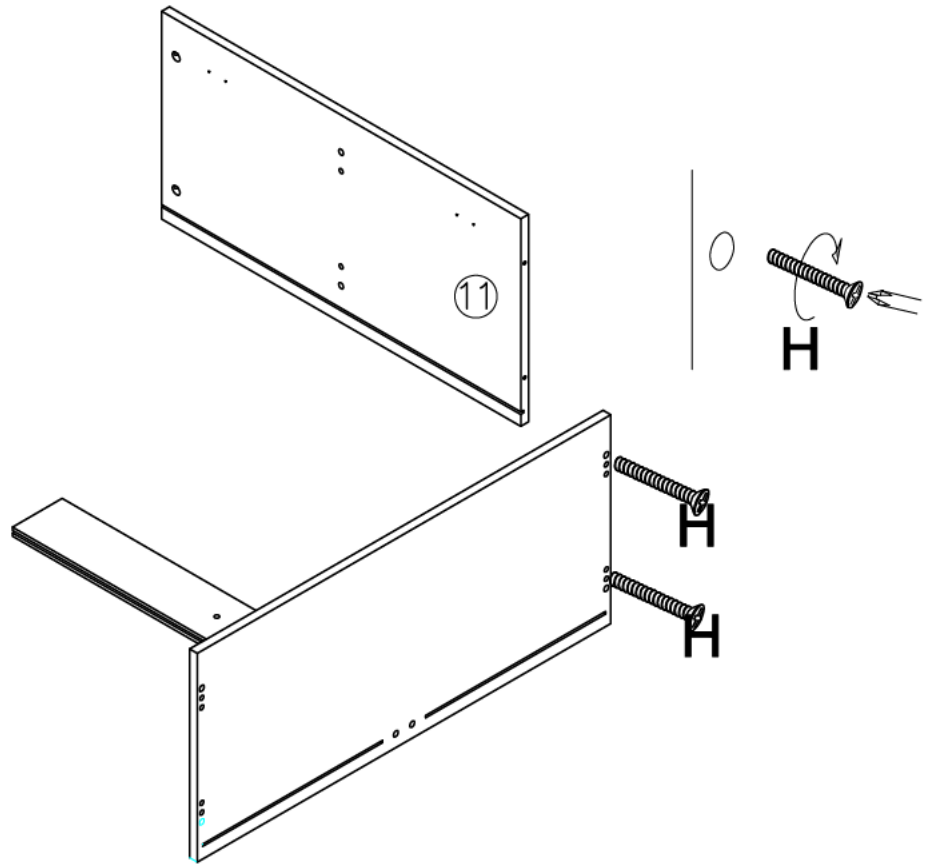


A

2 pcs

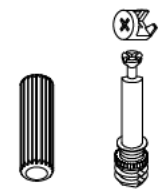
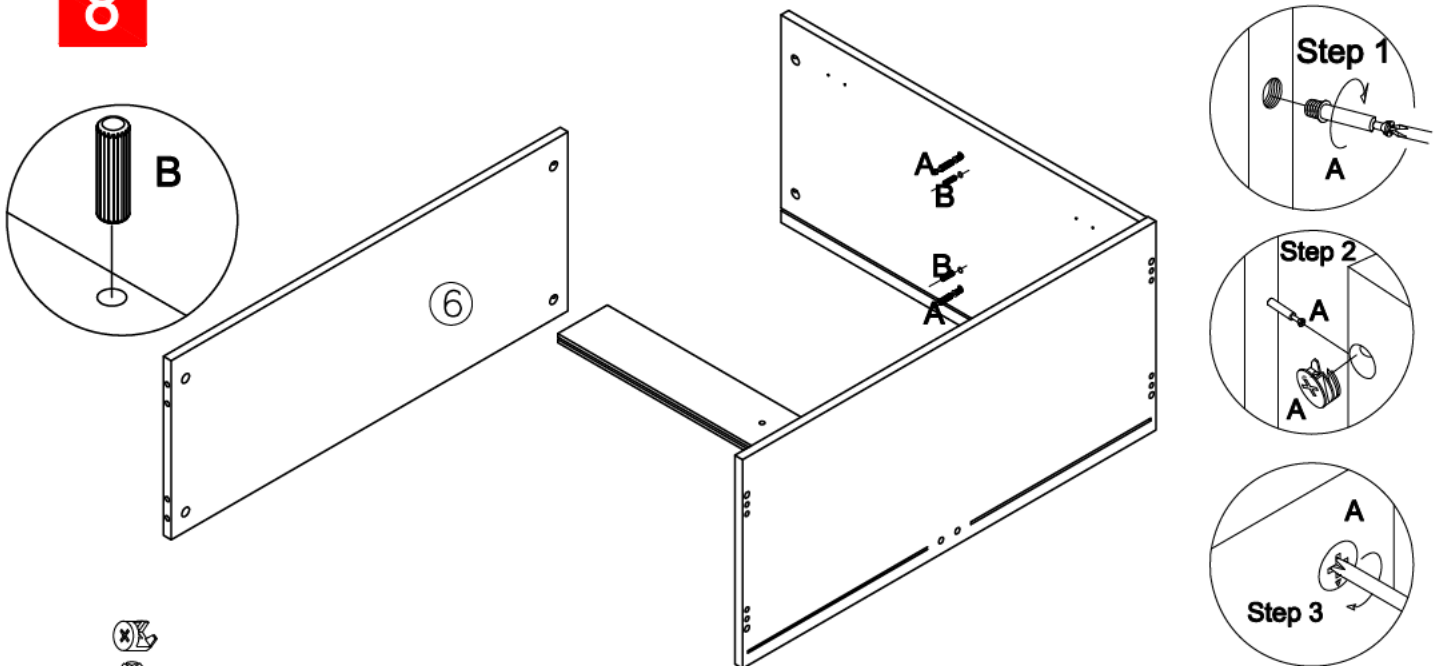


7



H  
2pcs

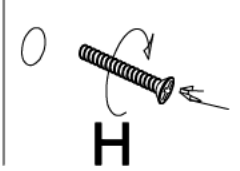
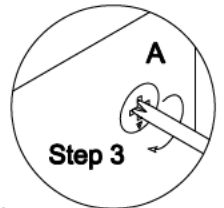
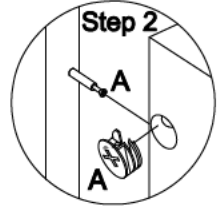
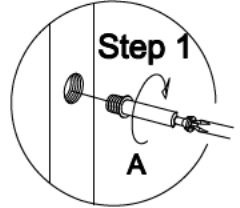
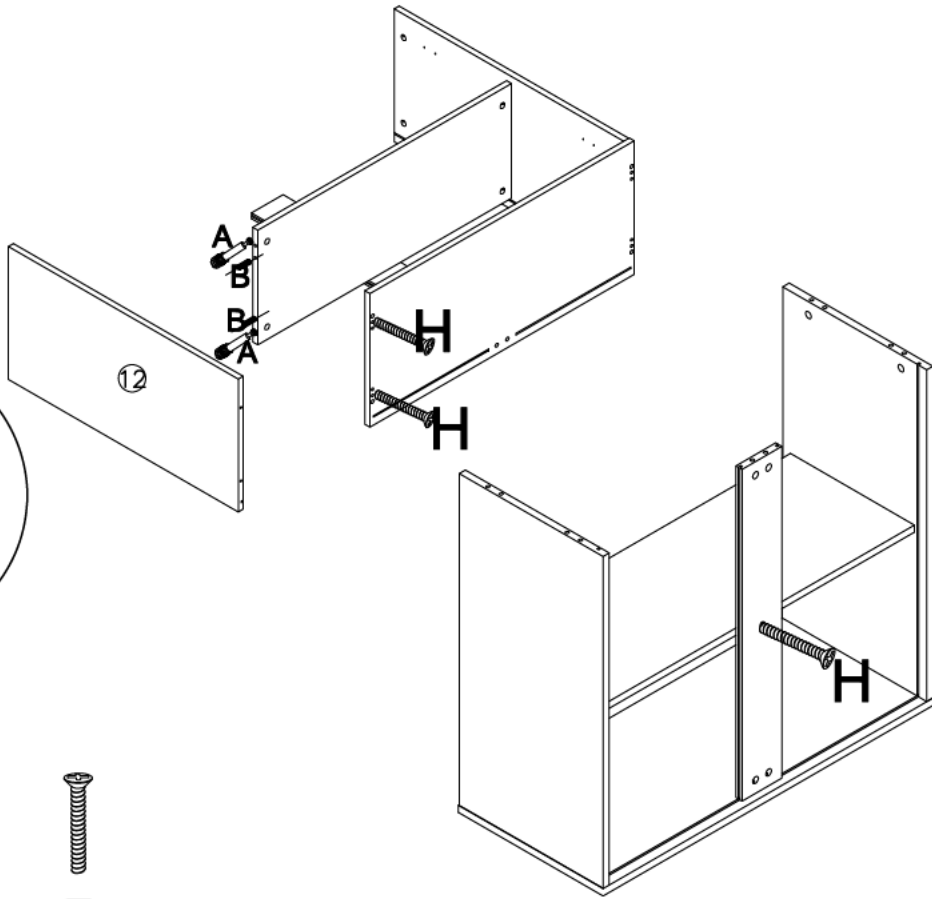
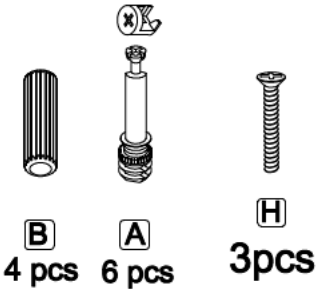
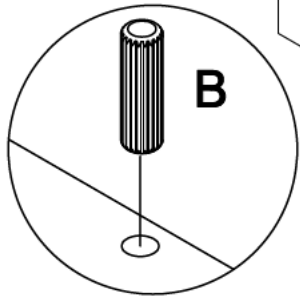
8



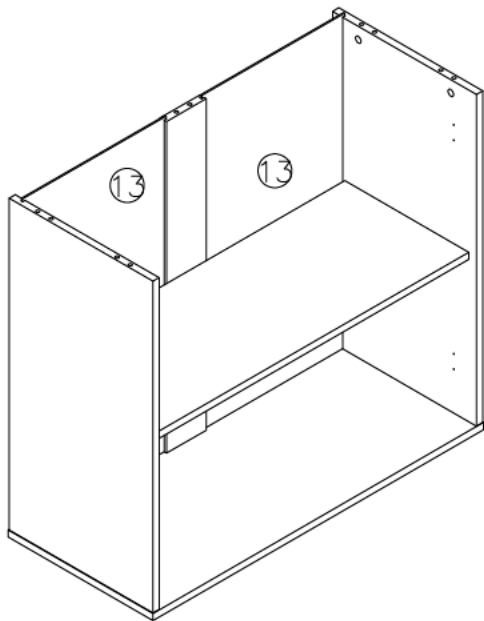
B  
2 pcs

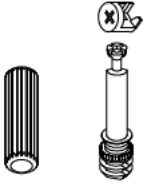
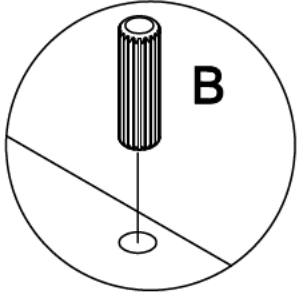
A  
2 pcs

9

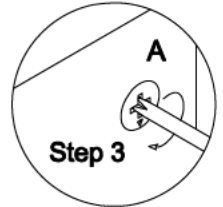
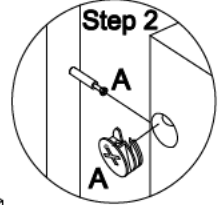
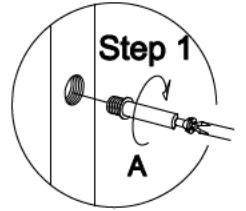


10





**B**      **A**  
4 pcs    6 pcs



### Step 1

**A**

### Step 2

### Step 3

**A**

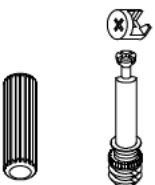
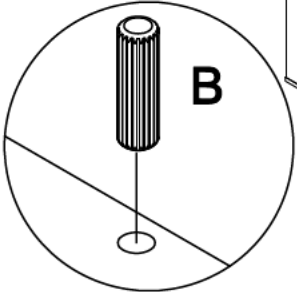


14

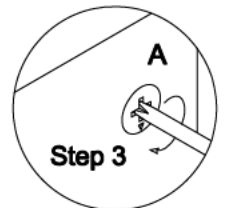
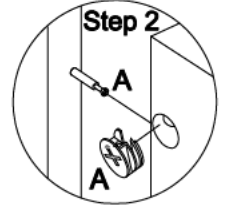
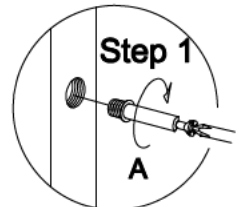
**A**

 $\parallel$ 

12



**B** 4 DCS  
**A** 6 ncs



### Step 1

**A**

### Step 2

**A**

### Step 3

**A**

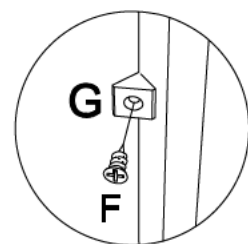
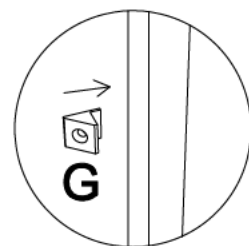
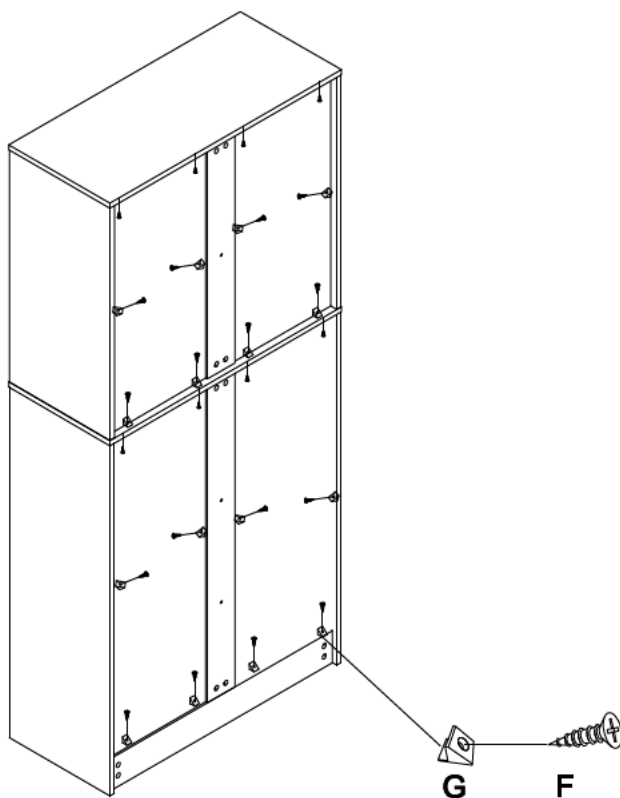
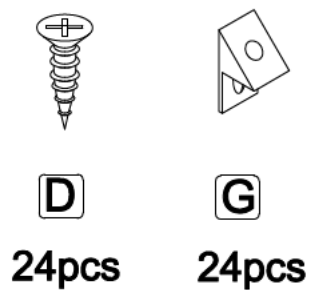
→

11

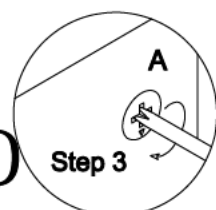
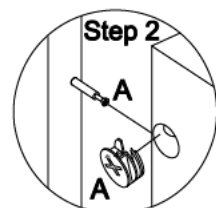
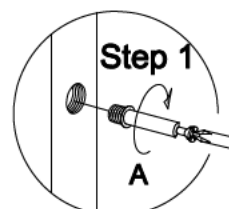
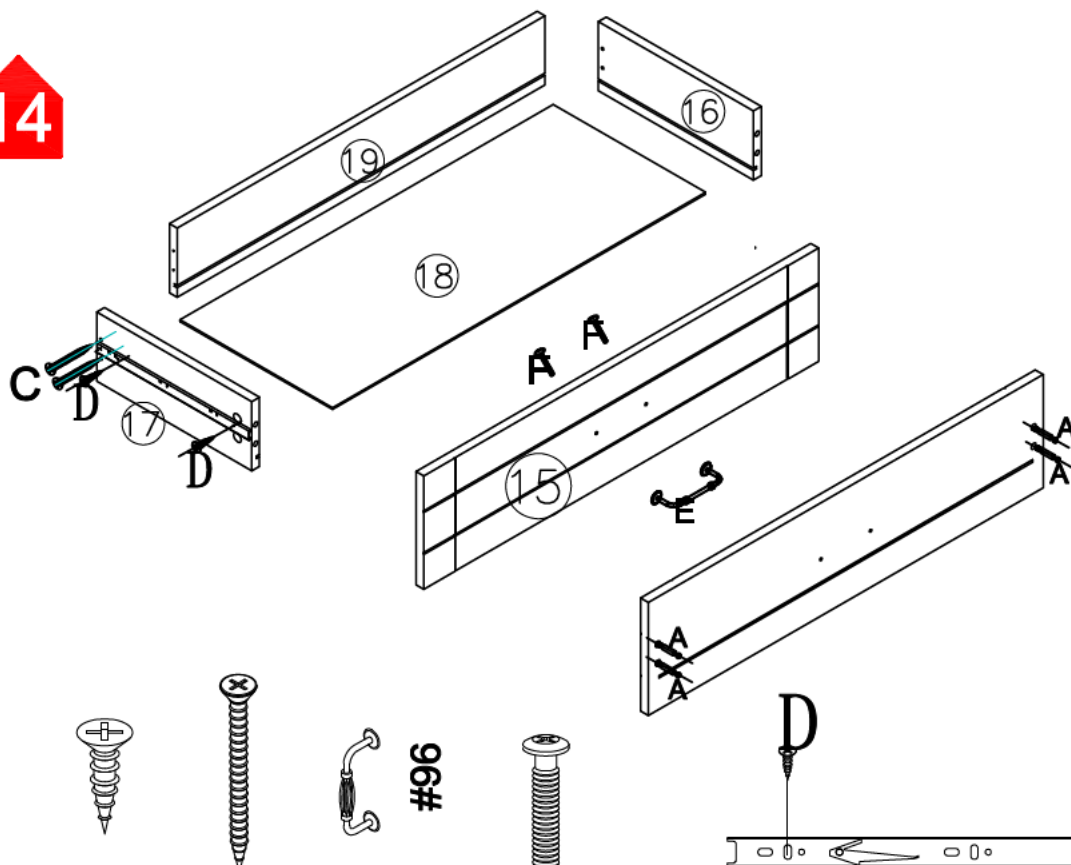
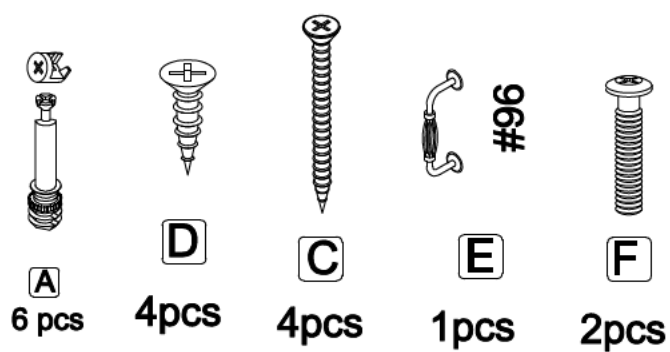
5

**P-12**

13

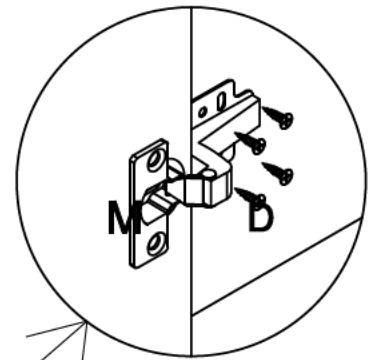
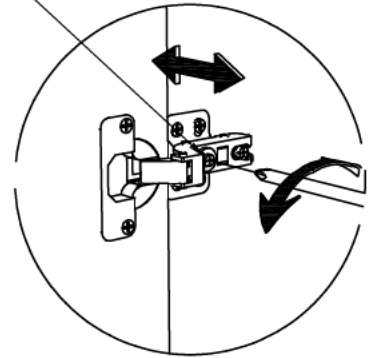
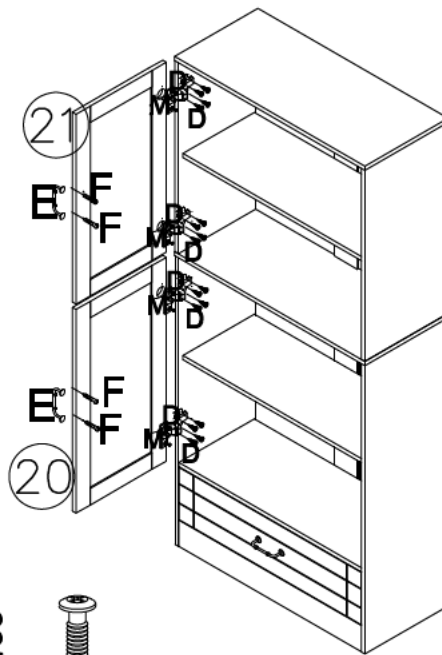


14

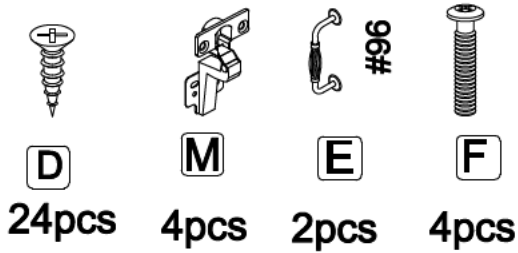


15

When adjusting the left and right sides of the door panel, this screw should not be loosened too much, otherwise it may easily damage the side panel or door panel

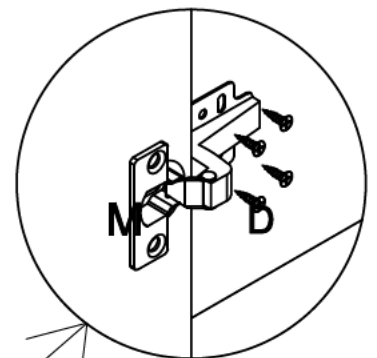
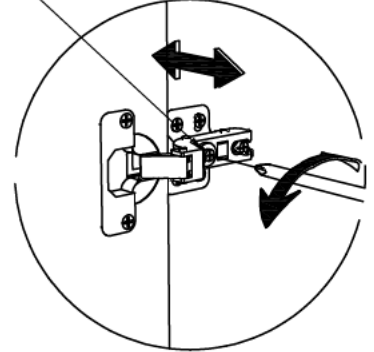
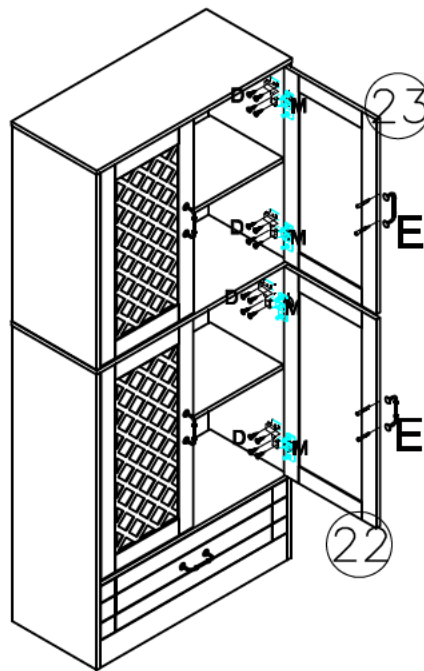


To prevent the door hinge from falling off, please install 4 screws

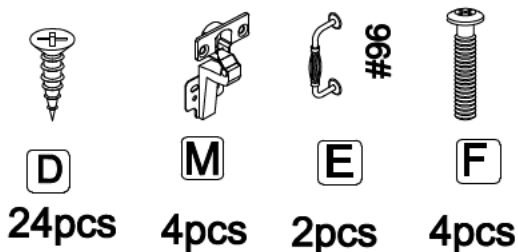


16

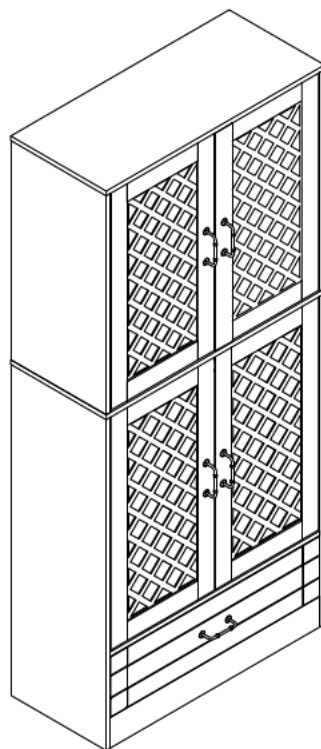
When adjusting the left and right sides of the door panel, this screw should not be loosened too much, otherwise it may easily damage the side panel or door panel



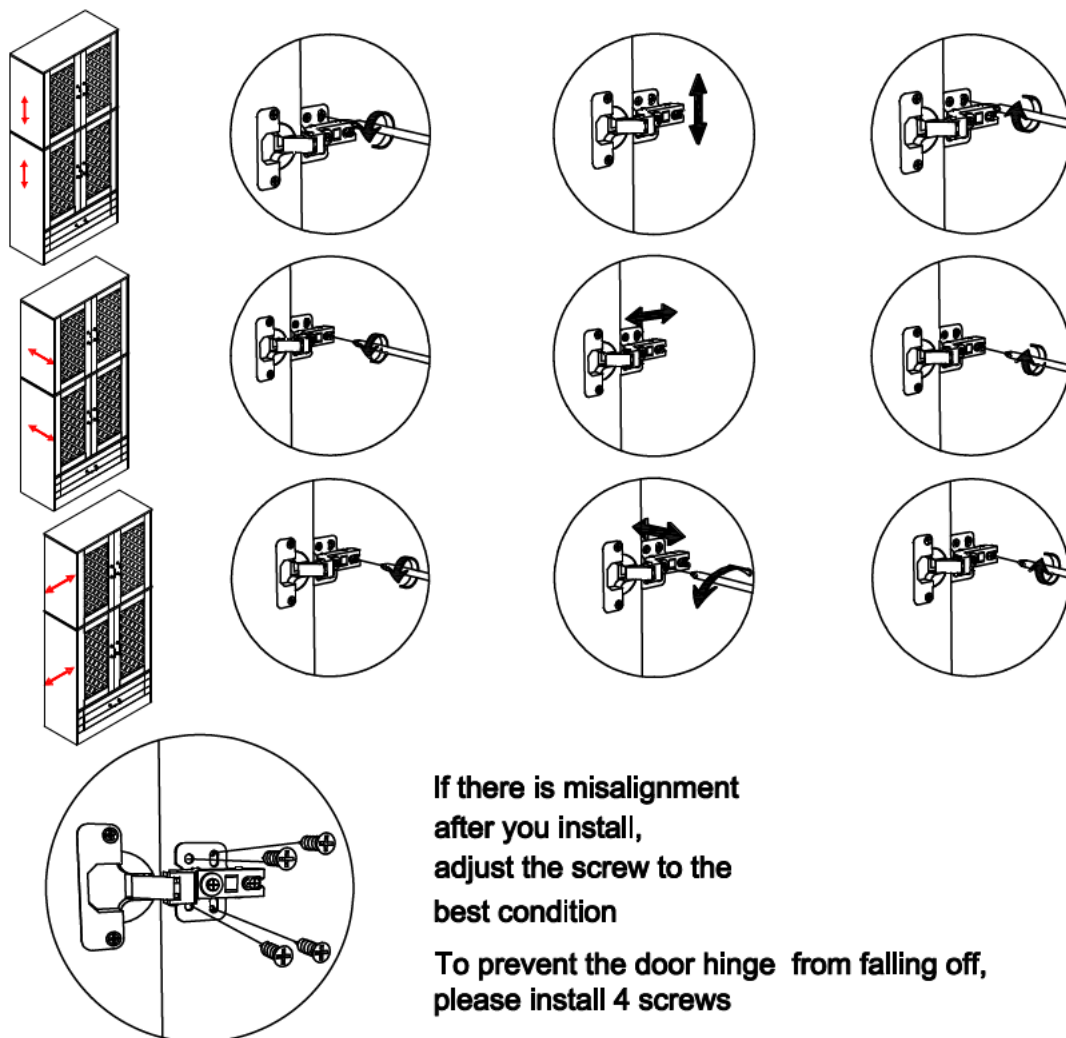
To prevent the door hinge from falling off, please install 4 screws



17

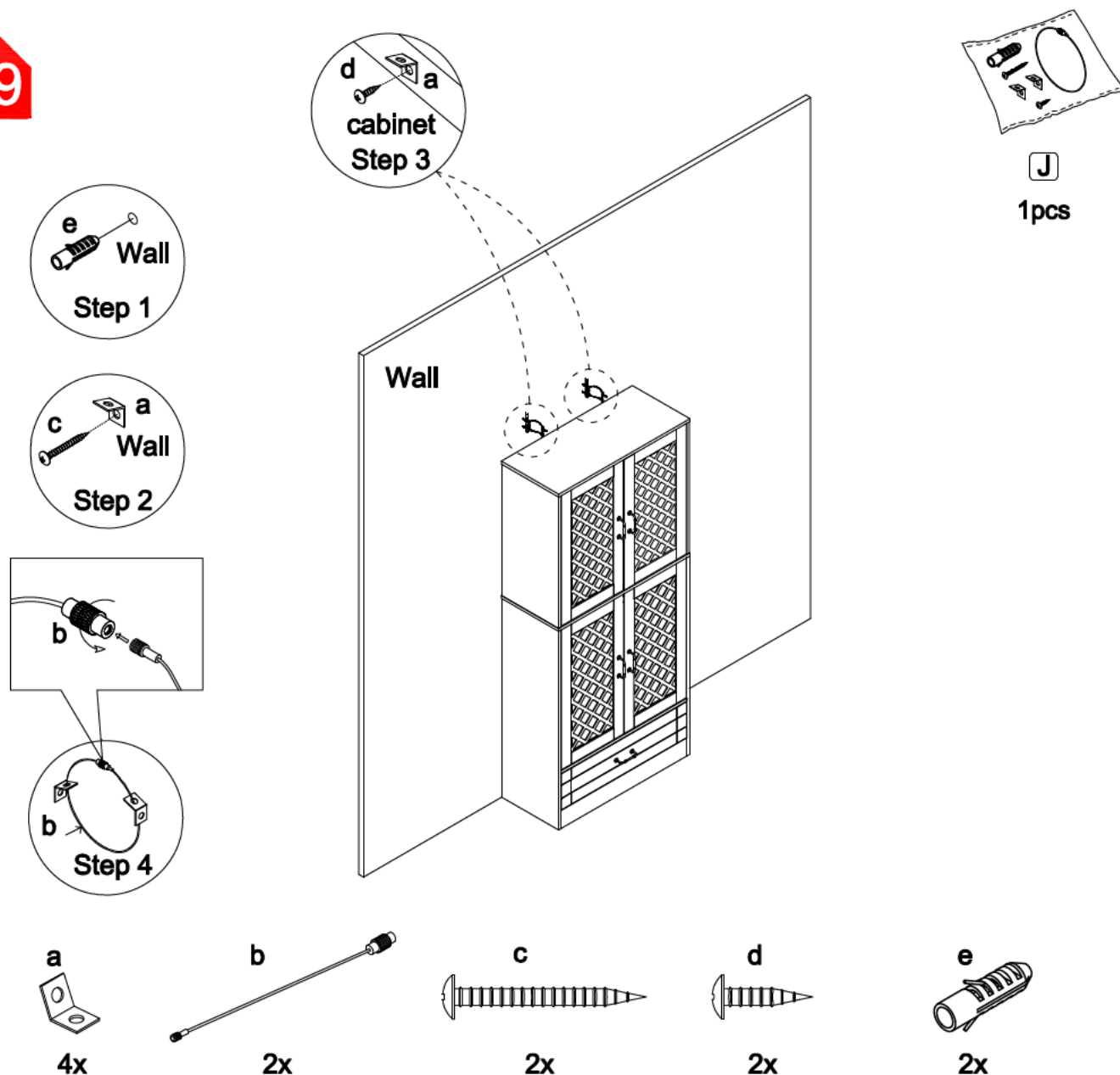


18





19



## Installation Steps:

1. Drill a hole on the wall, insert the expansion bolt (e) into the hole.
2. Secure one bracket (a) into the expansion bolt (e) using the screw (c).
3. Position the furniture in place. Attach another bracket (a) (aligns with the bracket on the wall) to the back edge of unit top using the screw (d),
4. Thread the male end of the steel cable (b) through both brackets. Securely join the ends by turning the female connector clockwise.

## Note:

Before installing the anti-tip kit, please determine where the furniture is to be placed and locate the center line of a wooden stud using a stud finder. For a concrete wall, ensure no steel bars inside it.

# Assembly Instructions

