

Features

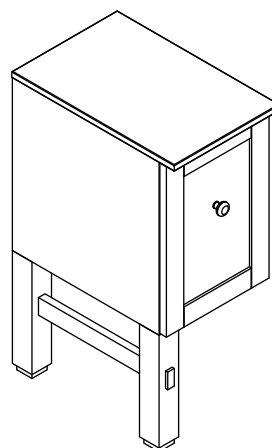
- Ash solids and veneers
- Slow-close drawer
- 12-1/8" (308 mm) x 18-11/16" (475 mm) x 29-3/4" (756 mm)

Codes/Standards Applicable

Specified model meets or exceeds the following:

- ANSI/KCMA A 161.1
- ATCM Sec. 93120-93120.12, Title 17, CA. Code of Regulations
- CARB P2

VANITY BRIDGE WITH MARBLE TOP K-2607



Colors/Finishes

- F69: Woodland

Accessories

- F69: Woodland

Specified Model

Model	Description	Colors/Finishes
K-2607	Vanity bridge with marble top	<input type="checkbox"/> F69
Recommended Accessories		
K-2604	Vanity – 23-3/4" (603 mm)	<input type="checkbox"/> F69
K-2684	Tall storage	<input type="checkbox"/> F69

Product Specification

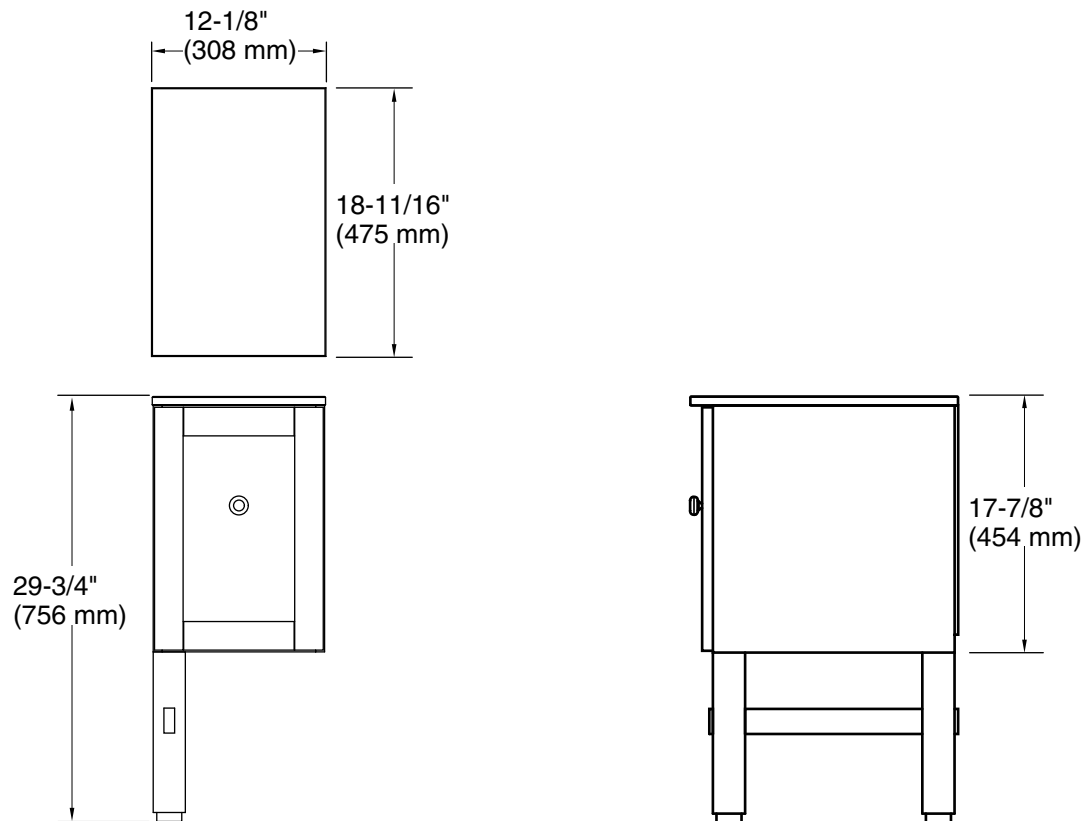
The vanity bridge shall be 12-1/8" (308 mm) in width, 18-11/16" (475 mm) in depth, and 29-3/4" (756 mm) in height. Vanity bridge shall be made of ash solids and veneers. Vanity bridge shall have slow-close drawer. Vanity bridge shall be Kohler Model K-2607-_____.

Installation Notes

Install this product according to the installation guide.

Decorative cabinet hardware is supplied. Refer to the Kohler bath accessories line for additional decorative cabinet hardware to complement your vanity bridge.

Select the type of fastener based on the wall material. A minimum 500 lb (227 kg) load bearing fastener is recommended.



Product Diagram