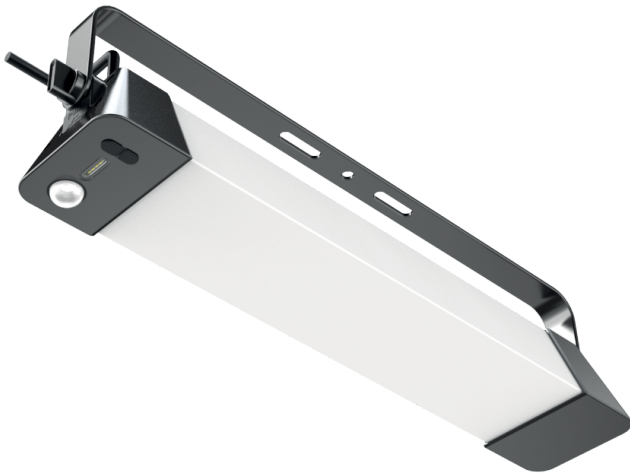


SOLAR WORKBENCH SHOP LIGHT

SPEC SHEET



Catalog No. : SQAD30-MS-5K-BK

Type : Workbench Shop Light

Project Name :

Location :

Qty :

Date :

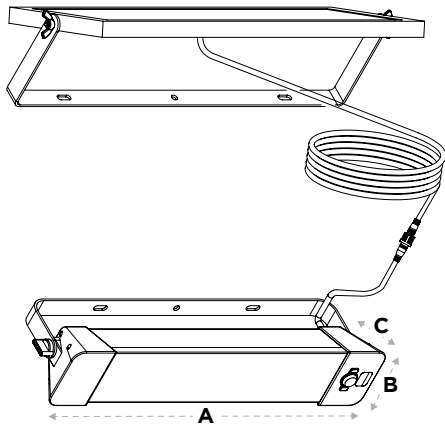
Product Features

PROBRITE's Solar Workbench Shop Light is an efficient solution for all your illumination needs, creating a brilliantly lit environment while minimizing the carbon footprint. The cutting-edge lighting design ensures that it can be easily specified, sold, installed, configured, and maintained. Its intelligent battery offers fast 8-hours charging time to 100% and a reliable Monocrystalline solar panel, ensures uninterrupted lighting throughout the night. The built-in PIR sensor with photocell enhances security when detects movement. Our solar light fixture features an integrated USB charger, making it capable of charging various devices, including cell phones, Bluetooth speakers, and other USB-compatible gadgets. No longer limited by the availability of electricity, enjoy reliable and efficient lighting solutions in areas where traditional power sources are not accessible. The full function 5 mode remote control grants you unprecedented control over your brightness and lighting hours. This durable all weather resistant light goes above and beyond with PROBRITE's limited 3-year warranty, ensuring years of dependable performance and trust.

Ordering guide

Prefix		Lumens		Motion Sensor		Color Temperature		Finish	
SQAD		30				5K		BK	
SQAD	Solar Workbench shop light	24	2400lm	MS	Motion sensor	3K	3000K	BK	Black
						4K	4000K	WH	White
						5K	5000K	BZ	Bronze

PRODUCT DIMENSIONS



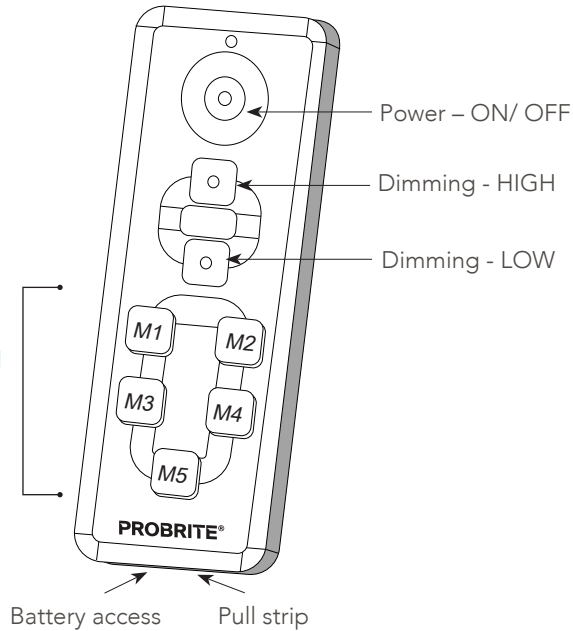
SQAD30-MS-5K-BK	
A	16.4 in
B	3.1 in
C	4.5 in

PRODUCT SPECIFICATION	
Product name	Solar Workbench Shop Light
Product Model	110-002000001-1/SQAD30-MS-5K-BK
Power	24W (MAX)
Lumen	2400LM±10%
Efficacy	100 LM/W
CCT/K	5000K
CRI	70
LED	2835*149 PCS
Operating Temp (Fixture)	-20°C (-4°F) - 40°C (104°F)
Housing Material	PC
Lens	Frosted
Sensor	PIR Sensor with Photocell
Light Fixture Size	16.4 x 3.1 x 4.5 in
Solar Panel Specifications	16.25 x 6.75 x 6.25 in
Battery Specification	6.4V/6AH 32700*2
Full Charging Time	8 Hours
Battery Material	Lithium iron Phosphate
Battery Operating Temp.	0°C (32°F)-40°C (104°F) (while charging) -20°C(-4°F) - 40°C (104°F) (while discharging)
Battery Lifetime	>1000 Cycles
Solar Panel Wattage	10V/1A 10W
Fixture And Solar Panel Lead Wire	15 ft
Discharge current	3.5A (MAX)
Dimmable	20% / 40% / 60% / 80% / 100%
Function	Remote control functions: ON/OFF, Automatic, 4H,6H,8H,10H, Dimming and other control modes
IP Rating	IP65
Installation Height	7-14 ft
Lifespan	25,000 Hours

REMOTE CONTROL OPERATION

MODES OF OPERATION

(Operate at maximum of 25ft from the fixture)

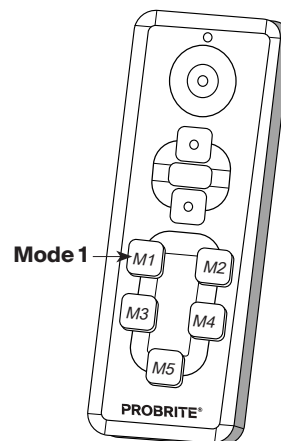


SELECT MODE WITH REMOTE CONTROL

OPTION 1: 4 HOURS MODE (M1)

4 HOURS MODE enables the light fixture to turn ON for 4 hours at 200 lumens ambient light. Upon motion detection, light emits 2000 lumens for security lighting.

- Once this mode is selected it will remain in the current mode until the fixture is manually turned off through the remote control.
- Dimming will be proportionate to the lumens (200) in the selected mode, until the fixture is manually turned off or a new mode has been selected.



OPERATION

OPERATION (CONTINUED)

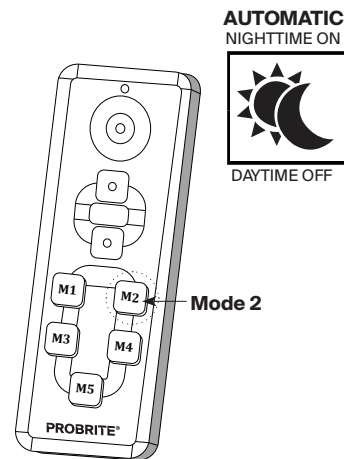
OPTION 2: ALL-NIGHT MODE (M2)

ALL-NIGHT MODE enables the light fixture to turn on for first 4 hours at 140 lumens, followed by 8 hours at 40 lumens for lighting through out the night. Upon motion detection, light emits 1300 lumens.

- Once this mode is selected, it will remain in the current mode until the fixture is manually turned off through the remote control.
- Dimming will be proportionate to the lumens (140, 40) in the selected mode, until the fixture is manually turned off or a new mode has been selected.



NOTE: The fixture will emit 4000 lumens for 20 seconds upon each motion detected, for up to 3 minutes. Each motion detection thereafter will be limited to 2000 lumens until the next charge.

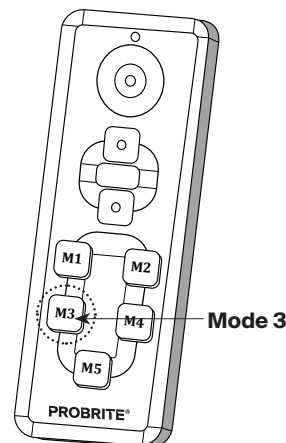


OPERATION (CONTINUED)

OPTION 3: 4 ENERGY-SAVING MODE (M3)

ENERGY-SAVING MODE enables the light fixture to turn on for first 4 hours at 120 lumens, followed by 10 hours at 40 lumens to conserve the battery. Upon motion detection, light emits 900 lumens.

- Once this mode is selected, it will remain in the current mode until the fixture is manually turned off through the remote control.
- Dimming will be proportionate to the lumens (120, 40) in the selected mode, until the fixture is manually turned off or a new mode has been selected.



OPERATION

OPERATION (CONTINUED)

OPTION 4: MOTION-ONLY MODE (M4)

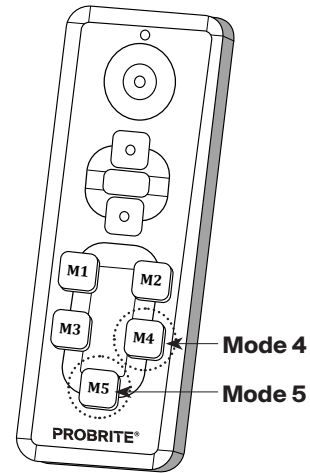
MOTION-ONLY MODE enables the light fixture to turn on ONLY when motion is detected. Upon motion detection, light emits 2400 lumens for maximum security lighting

- Once this mode is selected, it will remain in the current mode until the fixture is manually turned off through the remote control.
- Dimming is unavailable in this mode.

OPTION 5: OCCUPANCY MODE (M5)

OCCUPANCY MODE enables the light fixture to turn on ONLY when motion is detected:

- 1st trigger: 1400 lumens for 20 seconds
- 2nd trigger: 900 lumens for 30 minutes
- 3rd trigger: 460 lumens for 4 hours
- Once this mode is selected, it will remain in the current mode until the fixture is manually turned off through the remote control.
- Dimming is unavailable in this mode.



2. MANUAL OPERATION

ON-FIXTURE CONTROLS:

- Power - depress button on left of motion sensor for ON/OFF operation.
- Depress button on right of motion sensor for Mode. Continue pressing button until desired Mode is achieved.

